

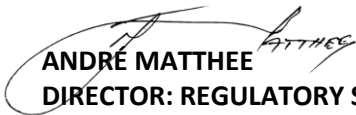


CALL FOR COMMENTS

LANSERIA (WARD) PROPOSED DEMARCATION

The Wine and Spirit Board will be publishing the proposed demarcation of LANSERIA, as a new ward, in the *Government Gazette* and various newspapers for objections. Please see the attached application notice.

If you have any **comments or objections** in this regard, please submit same in writing to the board's executive manager, Olivia Poonah, at olivia@wsb.org.za, to reach her before 2 May 2022. If you have any queries please feel free to contact Olivia at +27 (0)21 889 6555.



ANDRÉ MATTHEE

DIRECTOR: REGULATORY SERVICES

WINE AND SPIRIT BOARD

Tel: +27 83 444 6963 **Email:** matthee@wo.org.za

Disclaimer: This document has been prepared primarily for the general information of the South African wine industry and does not represent any form of legal advice. Accordingly, readers should not rely on the comments contained herein, whether express or implied, and should consult the legislation concerned and obtain specific advice on these matters from their own legal advisers. Writer or his employer does not accept responsibility for the accuracy or completeness of any recommendations, comments, information, or advice contained herein, and will not be held liable for any loss or damage that may arise as a result of the use of the information.

WINE LAW is a publication of:

THE WINE AND SPIRIT BOARD

WINE OF ORIGIN (WO) · INTEGRATED PRODUCTION OF WINE (IPW) · ESTATE BRANDY

NOTICE OF APPLICATION FOR THE DEFINING OF A PRODUCTION AREA LANSERIA (WARD)

(In terms of Section 6 of the Wine of Origin Scheme published by Government Notice No. R.1434 of 29 June 1990)

Please take note that Delalmar Winery & Distillery (Pty) Ltd applied to the Wine and Spirit Board to define Lanseria (Ward) as a production area to produce Wine of Origin.

The proposed Lanseria ward is situated about 30 km north-northwest of central Johannesburg, within the Crocodile River catchment area that feeds the Hartebeespoort dam, with the confluence of the Jukskei and the Crocodile Rivers on the northern boundary.

The altitude map (Fig1) shows the drainage patterns of the Crocodile and Jukskei Rivers and that the vineyards concerned are 1 325 m above sea level, which rates it among the highest wine grape sites in South Africa.

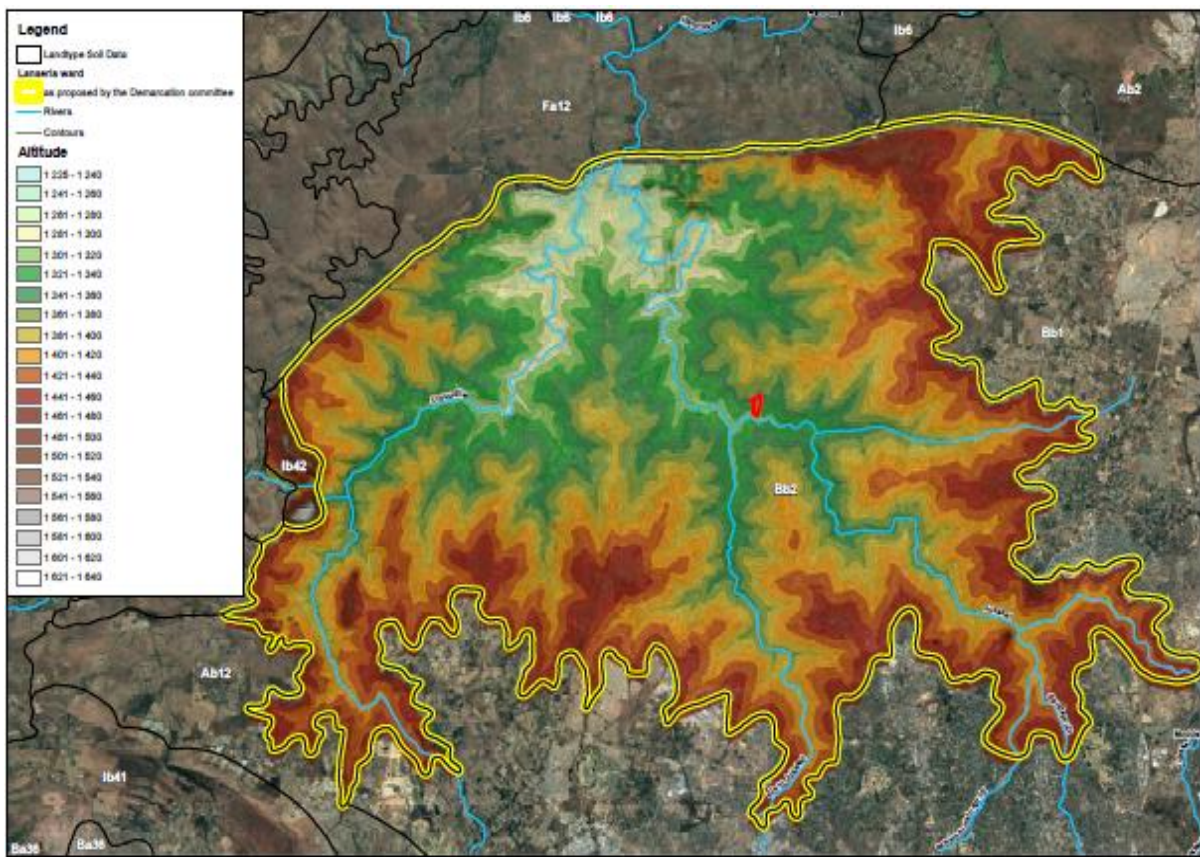


Fig. 1: Altitude map of the proposed Lanseria ward

The Land Type soil survey soil unit Bb2, conducted by ARC-ISCW (Land Type Survey Staff, 2002), was used to demarcate the Lanseria ward, since it describes a specific soil and terrain pattern that differs from surrounding units.

Land type Bb2 Geology : Granite and migmatite of the Halfway House Intrusion.

Land type Bb2 Soils: Plinthic catena (> 10%); upland duplex and marginalitic soils rare (< 10%); Moderately to highly leached, red soils < 33%.

Fig. 2 shows the Lanseria ward boundary in yellow.

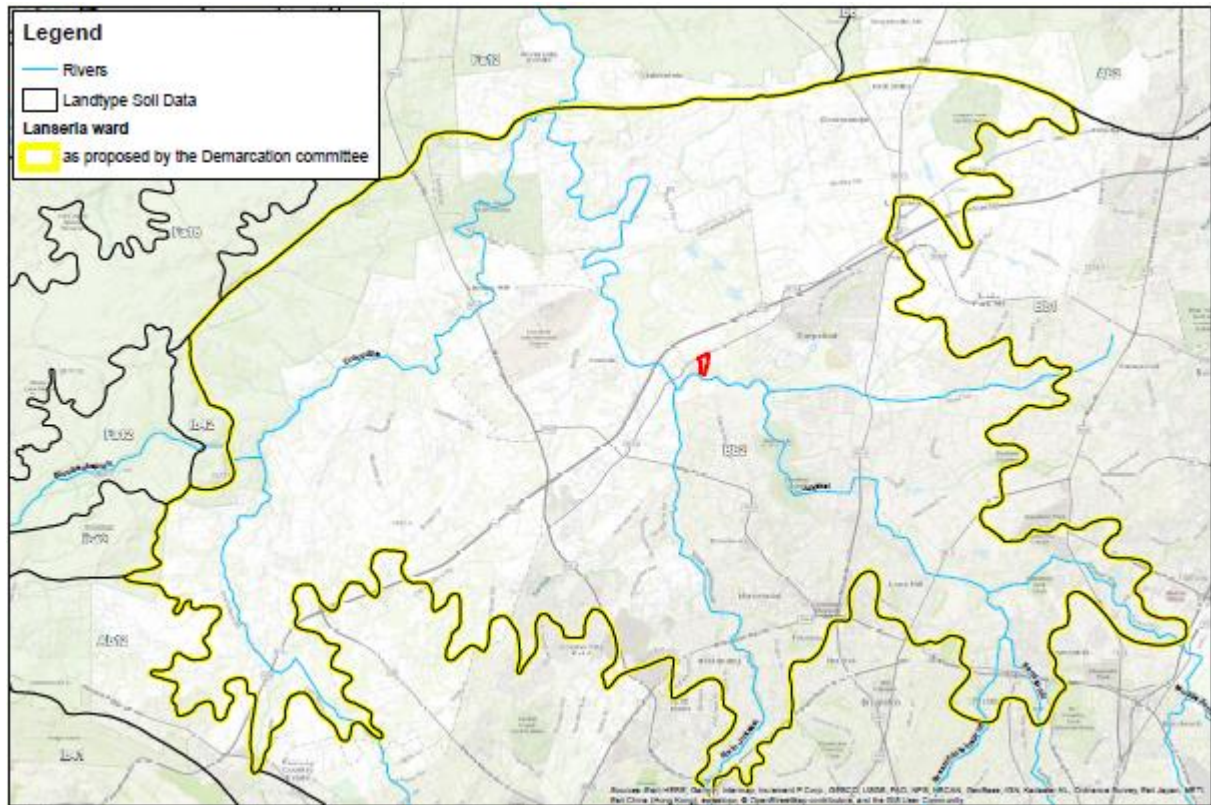


Fig. 2: Topocadastral map of the Lanseria ward in yellow (Landtype soil unit Bb2)

The proposed boundaries can be viewed at www.sawis.co.za – "Certification – News and Information" or contact Jackie Cupido at 021-807 5704.

Anyone having any objection against this application is hereby notified to lodge their objections, with motivations, in writing with Olivia Poonah (olivia@wsb.org.za), Executive Manager, Wine and Spirit Board, P O Box 2176, Dennesig, Stellenbosch, 7599 within 30 (thirty) days of publication of this notice.