



INFORMATION & CALL FOR COMMENTS

1. PORSELEINBERG PROPOSED DEMARCATION

The Wine and Spirit Board has published the proposed demarcation of PORSELEINBERG, as a new ward, in the *Government Gazette* and various newspapers for objections. Please see the attached application notice and two maps of the proposed new ward.

If you have any **comments or objections** in this regard please submit same in writing to the board's secretary, Olivia Poonah, at olivia@wsb.org.za, to reach her before 31 August 2020. If you have any queries please feel free to contact Olivia at +27 (0)21 889 6555.

2. SUBMISSION OF LABELS

Kindly note that labels are evaluated on a weekly basis by the Label Committee. All labels received before the cut-off time will be submitted to the Committee.

Please submit your labels by no later than 14h00 on a Tuesday. Labels received after 14h00 on a Tuesday, will be submitted at the following week's meeting.

Feedback regarding your submission(s) will be communicated to you on Thursday or Friday.

All BG11 submissions must be accompanied by the official label approved document (example of a blank approval letter attached) and a copy of the approved label(s).

ANDRÉ MATTHEE

DIRECTOR: REGULATORY SERVICES

WINE AND SPIRIT BOARD

Tel: +27 83 444 6963 **Email:** matthee@wo.org.za

Disclaimer: This document has been prepared primarily for the general information of the South African wine industry and does not represent any form of legal advice. Accordingly, readers should not rely on the comments contained herein, whether express or implied, and should consult the legislation concerned and obtain specific advice on these matters from their own legal advisers. Writer or his employer does not accept responsibility for the accuracy or completeness of any recommendations, comments, information or advice contained herein, and will not be held liable for any loss or damage that may arise as a result of the use of the information.

WINE LAW is a publication of:

THE WINE AND SPIRIT BOARD

WINE OF ORIGIN (WO) · INTEGRATED PRODUCTION OF WINE (IPW) · ESTATE BRANDY

**NOTICE OF APPLICATION FOR THE DEFINING OF A PRODUCTION AREA
PORSELEINBERG (WARD)**

(In terms of Section 6 of the Wine of Origin Scheme published by Government Notice No. R.1434 of 29 June 1990)

Please take note that Boekenhoutskloof Winery (Pty) Ltd applied to the Wine and Spirit Board to define Porseleinberg (Ward) as a production area to produce Wine of Origin.

The proposed Porseleinberg Ward is demarcated as a geographically mountainous landscape unit, which distinguishes it from the surrounding hill landscape to its west (figure 1), and it is further bordered by the Doring and Berg Rivers on the southern and eastern sides, with the existing Riebeeksrivier and Riebeekberg Wards on the northern side. It is characterised by western, southern and eastern aspects, with Malmesbury shale, schists and phyllites as underlying geological formations (figure 2).

Boundary definition: The proposed Porseleinberg Ward's northern boundary is the common southern boundaries of the existing Riebeeksrivier and Riebeekberg Wards. The western boundary of the ward follows the 250 m contour line in a southerly direction, from where this contour crosses the southern boundary of the Riebeeks River, to where it crosses the riverbed of the Doring River. From there downstream and generally south-eastwards and then eastwards along the course of the Doring River, to where it flows into the Berg River. From there the boundary continues downstream and generally northwards along the course of the Berg River to right against the southwestern boundary of farm 987 where the boundary climbs out of the Berg River and moves westwards along the aforementioned farm boundary to beside the Haaskraal Road. From there it goes in a north-easterly direction along said road to where the road ends right against the R46. From there north-westwards along the R46 to where it crosses the southern boundary of the existing Riebeekberg Ward.

The proposed boundaries can be viewed at www.sawis.co.za – "Certification – News and Information" or contact Jackie Cupido at 021-807 5704.

Anyone having any objection against this application is hereby notified to lodge their objections, with motivations, in writing with Olivia Poonah (olivia@wsb.org.za), The Secretary, Wine and Spirit Board, P O Box 2176, Dennesig, Stellenbosch, 7599 within 30 (thirty) days of publication of this notice.

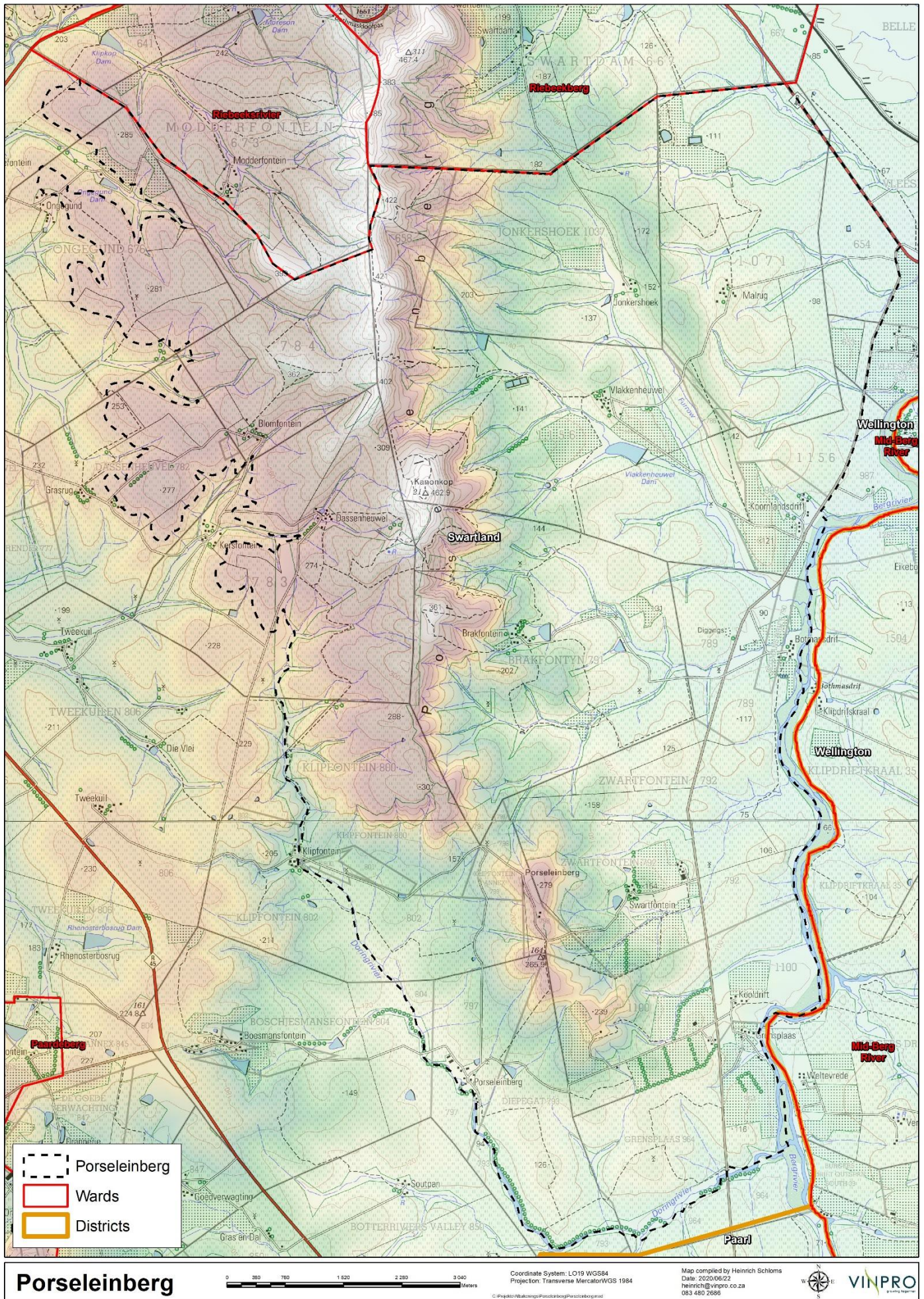


Figure 1: 1:50000 Topocadastral map of Porseleinberg.

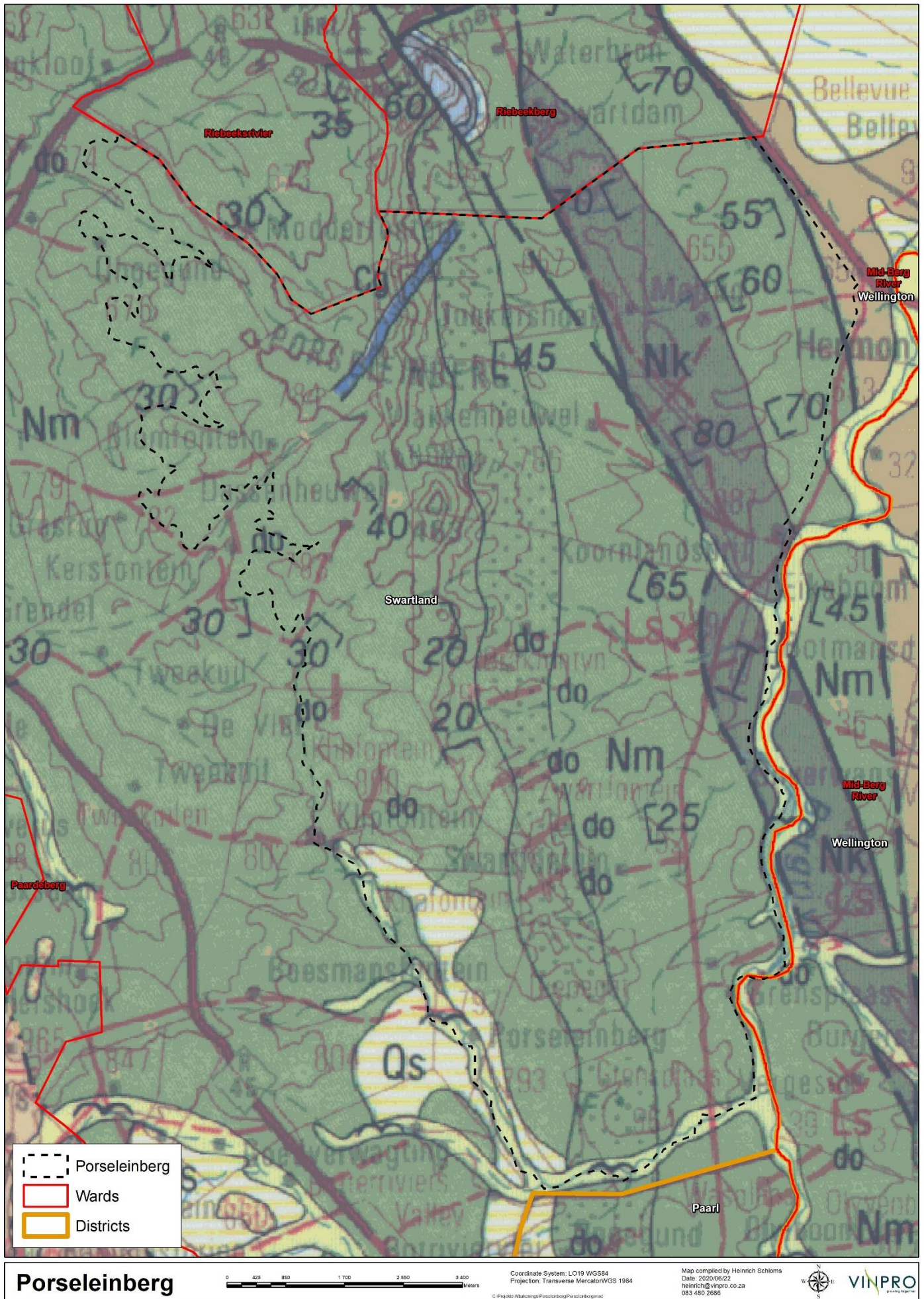


Figure 2: 1:50000 Geological map of Porseleinberg.

