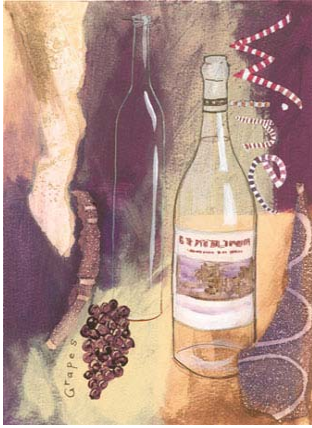


Wine Industry

I N F O R M A T I O N

April 2007



In this issue

- DOMESTIC SALES p2
- PRICE RANGES p3
- EXPORTS p7
- VINPRO 2006 PRODUCTION PLAN p11
- CERTIFICATION p12

2006 VINE STATUS AND 2004, 2005 AND 2006 PRODUCER CELLAR GRAPE PRICES

Included with this month's publication the "Statistics of Wine-grape vines as on 30 November 2006" as well as the "2004, 2005 and 2006 Producer cellar Grape prices".

The latest information with regard to the status of vines shows that the plantings of wine grape varieties decreased by 29% in 2006 compared to 2005. Plantings of red varieties represented 17% of total plantings compared to respectively 26% and 40% in 2005 and 2004. Total uprootings in 2006 was made up of 62% white and 38% red varieties compared with 63% white and 37% red in 2005. Respectively 38.9% and 74.8% of white and red varieties is ten years old or younger.

The 2004 producer cellar grape prices are final and the 2005 and 2006 producer cellar grape prices are estimated. With regards to 2004, 2005 and 2006 respectively 57, 57 and 58 producer cellars participated.

Regarding this month's exports: Please note that the month-on-month trend is not a true reflection of the actual trend. This is due to an error in the export system that was rectified, but not necessarily in the actual month of export. This is applicable to both March and April 2006 figures.

Also in this issue – domestic sales of natural wine during February 2007 (page 2), information regarding the price ranges in which wine were sold in bulk during February 2007 (pages 3 to 6), exports of wine and flavoured grape liquor during March 2007 (page 7), exports by country (page 8), exports of spirits during March 2007 (page 9), exports in containers for the period January to March 2007 (page 10), VinPro 2006 production plan (page 11) and volume of wine certified during March 2007 (page 12).

SAWIS greetings until May
Natalie

A PUBLICATION OF:



FOR FURTHER ENQUIRIES CONTACT :

Natalie Davids
Tel: (021) 807 5719
Fax: (021) 807 6004

PO Box 238 Paarl, 7620
E-mail: natalie@sawis.co.za
Web page: www.sawis.co.za



SA WINE COUNCIL

DOMESTIC SALES AND EXPORTS OF NATURAL WINE

DOMESTIC SALES OF NATURAL WINE GROSS LITRE

	1 MONTH		3 MONTHS				6 MONTHS				12 MONTHS				MARKET SHARE	
	FEB 2006	FEB 2007	DEC 2005 FEB 2006	DEC 2006 FEB 2007	TREND	SEP 2005 FEB 2006	SEP 2006 FEB 2007	TREND	MAR 2005 FEB 2006	MAR 2006 FEB 2007	TREND	MAR 2006 FEB 2007	TREND	MAR 2006 FEB 2007		
Wholesalers	14 459 434	15 241 897	43 291 090	44 240 519	102.19	85 321 982	88 179 649	103.35	164 584 661	164 718 634	100.08	54.39				
Cellars	2 803 245	2 777 085	8 359 532	8 433 878	100.89	16 636 590	17 885 667	107.51	31 703 107	33 034 613	104.20	10.91				
Producer Cellars	7 334 148	7 951 717	24 211 568	24 273 942	100.26	49 435 100	51 091 672	103.35	99 871 185	99 519 672	99.65	32.86				
SUB TOTAL	24 596 827	25 970 699	75 862 190	76 948 339	101.43	151 393 672	157 156 988	103.81	296 158 953	297 272 919	100.38	98.15				
Wine component of alc fruit bev	463 790	460 275	1 829 127	1 453 083	79.44	3 746 377	2 742 666	73.21	7 156 428	5 599 756	78.25	1.85				
TOTAL	25 060 617	26 430 974	77 691 317	78 401 422	100.91	155 140 049	159 899 654	103.07	303 315 381	302 872 675	99.85	100.00				

Included in these figures are the sales of locally bottled imported natural wine

EXPORT OF NATURAL WINE GROSS LITRE

	1 MONTH		3 MONTHS				6 MONTHS				12 MONTHS				MARKET SHARE	
	FEB 2006	FEB 2007	DEC 2005 FEB 2006	DEC 2006 FEB 2007	TREND	SEP 2005 FEB 2006	SEP 2006 FEB 2007	TREND	MAR 2005 FEB 2006	MAR 2006 FEB 2007	TREND	MAR 2006 FEB 2007	TREND	MAR 2006 FEB 2007		
TOTAL	16 535 122	21 123 319	51 579 784	64 278 351	124.62	124 571 721	130 286 219	104.59	280 905 931	276 820 064	98.55	100.00				

DOMESTIC SALES AND EXPORT OF NATURAL WINE GROSS LITRE

	1 MONTH		3 MONTHS				6 MONTHS				12 MONTHS				MARKET SHARE	
	FEB 2006	FEB 2007	DEC 2005 FEB 2006	DEC 2006 FEB 2007	TREND	SEP 2005 FEB 2006	SEP 2006 FEB 2007	TREND	MAR 2005 FEB 2006	MAR 2006 FEB 2007	TREND	MAR 2006 FEB 2007	TREND	MAR 2006 FEB 2007		
TOTAL	41 595 739	47 554 293	129 271 101	142 679 773	110.37	279 711 770	290 185 873	103.74	584 221 312	579 692 739	99.22	100.00				

SOURCE FOR EXPORT FIGURES: DEPARTMENT OF AGRICULTURE, DIRECTORATE FOOD SAFETY AND QUALITY ASSURANCE

PRICE RANGES IN WHICH WINE WERE SOLD IN BULK

TYPE	PRICE RANGE R / HL OR C / £	FEBRUARY 2006		FEBRUARY 2007		JAN - FEB 2007		JAN 06- DEC 06	JAN 05- DEC 05
		LITRES	%	LITRES	%	LITRES	%	%	%
Cabernet Sauvignon	< 100			2 750	0.1	2 750	0.1		
	100 - < 200			7 450	0.3	19 000	0.5	0.3	0.0
	200 - < 300	106 700	8.4	233 220	9.6	367 578	9.4	2.8	3.6
	300 - < 400	341 455	26.8	766 577	31.5	1 651 204	42.4	43.5	18.2
	400 - < 500	238 850	18.7	237 564	9.8	450 414	11.6	10.4	15.0
	500 - < 600	143 195	11.2	1 016 705	41.8	1 038 465	26.6	13.4	24.6
	600 - < 700	355 025	27.8	80 680	3.3	167 120	4.3	17.7	13.0
	700 - < 800	89 760	7.0	89 600	3.7	180 870	4.6	6.0	13.0
	800 - < 900					20 900	0.5	3.1	6.4
	900 - < 1000							0.8	3.5
	> 1000							2.0	2.7
TOTAL £		1 274 985	100.0	2 434 546	100.0	3 898 301	100.0	100.0	100.0
AVE PRICE R / HL OR C / £			481.59		453.65		428.08	476.23	557.12
Cabernet Franc	100 - < 200							1.20	
	200 - < 300	4 060	5.8			27 950	21.4	6.1	15.0
	300 - < 400	62 465	89.2			102 624	78.6	39.9	52.9
	400 - < 500	3 480	5.0					31.9	11.9
	500 - < 600							7.5	
	600 - < 700							5.3	15.1
	700 - < 800							8.1	5.1
TOTAL £		70 005	100.0			130 574	100.0	100.0	100.0
AVE PRICE R / HL OR C / £			333.12				301.09	408.12	384.92
Ruby Cabernet	100 - < 200			47 680	7.7	47 680	5.6		
	200 - < 300	153 620	19.8	163 920	26.4	230 120	27.1	24.9	21.3
	300 - < 400	142 340	18.3	280 694	45.3	392 614	46.3	24.6	26.8
	400 - < 500	172 780	22.3	127 724	20.6	177 934	21.0	23.8	17.3
	500 - < 600	289 600	37.3					24.6	27.4
	600 - < 700	18 050	2.3					1.2	6.9
	700 - < 800								0.0
	800 - < 900								
	900 - < 1000							0.8	
	> 1000								0.2
TOTAL £		776 390	100.0	620 018	100.0	848 348	100.0	100.0	100.0
AVE PRICE R / HL OR C / £			411.49		305.75		307.30	393.36	411.45
Merlot	< 100					16 000	0.8		
	100 - < 200					1 000	0.1	4.08	
	200 - < 300	176 680	16.5	25 120	6.5	83 970	4.3	6.3	6.2
	300 - < 400	417 418	38.9	129 196	33.6	567 740	29.2	45.6	39.2
	400 - < 500	98 500	9.2	27 590	7.2	524 182	27.0	13.0	16.9
	500 - < 600	41 045	3.8	180 068	46.9	653 836	33.7	13.6	15.3
	600 - < 700	255 010	23.8	12 000	3.1	84 500	4.4	9.4	5.2
	700 - < 800			10 000	2.6	10 000	0.5	4.1	11.3
	800 - < 900	2 250	0.2					1.9	2.5
	900 - < 1000	82 449	7.7					2.0	2.8
	> 1000							0.0	0.7
TOTAL £		1 073 352	100.0	383 974	100.0	1 941 228	100.0	100.0	100.0
AVE PRICE R / HL OR C / £			467.62		470.85		445.56	426.29	471.33
Shiraz	< 100							0.08	
	100 - < 200							0.27	
	200 - < 300	65 680	5.8	213 700	13.4	271 100	6.8	5.6	2.4
	300 - < 400	282 138	25.0	650 676	40.8	1 124 716	28.4	30.0	28.0
	400 - < 500	130 970	11.6	237 768	14.9	1 006 673	25.4	18.1	21.3
	500 - < 600	334 555	29.6	316 800	19.9	1 040 639	26.3	15.5	12.0
	600 - < 700	135 675	12.0	71 120	4.5	182 010	4.6	13.0	9.9
	700 - < 800	118 900	10.5			8 020	0.2	6.3	11.3
	800 - < 900	46 146	4.1	104 282	6.5	318 973	8.0	7.5	10.0
	900 - < 1000							1.4	2.0
	> 1000	14 490	1.3			10 749	0.3	2.2	3.3
TOTAL £		1 128 554	100.0	1 594 346	100.0	3 962 880	100.0	100.0	100.0
AVE PRICE R / HL OR C / £			535.55		425.75		467.73	514.37	548.21

TYPE	PRICE RANGE R / HL OR C / ℓ	FEBRUARY 2006		FEBRUARY 2007		JAN - FEB 2007		JAN 06-DEC 06	JAN 05-DEC 05
		LITRES	%	LITRES	%	LITRES	%	%	%
Pinotage	100 - < 200							0.2	
	200 - < 300							2.3	1.0
	300 - < 400	360 232	17.9	669 949	63.0	1 731 980	49.3	49.8	48.0
	400 - < 500	1 070 034	53.2	326 428	30.7	1 269 392	36.2	35.7	24.8
	500 - < 600	539 873	26.8	53 200	5.0	490 118	14.0	7.5	11.3
	600 - < 700	41 740	2.1	13 800	1.3	18 100	0.5	3.4	9.5
	700 - < 800							0.5	1.6
	800 - < 900								2.0
	900 - < 1000								0.6
	> 1000							0.6	1.1
	TOTAL ℓ	2 011 879	100.0	1 063 377	100.0	3 509 590	100.0	100.0	100.0
	AVE PRICE R / HL OR C / ℓ		438.97		391.93		399.81	392.88	443.73
Pinot Noir	300 - < 400							60.7	
	400 - < 500							26.1	8.4
	500 - < 600								14.6
	600 - < 700							13.2	40.8
	700 - < 800								29.3
	800 - < 900								
	900 - < 1000								
> 1000								6.9	
	TOTAL ℓ							100.0	100.0
	AVE PRICE R / HL OR C / ℓ							420.45	652.16
Cinsaut	100 - < 200							1.34	
	200 - < 300	500 090	53.3	19 390	48.4	31 810	22.7	22.1	0.6
	300 - < 400	438 153	46.7	20 660	51.6	20 660	14.7	46.3	54.5
	400 - < 500					87 821	62.6	25.8	31.8
	500 - < 600							4.5	12.7
	600 - < 700								0.4
		TOTAL ℓ	938 243	100.0	40 050	100.0	140 291	100.0	100.0
	AVE PRICE R / HL OR C / ℓ		285.95		296.52		359.84	349.50	396.57
Rosé	100 - < 200			22 080	3.9	55 900	6.4	0.1	
	200 - < 300	196 071	24.7	153 602	27.4	177 242	20.4	34.9	40.3
	300 - < 400	483 450	60.8	378 190	67.4	624 542	72.0	57.0	43.7
	400 - < 500	25 150	3.2	7 640	1.4	10 180	1.2	6.9	15.7
	500 - < 600	90 660	11.4					1.1	0.3
		TOTAL ℓ	795 331	100.0	561 512	100.0	867 864	100.0	100.0
	AVE PRICE R / HL OR C / ℓ		332.65		330.62		326.40	317.58	321.42
Other red and blends	< 200			29 230	1.2	30 230	0.7	2.2	0.1
	200 - < 300	206 201	13.1	224 741	9.5	702 146	15.7	16.6	17.8
	300 - < 400	1 125 199	71.4	1 509 197	63.7	2 522 862	56.3	48.9	35.1
	400 - < 500	120 074	7.6	148 888	6.3	405 342	9.0	16.6	28.3
	500 - < 700	60 322	3.8	372 035	15.7	715 130	16.0	13.7	8.5
	> 700	64 740	4.1	84 694	3.6	104 424	2.3	2.0	10.3
		TOTAL ℓ	1 576 536	100.0	2 368 785	100.0	4 480 134	100.0	100.0
	AVE PRICE R / HL OR C / ℓ		366.20		405.48		389.53	386.66	417.72
Chardonnay *	< 250								0.4
	250 - < 350	101 700	7.7	246 800	10.9	327 849	9.9	1.1	1.9
	350 - < 450	92 565	7.0	885 190	39.0	1 155 291	34.8	17.2	9.4
	450 - < 550	1 014 573	76.7	1 061 130	46.7	1 711 907	51.6	67.9	71.1
	550 - < 650	114 730	8.7			47 381	1.4	13.0	15.9
	> 650			77 947	3.4	77 947	2.3	0.8	1.3
		TOTAL ℓ	1 323 568	100.0	2 271 067	100.0	3 320 375	100.0	100.0
	AVE PRICE R / HL OR C / ℓ		478.31		435.49		447.55	495.11	494.22
Chardonnay Juice	AVE PRICE R / HL OR C / ℓ	327 949	486.82	920 294	444.28	1 008 583	452.18	473.76	482.88
Sauvignon Blanc *	< 250							0.4	0.5
	250 - < 350	40 237	7.0			23 380	0.5	3.0	2.5
	350 - < 450	51 360	9.0			73 740	1.5	4.8	8.9
	450 - < 550	318 760	55.7	2 418 016	91.1	4 492 650	90.5	46.3	55.6
	550 - < 650	126 784	22.2	194 903	7.3	330 461	6.7	37.4	29.1
	> 650	34 703	6.1	40 768	1.5	46 089	0.9	8.1	3.4
		TOTAL ℓ	571 844	100.0	2 653 687	100.0	4 966 320	100.0	100.0
	AVE PRICE R / HL OR C / ℓ		518.30		513.16		507.96	547.53	522.11
Sauvignon Blanc Juice	AVE PRICE R / HL OR C / ℓ			1 897 223	501.77	3 770 167	500.98	500.00	500.00

TYPE	PRICE RANGE R / HL OR C / ℓ	FEBRUARY 2006		FEBRUARY 2007		JAN - FEB 2007		JAN 06-DEC 06	JAN 05-DEC 05
		LITRES	%	LITRES	%	LITRES	%	%	%
Chenin Blanc *	150 - < 200	2 200	0.1					0.0	0.2
	200 - < 250	44 339	1.6	205 795	3.6	346 855	3.8	1.2	15.6
	250 - < 350	2 456 653	85.9	4 502 423	77.7	7 000 968	76.8	76.8	63.4
	> 350	356 778	12.5	1 084 858	18.7	1 763 511	19.4	22.0	20.8
	TOTAL ℓ	2 859 970	100.0	5 793 076	100.0	9 111 334	100.0	100.0	100.0
	AVE PRICE R / HL OR C / ℓ	304.77		322.04		319.14		317.27	304.43
Chenin Blanc Juice	AVE PRICE R / HL OR C / ℓ			96 903	498.40	156 765	430.28	0.00	300.00
Colombar	150 - < 200								0.3
	200 - < 250	167 360	13.9			14 220	0.3	1.6	25.7
	250 - < 350	816 224	67.7	2 121 950	92.3	4 470 956	94.7	89.2	68.3
	> 350	221 630	18.4	177 000	7.7	238 100	5.0	9.1	5.6
	TOTAL ℓ	1 205 214	100.0	2 298 950	100.0	4 723 276	100.0	100.0	100.0
	AVE PRICE R / HL OR C / ℓ	300.16		299.90		294.37		293.68	277.70
Riesling	200 - < 250								9.2
	250 - < 350			116 150	43.8	247 450	58.7	76.4	64.6
	> 350	136 950	100.0	149 050	56.2	173 790	41.3	23.6	26.2
	TOTAL ℓ	136 950	100.0	265 200	100.0	421 240	100.0	100.0	100.0
	AVE PRICE R / HL OR C / ℓ	370.00		342.93		333.65		323.79	313.12
Semillon *	150 - < 200							0.0	
	200 - < 250							0.1	0.4
	250 - < 350	265 185	89.6	62 220	11.8	138 180	15.2	56.7	51.8
	> 350	30 720	10.4	463 777	88.2	770 001	84.8	43.1	47.9
	TOTAL ℓ	295 905	100.0	525 997	100.0	908 181	100.0	100.0	100.0
	AVE PRICE R / HL OR C / ℓ	313.12		369.84		364.77		332.64	339.03
Semillon Juice	AVE PRICE R / HL OR C / ℓ	51 045	308.00	340 917	389.73	493 620	383.62	308.00	350.00
Blanc de Noir	125 - < 150							0.3	
	200 - < 250								3.0
	250 - < 350	255 960	100.0	388 850	92.6	613 760	95.2	95.8	91.6
	> 350			30 940	7.4	30 940	4.8	4.0	5.4
	TOTAL ℓ	255 960	100.0	419 790	100.0	644 700	100.0	100.0	100.0
	AVE PRICE R / HL OR C / ℓ	250.00		273.11		271.42		266.29	262.51
Other white and blends	100 - < 125							0.0	0.0
	125 - < 150								0.0
	150 - < 200	167 380	1.2	42 070	0.3	42 070	0.2	0.2	1.0
	200 - < 250	4 467 874	32.6	1 684 889	13.3	2 240 749	8.8	16.1	45.1
	250 - < 350	6 541 349	47.7	10 439 712	82.1	22 049 570	86.7	78.0	50.1
	> 350	2 533 593	18.5	545 200	4.3	1 090 319	4.3	5.7	3.8
	TOTAL ℓ	13 710 196	100.0	12 711 871	100.0	25 422 708	100.0	100.0	100.0
	AVE PRICE R / HL OR C / ℓ	290.90		266.71		268.61		274.39	254.85
Fortified	150 - < 200			6 927	100.0	17 206	3.4	0.8	1.1
	200 - < 250							0.0	0.2
	250 - < 300	31 767	4.7					0.4	5.7
	300 - < 350	550 865	81.4			419 370	83.0	56.8	76.5
	> 350	94 239	13.9			68 864	13.6	42.0	16.5
	TOTAL ℓ	676 871	100.0	6 927	100.0	505 440	100.0	100.0	100.0
	AVE PRICE R / HL OR C / ℓ	321.65		150.00		332.16		354.58	346.88
All Varieties	AVE PRICE R / HL OR C / ℓ	30 681 753	355.98	36 013 173	345.04	69 802 784	345.54	338.42	338.35
Rebate Wine	CENT PER LITRE @ 10% ALC/VOL		211.96		216.62		216.42	210.09	206.79
Distilling wine	CENT PER LITRE @ 10% ALC/VOL		96.54		95.97		94.96	92.78	97.43

* Including juice

AVERAGE PRICES OF WINE SOLD IN BULK

TYPE	R / HL OR C / ℓ							
	JANUARY - DECEMBER							JAN-FEB
	2000	2001	2002	2003	2004	2005	2006	2007
CABERNET SAUVIGNON	799.86	802.21	822.51	798.53	687.74	557.12	476.23	428.08
TREND		100.29	102.53	97.08	86.13	81.01	85.48	89.89
CABERNET FRANC	719.23	736.48	702.26	736.52	650.08	384.92	408.12	301.09
TREND		102.40	95.35	104.88	88.26	59.21	106.03	73.77
MERLOT	771.05	766.49	765.88	729.32	619.63	471.33	426.29	445.56
TREND		99.41	99.92	95.23	84.96	76.07	90.44	104.52
PINOTAGE	765.37	730.88	689.85	651.98	519.22	443.73	392.88	399.81
TREND		95.49	94.39	94.51	79.64	85.46	88.54	101.76
RUBY CABERNET	591.01	609.55	614.44	617.91	542.65	411.45	393.36	307.30
TREND		103.14	100.80	100.56	87.82	75.82	95.60	78.12
SHIRAZ	802.80	781.67	748.47	757.73	638.04	548.21	514.37	467.73
TREND		97.37	95.75	101.24	84.20	85.92	93.83	90.93
CINSAUT	408.51	432.56	486.37	540.29	485.66	396.57	349.50	359.84
TREND		105.89	112.44	111.09	89.89	81.66	88.13	102.96
PINOT NOIR	707.26	661.01	631.24	740.05	896.91	652.16	420.45	
TREND		93.46	95.50	117.24	121.20	72.71	64.47	
CHARDONNAY	306.51	327.59	396.06	470.17	485.06	494.22	495.11	447.55
TREND		106.88	120.90	118.71	103.17	101.89	100.18	90.39
SAUVIGNON BLANC	339.81	316.95	409.20	481.06	497.24	522.11	547.53	507.96
TREND		93.27	129.11	117.56	103.36	105.00	104.87	92.77
COLOMBAR	145.71	143.19	203.17	273.69	264.20	277.70	293.68	294.37
TREND		98.27	141.89	134.71	96.53	105.11	105.75	100.23
RIESLING	160.08	151.38	203.81	281.41	281.96	313.12	323.79	333.65
TREND		94.57	134.63	138.07	100.20	111.05	103.41	103.05
SEMILLON	190.19	198.69	240.91	330.08	336.02	332.64	339.03	364.77
TREND		104.47	121.25	137.01	101.80	98.99	101.92	107.59
CHENIN BLANC	160.13	159.46	215.21	302.90	290.08	304.43	317.27	319.14
TREND		99.58	134.96	140.75	95.77	104.95	104.22	100.59
ROSé	331.00	303.96	333.64	369.48	375.02	321.42	317.58	326.40
TREND		91.83	109.76	110.74	101.50	85.71	98.81	102.78
BLANC DE NOIR	167.86	151.85	244.08	357.12	365.96	262.51	266.29	271.42
TREND		90.46	160.74	146.31	102.48	71.73	101.44	101.93
ALL VARIETIES	212.03	229.23	299.36	378.06	354.16	338.35	338.42	345.54
TREND		108.11	130.59	126.29	93.68	95.54	100.02	102.10
ALL RED VARIETIES	575.04	592.84	621.35	634.77	547.18	440.49	406.02	408.38
TREND		103.10	104.81	102.16	86.20	80.50	92.17	100.58
ALL WHITE VARIETIES	145.39	155.74	215.89	291.14	287.97	297.57	310.51	319.51
TREND		107.12	138.62	134.86	98.91	103.33	104.35	102.90

RSA EXPORTS: WINE AND FLAVOURED GRAPE LIQUOR

Litres

PRODUCT		MARCH			6 MONTHS			12 MONTHS		
		2006	2007	Trend	OCT '05 - MAR'06	OCT '06 - MAR'07	Trend	APR '05 - MAR'06	APR '06 - MAR'07	Trend
Chardonnay	P	1 676 427	1 106 136	65.98	5 516 163	7 132 908	129.31	13 539 211	14 678 053	108.41
	B	144 810	294 180	203.15	1 460 264	1 898 167	129.99	3 612 276	4 224 370	116.94
Sauvignon Blanc	P	1 379 624	989 256	71.70	4 744 589	5 558 159	117.15	12 669 004	12 523 909	98.85
	B	39 720	71 680	180.46	926 619	1 099 948	118.71	2 320 059	2 322 353	100.10
Chenin Blanc	P	1 749 275	1 454 609	83.15	6 274 049	6 589 149	105.02	17 658 820	15 355 486	86.96
	B	1 650 613	1 507 938	91.36	7 168 164	9 047 403	126.22	16 879 908	20 912 660	123.89
Other White	P	3 675 952	2 655 650	72.24	18 423 311	15 336 048	83.24	41 183 219	32 587 832	79.13
	B	817 456	853 686	104.43	9 133 273	5 579 224	61.09	21 601 389	14 258 912	66.01
TOTALS WHITE WINE	P	8 481 278	6 205 651	73.17	34 958 112	34 616 264	99.02	85 050 254	75 145 280	88.35
	B	2 652 599	2 727 484	102.82	18 688 320	17 624 742	94.31	44 413 632	41 718 295	93.93
	P+B	11 133 877	8 933 135	80.23	53 646 432	52 241 006	97.38	129 463 886	116 863 575	90.27
Cabernet Sauvignon	P	1 400 441	885 141	63.20	5 591 228	6 425 142	114.91	11 843 380	12 351 519	104.29
	B	72 160	315 432	437.13	598 905	1 885 088	314.76	2 243 555	3 565 946	158.94
Shiraz	P	1 000 875	1 019 001	101.81	4 434 922	7 054 431	159.07	9 747 560	12 364 804	126.85
	B	268 764	75 734	28.18	1 043 067	467 554	44.82	1 931 347	1 021 408	52.89
Pinotage	P	847 314	864 708	102.05	4 333 859	4 519 919	104.29	10 132 323	8 116 043	80.10
	B	445 649	700 311	157.14	2 611 845	4 351 481	166.61	5 673 730	7 132 157	125.70
Merlot	P	1 053 955	575 047	54.56	2 888 039	3 385 449	117.22	6 214 360	6 988 917	112.46
	B	189 360	242 320	127.97	967 857	1 161 113	119.97	2 163 425	1 585 213	73.27
Other Red	P	6 690 598	5 156 958	77.08	30 119 735	28 602 015	94.96	63 108 574	53 683 872	85.07
	B	3 820 090	2 216 345	58.02	16 325 151	17 078 287	104.61	31 191 509	30 554 025	97.96
TOTALS RED WINE	P	10 993 183	8 500 855	77.33	47 367 783	49 986 956	105.53	101 046 197	93 505 155	92.54
	B	4 796 023	3 550 142	74.02	21 546 825	24 943 523	115.76	43 203 566	43 858 749	101.52
	P+B	15 789 206	12 050 997	76.32	68 914 608	74 930 479	108.73	144 249 763	137 363 904	95.23
Blanc de Noir + Rosé	P	933 141	522 681	56.01	2 224 351	2 511 552	112.91	8 204 932	7 106 013	86.61
	B	706 340	344 390	48.76	2 198 360	1 579 435	71.85	6 327 956	8 775 163	138.67
	P+B	1 639 481	867 071	52.89	4 422 711	4 090 987	92.50	14 532 888	15 881 176	109.28
TOTALS NATURAL WINE	P	20 407 602	15 229 187	74.63	84 550 246	87 114 772	103.03	194 301 383	175 756 448	90.46
	B	8 154 962	6 622 016	81.20	42 433 505	44 147 700	104.04	93 945 154	94 352 207	100.43
	P+B	28 562 564	21 851 203	76.50	126 983 751	131 262 472	103.37	288 246 537	270 108 655	93.71
Fortified Wine	P	39 805	11 525	28.95	166 584	265 825	159.57	319 861	442 630	138.38
	B	0	0	-	24 871	0	0.00	81 015	33 454	41.29
	P+B	39 805	11 525	28.95	191 455	265 825	138.84	400 876	476 084	118.76
Sparkling wine	P	92 517	136 117	147.13	736 538	1 051 623	142.78	1 504 049	2 118 831	140.88
TOTALS ALL WINE	P	20 539 924	15 376 829	74.86	85 453 368	88 432 220	103.49	196 125 293	178 317 909	90.92
	B	8 154 962	6 622 016	81.20	42 458 376	44 147 700	103.98	94 026 169	94 385 661	100.38
	P+B	28 694 886	21 998 845	76.66	127 911 744	132 579 920	103.65	290 151 462	272 703 570	93.99
OTHER(e.g. for vinegar, industrial)	P	0	0	-	0	0	-	0	0	-
	B	0	0	-	0	0	-	0	0	-
	P+B	0	0	-	0	0	-	0	0	-
Flavoured Grape Liquor	P	2 250	54	2.40	2 475	12 367	499.68	12 946	16 672	128.78
TOTALS ALL PRODUCTS	P	20 542 174	15 376 883	74.86	85 455 843	88 444 587	103.50	196 138 239	178 334 581	90.92
	B	8 154 962	6 622 016	81.20	42 458 376	44 147 700	103.98	94 026 169	94 385 661	100.38
	P+B	28 697 136	21 998 899	76.66	127 914 219	132 592 287	103.66	290 164 408	272 720 242	93.99

P=Packaged

B=Bulk

SOURCE: DEPARTMENT OF AGRICULTURE, DIRECTORATE FOOD SAFETY AND QUALITY ASSURANCE

RSA EXPORTS: SPIRITS

PRODUCT		MARCH			6 MONTHS			12 MONTHS			Litres
		2006	2007	Trend	OCT '05 -	OCT '06 -	Trend	APR '05 -	APR '06 -	Trend	
					MAR'06	MAR'07		MAR'06	MAR'07		
Brandy	P	15 171	4 632	30.53	58 531	83 750	143.09	142 021	154 660	108.90	
	B	1 264	2 250	178.01	39 164	5 200	13.28	67 564	117 600	174.06	
Grape-, Cane- Unspecified spirit	P	99	0	0.00	801	1 814	226.47	5 169	4 874	94.29	
	B	0	0	-	0	0	-	0	0	-	
Spirit aperitif, Spirit cooler, Bitters	P	45	540	1200.00	4 514	4 830	107.00	7 583	20 547	270.96	
	B	0	0	-	0	0	-	0	0	-	
Whisky	P	2 259	144	6.37	5 904	12 381	209.71	20 532	22 641	110.27	
	B	0	0	-	0	0	-	0	0	-	
Vodka	P	4 080	36 426	892.79	15 351	89 526	583.19	32 706	167 655	512.61	
	B	32 000	30 816	96.30	32 000	65 056	203.30	32 000	202 994	634.36	
Rum	P	135	0	0.00	1 467	1 620	110.43	3 438	3 375	98.17	
	B	0	0	-	0	0	-	0	0	-	
Gin	P	2 235	19 518	873.29	3 559	65 874	1850.91	14 260	92 097	645.84	
	B	0	0	-	0	0	-	0	0	-	
Liqueur, Vermouth, Aperitif	P	333 832	314 231	94.13	1 824 750	2 477 848	135.79	6 745 276	4 827 018	71.56	
	B	0	0	-	0	0	-	0	0	-	
TOTALS SPIRITS	P	357 856	375 491	104.93	1 914 877	2 737 643	142.97	6 970 985	5 292 867	75.93	
	B	33 264	33 066	99.40	71 164	70 256	98.72	99 564	320 594	322.00	
	P+B	391 120	408 557	104.46	1 986 041	2 807 899	141.38	7 070 549	5 613 461	79.39	

P=Packaged

B=Bulk

SOURCE: DEPARTMENT OF AGRICULTURE, DIRECTORATE FOOD SAFETY AND QUALITY ASSURANCE

WINE EXPORTED IN UNDERMENTIONED CONTAINERS JANUARY TO MARCH 2007

COUNTRY	GLASS					TOTAL GLASS JAN-MAR 2007	TOTAL GLASS JAN-MAR 2006	TREND JAN-MAR 2007/2006	BAG-IN-BOX			TOTAL BAG-IN-BOX JAN-MAR 2007	TOTAL BAG-IN-BOX JAN-MAR 2006	TREND JAN-MAR 2007/2006	TETRA PACKS 2007	TETRA PACKS 2006	TREND JAN-MAR 2007/2006	TOTAL LITRE JAN-MRT 2007	TOTAL LITRE JAN-MRT 2006	TREND JAN-MRT 2007/2006
	< 0.750 ℓ	0.750 ℓ	1 ℓ	1.5 ℓ	> 1.5 ℓ				< 3 ℓ	3 ℓ	> 4 ℓ				1 ℓ	1 ℓ				
UNITED KINGDOM	220 662	11 988 797	102 120	363		12 311 942	11 980 720	102.76		1 840 320	1 560	1 841 880	2 119 302	86.91				14 153 822	14 100 022	100.38
SWEDEN	23 748	1 319 697	10 584	1 113	63	1 355 205	1 408 946	96.19	66 618	4 413 096		4 479 714	3 957 120	113.21				5 834 919	5 366 066	108.74
THE NETHERLANDS	5 026	4 529 840		320		4 536 186	5 129 460	88.41	14 688	89 640	1 920	106 248	116 340	91.33				4 641 434	5 245 800	88.48
GERMANY	6 849	3 669 654	80 352	2 783	316	3 759 954	4 152 508	90.55		720	54 400	55 120						3 815 074	4 152 508	91.87
UNITED STATES OF AMERICA	5 880	1 986 219		34 785		2 026 884	1 961 938	103.31		540		540	14 208	3.80				2 027 424	1 976 146	102.59
DENMARK	1 179	1 471 586		54		1 472 819	1 255 564	117.30		452 340		452 340	562 746	80.38				1 925 159	1 818 310	105.88
CANADA	115	1 315 884		184 614		1 500 613	1 759 412	85.29		3 420		3 420			5 196			1 509 229	1 759 412	85.78
BELGIUM	9 852	1 005 914	61 614	567		1 077 947	1 065 554	102.12		19 356	11 640	30 996	36 180	85.67	288			1 109 231	1 091 734	101.60
REPUBLIC OF IRELAND	85 795	927 333		23		1 013 151	1 463 198	69.24		18 720		18 720	15 912	117.65				1 031 871	1 479 110	69.76
FINLAND	8 796	381 569				390 365	448 794	86.98		126 120		126 120	175 860	71.72				516 485	624 654	82.68
SWITZERLAND	1 729	373 631		459	100	375 919	207 141	181.48										375 919	207 141	181.48
KENYA	15 333	95 873	10 089	666		121 961	138 674	87.95	18 736	4 260	216 540	239 536	276 188	86.73				361 497	414 862	87.14
RUSSIA	11 910	339 527				351 437	149 481	235.10										351 437	149 481	235.10
JAPAN	761	338 263				339 024	364 272	93.07		4 188		4 188	4 800	87.25				343 212	369 072	92.99
LATVIA		276 899				276 899	129 285	214.18	26 820	19 200		46 020	21 780	211.29				322 919	151 065	213.76
NORWAY	23	88 308				88 331	106 095	83.26		230 436		230 436	146 256	157.56				318 767	252 351	126.32
TANZANIA	6 841	148 622	2 040	1 053		158 556	135 029	117.42	15 968	2 280	93 020	111 268	141 180	78.81				269 824	276 209	97.69
CHINA		126 329				126 329	43 998	287.12	34 326	29 976		64 302						190 631	43 998	433.27
POLAND	68	164 498				164 566	157 529	104.47			6 000	6 000	13 600	44.12				170 566	171 129	99.67
UNITED ARAB EMIRATES	1 381	110 124	1 035	30		112 570	154 261	72.97	2 400	7 800	37 300	47 500	103 836	45.75				160 070	258 097	62.02
FRANCE	235	140 760				140 995	159 524	88.38										140 995	159 524	88.38
MAURITIUS *	878	117 158	720	12	15	118 783	94 062	126.28	576		1 480	2 056	1 720	119.53				120 839	95 782	126.16
NIGERIA *		90 558				90 558	44 231	204.74								19 260		90 558	63 491	142.83
SOUTH KOREA		11 070				11 070	3 978	278.28										11 070	3 978	278.28
AUSTRALIA		3 069				3 069	120 432	2.55					160					3 069	120 592	2.54
OTHER COUNTRIES	30 667	1 514 266	18 564	3 258	34 326	1 601 081	1 466 998	109.14	16 208	107 148	202 320	325 676	289 360	112.55				1 926 757	1 756 358	109.70
TOTAL	437 728	32 535 448	287 118	230 100	34 820	33 525 214	34 091 084	98.34	196 340	7 369 560	626 180	8 192 080	7 996 548	102.45	5 484	19 260		41 722 778	42 106 892	99.09
AS % OF TOTAL	1.05	77.98	0.69	0.55	0.08	80.35	80.96		0.47	17.66	1.50	19.63	18.99		0.01	0.05		100.00	100.00	

TYPE OF CONTAINER PER COUNTRY AND COUNTRY GROUP AS % OF TOTAL

COUNTRY	GLASS					TOTAL GLASS JAN-MAR 2007	TOTAL GLASS JAN-MAR 2006
	< 0.750 ℓ	0.750 ℓ	1 ℓ	1.5 ℓ	> 1.5 ℓ		
UNITED KINGDOM	50.41	36.85	35.57	0.16		36.72	35.14
SWEDEN	5.43	4.06	3.69	0.48	0.18	4.04	4.13
THE NETHERLANDS	1.15	13.92		0.14		13.53	15.05
GERMANY	1.56	11.28	27.99	1.21	0.91	11.22	12.18
UNITED STATES OF AMERICA	1.34	6.10		15.12		6.05	5.75
DENMARK	0.27	4.52		0.02		4.39	3.68
CANADA	0.03	4.04		80.23		4.48	5.16
BELGIUM	2.25	3.09	21.46	0.25		3.22	3.10
REPUBLIC OF IRELAND	19.60	2.85		0.01		3.02	4.29
FINLAND	2.01	1.17				1.16	1.32
SWITZERLAND	0.39	1.15		0.20	0.29	1.12	0.61
KENYA	3.50	0.29	3.51	0.29		0.36	0.41
RUSSIA	2.72	1.04				1.05	0.44
JAPAN	0.17	1.04				1.01	1.07
LATVIA		0.85				0.83	0.38
NORWAY	0.01	0.27				0.26	0.31
TANZANIA	1.56	0.46	0.71	0.46		0.47	0.40
CHINA		0.39				0.38	0.13
POLAND	0.02	0.51				0.49	0.46
UNITED ARAB EMIRATES	0.32	0.34	0.36	0.01		0.34	0.45
FRANCE	0.05	0.43				0.42	0.47
MAURITIUS *	0.20	0.36	0.25	0.01	0.04	0.35	0.28
NIGERIA *		0.28				0.27	0.13
SOUTH KOREA		0.03				0.03	0.01
AUSTRALIA		0.01				0.01	0.35
OTHER COUNTRIES	7.01	4.65	6.47	1.42	98.58	4.78	4.30
TOTAL	100	100	100	100	100	100	100

COUNTRY	BAG-IN-BOX			TOTAL BAG-IN-BOX JAN-MAR 2007	TOTAL BAG-IN-BOX JAN-MAR 2006
	< 3 ℓ	3 ℓ	> 4 ℓ		
UNITED KINGDOM		24.97	0.25	22.48	26.50
SWEDEN	33.93	59.88		54.68	49.49
THE NETHERLANDS	7.48	1.22	0.31	1.30	1.45
GERMANY		0.01	8.69	0.67	0.00
UNITED STATES OF AMERICA		0.01		0.01	0.18
DENMARK		6.14		5.52	7.04
CANADA		0.05		0.04	0.00
BELGIUM		0.26	1.86	0.38	0.45
REPUBLIC OF IRELAND		0.25		0.23	0.20
FINLAND		1.71		1.54	2.20
SWITZERLAND					0.00
KENYA	9.54	0.06	34.58	2.92	3.45
RUSSIA					0.00
JAPAN		0.06		0.05	0.06
LATVIA	13.66	0.26		0.56	0.27
NORWAY		3.13		2.81	1.83
TANZANIA	8.13	0.03	14.86	1.36	1.77
CHINA	17.48	0.41		0.78	0.00
POLAND			0.96	0.07	0.17
UNITED ARAB EMIRATES	1.22	0.11	5.96	0.58	1.30
FRANCE					0.00
MAURITIUS *	0.29	0.24	0.03	0.03	0.02
NIGERIA *					0.00
SOUTH KOREA					0.00
AUSTRALIA					0.00
OTHER COUNTRIES	8.26	1.45	32.31	3.98	3.62
TOTAL	100	100	100	100	100

COUNTRY	TETRA PACKS 2007	TETRA PACKS 2006
	1 ℓ	1 ℓ
UNITED KINGDOM		
SWEDEN		
THE NETHERLANDS		
GERMANY		
UNITED STATES OF AMERICA		
DENMARK		
CANADA	94.75	
BELGIUM	5.25	
REPUBLIC OF IRELAND		
FINLAND		
SWITZERLAND		
KENYA		
RUSSIA		
JAPAN		
LATVIA		
NORWAY		
TANZANIA		
CHINA		
POLAND		
UNITED ARAB EMIRATES		
FRANCE		
MAURITIUS *		
NIGERIA *		100.00
SOUTH KOREA		
AUSTRALIA		
OTHER COUNTRIES		
TOTAL	100	100

COUNTRY	TOTAL LITRE JAN-MAR 2007	TOTAL LITRE JAN-MAR 2006
	UNITED KINGDOM	33.92
SWEDEN	13.98	12.74
THE NETHERLANDS	11.12	12.46
GERMANY	9.14	9.86
UNITED STATES OF AMERICA	4.86	4.69
DENMARK	4.61	4.32
CANADA	3.62	4.18
BELGIUM	2.66	2.59
REPUBLIC OF IRELAND	2.47	3.51
FINLAND	1.24	1.48
SWITZERLAND	0.90	0.49
KENYA	0.87	0.99
RUSSIA	0.84	0.36
JAPAN	0.82	0.88
LATVIA	0.77	0.36
NORWAY	0.76	0.60
TANZANIA	0.65	0.66
CHINA	0.46	0.10
POLAND	0.41	0.41
UNITED ARAB EMIRATES	0.38	0.61
FRANCE	0.34	0.38
MAURITIUS *	0.29	0.23
NIGERIA *	0.22	0.15
SOUTH KOREA	0.03	0.01
AUSTRALIA	0.01	0.29
OTHER COUNTRIES	4.62	4.17
TOTAL	100	100

*As from 1 July 2006 all packaged exports to previously exempted African countries and surrounding islands are reflected in full.

SOURCE: DEPARTMENT OF AGRICULTURE, DIRECTORATE FOOD SAFETY AND QUALITY ASSURANCE

VINPRO 2006 PRODUCTION PLAN (PRODUCTION COSTS AND TARGET INCOME)

COMPILED AND WRITTEN BY: GERT VAN WYK

The 2006 Vinpro production plan is available on the SAWIS website (www.sawis.co.za) under Statistics. The website lists all the study areas including the industry average example on this page. Within each study area you will be able to find the production costs and the target income pertaining to the specific area.

PRODUCTION COST FOR WINE GRAPES COST ITEMS AS RAND PER HECTARE 2006	
INDUSTRY (IRRIGATION)	
COST STRUCTURE	RAND PER HA
DIRECT COST	
FERTILIZER	756
PESTICIDE CONTROL	1,176
HERBICIDE CONTROL	344
REPAIR & BINDING MATERIAL	115
Subtotal	2,391
LABOUR	
SUPERVISION	1,146
PERMANENT LABOUR	4,185
SEASONAL LABOUR	1,547
Subtotal	6,878
MECHANISATION	
FUEL	1,106
REPAIR AND SPARE PARTS	1,468
LISENCES AND ASSURANCE	308
TRANSPORT HIRED	122
Subtotal	3,004
FIXED IMPROVEMENTS	
REPAIR AND MAINTENANCE	497
ASSURANCE	218
Subtotal	715
GENERAL EXPENDITURES	
ELECTRICITY	803
WATER	647
RSC RATES	142
ADMINISTRATION	1,019
Subtotal	2,611
TOTAL CASH EXPENDITURES	15,599
PROVISION FOR RENEWAL	
VINEYARDS	5,733
FIXED IMPROVEMENTS	2,802
LOOSE ASSETS	538
TOTAL EXPENDITURES	21,332

AVERAGE AREA PLANTED (HA)	74.59
AREA IRRIGATED (%)	94.31
AVERAGE AGE COMPOSITION (%)	
3 YEARS & YOUNGER	15.71
BETWEEN 4 & 7 YEARS	27.68
BETWEEN 8 & 15 YEARS	32.38
BETWEEN 16 & 20 YEARS	13.69
OLDER THAN 20 YEARS	10.55
AVERAGE YIELD (TON PER HA)	15.34
CASH EXPENDITURES (RAND PER TON)	1,017
TOTAL EXPENDITURES (RAND PER TON)	1,391

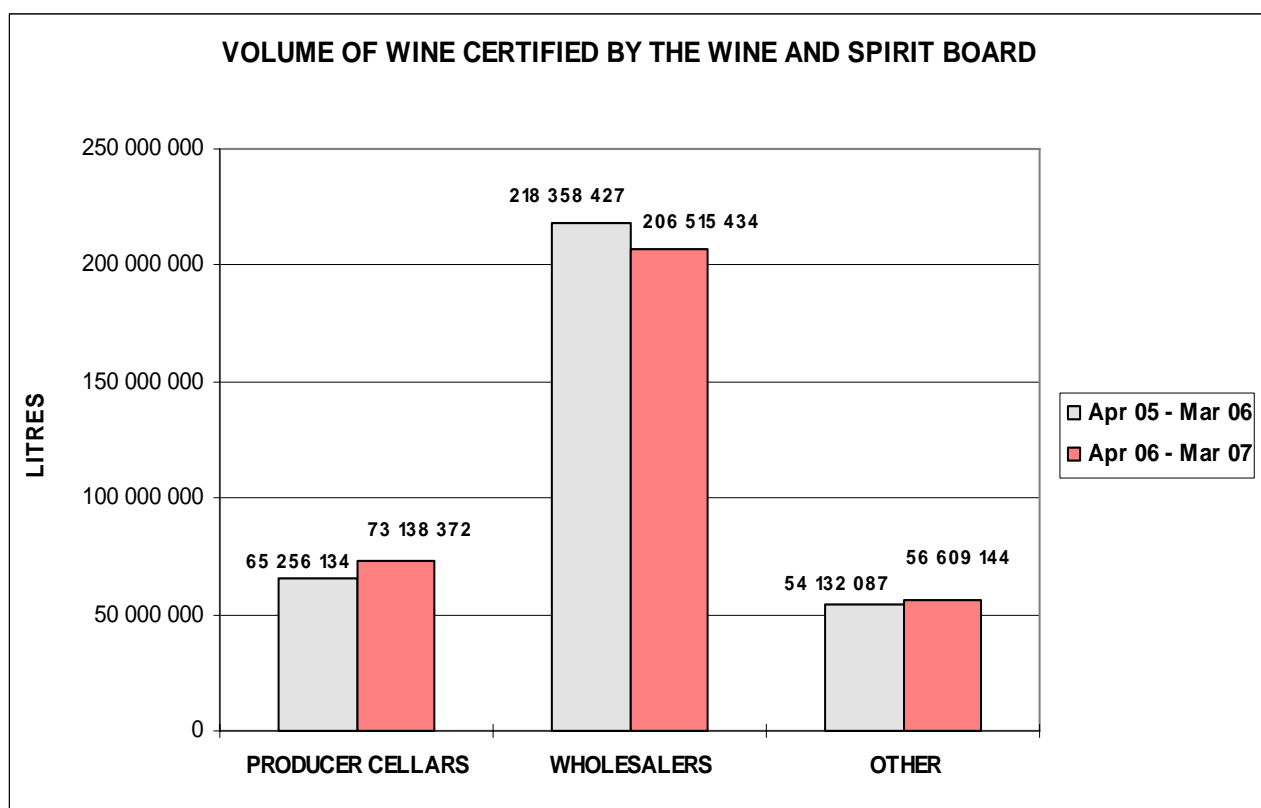
For more information please contact: Gert van Wyk
 Agricultural Economist
vanwykg@vinpro.co.za
 +27 (0) 23 347 2795

VOLUME OF WINE CERTIFIED (LITRES)

	1 MONTH			3 MONTHS			6 MONTHS			12 MONTHS		
	Mar-06	Mar-07	Trend	Jan-06 Mar-06	Jan-07 Mar-07	Trend	Oct-05 Mar-06	Oct-06 Mar-07	Trend	Apr-05 Mar-06	Apr-06 Mar-07	Trend
PRODUCER CELLARS												
Estate Wine	0	0		0	0		0	0		0	0	
Wine of Origin	2 416 338	3 171 617	131	6 817 385	9 145 818	134	14 522 959	21 478 765	148	36 530 237	42 173 933	115
Geographical Unit Wine	2 924 602	1 983 229	68	7 303 350	5 615 757	77	13 491 020	14 129 775	105	28 725 897	30 964 439	108
SUB TOTAL	5 340 940	5 154 846	97	14 120 735	14 761 575	105	28 013 979	35 608 540	127	65 256 134	73 138 372	112
WHOLESALERS												
Estate Wine	0	0		0	0		0	0		0	0	
Wine of Origin	3 231 079	2 465 407	76	6 488 630	6 859 614	106	13 468 762	13 985 863	104	30 130 873	31 257 656	104
Geographical Unit Wine	16 572 286	15 515 607	94	39 331 050	43 075 110	110	82 481 658	85 267 469	103	188 227 554	175 257 778	93
SUB TOTAL	19 803 365	17 981 014	91	45 819 680	49 934 724	109	95 950 420	99 253 332	103	218 358 427	206 515 434	95
OTHER												
Estate Wine	734 006	433 953	59	1 762 223	1 612 365	91	3 601 754	3 677 124	102	7 836 208	7 990 737	102
Wine of Origin	3 226 616	2 531 776	78	6 821 542	7 219 111	106	14 777 295	16 790 517	114	31 121 004	33 256 236	107
Geographical Unit Wine	1 318 511	1 188 018	90	3 172 846	3 408 953	107	6 770 847	7 685 060	114	15 174 875	15 362 171	101
SUB TOTAL	5 279 133	4 153 747	79	11 756 611	12 240 429	104	25 149 896	28 152 701	112	54 132 087	56 609 144	105
TOTAL	30 423 438	27 289 607	90	71 697 026	76 936 728	107	149 114 295	163 014 573	109	337 746 648	336 262 950	100

CERTIFIED BULK EXPORTS (included in above figures)	1 MONTH			3 MONTHS			6 MONTHS			12 MONTHS		
	Mar-06	Mar-07	Trend	Jan-06 Mar-06	Jan-07 Mar-07	Trend	Oct-05 Mar-06	Oct-06 Mar-07	Trend	Apr-05 Mar-06	Apr-06 Mar-07	Trend
	8 966 874	7 467 056	83	22 869 903	24 848 126	109	45 375 012	51 824 350	114	102 373 050	107 365 830	105

*The total volume of wine certified in the 2006 calendar year made up 46.6% of the 2006 wine production (52.9%-2005,44.1%-2004,38.5%-2003,43.7%-2002)



INDUSTRY INFORMATION COMMITTEE MEMBERS

Andries van Tonder - SALBA
 Diaan de Villiers - SALBA
 Paiter Botha - Vinpro
 Bowen Botha - WCSA
 Marius Erasmus - WCSA
 Elias Holtzkampf - SALBA
 Jan Booyesen - Winetech

Francois Malan - CEWPA
 Jaco Potgieter - SALBA
 Jacques Jordaan - SALBA
 Su Birch - WOSA
 Chris Albertyn - SALBA
 Pierre Blake - OWB