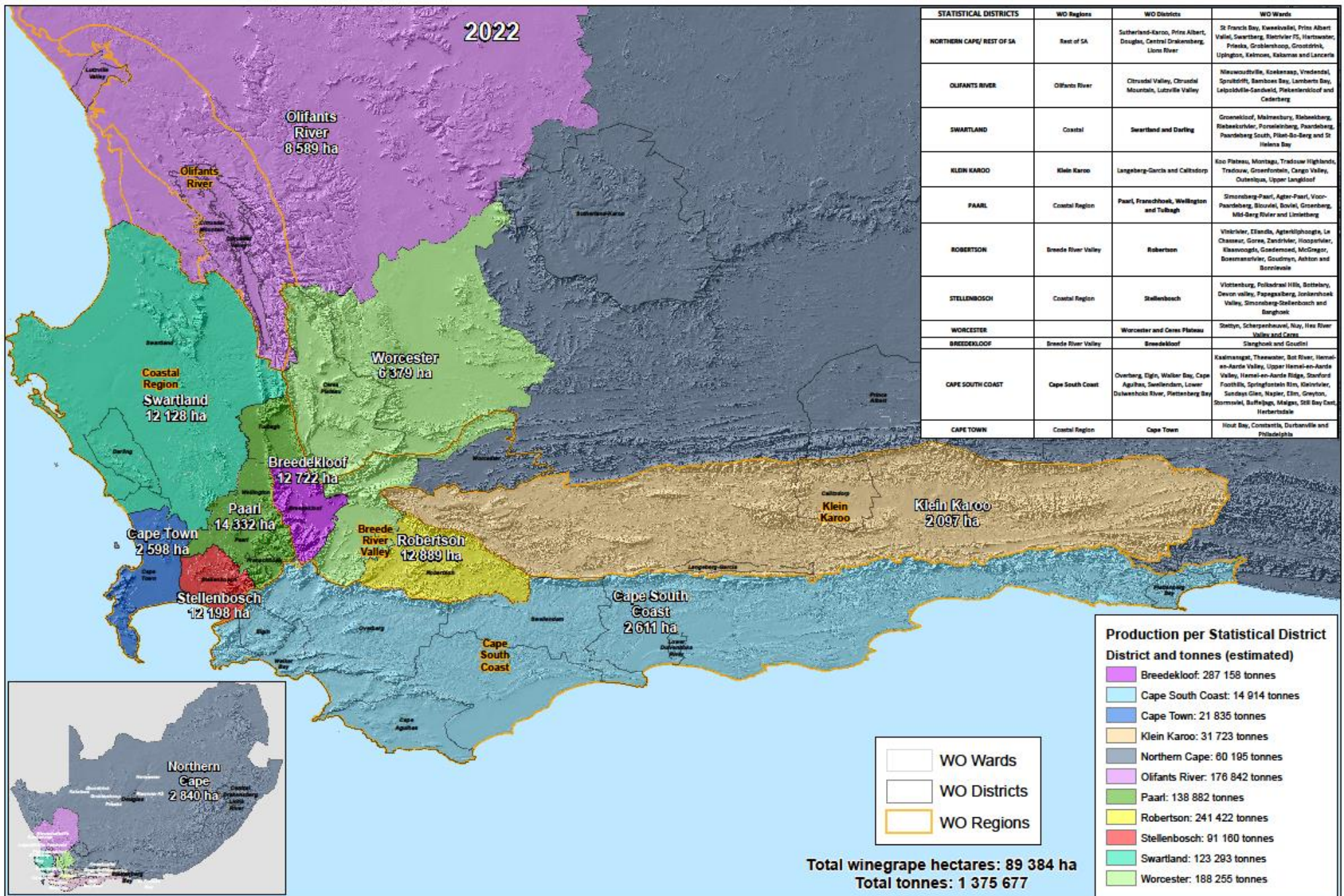


2022



| STATISTICAL DISTRICTS     | WO Regions          | WO Districts   | WO Wards  |
|---------------------------|---------------------|--|---|
| NORTHERN CAPE/ REST OF SA | Rest of SA          | Sutherland-Caroo, Prins Albert, Douglas, Central Drakensberg, Lions River                      | St Francis Bay, Kweekvallei, Prins Albert Vallei, Swartberg, Rietvliet 75, Hartswater, Prieska, Grootbushoep, Grootdrink, Uppington, Kelmson, Babame and Lancelotti   |
| OLIFANTS RIVER            | Olifants River      | Citrusdal Valley, Citrusdal Mountain, Lutzville Valley   | Nieuwoudtville, Koelenaap, Vredendal, Spruitdriif, Bamboes Bay, Lamberts Bay, Laopoldville-Sandveld, Plettenkloof and Cedarberg   |
| SWARTLAND                 | Coastal             | Swartland and Darling  | Groenekloof, Malmsbury, Riebenkberg, Riebenkvlief, Porselienberg, Paardeberg, Paardeberg South, Plet-Sa-Berg and St Helena Bay  |
| KLEIN KAROO               | Klein Karoo         | Langeberg-Garcia and Callitdorp  | Koo Platou, Montagu, Tradouw Highlands, Tradouw, Groentebos, Cango Valley, Ounelipa, Upper Langkloof  |
| PAARL                     | Coastal Region      | Paarl, Franschoek, Willington and Tulbagh  | Simonsburg-Paarl, Ager-Paarl, Voor-Paardeberg, Blouval, Bovie, Gzenberg, Mid-Berg River and Lintelberg  |
| ROBERTSON                 | Breede River Valley | Robertson  | Vinrivier, Elands, Agterkloofhoogte, Le Chasseur, Gores, Zandvliet, Hoopsvliet, Klaarvoogd, Goedemoed, McGregor, Boersmansvliet, Goudmyn, Ashton and Borelvalle   |
| STELLENBOSCH              | Coastal Region      | Stellenbosch   | Vlottenburg, Polkadraai Hills, Bittelberg, Devon valley, Papegaaiberg, Jonkershoek Valley, Simonsburg-Stellenbosch and Barghoek   |
| WORCESTER                 |                     | Worcester and Ceres Plateau  | Gettyn, Scherpenheuvel, Nuy, Hee River Valley and Ceres   |
| BREDEKLOOF                | Breede River Valley | Breedekloof  | Slanghoek and Goudini   |
| CAPE SOUTH COAST          | Cape South Coast    | Overberg, Egin, Walker Bay, Cape Agulhas, Swellendam, Lower Duivenhokke River, Plettenberg Bay | Kaalmangat, Theewater, Bot River, Hemel-en-Aarde Valley, Upper Hemel-en-Aarde Valley, Hemel-en-Aarde Ridge, Stanford Foot Hills, Springkopskloof, Kleinrivier, Sundays Glen, Napier, Elm, Gwynton, Stormvlei, Buffelskop, Hedges, Still Bay East, Herbrandale |
| CAPE TOWN                 | Coastal Region      | Cape Town  | Hour Bay, Constantia, Durbanville and Proteaflats   |

**Production per Statistical District**  
District and tonnes (estimated)

- Breede-kloof: 287 158 tonnes
- Cape South Coast: 14 914 tonnes
- Cape Town: 21 835 tonnes
- Klein Karoo: 31 723 tonnes
- Northern Cape: 80 195 tonnes
- Olifants River: 176 842 tonnes
- Paarl: 138 882 tonnes
- Robertson: 241 422 tonnes
- Stellenbosch: 91 160 tonnes
- Swartland: 123 293 tonnes
- Worcester: 188 255 tonnes

|   |              |
|---|--------------|
| <span style="display: inline-block; width: 15px; height: 15px; border: 1px solid black; margin-right: 5px;"></span> | WO Wards     |
| <span style="display: inline-block; width: 15px; height: 15px; border: 2px solid black; margin-right: 5px;"></span> | WO Districts |
| <span style="display: inline-block; width: 15px; height: 15px; border: 3px solid black; margin-right: 5px;"></span> | WO Regions   |

**Total winegrape hectares: 89 384 ha**  
**Total tonnes: 1 375 677**

