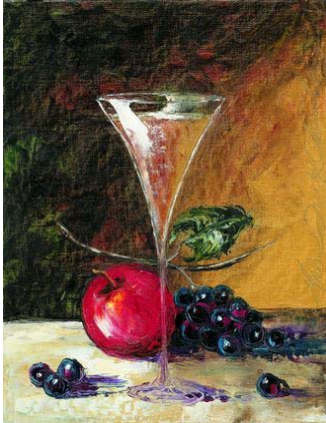


# Wine Industry

I N F O R M A T I O N

## September 2008



In this issue

- DOMESTIC SALES p2
- PRICE RANGES p3
- EXPORTS p10
- CERTIFICATION p12

### STRONG GROWTH IN WINE SALES

Total sales of natural wine grew by approximately 16% during the twelve months ending July 2008 (page 2). Domestic sales and exports increased by 5% and 27% respectively. The August figures regarding exports further accentuate the strong growth. Total exports grew by 31,4% (page 10), with packaged and bulk wine showing growth rates of 15,2% and 60,5% respectively (page 11). The strong growth in bulk exports resulted in packaged wine now only accounting for 56% of exports. In 2004 packaged wine represented 72,2% of total natural wine exports, after which it experienced a percentage decrease every year to reach 61,6% in 2007. The growth in bulk exports currently represents 62 million litres, also refer to "Exports of natural wine March 2007 to April 2008" on page 15 in the April 2008 edition of Wine Industry Information.

The countries responsible for the strong growth in bulk exports are as follows:

- Angola 16 million litres
- Germany 13 million litres
- Australia and New Zealand 10 million litres
- Russia 9 million litres
- USA 5 million litres
- Canada, Switzerland and China 2 million litres each

The sustainability of bulk exports at discounted prices (R1,70/litre for red wine to Angola) were also mentioned in the April 2008 edition. However, recent wine exports to Angola were sold at R4,00/litre, a considerable improvement in price. Nonetheless, the weaker exchange rate still plays a role and experts in the industry are of the opinion that the sustainability of the strong growth in bulk exports are still uncertain.

Also in this issue - price ranges in which wine were sold in bulk for the period January to July 2008 (pages 3 to 8), average prices of wine sold in bulk according to vintage (page 9) and volume of wine certified during August 2008 (page 12).

SAWIS-greetings until October

Robin

A PUBLICATION OF:

 **SAWIS**

SPONSORED BY:

  
**B R E N N - O - K E M**  
RESPONSIBLE SERVICE PROVIDER AND  
SUPPLIER TO THE SA WINE INDUSTRY

FOR ANY ENQUIRIES CONTACT:

Robin Thomas  
Tel: (021) 807 5719  
E-mail: [robin@sawis.co.za](mailto:robin@sawis.co.za)  
Web page: [www.sawis.co.za](http://www.sawis.co.za)

# DOMESTIC SALES AND EXPORTS OF NATURAL WINE

## DOMESTIC SALES OF NATURAL WINE

GROSS LITRE

	1 MONTH		3 MONTHS				6 MONTHS				12 MONTHS				MARKET SHARE	
	JUL 2007	TREND	MAY 2007	JUL 2007	MAY 2008	JUL 2008	FEB 2007	JUL 2007	FEB 2008	JUL 2008	AUG 2006	JUL 2007	AUG 2007	JUL 2008	AUG 2007	JUL 2008
Wholesalers	13 592 657		40 851 202		41 823 950		81 597 694		80 783 098		169 029 449		169 254 635		52.92	
Private Cellars	2 746 774		9 012 442		9 855 150		17 332 748		19 257 278		35 030 748		40 178 375		12.56	
Producer Cellars	8 103 372		23 640 137		26 683 539		47 025 012		51 233 042		98 719 542		110 405 856		34.52	
<b>SUB TOTAL</b>	<b>24 442 803</b>	<b>116.71</b>	<b>73 503 781</b>	<b>106.61</b>	<b>78 362 639</b>	<b>106.61</b>	<b>145 955 454</b>	<b>103.64</b>	<b>151 273 418</b>	<b>103.64</b>	<b>302 779 739</b>	<b>105.63</b>	<b>319 838 866</b>	<b>105.63</b>	<b>100.00</b>	
Wine component of alc fruit bev	0	0	0	0	0	0	0	0	0	0	1 476 551	0	0	0.00		
<b>TOTAL</b>	<b>24 442 803</b>	<b>116.71</b>	<b>73 503 781</b>	<b>106.61</b>	<b>78 362 639</b>	<b>106.61</b>	<b>145 955 454</b>	<b>103.64</b>	<b>151 273 418</b>	<b>103.64</b>	<b>304 256 290</b>	<b>105.12</b>	<b>319 838 866</b>	<b>105.12</b>	<b>100.00</b>	

Included in these figures are the sales of locally bottled imported natural wine

## EXPORT OF NATURAL WINE

GROSS LITRE

	1 MONTH		3 MONTHS				6 MONTHS				12 MONTHS				MARKET SHARE	
	JUL 2007	TREND	MAY 2007	JUL 2007	MAY 2008	JUL 2008	FEB 2007	JUL 2007	FEB 2008	JUL 2008	AUG 2006	JUL 2007	AUG 2007	JUL 2008	AUG 2007	JUL 2008
<b>TOTAL</b>	<b>29 513 870</b>	<b>128.79</b>	<b>88 600 935</b>	<b>120.58</b>	<b>106 836 373</b>	<b>120.58</b>	<b>152 231 740</b>	<b>131.06</b>	<b>199 519 267</b>	<b>131.06</b>	<b>285 281 864</b>	<b>127.37</b>	<b>363 350 207</b>	<b>127.37</b>	<b>100.00</b>	

## DOMESTIC SALES AND EXPORT OF NATURAL WINE

GROSS LITRE

	1 MONTH		3 MONTHS				6 MONTHS				12 MONTHS				MARKET SHARE	
	JUL 2007	TREND	MAY 2007	JUL 2007	MAY 2008	JUL 2008	FEB 2007	JUL 2007	FEB 2008	JUL 2008	AUG 2006	JUL 2007	AUG 2007	JUL 2008	AUG 2007	JUL 2008
<b>TOTAL</b>	<b>53 956 673</b>	<b>123.32</b>	<b>162 104 716</b>	<b>114.25</b>	<b>185 199 012</b>	<b>114.25</b>	<b>298 187 194</b>	<b>117.64</b>	<b>350 792 685</b>	<b>117.64</b>	<b>589 538 154</b>	<b>115.89</b>	<b>683 189 073</b>	<b>115.89</b>	<b>100.00</b>	

SOURCE FOR EXPORT FIGURES: DEPARTMENT OF AGRICULTURE, DIRECTORATE FOOD SAFETY AND QUALITY ASSURANCE



TYPE	ORANGE RIVER		OLIFANTS RIVER		MALMESBURY		LITTLE KAROO		PAARL		ROBERTSON		STELLENBOSCH		WORCESTER		INDUSTRY 2008		INDUSTRY %		
	R / HL OF C / l	LITRES	%	LITRES	%	LITRES	%	LITRES	%	LITRES	%	LITRES	%	LITRES	%	LITRES	%	LITRES	%	2007	2006
Merlot	< 100																				
	100 - < 150								38 345	2.3				2 100	0.2			40 445	0.5	0.0	0.1
	150 - < 200							24 500	1.5									264 530	3.2	0.0	4.0
	200 - < 250							13 291	0.8									101 780	1.2	0.0	0.6
	250 - < 300							576 029	34.7		97 500	11.6						379 034	4.6	8.1	5.6
	300 - < 350		469 987	100.0				204 897	12.3		273 001	32.6						2 203 957	26.7	31.3	33.7
	350 - < 400							238 060	70.9		28 620	3.4						1 392 185	16.9	14.5	11.9
	400 - < 450							5 990	1.8		35 080	4.3						189 404	2.3	5.3	4.3
	450 - < 500									351 068	21.1	9 800	1.2					823 787	10.0	5.8	8.7
	500 - < 550									361 470	21.8	285 204	34.1					2 130 566	25.8	14.9	6.6
	550 - < 600							18 777	5.6		45 020	2.7						136 537	1.7	5.5	7.0
	600 - < 650									8 700	0.5	85 190	10.2					336 555	4.1	2.9	5.3
	650 - < 700																	31 320	0.4	4.0	4.0
	700 - < 750									2 310	0.1							30 080	0.4	0.7	4.1
	750 - < 800																			0.3	0.0
800 - < 850																	20 700	0.4	0.4	1.9	
850 - < 900																				0.0	
900 - < 950																				0.0	
950 - < 1000																				0.1	
> 1000																				0.0	
TOTAL £		469 987	100.0		333.52		226 840	100.0	1 660 710	411.09	837 155	100.0	1 109 899	100.0	3 617 267	100.0	8 257 570	100.0	396.68	426.29	
AVE PRICE			309.40		333.52		231.66				414.18		451.14		423.27		408.25				
Shiraz	< 100																				
	100 - < 150								14 120	0.7			10 070	1.2			10 070	0.1	0.1	0.1	
	150 - < 200							93 600	4.4								14 120	0.1	0.7	0.2	
	200 - < 250							164 610	7.8		258 445	11.6						93 600	0.8	1.0	0.3
	250 - < 300							309 816	14.7		847 310	37.9						613 255	4.9	9.6	5.3
	300 - < 350		1 007 205	56.5		11.2	80 120	46.3	484 838	23.0	33 320	1.5						3 776 125	30.3	17.0	14.4
	350 - < 400		767 414	43.0					162 796	7.7	517 560	23.2						2 100 989	16.8	17.1	15.6
	400 - < 450		8 330	0.5		0.4			410 650	19.5	45 180	2.0						1 140 216	9.1	10.4	7.2
	450 - < 500								42 661	2.0	383 391	17.2						752 798	6.0	7.2	10.9
	500 - < 550								191 270	9.1	3 500	0.2						1 325 904	10.6	15.5	7.8
	550 - < 600								129 270	6.1	54 800	2.5						755 707	6.3	4.3	7.6
	600 - < 650								74 840	3.6	47 630	2.1						434 571	3.5	3.6	7.5
	650 - < 700								9 970	0.5								1 195 274	9.6	8.6	5.5
	700 - < 750								15 057	0.7								167 665	1.3	0.4	4.1
	750 - < 800																	45 047	0.4	0.0	2.1
800 - < 850																				3.1	
850 - < 900																				0.1	
900 - < 950																				0.1	
950 - < 1000																				0.3	
> 1000																				1.3	
TOTAL £		1 782 948	100.0	1 385 333	633.44	173 080	100.0	2 103 498	419.09	2 233 130	100.0	863 953	100.0	3 937 082	100.0	12 479 025	100.0	458.12	514.37		
AVE PRICE			352.98		633.44	295.22				412.55		533.25		405.47		434.16					
Pinotage	< 100																				
	100 - < 150								5 965	0.2											
	150 - < 200																				
	200 - < 250																				
	250 - < 300								68 360	10.1											
	300 - < 350		550 350	90.4		47.1	26 258	55.4	92 400	3.6	122 870	35.3						283 536	3.3	7.7	1.6
	350 - < 400		58 440	9.6					297 223	11.7	27 175	7.8						2 275 953	26.3	35.3	41.3
	400 - < 450								1 138 412	45.0	77 164	22.2						1 569 723	18.1	13.0	8.5
	450 - < 500								360 670	14.2	96 934	27.9						1 697 700	19.6	17.3	27.4
	500 - < 550								45 100	1.8	23 720	6.8						367 050	4.3	10.3	8.3
	550 - < 600								351 240	13.9								699 200	8.1	6.2	5.4
	600 - < 650								178 290	7.0								548 975	6.4	6.2	2.1
	650 - < 700								5 340	0.2								193 440	2.2	2.2	1.0
	700 - < 750																	25 340	0.3	0.3	2.4
	750 - < 800																				0.9
800 - < 850																				0.0	
> 1000																				0.0	
TOTAL £		608 790	100.0	677 361	342.86	47 393	100.0	2 531 951	449.42	347 863	100.0	1 574 241	100.0	2 855 763	100.0	8 643 362	100.0	396.68	426.29		
AVE PRICE			334.34		342.86	293.24				396.64		468.27		366.35		405.97					
Pinot Noir	300 - < 350																				
	350 - < 400																				
	400 - < 450																				
	500 - < 550																				
	650 - < 700																				
	700 - < 750																				
TOTAL £																					
AVE PRICE																					
TOTAL £																					
AVE PRICE																					

TYPE	PRICE RANGE R / HL OF C / L		ORANGE RIVER		MALMESBURY		LITTLE KAROO		PAARL		ROBERTSON		STELLENBOSCH		WORCESTER		INDUSTRY 2008		INDUSTRY %				
	LITRES	%	LITRES	%	LITRES	%	LITRES	%	LITRES	%	LITRES	%	LITRES	%	LITRES	%	LITRES	%	LITRES	%	2007	2006	
Cinsaut	150 - < 200				146618	9.7											146618	3.9			0.0	1.3	
	200 - < 250				210497	13.9											26650	1.8			2.4	1.6	
	250 - < 300				301365	86.1											951116	63.9			35.5	20.5	
	300 - < 350				48660	13.9											282235	19.0			29.9	36.4	
	350 - < 400				953032	62.8											228477	15.3			25.0	9.9	
	400 - < 450				14938	1.0											15158	0.4			6.4	6.9	
	450 - < 500																				0.1	18.8	
	500 - < 550																				0.0	1.4	
	550 - < 600																				0.0	3.1	
	700 - < 750																				0.0	0.0	
TOTAL L					1516730	100.0				331.21	121850	100.0	297320	100.0	1488478	100.0	3774403	100.0	100.0	100.0	317.42	349.50	
AVE PRICE					350025	271.12				338.25	275.28	338.25	285.94	338.25	306.53	306.53	317.42	306.53	306.53	317.42	317.42	349.50	
Rosé and Blanc de noir	100 - < 150																57180	15.6			0.4	0.1	
	150 - < 200				21890	1.9			13918	1.1							35808	0.2			3.7	0.1	
	200 - < 250				438854	37.2		286080	76.6	85710	6.6	170800	4.8	6080	1.7	104400	1.3	653070	4.3		7.5	0.6	
	250 - < 300				88000	11.9		29275	7.8	210110	16.1	1343099	37.8	155961	42.7	2948900	37.9	5214199	34.1		44.3	49.6	
	300 - < 350				651560	88.1		58080	15.6	312830	23.9	973649	27.4	38190	10.4	1960565	25.2	4169034	27.3		20.4	21.3	
	350 - < 400									594648	45.5	872104	24.5	108180	29.6	2550929	32.8	4655771	30.4		19.3	22.4	
	400 - < 450									76830	5.9	46660	1.3			190160	2.4	313640	2.1		2.8	5.0	
	450 - < 500									5370	0.4	3036	0.1			8406	0.1	8406	0.1		0.1	0.2	
	500 - < 550											143880	4.0			24000	0.3	182687	1.2		1.1	0.8	
	550 - < 600									7940	0.6						7940	0.1			0.2	0.0	
600 - < 650																				0.1	0.0		
TOTAL L					739580	100.0	373435	100.0	1307356	100.0	3552218	100.0	365591	100.0	7778954	100.0	15297755	100.0	100.0	100.0	297.13	304.68	
AVE PRICE					303.45	319.12	224.87	334.53	318.98	318.98	318.98	270.58	309.87	311.48	311.48	311.48	311.48	311.48	311.48	311.48	311.48	304.68	
Other red and blends	100 - < 150																18910	0.3			1.8	1.2	
	150 - < 200				1992700	21.7			493081	8.8	13140	0.2	215947	14.3	279920	4.5	3035278	9.2			11.8	1.0	
	200 - < 250				548280	6.0			492536	8.8	418210	7.1	330755	21.9	796220	12.9	4388171	13.4			3.8	2.1	
	250 - < 300	6.440	100.0		845850	9.2		71162	26.6	1268232	22.6	1268786	21.4	191250	12.7	1839426	29.9	6221086	18.9			12.5	14.5
	300 - < 350				281273	3.1		181680	67.8	1865946	33.2	593911	10.0	132465	8.8	2033063	33.0	6090467	18.5			24.5	17.8
	350 - < 400				3576038	39.0				486185	8.6	1038526	17.5	181747	12.1	381336	6.2	5721212	17.4			11.0	31.1
	400 - < 450				1925278	21.0				185678	3.3	963483	16.3	16140	1.1	479269	7.8	3806098	11.0			21.2	14.0
	450 - < 500									289310	5.1	136030	2.3	79833	5.3	77760	1.3	582933	1.8			2.0	2.6
	500 - < 550									191070	3.4	1484427	25.1	54970	3.6	201632	3.3	2030923	6.2			7.4	5.0
	550 - < 600									4880	0.1			48530	3.1	35192	0.6	103363	0.3			1.3	4.9
600 - < 650									113000	2.0			83530	5.5	21120	0.3	217650	0.7			1.3	1.9	
650 - < 700													8646	0.6			74986	0.2			0.0	1.8	
700 - < 750									213290	3.8			77340	5.1			290630	0.9			0.1	0.4	
750 - < 800													4150	0.3			4150	0.0			0.0	0.2	
800 - < 850													1000	0.1			27580	0.1			0.1	0.1	
900 - < 950																					0.0	0.1	
> 1000											3626	0.1					342804	1.0			1.1	1.3	
TOTAL L	6.440	100.0	9169419	100.0	4193714	100.0	267942	100.0	5622118	100.0	5920139	100.0	1506073	100.0	6155738	100.0	32843593	100.0	100.0	100.0	349.64	386.66	
AVE PRICE	296.42	296.42	326.01	343.72	304.47	343.72	304.47	331.76	331.76	331.76	331.76	327.96	301.93	331.76	331.76	331.76	331.76	331.76	331.76	331.76	331.76	331.76	

TYPE	PRICE RANGE R / HL OF C / l	ORANGE RIVER		OLIFANTS RIVER		MALMESBURY		LITTLE KAROO		PAARL		ROBERTSON		STELLENBOSCH		WORCESTER		INDUSTRY 2008		INDUSTRY %		
		LITRES	%	LITRES	%	LITRES	%	LITRES	%	LITRES	%	LITRES	%	LITRES	%	LITRES	%	LITRES	%	2007	2006	
Chardonnay	100 - < 150											18 358	0.3				4 205	18 358	0.1		0.0	
	150 - < 200																	4 205	0.0		0.0	
	200 - < 250																				0.0	
	250 - < 300																				0.0	
	300 - < 350			553 294	69.7				31 380	12.7	47 650	4.5	37 164	0.7				6 454	74 998	0.5		0.4
	350 - < 400										68 481	6.5	46 500	0.8				264 460	907 104	5.9		2.3
	400 - < 450										13 705	1.3	865 154	15.3				307 178	962 364	6.3		2.9
	450 - < 500			24 039	3.0	39 460	12.7	101 760	41.1	73 348	29.6	13 705	1.3	865 154	15.3			1 467 865	2 511 963	16.4		14.3
	500 - < 550			129 850	16.4	59 886	19.2	20 800	8.4	20 800	8.4	291 743	27.6	1 357 921	24.0			1 470 433	3 335 533	21.8		23.0
	550 - < 600			64 832	8.2	154 760	49.7	20 432	8.2	20 432	8.2	357 350	33.8	2 160 792	38.2			2 943 762	5 796 588	37.9		44.9
	600 - < 650					17 400	5.6				138 660	13.1	446 150	7.9				566 620	1 174 649	7.7		11.6
	650 - < 700										55 500	5.3	149 590	2.6				217 090	1 174 649	7.7		11.6
	700 - < 750			22 060	2.8	40 120	12.9				5 300	0.5						75 720	130 870	0.9		0.0
	750 - < 800										71 180	6.7							22 060	0.1		0.0
800 - < 850																		71 180	0.5		0.0	
850 - < 900																					0.0	
900 - < 950																					0.0	
950 - < 1000												59 230	1.0								0.0	
> 1000																					0.0	
1050 - < 1100																					0.0	
1100 - < 1150																					0.0	
1200 - < 1250																					0.0	
TOTAL l			794 075	100.0	311 626	100.0	247 720	100.0	394 533	515.13	1 055 849	100.0	5 654 216	100.0	136 229	100.0	7 086 697	15 296 412	100.0	100.0	100.0	
AVE PRICE			375.92		509.83		394.53		492.48		515.13		492.48		539.57		474.77	474.77	478.96	474.14	495.11	
AVE PRICE							31 528	350.00	706 003	393.65	63 481	380.00	706 003	393.65	566 253	402.19	566 253	402.19	395.55	457.42	476.18	
150 - < 200										21 850	1.6							173 690	1.6		0.2	
200 - < 250										54 107	1.4							131 050	1.6		0.8	
250 - < 300										20 260	1.5	128 420	3.2					226 066	3.0		3.1	
300 - < 350										30 300	0.8							374 746	3.0		1.7	
350 - < 400																		111 300	1.1		1.3	
400 - < 450								21 850	33.3	172 034	12.5	7 560	0.2					48 600	0.6		3.5	
450 - < 500			194 266	78.2	6 150	9.5	43 733	66.7		179 710	13.0	512 001	12.8					1 248 211	17.0		13.7	
500 - < 550			54 040	21.8						656 487	47.7	666 670	16.7					2 216 807	36.6		6.4	
550 - < 600										266 374	19.3	1 218 217	30.6					1 355 762	22.4		13.7	
600 - < 650												43 760	1.1					2 724 089	21.7		29.9	
650 - < 700										30 440	2.2							391 544	6.5		10.4	
700 - < 750										30 420	2.2							95 040	1.6		7.5	
750 - < 800																		100 096	0.8		1.3	
800 - < 850																		185 151	1.5		1.6	
850 - < 900																		39 098	0.3		1.9	
900 - < 950																					0.0	
950 - < 1000																		33 530	0.3		0.6	
> 1000																					0.0	
TOTAL l			248 306	100.0	65 046	100.0	65 583	100.0	466 688	1 377 575	100.0	3 986 276	100.0	738 603	100.0	6 056 880	100.0	6 056 880	100.0	100.0	100.0	
AVE PRICE			490.27		701.48		490.27		538.42	548.66	538.42	538.42	538.42	582.66	498.95	498.95	498.95	498.95	522.60	517.21	547.53	
AVE PRICE			61 426	475.00	118 950	8.3	30 963	500.00	945 351	121 574	475.00	945 351	488.28	172 722	500.00	1 199 122	483.87	1 199 122	483.87	486.17	500.98	
150 - < 200										40 600	0.8	29 110	0.8					81 140	0.4		0.0	
200 - < 250			94 200	5.3	183 320	12.8	1 445 110	81.6		33 250	0.7	1 367 024	36.9					7 122 636	36.3		1.8	
250 - < 300			1 680 470	94.7	533 570	37.3	325 950	18.4		718 708	15.0	1 078 890	30.7					14 593 996	38.2		1.2	
300 - < 350					477 100	33.3	477 100	33.3		488 331	9.8	1 039 179	29.6					9 252 937	47.2		36.8	
350 - < 400					81 810	5.7				1 779 950	37.2	1 199 555	4.2					5 298 532	13.9		40.0	
400 - < 450					36 810	2.6				609 500	12.7	150 850	5.3					2 487 249	2.5		11.1	
450 - < 500										1 035 940	21.6	38 540	1.4					766 560	2.0		9.5	
500 - < 550																		1 074 480	2.8		0.7	
550 - < 600										19 600	0.4										0.4	
600 - < 650										77 280	1.6							77 280	0.2		0.1	
650 - < 700										2 280	0.0							2 280	0.0		0.0	
700 - < 750																					0.0	
TOTAL l			1 774 670	100.0	1 431 560	100.0	1 771 060	100.0	2 830 075	4 785 439	100.0	3 514 203	100.0	2 830 075	100.0	19 619 226	100.0	19 619 226	100.0	100.0	100.0	
AVE PRICE			250.62		288.94		278.32		418.87	418.87	418.87	418.87	418.87	330.19	313.40	313.40	313.40	313.40	320.95	323.17	317.27	
AVE PRICE							6 200	450.00	6 200	6 200	450.00	6 200	450.00	6 200	450.00	6 200	450.00	6 200	450.00	450.00	363.57	

TYPE	ORANGE RIVER		OLIFANTS RIVER		MALMESBURY		LITTLE KAROO		PAARL		ROBERTSON		STELLENBOSCH		WORCESTER		INDUSTRY 2008		INDUSTRY %		
	LITRES	%	LITRES	%	LITRES	%	LITRES	%	LITRES	%	LITRES	%	LITRES	%	LITRES	%	LITRES	%	2007	2006	
Colombar	150 - < 200								12 156	16.6	158 770	3.9			12 615	0.2		12 615	0.1	0.0	
	200 - < 250	273 180	7.6	24 020	1.0			486 040	33.7	9 750	13.3	1 538 333	37.6	651 110	100.0	3 091 419	40.1	468 126	2.3	1.6	
	250 - < 300	3 310 260	91.6	2 177 989	91.8			900 200	62.3	51 170	70.0	1 084 800	26.5			2 901 642	37.7	11 264 901	56.0	54.1	
	300 - < 350	30 800	0.9	169 640	7.2							873 940	21.3			1 320 718	17.1	5 138 252	25.5	31.7	
	350 - < 400					137 420	81.3	57 580	4.0			421 040	10.3			321 350	4.2	2 332 078	11.6	12.7	
	400 - < 450						0.0					18 340				56 200	0.7	799 970	4.0	0.0	
	450 - < 500					31 600	18.7											18 340	0.1	0.1	
	500 - < 550																	87 800	0.4	0.0	
	850 - < 900																			0.0	0.0
	TOTAL £	3 614 240	100.0	2 371 649	100.0	1 69 020	393.38	1 443 820	100.0	73 076	100.0	4 095 223	99.6	651 110	100.0	7 703 944	100.0	20 122 082	298.28	100.0	100.0
AVE PRICE	250.24		273.73				313.08		303.04		319.41		263.50		315.19		20 122 082	298.28	297.46	293.68	
Riesling	200 - < 250								14 744	3.2							14 744	1.2	0.0	0.0	
	250 - < 300								221 450	47.8	65 350	100.0	25 200	23.7	111 330	18.6	201 880	16.4	27.2	20.0	
	300 - < 350								210 640	45.5			48 350	45.5	291 950	48.7	561 750	45.5	54.5	56.4	
	350 - < 400								16 150	3.5			32 650	30.7	195 800	32.7	439 090	35.6	18.3	23.6	
	400 - < 450								462 984	100.0	65 350	100.0	106 200	100.0	599 060	100.0	1 233 614	100.0	100.0	100.0	
	TOTAL £								462 984	100.0	65 350	100.0	106 200	100.0	599 060	100.0	1 233 614	100.0	100.0	100.0	
	AVE PRICE								346.51		290.00		330.43		336.27		2 681 294	337.16	317.82	323.79	
	Semillon	150 - < 200																		0.4	0.0
		200 - < 250								24 300	15.8					91 480	4.0	91 480	3.4	0.8	0.1
		250 - < 300								45 600	29.7					212 466	9.3	236 766	8.8	14.8	13.8
300 - < 350									25 900	16.9			30 150	55.8	382 317	16.8	632 673	23.6	21.4	42.9	
350 - < 400									57 690	37.6			14 500	26.8	764 918	33.6	805 318	30.0	54.0	39.0	
400 - < 450											6 220	64.3			638 320	28.0	702 230	26.2	4.0	0.6	
450 - < 500											3 460	35.7			22 000	1.0	35 870	1.3	1.7	3.5	
500 - < 550															27 500	1.2	27 500	1.0	1.4	0.0	
550 - < 600													9 400	17.4	113 312	5.0	122 712	4.6	0.0	0.0	
600 - < 650															26 745	1.2	26 745	1.0	1.2	0.0	
650 - < 700																		0.1	0.0		
TOTAL £								153 490	100.0	9 680	100.0	54 050	100.0	2 279 058	100.0	2 681 294	100.0	100.0	100.0		
AVE PRICE								354.41		417.87		372.53		372.63		2 681 294	369.36	352.93	339.03		
Juice	100 - < 150																		110 387	339.03	
	150 - < 200	322 310	7.3	932 384	2.0	50 171	1.4	168 280	7.5	3 650	0.1	331 700	2.4	83 960	3.8	741 290	2.5	134 131	0.1	0.0	
	200 - < 250	872 900	19.7	7 720 320	16.8	1 153 315	3.2	199 075	8.8	1 800 331	37.9	1 950 255	14.2	424 270	19.1	8 090 501	27.4	3 039 199	2.9	2.1	
	250 - < 300	825 100	18.6	32 254 434	70.0	1 808 805	50.6	1 867 290	82.8	384 424	8.1	7 506 391	54.5	488 610	22.0	8 090 501	27.4	22 980 797	21.5	12.9	
	300 - < 350	1 472 840	33.2	5 116 568	11.1	1 428 603	40.0	1 867 290	82.8	2 051 270	43.2	1 743 358	12.7	862 389	38.9	13 492 288	45.7	58 620 899	55.0	68.1	
	350 - < 400	939 480	21.2			132 313	3.7	19 350	0.9	2 051 270	43.2	1 743 358	12.7	248 648	11.2	4 842 287	16.4	15 626 614	14.7	8.2	
	400 - < 450					1 760	0.0			103 641	2.2	294 863	2.1	54 860	2.5	1 261 343	4.3	2 665 947	2.5	5.1	
	450 - < 500					12 940	0.4			89 090	1.9	1 330 349	9.7	11 000	0.5	298 539	1.0	1 751 125	1.6	2.3	
	500 - < 550					15 940	0.4			36 800	0.8	60 520	0.4			13 600	0.0	128 605	0.1	0.5	
	550 - < 600									223 492	4.7	360 203	2.6			614 878	2.1	1 214 513	1.1	0.5	
600 - < 650									5 250	0.1	36 220	0.3	14 946	0.7	100 959	0.3	157 375	0.1	0.1		
650 - < 700									33 560	0.7	121 596	0.9			41 820	0.1	196 976	0.2	0.2		
700 - < 750									20 440	0.4			20 120	0.9			28 540	0.0	0.0		
850 - < 900					2 500	0.1					40 301	0.3					20 440	0.0	0.0		
900 - < 950					3 075	0.1							4 180	0.2			42 801	0.0	0.0		
> 1000													3 600	0.2			7 255	0.0	0.0		
TOTAL £	4 432 630	100.0	46 059 018	100.0	3 571 422	100.0	2 253 995	100.0	4 751 948	100.0	13 775 756	100.0	2 215 583	100.0	29 497 465	100.0	106 558 817	100.0	100.0	100.0	
AVE PRICE	283.63		261.30		29 907	320.00	243.86		268 929	403.56	295.66		248.50		272.69		106 558 817	269.90	275.02	274.39	
AVE PRICE									288 929	403.56	295.66		248.50		272.69		106 558 817	269.90	275.02	274.39	
Juice									268 929	403.56	295.66		248.50		272.69		106 558 817	269.90	275.02	274.39	
Juice									268 929	403.56	295.66		248.50		272.69		106 558 817	269.90	275.02	274.39	
Juice									268 929	403.56	295.66		248.50		272.69		106 558 817	269.90	275.02	274.39	
Juice									268 929	403.56	295.66		248.50		272.69		106 558 817	269.90	275.02	274.39	
Juice									268 929	403.56	295.66		248.50		272.69		106 558 817	269.90	275.02	274.39	
Juice									268 929	403.56	295.66		248.50		272.69		106 558 817	269.90	275.02	274.39	
Juice									268 929	403.56	295.66		248.50		272.69		106 558 817	269.90	275.02	274.39	
Juice									268 929	403.56	295.66		248.50		272.69		106 558 817	269.90	275.02	274.39	
Juice									268 929	403.56	295.66		248.50		272.69		106 558 817	269.90	275.02	274.39	
Juice									268 929	403.56	295.66		248.50		272.69		106 558 817	269.90	275.02	274.39	
Juice									268 929	403.56	295.66		248.50		272.69		106 558 817	269.90	275.02	274.39	
Juice									268 929	403.56	295.66		248.50		272.69		106 558 817	269.90	275.02	274.39	
Juice									268 929	403.56	295.66		248.50		272.69		106 558 817	269.90	275.02	274.39	
Juice									268 929	403.56	295.66		248.50		272.69		106 558 817	269.90	275.02	274.39	
Juice									268 929	403.56	295.66		248.50		272.69		106 558 817	269.90	275.02	274.39	
Juice									268 929	403.56	295.66		248.50		27						



# AVERAGE PRICES OF WINE SOLD IN BULK ACCORDING TO VINTAGE

TYPE	PRICE RANGE R / HL OR C / l	2005			2006			2007			JAN - JUL 2008			INDUSTRY GROWTH		
		2005 VINTAGE	OTHER VINTAGES	TOTAL	2006 VINTAGE	OTHER VINTAGES	TOTAL	2007 VINTAGE	OTHER VINTAGES	TOTAL	2008 VINTAGE	OTHER VINTAGES	TOTAL	2005 - 2006	2006 - 2007	2007 - 2008
Cabernet Sauvignon	LITRES	4 171 545	7 240 107	11 411 652	4 031 268	8 763 430	12 794 698	7 745 967	11 773 450	19 519 417	1 633 199	8 444 150	10 077 349	12.12	52.96	-48.37
	AVE PRICER / HL OR C / l	515.94	580.85	557.12	461.49	483.00	476.23	417.49	414.02	415.40	385.23	427.63	420.75	-14.52	-12.77	1.29
Cabernet Franc	LITRES	174 103	169 733	343 836	95 670	271 978	367 648	275 262	209 266	484 528	153 950	260 583	414 533	6.93	31.79	-14.45
	AVE PRICER / HL OR C / l	426.05	342.73	384.92	389.71	421.64	408.12	456.03	411.36	436.73	413.71	350.97	374.27	6.03	7.01	-14.30
Ruby Cabernet	LITRES	2 938 759	4 717 838	7 656 597	1 601 831	4 987 484	6 589 315	2 065 812	3 814 518	5 680 330	1 168 491	2 987 775	4 156 266	-13.94	-10.76	-29.32
	AVE PRICER / HL OR C / l	364.86	440.47	411.45	319.77	417.00	393.36	281.65	314.30	302.83	339.02	333.41	334.98	-4.40	-23.01	10.62
Merlot	LITRES	4 061 067	7 440 764	11 501 831	3 501 475	5 395 154	8 896 629	4 775 152	7 574 527	12 349 679	1 223 863	7 033 707	8 257 570	-22.65	38.81	-33.14
	AVE PRICER / HL OR C / l	440.36	488.24	471.33	349.77	456.47	426.29	392.80	399.13	396.68	368.50	415.17	408.25	-9.56	-6.95	2.92
Shiraz	LITRES	4 551 037	7 197 807	11 748 844	5 742 215	8 595 511	14 337 726	8 454 908	11 481 854	19 936 762	2 295 045	10 183 980	12 479 025	22.04	39.05	-37.41
	AVE PRICER / HL OR C / l	465.10	588.12	548.21	521.99	508.28	514.37	446.09	466.97	458.12	447.68	431.11	434.16	-6.17	-10.94	-5.23
Pinotage	LITRES	7 314 746	9 333 874	16 648 620	6 137 551	8 638 914	14 776 465	5 254 275	7 606 814	12 861 089	1 687 798	6 955 564	8 643 362	-11.25	-12.96	-32.79
	AVE PRICER / HL OR C / l	411.37	469.09	443.73	378.24	403.28	392.88	391.10	400.54	396.68	395.61	408.49	405.97	-11.46	0.97	2.34
Pinot Noir	LITRES	25 230	26 144	51 464	40 111	3 000	43 111	18 318	52 540	70 858		5 400	5 400	-16.23	64.36	-92.38
	AVE PRICER / HL OR C / l	605.27	697.57	652.16	425.72	350.00	420.45	674.63	672.62	673.14	672.62	325.00	325.00	-35.53	60.10	-51.72
Cinsaut	LITRES	2 052 245	6 300 459	8 352 704	1 595 822	4 654 706	6 250 528	1 804 453	2 779 117	4 583 570	288 813	3 485 590	3 774 403	-25.17	-26.67	-17.65
	AVE PRICER / HL OR C / l	343.15	413.97	396.57	301.27	366.04	349.50	325.51	312.17	317.42	250.04	311.22	306.53	-11.87	-9.18	-3.43
Rosé and Blanc de Noir	LITRES	9 631 834	2 520 050	12 151 884	11 706 756	2 172 220	13 878 976	13 612 799	4 101 376	17 714 175	9 722 669	5 575 066	15 297 735	14.21	27.63	-13.64
	AVE PRICER / HL OR C / l	307.26	297.87	305.31	304.57	305.27	304.68	293.09	310.52	297.13	324.21	289.29	311.48	-0.21	-2.48	4.83
Other red and blends	LITRES	11 802 024	21 869 359	33 671 383	9 691 510	21 036 945	30 728 455	14 588 097	27 390 994	41 979 091	7 545 535	25 298 048	32 843 583	-8.74	36.61	-21.76
	AVE PRICER / HL OR C / l	371.20	442.82	417.72	372.51	393.17	386.66	343.65	352.84	349.64	362.91	327.50	335.64	-7.44	-9.57	-4.00
Chardonnay	LITRES	12 306 058	5 777 779	18 083 837	12 481 165	5 219 171	17 700 336	13 393 606	5 085 455	18 479 081	9 295 042	6 001 370	15 296 412	-2.12	4.40	-17.22
	AVE PRICER / HL OR C / l	502.92	475.67	494.22	499.87	483.72	495.11	473.19	460.83	474.14	474.78	485.43	478.96	0.18	-4.24	1.02
Sauvignon Blanc	LITRES	12 697 870	1 490 984	14 188 854	8 320 457	1 698 065	10 018 522	12 055 148	1 919 885	13 975 033	9 659 946	2 878 923	12 538 269	-29.39	39.49	-10.28
	AVE PRICER / HL OR C / l	526.78	482.31	522.11	549.52	537.80	547.53	522.46	484.21	517.21	531.17	493.86	522.60	4.87	-5.54	1.04
Chenin Blanc	LITRES	46 295 843	12 621 189	58 917 032	44 764 301	7 438 344	52 202 645	46 226 759	15 293 149	61 519 908	22 881 428	15 356 721	38 238 149	-11.40	17.85	-37.84
	AVE PRICER / HL OR C / l	309.13	287.16	304.43	319.37	304.63	317.27	324.41	319.44	323.17	333.31	302.54	320.95	4.22	1.86	-0.69
Colombar	LITRES	22 060 334	9 242 084	31 302 418	21 930 407	4 217 001	26 147 408	21 304 755	6 576 815	27 881 570	8 631 979	11 490 103	20 122 082	-16.47	6.63	-27.83
	AVE PRICER / HL OR C / l	283.51	263.84	277.70	291.36	305.73	293.68	293.53	303.69	297.46	304.74	293.43	298.28	5.75	1.29	0.28
Riesling	LITRES	2 448 590	543 483	2 992 073	2 493 996	136 950	2 630 946	2 683 039	1 032 640	3 715 679	644 064	589 550	1 233 614	-12.07	41.23	-66.80
	AVE PRICER / HL OR C / l	323.25	267.49	313.12	321.25	370.00	323.79	315.28	324.42	317.82	338.54	335.65	337.16	3.41	-1.84	6.09
Semillon	LITRES	3 069 433	719 240	3 788 673	2 776 518	727 474	3 503 992	3 082 645	592 898	3 675 543	1 881 986	999 308	2 681 294	-7.51	4.90	-27.05
	AVE PRICER / HL OR C / l	335.67	319.71	332.64	342.15	327.13	339.03	354.82	343.09	352.93	378.24	354.42	369.36	1.92	4.10	4.66
Other white and blends	LITRES	108 780 776	48 200 003	156 980 779	129 676 318	27 875 670	157 551 988	103 032 977	49 551 160	152 584 137	47 068 172	59 490 645	106 558 817	0.36	-3.15	-30.16
	AVE PRICER / HL OR C / l	262.10	238.48	254.85	276.48	264.65	274.39	278.07	268.68	275.02	282.19	260.17	269.90	7.67	0.23	-1.86
Fortified	LITRES	8 009 417	1 275 209	9 284 626	10 148 330	1 147 268	11 295 598	11 090 083	610 595	11 700 678	2 244 718	2 102 471	4 347 189	21.66	3.59	-62.85
	AVE PRICER / HL OR C / l	345.36	356.47	346.88	355.13	349.73	345.58	371.28	372.99	371.37	381.89	369.53	375.43	2.22	4.74	1.09
All Varieties	LITRES	262 391 001	146 686 106	409 077 107	276 735 701	112 979 285	389 714 986	271 464 055	157 447 053	428 911 108	127 826 088	169 138 954	296 965 052	-4.73	10.06	-30.76
	AVE PRICER / HL OR C / l	323.59	364.74	338.35	323.18	375.74	338.42	331.40	340.96	334.87	324.16	325.13	333.32	0.02	-1.05	-0.46
All red varieties	LITRES	46 709 860	66 788 604	113 498 464	44 127 869	64 519 342	108 647 211	58 459 222	76 451 962	134 911 184	15 657 458	65 219 928	80 877 366	-4.27	24.17	-40.05
	AVE PRICER / HL OR C / l	393.01	473.70	440.49	378.96	424.53	406.02	362.62	383.43	374.41	344.29	364.17	365.12	-7.83	-7.79	-2.48
All white varieties	LITRES	207 671 724	78 622 293	286 294 017	222 459 502	47 312 675	269 772 177	201 914 750	80 394 496	282 299 246	71 219 927	94 360 767	165 571 694	-5.77	4.64	-41.35
	AVE PRICER / HL OR C / l	307.14	272.31	297.57	310.66	309.83	310.51	320.17	300.13	314.46	350.80	293.48	316.88	4.35	1.27	0.77

# RSA EXPORTS: WINE AND FLAVOURED GRAPE LIQUOR

PRODUCT		AUGUST			6 MONTHS			12 MONTHS			Litres
		2007	2008	Trend	MAR '07 - AUG '07	MAR '08 - AUG '08	Trend	SEP '06 - AUG '07	SEP '07 - AUG '08	Trend	
Chardonnay	P	1 357 085	1 445 019	106.48	8 151 970	9 629 044	118.12	15 479 506	17 982 576	116.17	
	B	186 080	632 610	339.97	2 060 439	4 050 298	196.57	3 894 626	9 195 954	236.12	
Sauvignon Blanc	P	1 191 359	1 639 217	137.59	7 172 278	8 533 606	118.98	12 837 381	14 741 035	114.83	
	B	317 705	295 640	93.05	1 554 239	2 138 970	137.62	2 640 678	3 812 003	144.36	
Chenin Blanc	P	1 426 619	1 829 274	128.22	9 680 754	10 215 837	105.53	15 967 002	17 852 124	111.81	
	B	1 380 992	1 536 309	111.25	10 673 995	12 136 790	113.70	20 325 563	23 330 428	114.78	
Other White	P	2 499 414	3 418 032	136.75	17 068 762	21 621 739	126.67	32 418 766	36 144 105	111.49	
	B	2 071 243	5 346 821	258.15	9 493 616	22 279 226	234.68	15 178 628	34 503 273	227.31	
<b>TOTALS WHITE WINE</b>	P	<b>6 474 477</b>	<b>8 331 542</b>	<b>128.68</b>	<b>42 073 764</b>	<b>50 000 226</b>	<b>118.84</b>	<b>76 702 655</b>	<b>86 719 840</b>	<b>113.06</b>	
	B	<b>3 956 020</b>	<b>7 811 380</b>	<b>197.46</b>	<b>23 782 289</b>	<b>40 605 284</b>	<b>170.74</b>	<b>42 039 495</b>	<b>70 841 658</b>	<b>168.51</b>	
	P+B	<b>10 430 497</b>	<b>16 142 922</b>	<b>154.77</b>	<b>65 856 053</b>	<b>90 605 510</b>	<b>137.58</b>	<b>118 742 150</b>	<b>157 561 498</b>	<b>132.69</b>	
Cabernet Sauvignon	P	1 097 430	1 140 837	103.96	6 084 617	6 857 876	112.71	12 553 640	13 636 347	108.62	
	B	122 920	864 369	703.20	2 691 046	3 240 277	120.41	4 598 822	6 562 836	142.71	
Shiraz	P	1 247 602	1 255 624	100.64	6 940 443	9 203 253	132.60	13 985 108	16 684 320	119.30	
	B	169 257	145 050	85.70	655 152	1 493 310	227.93	1 142 692	4 187 111	366.43	
Pinotage	P	495 273	837 527	169.10	4 156 220	5 259 974	126.56	8 287 366	9 427 944	113.76	
	B	509 554	672 372	131.95	3 934 677	4 023 436	102.26	7 959 269	7 996 682	100.47	
Merlot	P	530 509	648 318	122.21	3 416 746	3 941 796	115.37	6 878 450	7 837 094	113.94	
	B	62 610	24 280	38.78	771 258	1 409 441	182.75	1 714 791	3 180 736	185.49	
Other Red	P	4 237 707	5 462 652	128.91	28 901 715	33 668 841	116.49	56 467 825	64 068 765	113.46	
	B	2 891 403	5 247 960	181.50	17 903 012	28 071 039	156.80	35 208 773	60 316 834	171.31	
<b>TOTALS RED WINE</b>	P	<b>7 608 521</b>	<b>9 344 958</b>	<b>122.82</b>	<b>49 499 741</b>	<b>58 931 740</b>	<b>119.05</b>	<b>98 172 389</b>	<b>111 654 470</b>	<b>113.73</b>	
	B	<b>3 755 744</b>	<b>6 954 031</b>	<b>185.16</b>	<b>25 955 145</b>	<b>38 237 503</b>	<b>147.32</b>	<b>50 624 347</b>	<b>82 244 199</b>	<b>162.46</b>	
	P+B	<b>11 364 265</b>	<b>16 298 989</b>	<b>143.42</b>	<b>75 454 886</b>	<b>97 169 243</b>	<b>128.78</b>	<b>148 796 736</b>	<b>193 898 669</b>	<b>130.31</b>	
Blanc de Noir + Rosé	P	810 196	932 051	115.04	5 616 613	8 634 853	153.74	7 938 102	12 210 984	153.83	
	B	556 100	743 037	133.62	7 371 678	7 718 675	104.71	9 078 106	10 237 925	112.78	
	P+B	1 366 296	1 675 088	122.60	12 988 291	16 353 528	125.91	17 016 208	22 448 909	131.93	
<b>TOTALS NATURAL WINE</b>	P	<b>14 893 194</b>	<b>18 608 551</b>	<b>124.95</b>	<b>97 190 118</b>	<b>117 566 819</b>	<b>120.97</b>	<b>182 813 146</b>	<b>210 585 294</b>	<b>115.19</b>	
	B	<b>8 267 864</b>	<b>15 508 448</b>	<b>187.58</b>	<b>57 109 112</b>	<b>86 561 462</b>	<b>151.57</b>	<b>101 741 948</b>	<b>163 323 782</b>	<b>160.53</b>	
	P+B	<b>23 161 058</b>	<b>34 116 999</b>	<b>147.30</b>	<b>154 299 230</b>	<b>204 128 281</b>	<b>132.29</b>	<b>284 555 094</b>	<b>373 909 076</b>	<b>131.40</b>	
Fortified Wine	P	21 323	21 737	101.94	146 467	130 042	88.79	448 474	334 006	74.48	
	B	0	0	-	0	0	-	9 800	23 876	243.63	
	P+B	21 323	21 737	101.94	146 467	130 042	88.79	458 274	357 882	78.09	
Sparkling wine	P	196 003	298 506	152.30	1 223 615	1 929 673	157.70	2 513 510	3 514 377	139.82	
<b>TOTALS ALL WINE</b>	P	<b>15 110 520</b>	<b>18 928 794</b>	<b>125.27</b>	<b>98 560 200</b>	<b>119 626 534</b>	<b>121.37</b>	<b>185 775 130</b>	<b>214 433 677</b>	<b>115.43</b>	
	B	<b>8 267 864</b>	<b>15 508 448</b>	<b>187.58</b>	<b>57 109 112</b>	<b>86 561 462</b>	<b>151.57</b>	<b>101 751 748</b>	<b>163 347 658</b>	<b>160.54</b>	
	P+B	<b>23 378 384</b>	<b>34 437 242</b>	<b>147.30</b>	<b>155 669 312</b>	<b>206 187 996</b>	<b>132.45</b>	<b>287 526 878</b>	<b>377 781 335</b>	<b>131.39</b>	
OTHER(e.g. for vinegar, industrial)	P	0	0	-	0	0	-	0	0	-	
	B	0	192 964	-	0	743 580	-	0	1 344 211	-	
	P+B	0	192 964	-	0	743 580	-	0	1 344 211	-	
Flavoured Grape Liquor	P	0	0	-	462	15 054	3258.44	12 775	15 522	121.50	
<b>TOTALS ALL PRODUCTS</b>	P	<b>15 110 520</b>	<b>18 928 794</b>	<b>125.27</b>	<b>98 560 662</b>	<b>119 641 588</b>	<b>121.39</b>	<b>185 787 905</b>	<b>214 449 199</b>	<b>115.43</b>	
	B	<b>8 267 864</b>	<b>15 701 412</b>	<b>189.91</b>	<b>57 109 112</b>	<b>87 305 042</b>	<b>152.87</b>	<b>101 751 748</b>	<b>164 691 869</b>	<b>161.86</b>	
	P+B	<b>23 378 384</b>	<b>34 630 206</b>	<b>148.13</b>	<b>155 669 774</b>	<b>206 946 630</b>	<b>132.94</b>	<b>287 539 653</b>	<b>379 141 068</b>	<b>131.86</b>	

P=Packaged

SOURCE: DEPARTMENT OF AGRICULTURE, DIRECTORATE FOOD SAFETY AND QUALITY ASSURANCE

B=Bulk

# RSA NATURAL WINE EXPORTS PER COUNTRY (PACKAGED AND BULK)

## PACKAGED AND BULK NATURAL WINE EXPORTS (LITRES) PER COUNTRY FOR THE PERIOD SEPTEMBER - AUGUST

COUNTRY	200609 - 200708				200709 - 200808				TREND 200709 - 200808 / 200609 - 200708			
	WHITE	RED	BLANC DE NOIR / ROSÉ	TOTAL	WHITE	RED	BLANC DE NOIR / ROSÉ	TOTAL	WHITE	RED	BLANC DE NOIR / ROSÉ	TOTAL
UNITED KINGDOM	44 510 276	35 619 154	3 996 482	84 125 912	48 850 224	43 248 900	8 937 433	101 036 557	110	121	224	120
GERMANY	15 642 875	30 093 833	4 927 214	50 663 922	21 672 560	36 983 929	5 300 931	63 957 420	139	123	108	126
THE NETHERLANDS	10 473 823	15 273 516	4 915 340	30 662 679	10 812 477	14 547 142	4 138 366	29 497 985	103	95	84	96
SWEDEN	10 250 969	14 143 558	63 077	24 457 604	11 643 811	14 954 082	211 782	26 809 675	114	106	336	110
ANGOLA *	135 353	2 287 765	9 000	2 432 118	329 569	18 422 100	368 990	19 120 059	243	805	4 093	786
DENMARK	3 288 417	9 324 327	88 975	12 701 719	3 474 227	11 569 370	209 431	15 253 028	106	124	235	120
CANADA	4 252 670	7 989 520	51 359	12 293 549	6 614 214	8 144 000	108 163	14 866 377	156	102	211	121
U.S.A.	4 701 030	6 184 912	184 040	11 069 982	9 011 871	5 241 492	200 880	14 454 243	192	85	109	131
RUSSIA	1 054 920	1 474 530	5 945	2 535 395	9 492 438	1 855 288	159 596	11 507 322	900	126	2 685	454
NEW ZEALAND	1 787 611	861 952	1 890	2 651 453	6 025 264	4 534 270	13 590	10 573 124	337	526	719	399
BELGIUM	4 795 003	4 188 448	678 612	9 662 063	4 622 857	3 633 499	433 825	8 690 181	96	87	64	90
FRANCE	3 280 446	3 755 728	986 034	8 022 208	2 177 130	4 266 703	893 795	7 337 628	66	114	91	91
SWITZERLAND	1 754 143	1 482 943	429 687	3 646 773	3 005 416	1 825 496	436 199	5 267 111	171	125	102	144
AUSTRALIA	193 584	139 005	11 664	344 253	3 426 583	1 693 842	22 523	5 142 948	1 770	1 219	193	1 494
REPUBLIC OF IRELAND	2 403 062	2 008 829	55 834	4 467 725	2 647 345	2 402 621	82 931	5 132 897	110	120	149	115
FINLAND	2 364 416	1 543 296	383	3 908 095	2 603 821	2 425 983	31 167	5 060 971	110	157	8 138	129
CHINA	137 837	861 726	3 915	1 003 478	185 667	3 145 699	7 016	3 338 382	135	365	179	333
KENYA	797 777	912 625	17 127	1 727 529	965 587	1 099 347	16 259	2 081 193	121	120	95	120
NORWAY	225 073	1 256 403	1 124	1 482 600	252 774	1 491 341	3 002	1 747 117	112	119	267	118
NIGERIA *	133 262	830 879	4 253	968 394	205 667	1 387 817	16 203	1 609 687	154	167	381	166
JAPAN	516 389	837 666	0	1 354 055	591 542	993 165	7 466	1 592 173	115	119	0	118
TANZANIA	651 075	441 559	9 482	1 102 116	778 203	601 431	21 300	1 400 934	120	136	225	127
UNITED ARAB EMIRATES	399 490	383 392	17 669	800 551	631 479	641 051	29 634	1 302 164	158	167	168	163
POLAND	158 247	507 173	24 188	689 608	257 776	882 241	38 196	1 178 213	163	174	158	171
MAURITIUS *	567 974	379 002	174 716	1 121 692	499 142	436 205	198 540	1 133 887	88	115	114	101
LATVIA	445 186	705 271	3 375	1 153 832	133 722	267 144	4 050	404 916	30	38	120	35
OTHER COUNTRIES	3 821 242	5 329 724	354 823	9 505 789	6 650 132	7 204 511	558 241	14 412 884	174	135	157	152
<b>TOTAL</b>	<b>118 742 150</b>	<b>148 796 736</b>	<b>17 016 208</b>	<b>284 555 094</b>	<b>157 561 498</b>	<b>193 898 669</b>	<b>22 448 909</b>	<b>373 909 076</b>	<b>133</b>	<b>130</b>	<b>132</b>	<b>131</b>

## PACKAGED NATURAL WINE EXPORTS (LITRES) PER COUNTRY FOR THE PERIOD SEPTEMBER - AUGUST

COUNTRY	200609 - 200708				200709 - 200808				TREND 200709 - 200808 / 200609 - 200708			
	WHITE	RED	BLANC DE NOIR / ROSÉ	TOTAL	WHITE	RED	BLANC DE NOIR / ROSÉ	TOTAL	WHITE	RED	BLANC DE NOIR / ROSÉ	TOTAL
UNITED KINGDOM	30 661 312	28 394 579	3 420 721	62 476 612	36 565 465	35 840 971	7 367 213	79 773 649	119	126	215	128
SWEDEN	10 250 969	14 119 438	63 077	24 433 484	11 643 811	14 594 062	211 782	26 449 655	114	103	336	108
THE NETHERLANDS	7 293 979	9 396 307	2 407 828	19 098 114	7 732 225	9 666 432	2 438 283	19 836 940	106	103	101	104
GERMANY	3 851 879	9 912 825	766 538	14 531 242	4 217 128	10 106 080	793 962	15 117 170	109	102	104	104
DENMARK	2 413 307	7 085 770	76 995	9 576 072	2 512 367	8 392 164	113 332	11 017 863	104	118	147	115
U.S.A.	4 317 150	5 703 082	184 040	10 204 272	3 998 168	4 735 062	200 880	8 934 110	93	83	109	88
CANADA	2 668 239	4 425 680	51 359	7 145 278	2 524 626	4 943 114	84 013	7 551 753	95	112	164	106
BELGIUM	2 352 464	2 313 728	261 872	4 928 064	2 456 549	2 105 269	191 005	4 752 823	104	91	73	96
REPUBLIC OF IRELAND	2 379 332	2 008 829	55 834	4 443 995	2 324 125	1 929 173	82 931	4 336 229	98	96	149	98
FINLAND	1 797 066	1 422 556	383	3 220 005	2 179 141	2 016 723	6 917	4 202 781	121	142	1 806	131
NEW ZEALAND	59 471	136 152	1 890	197 513	888 584	1 206 170	13 590	2 108 344	1 494	886	719	1 067
KENYA	797 777	912 625	17 127	1 727 529	955 647	1 088 467	16 259	2 060 373	120	119	95	119
AUSTRALIA	146 134	139 005	11 664	296 809	941 796	829 822	22 523	1 794 141	644	597	193	604
NIGERIA *	133 262	830 879	4 253	968 394	205 667	1 387 817	16 203	1 609 687	154	167	381	166
JAPAN	382 709	837 666	0	1 220 375	416 702	993 165	7 466	1 417 333	109	119	0	116
TANZANIA	651 075	441 559	9 482	1 102 116	778 203	601 431	21 300	1 400 934	120	136	225	127
NORWAY	225 073	1 011 255	1 124	1 237 452	204 738	1 181 347	3 002	1 389 087	91	117	267	112
RUSSIA	695 637	1 066 616	5 945	1 768 198	549 271	821 582	12 096	1 382 949	79	77	203	78
UNITED ARAB EMIRATES	399 490	383 392	17 669	800 551	631 479	641 051	29 634	1 302 164	158	167	168	163
SWITZERLAND	653 732	713 893	117 927	1 485 552	390 227	608 650	47 169	1 046 046	60	85	40	70
POLAND	158 247	411 304	24 188	593 739	257 776	666 782	38 196	962 754	163	162	158	162
CHINA	113 837	460 706	3 915	578 458	161 727	743 783	7 016	912 526	142	161	179	158
FRANCE	239 525	243 090	26 757	509 372	247 509	354 432	35 231	637 172	103	146	132	125
MAURITIUS *	285 539	206 072	88 716	580 327	279 817	215 902	97 636	593 355	98	105	110	102
LATVIA	445 186	705 271	3 375	1 153 832	133 722	267 144	4 050	404 916	30	38	120	35
OTHER COUNTRIES	3 330 264	4 890 111	315 423	8 535 798	3 523 370	5 717 875	349 295	9 590 540	106	117	111	112
<b>TOTAL</b>	<b>76 702 655</b>	<b>98 172 390</b>	<b>7 938 102</b>	<b>182 813 147</b>	<b>86 719 840</b>	<b>111 654 470</b>	<b>12 210 984</b>	<b>210 585 294</b>	<b>113</b>	<b>114</b>	<b>154</b>	<b>115</b>

## BULK NATURAL WINE EXPORTS (LITRES) PER COUNTRY FOR THE PERIOD SEPTEMBER - AUGUST

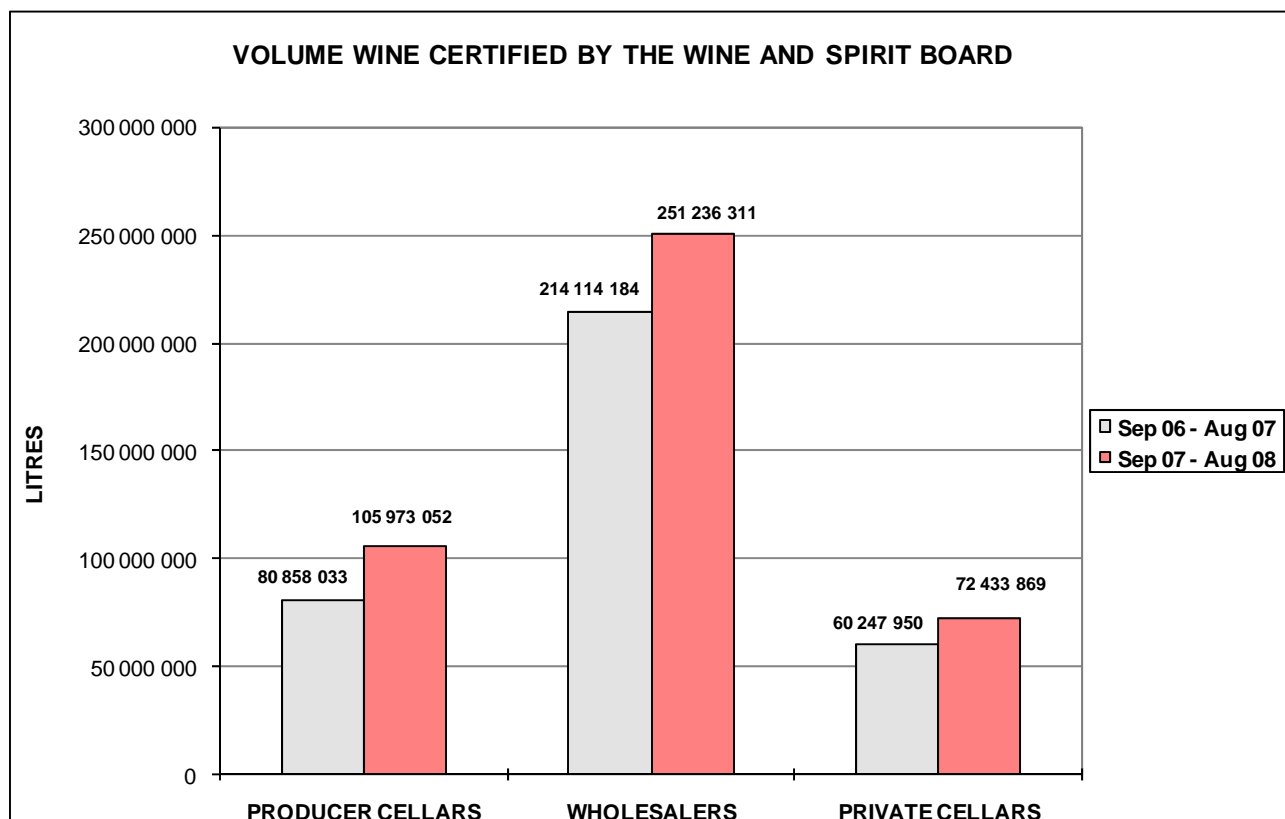
COUNTRY	200609 - 200708				200709 - 200808				TREND 200709 - 200808 / 200609 - 200708			
	WHITE	RED	BLANC DE NOIR / ROSÉ	TOTAL	WHITE	RED	BLANC DE NOIR / ROSÉ	TOTAL	WHITE	RED	BLANC DE NOIR / ROSÉ	TOTAL
GERMANY	11 790 996	20 181 008	4 160 676	36 132 680	17 455 432	26 877 849	4 506 969	48 840 250	148	133	108	135
UNITED KINGDOM	13 848 964	7 224 575	575 761	21 649 300	12 284 759	7 407 929	1 570 220	21 262 908	89	103	273	98
ANGOLA *	0	2 100 000	0	2 100 000	123 880	18 051 726	360 996	18 536 602	0	860	0	883
RUSSIA	359 283	407 914	0	767 197	8 943 168	1 033 706	147 500	10 124 374	2 489	253	0	1 320
THE NETHERLANDS	3 179 844	5 877 210	2 507 512	11 564 566	3 080 252	4 880 710	1 700 083	9 661 045	97	83	68	84
NEW ZEALAND	1 728 140	725 800	0	2 453 940	5 136 680	3 328 100	0	8 464 780	297	459	0	345
CANADA	1 584 431	3 563 840	0	5 148 271	4 089 588	3 200 886	24 150	7 314 624	258	90	0	142
FRANCE	3 040 921	3 512 638	959 277	7 512 836	1 929 621	3 912 271	858 564	6 700 456	63	111	90	89
U.S.A.	383 880	481 830	0	865 710	5 013 703	506 430	0	5 520 133	1 306	105	0	638
DENMARK	875 110	2 238 557	11 980	3 125 647	961 860	3 177 206	96 099	4 235 165	110	142	802	135
SWITZERLAND	1 100 411	749 050	311 760	2 161 221	2 615 189	1 216 846	389 030	4 221 065	238	162	125	195
BELGIUM	2 442 539	1 874 720	416 740	4 733 999	2 166 308	1 528 230	242 820	3 937 358	89	82	58	83
AUSTRALIA	47 450	0	0	47 450	2 484 787	864 020	0	3 348 807	5 237	0	0	7 058
CHINA	24 000	401 020	0	425 020	23 940	2 401 916	0	2 425 856	100	599	0	571
CZECH REPUBLIC	48 090	216 040	0	264 130	882 019	693 997	0	1 576 016	1 834	321	0	597
ITALY	336 861	96 700	48 400	481 961	554 981	554 199	48 140	1 157 320	165	573	99	240
FINLAND	567 350	120 740	0	688 090	424 680	409 260	24 250	858 190	75	339	0	125
INDIA	190 920	217 260	0	408 180	382 480	94 500	71 320	548 300	200	43	0	134
MAURITIUS	282 435	172 930	86 000	541 365	219 325	220 303	100 904	540 532	78	127	117	100
THAILAND	50 460	48 960	0	99 420	143 604	217 174	23 980	384 758	285	444	0	387
NORWAY	0	245 148	0	245 148	48 036	309 994	0	358 030	0	126	0	146
POLAND	0	95 869	0	95 869	0	215 459	0	215 459	0	225</		

# VOLUME OF WINE CERTIFIED (LITRES)

	1 MONTH			3 MONTHS			6 MONTHS			12 MONTHS		
	Aug-07	Aug-08	TREND	Jun-07 Aug-07	Jun-08 Aug-08	TREND	Mar-08 Aug-07	Mar-08 Aug-08	TREND	Sep-06 Aug-07	Sep-07 Aug-08	TREND
<b>PRODUCER CELLARS</b>												
Estate Wine	0	0		0	0		0	0		0	0	
Wine of Origin	5 034 278	5 419 796	108	14 176 440	18 646 490	132	26 671 276	31 821 296	119	48 356 210	70 541 383	146
Geographical Unit Wine	2 964 494	3 850 355	130	9 547 940	11 082 037	116	17 379 582	18 900 726	109	32 501 823	35 431 669	109
<b>SUB TOTAL</b>	<b>7 998 772</b>	<b>9 270 151</b>	<b>116</b>	<b>23 724 380</b>	<b>29 728 527</b>	<b>125</b>	<b>44 050 858</b>	<b>50 722 022</b>	<b>115</b>	<b>80 858 033</b>	<b>105 973 052</b>	<b>131</b>
<b>WHOLESALERS</b>												
Estate Wine	0	0		0	0		0	0		0	0	
Wine of Origin	3 578 322	4 467 663	125	9 546 873	13 740 653	144	16 532 039	25 571 824	155	30 835 959	41 783 341	136
Geographical Unit Wine	17 100 637	21 254 563	124	51 134 535	65 540 006	128	99 824 427	118 558 801	119	183 278 225	209 452 970	114
<b>SUB TOTAL</b>	<b>20 678 959</b>	<b>25 722 226</b>	<b>124</b>	<b>60 681 408</b>	<b>79 280 659</b>	<b>131</b>	<b>116 356 466</b>	<b>144 130 625</b>	<b>124</b>	<b>214 114 184</b>	<b>251 236 311</b>	<b>117</b>
<b>PRIVATE CELLARS</b>												
Estate Wine	921 097	656 014	71	2 382 832	2 334 187	98	4 069 623	4 305 388	106	7 896 437	7 709 554	98
Wine of Origin	4 069 034	3 827 695	94	10 008 616	11 393 096	114	18 215 528	20 281 510	111	35 199 945	38 491 825	109
Geographical Unit Wine	1 856 329	2 629 386	142	5 188 743	7 610 428	147	9 460 893	15 478 580	164	17 151 568	26 232 490	153
<b>SUB TOTAL</b>	<b>6 846 460</b>	<b>7 113 095</b>	<b>104</b>	<b>17 580 191</b>	<b>21 337 711</b>	<b>121</b>	<b>31 746 044</b>	<b>40 065 478</b>	<b>126</b>	<b>60 247 950</b>	<b>72 433 869</b>	<b>120</b>
<b>TOTAL</b>	<b>35 524 191</b>	<b>42 105 472</b>	<b>119</b>	<b>101 985 979</b>	<b>130 346 897</b>	<b>128</b>	<b>192 153 368</b>	<b>234 918 125</b>	<b>122</b>	<b>355 220 167</b>	<b>429 643 232</b>	<b>121</b>

<b>CERTIFIED BULK EXPORTS</b> (included in above figures)	1 MONTH			3 MONTHS			6 MONTHS			12 MONTHS		
	Aug-07	Aug-08	TREND	Jun-07 Aug-07	Jun-08 Aug-08	TREND	Mar-08 Aug-07	Mar-08 Aug-08	TREND	Sep-06 Aug-07	Sep-07 Aug-08	TREND
	<b>12 611 327</b>	<b>15 267 103</b>	<b>121</b>	<b>35 129 466</b>	<b>46 847 769</b>	<b>133</b>	<b>65 239 687</b>	<b>85 153 883</b>	<b>131</b>	<b>118 300 169</b>	<b>159 178 960</b>	<b>135</b>

\*The total volume of wine certified in the 2007 calendar year made up 51.5% of the 2007 wine production (46.6%-2006,52.9%-2005,44.1%-2004,38.5%-2003)



## INDUSTRY INFORMATION COMMITTEE MEMBERS

Andries van Tonder - SALBA  
 Diaan de Villiers - SALBA  
 Paiter Botha - VinpPo  
 Bowen Botha - WCSA  
 Marius Erasmus - WCSA  
 Elias Holtzkampf - SALBA

Francois Malan - CEWPA  
 Jaco Potgieter - SALBA  
 Jan Booysen - Winetech  
 Su Birch - WOSA  
 Chris Albertyn - KWV  
 Pierre Blake - OWB