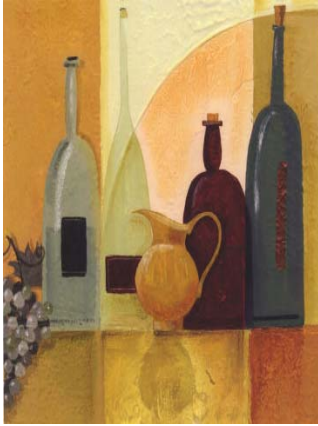


Wine Industry

I N F O R M A T I O N

September 2007



In this issue

- DOMESTIC SALES p2
- PRICE RANGES p3
- EXPORTS p6
- CERTIFICATION p8

2007 GRAPE PRICES AND 2008 TO 2012 PRODUCTION AND MARKET ESTIMATES

Together with the monthly publication, the 2007 grape prices as well as the 2008 to 2012 production and market forecasts have been published.

2007 grape prices highlights:

- Other red showed the biggest decrease of 19.1%.
- The varieties to show a drastic increase or decrease in 2007 were Cabernet Sauvignon (-11.8%), Cape Riesling (+17.3%), Roobernet (+56.7%), Clairette Blanc (+50.6%), Hanepoot White (+25.6%) and Pinot Gris (+55.9%).
- The grape prices decreased on average by 5.1% in 2007.

2008 to 2012 production and market forecasts highlights:

- The total export market (wine) is expected to increase by 8.3% in 2007 and by 8.5% in 2008, whereafter the growth rate will increase slightly to just under 10%.
- The demand for wine for brandy, distilling wine and grape juice concentrate and grape juice is expected to amount to 357,9 million gross litres in 2008 and increase to 403,2 million gross litres in 2012.
- If sales from the previous year should be brought into account, the industry will carry seven months worth of white wine stock in December 2007, which is estimated to decrease to 5 months in December 2008. With regards to red wine, the industry will carry 14 months worth of stock, which will increase to 15 months in 2008 and 2009, and then decrease to 10 months in 2012. If assumed that, in 2008, 10% of the wine for brandy and distilling wine need will also originate from red wine grapes, the stock level will remain constant at 14 months.

Also in this issue – domestic sales of natural wine during July 2007 (page 2), information regarding the price ranges in which wine were sold in bulk during July 2007 (pages 3 to 5), exports of wine and flavoured grape liquor during August 2007 (page 6), exports per country (page 7) and volume of wine certified during August 2007 (page 8).

SAWIS-greetings until October
Yvette and Natalie

A PUBLICATION OF:



FOR FURTHER ENQUIRIES CONTACT :

Natalie Davids
Tel: (021) 807 5719
Fax: (021) 807 6004

PO Box 238 Paarl, 7620
E-mail: natalie@sawis.co.za
Web page: www.sawis.co.za



SA WINE COUNCIL

DOMESTIC SALES AND EXPORTS OF NATURAL WINE

DOMESTIC SALES OF NATURAL WINE

GROSS LITRE

| | 1 MONTH | | 3 MONTHS | | | | 6 MONTHS | | | | 12 MONTHS | | | | MARKET SHARE | |
|---------------------------------|-------------------|-------------------|-------------------|-------------------|--------------------|--------------------|--------------------|--------------------|---------------|---------------|---------------|----------|----------|----------|--------------|----------|
| | JUL 2006 | JUL 2007 | MAY 2006 | MAY 2007 | FEB 2006 | FEB 2007 | AUG 2005 | AUG 2006 | AUG 2005 | AUG 2006 | AUG 2005 | AUG 2006 | AUG 2005 | AUG 2006 | AUG 2006 | JUL 2007 |
| | TREND | | TREND | | TREND | | TREND | | TREND | | TREND | | TREND | | | |
| Wholesalers | 11 892 106 | 13 592 659 | 37 437 805 | 40 851 204 | 76 504 416 | 81 597 696 | 161 862 222 | 169 029 451 | 106.66 | 104.43 | 54.90 | | | | | |
| Private Cellars | 2 404 118 | 2 746 774 | 7 424 924 | 9 012 442 | 15 362 773 | 17 332 748 | 31 634 472 | 35 030 748 | 112.82 | 110.74 | 11.38 | | | | | |
| Producer Cellars | 7 504 600 | 8 103 372 | 23 459 128 | 23 640 137 | 47 207 573 | 47 025 012 | 98 064 394 | 98 719 542 | 99.61 | 100.67 | 32.07 | | | | | |
| SUB TOTAL | 21 800 824 | 24 442 805 | 68 321 857 | 73 503 783 | 139 074 762 | 145 955 456 | 291 561 088 | 302 779 741 | 104.95 | 103.85 | 98.35 | | | | | |
| Wine component of alc fruit bev | 449 407 | 440 990 | 1 405 146 | 1 059 401 | 2 862 323 | 2 340 875 | 6 742 928 | 5 081 823 | 81.78 | 75.37 | 1.65 | | | | | |
| TOTAL | 22 250 231 | 24 883 795 | 69 727 003 | 74 563 184 | 141 937 085 | 148 296 331 | 298 304 016 | 307 861 564 | 104.48 | 103.20 | 100.00 | | | | | |

Included in these figures are the sales of locally bottled imported natural wine

EXPORT OF NATURAL WINE

GROSS LITRE

| | 1 MONTH | | 3 MONTHS | | | | 6 MONTHS | | | | 12 MONTHS | | | | MARKET SHARE | |
|--------------|-------------------|-------------------|-------------------|-------------------|--------------------|--------------------|--------------------|--------------------|---------------|---------------|---------------|----------|----------|----------|--------------|----------|
| | JUL 2006 | JUL 2007 | MAY 2006 | MAY 2007 | FEB 2006 | FEB 2007 | AUG 2005 | AUG 2006 | AUG 2005 | AUG 2006 | AUG 2005 | AUG 2006 | AUG 2005 | AUG 2006 | AUG 2006 | JUL 2007 |
| | TREND | | TREND | | TREND | | TREND | | TREND | | TREND | | TREND | | | |
| TOTAL | 23 776 238 | 29 620 327 | 77 975 611 | 88 750 703 | 139 182 962 | 152 403 288 | 272 649 304 | 285 450 402 | 109.50 | 104.70 | 100.00 | | | | | |

DOMESTIC SALES AND EXPORT OF NATURAL WINE

GROSS LITRE

| | 1 MONTH | | 3 MONTHS | | | | 6 MONTHS | | | | 12 MONTHS | | | | MARKET SHARE | |
|--------------|-------------------|-------------------|--------------------|--------------------|--------------------|--------------------|--------------------|--------------------|---------------|---------------|---------------|----------|----------|----------|--------------|----------|
| | JUL 2006 | JUL 2007 | MAY 2006 | MAY 2007 | FEB 2006 | FEB 2007 | AUG 2005 | AUG 2006 | AUG 2005 | AUG 2006 | AUG 2005 | AUG 2006 | AUG 2005 | AUG 2006 | AUG 2006 | JUL 2007 |
| | TREND | | TREND | | TREND | | TREND | | TREND | | TREND | | TREND | | | |
| TOTAL | 46 026 469 | 54 504 122 | 147 702 614 | 163 313 887 | 281 120 047 | 300 699 619 | 570 953 320 | 593 311 966 | 110.57 | 103.92 | 100.00 | | | | | |

SOURCE FOR EXPORT FIGURES: DEPARTMENT OF AGRICULTURE, DIRECTORATE FOOD SAFETY AND QUALITY ASSURANCE

PRICE RANGES IN WHICH WINE WERE SOLD IN BULK

| TYPE | PRICE RANGE R / HL OR C / £ | JULY 2006 | | JULY 2007 | | JAN - JULY 2007 | | JAN 06- DEC 06 | JAN 05- DEC 05 |
|----------------------------------|-----------------------------|----------------|------------------|------------------|-------------------|-------------------|----------------|----------------|----------------|
| | | LITRES | % | LITRES | % | LITRES | % | % | % |
| Cabernet Sauvignon | < 100 | | | | | 44 021 | 0.4 | | |
| | 100 - < 200 | | | | | 94 153 | 0.9 | 0.3 | 0.0 |
| | 200 - < 300 | | | 33 624 | 2.6 | 852 690 | 8.1 | 2.8 | 3.6 |
| | 300 - < 400 | 424 670 | 65.1 | 618 796 | 48.3 | 5 112 536 | 48.6 | 43.5 | 18.2 |
| | 400 - < 500 | 91 363 | 14.0 | 132 540 | 10.3 | 1 195 332 | 11.4 | 10.4 | 15.0 |
| | 500 - < 600 | 40 800 | 6.3 | 450 420 | 35.2 | 2 287 923 | 21.7 | 13.4 | 24.6 |
| | 600 - < 700 | 49 840 | 7.6 | 25 780 | 2.0 | 696 870 | 6.6 | 17.7 | 13.0 |
| | 700 - < 800 | | | | | 180 870 | 1.7 | 6.0 | 13.0 |
| | 800 - < 900 | 10 820 | 1.7 | 19 472 | 1.5 | 62 712 | 0.6 | 3.1 | 6.4 |
| | 900 - < 1000 | | | | | | | 0.8 | 3.5 |
| | > 1000 | | | | | | | 2.0 | 2.7 |
| TOTAL £ | | 652 693 | 100.0 | 1 280 632 | 100.0 | 10 527 107 | 100.0 | 100.0 | 100.0 |
| AVE PRICE R / HL OR C / £ | | | 390.30 | | 422.54 | | 410.10 | 476.23 | 557.12 |
| Cabernet Franc | 100 - < 200 | | | | | 10 000 | 4.2 | 1.20 | |
| | 200 - < 300 | | | | | 27 950 | 11.9 | 6.1 | 15.0 |
| | 300 - < 400 | | | 37 200 | 63.2 | 98 623 | 41.9 | 39.9 | 52.9 |
| | 400 - < 500 | | | 21 620 | 36.8 | 78 620 | 33.4 | 31.9 | 11.9 |
| | 500 - < 600 | | | | | | | 7.5 | |
| | 600 - < 700 | | | | | 20 200 | 8.6 | 5.3 | 15.1 |
| | 700 - < 800 | | | | | | | 8.1 | 5.1 |
| | TOTAL £ | | | | 58 820 | 100.0 | 235 393 | 100.0 | 100.0 |
| AVE PRICE R / HL OR C / £ | | | | | 366.16 | | 362.43 | 408.12 | 384.92 |
| Ruby Cabernet | 100 - < 200 | | | 72 180 | 17.4 | 239 760 | 7.3 | | |
| | 200 - < 300 | 217 150 | 43.0 | 150 417 | 36.3 | 954 927 | 29.0 | 24.9 | 21.3 |
| | 300 - < 400 | 26 300 | 5.2 | 132 720 | 32.1 | 1 176 185 | 35.7 | 24.6 | 26.8 |
| | 400 - < 500 | 223 518 | 44.2 | 58 733 | 14.2 | 842 942 | 25.6 | 23.8 | 17.3 |
| | 500 - < 600 | 38 455 | 7.6 | | | 55 120 | 1.7 | 24.6 | 27.4 |
| | 600 - < 700 | | | | | 26 300 | 0.8 | 1.2 | 6.9 |
| | 700 - < 800 | | | | | | | | 0.0 |
| | 900 - < 1000 | | | | | | | 0.8 | |
| | TOTAL £ | 505 423 | 100.0 | 414 050 | 100.0 | 3 295 234 | 100.0 | 100.0 | 100.0 |
| AVE PRICE R / HL OR C / £ | | 373.74 | | 282.41 | | 318.07 | 393.36 | 411.45 | |
| Merlot | < 100 | | | | | 16 000 | 0.2 | | |
| | 100 - < 200 | | | 970 | 0.1 | 293 733 | 4.5 | 4.08 | |
| | 200 - < 300 | 35 100 | 9.3 | | | 587 830 | 9.1 | 6.3 | 6.2 |
| | 300 - < 400 | 109 540 | 29.0 | 380 758 | 45.9 | 2 661 893 | 41.1 | 45.6 | 39.2 |
| | 400 - < 500 | 53 900 | 14.3 | 118 760 | 14.3 | 853 669 | 13.2 | 13.0 | 16.9 |
| | 500 - < 600 | 94 425 | 25.0 | 290 439 | 35.0 | 1 293 960 | 20.0 | 13.6 | 15.3 |
| | 600 - < 700 | 32 430 | 8.6 | | | 678 397 | 10.5 | 9.4 | 5.2 |
| | 700 - < 800 | 52 087 | 13.8 | 39 100 | 4.7 | 97 910 | 1.5 | 4.1 | 11.3 |
| | 800 - < 900 | | | | | | | 1.9 | 2.5 |
| | 900 - < 1000 | | | | | | | 2.0 | 2.8 |
| | > 1000 | | | | | | | 0.0 | 0.7 |
| TOTAL £ | 377 482 | 100.0 | 830 027 | 100.0 | 6 483 392 | 100.0 | 100.0 | 100.0 | |
| AVE PRICE R / HL OR C / £ | | 480.66 | | 430.74 | | 408.30 | 426.29 | 471.33 | |
| Shiraz | < 100 | | | | | 106 925 | 1.0 | 0.08 | |
| | 100 - < 200 | | | | | 1 604 962 | 14.9 | 5.6 | 2.4 |
| | 200 - < 300 | 142 400 | 24.0 | 82 150 | 5.6 | 2 502 042 | 23.2 | 30.0 | 28.0 |
| | 300 - < 400 | 86 248 | 14.5 | 224 565 | 15.4 | 1 915 864 | 17.8 | 18.1 | 21.3 |
| | 400 - < 500 | 124 760 | 21.0 | 163 460 | 11.2 | 2 588 093 | 24.0 | 15.5 | 12.0 |
| | 500 - < 600 | 20 512 | 3.5 | 613 771 | 42.0 | 1 226 949 | 11.4 | 13.0 | 9.9 |
| | 600 - < 700 | 115 991 | 19.5 | 197 846 | 13.5 | 19 100 | 0.2 | 6.3 | 11.3 |
| | 700 - < 800 | | | 9 580 | 0.7 | 620 694 | 5.8 | 7.5 | 10.0 |
| | 800 - < 900 | 75 369 | 12.7 | 15 020 | 1.0 | 4 371 | 0.0 | 1.4 | 2.0 |
| | 900 - < 1000 | 29 070 | 4.9 | | | 187 836 | 1.7 | 2.2 | 3.3 |
| | > 1000 | | | 156 436 | 10.7 | | | | |
| TOTAL £ | 594 350 | 100.0 | 1 462 828 | 100.0 | 10 776 836 | 100.0 | 100.0 | 100.0 | |
| AVE PRICE R / HL OR C / £ | | 493.48 | | 584.48 | | 472.43 | 514.37 | 548.21 | |
| Pinotage | 100 - < 200 | | | | | 318 721 | 4.1 | 2.3 | 1.0 |
| | 200 - < 300 | 43 120 | 4.3 | 24 531 | 4.0 | 4 153 880 | 54.0 | 49.8 | 48.0 |
| | 300 - < 400 | 645 077 | 64.9 | 397 115 | 64.2 | 2 279 614 | 29.7 | 35.7 | 24.8 |
| | 400 - < 500 | 275 600 | 27.7 | 157 995 | 25.5 | 777 359 | 10.1 | 7.5 | 11.3 |
| | 500 - < 600 | 13 442 | 1.4 | 4 772 | 0.8 | 142 586 | 1.9 | 3.4 | 9.5 |
| | 600 - < 700 | 14 180 | 1.4 | 27 850 | 4.5 | 5 175 | 0.1 | 0.5 | 1.6 |
| | 700 - < 800 | 3 000 | 0.3 | 5 175 | 0.8 | | | | 2.0 |
| | 800 - < 900 | | | | | | | | 0.6 |
| | 900 - < 1000 | | | | | | | | 1.1 |
| | > 1000 | | | 1 200 | 0.2 | 9 589 | 0.1 | 0.6 | |
| | TOTAL £ | 994 419 | 100.0 | 618 638 | 100.0 | 7 686 924 | 100.0 | 100.0 | 100.0 |
| AVE PRICE R / HL OR C / £ | | 360.91 | | 361.98 | | 385.81 | 392.88 | 443.73 | |
| Pinot Noir | 300 - < 400 | 23 160 | 100.0 | | | | | 60.7 | |
| | 400 - < 500 | | | | | | | 26.1 | 8.4 |
| | 500 - < 600 | | | 2 460 | 13.4 | 2 460 | 13.4 | | 14.6 |
| | 600 - < 700 | | | | | | | 13.2 | 40.8 |
| | 700 - < 800 | | | 15 880 | 86.6 | 15 880 | 86.6 | | 29.3 |
| | 800 - < 900 | | | | | | | | |
| | 900 - < 1000 | | | | | | | | |
| | > 1000 | | | | | | | | 6.9 |
| TOTAL £ | 23 160 | 100.0 | 18 340 | 100.0 | 18 340 | 100.0 | 100.0 | 100.0 | |
| AVE PRICE R / HL OR C / £ | | 375.00 | | 704.53 | | 704.53 | 420.45 | 652.16 | |
| Cinsaut | 100 - < 200 | | | | | | | 1.34 | |
| | 200 - < 300 | 196 270 | 38.1 | 195 101 | 49.1 | 838 651 | 36.3 | 22.1 | 0.6 |
| | 300 - < 400 | 319 512 | 61.9 | 202 649 | 50.9 | 1 265 640 | 54.7 | 46.3 | 54.5 |
| | 400 - < 500 | | | | | 170 201 | 7.4 | 25.8 | 31.8 |
| | 500 - < 600 | | | | | | | 4.5 | 12.7 |
| | 600 - < 700 | | | | | | | | 0.4 |
| | 700 - < 800 | | | | | 37 980 | 1.6 | | |
| TOTAL £ | 515 782 | 100.0 | 397 750 | 100.0 | 2 312 472 | 100.0 | 100.0 | 100.0 | |
| AVE PRICE R / HL OR C / £ | | 294.39 | | 288.07 | | 317.68 | 349.50 | 396.57 | |

| TYPE | PRICE RANGE R / HL OR C / ℓ | JULY 2006 | | JULY 2007 | | JAN - JULY 2007 | | JAN 06-DEC 06 | JAN 05-DEC 05 | |
|------------------------|----------------------------------|----------------------------------|------------------|-------------------|------------------|--------------------|-------------------|---------------|---------------|---------------|
| | | LITRES | % | LITRES | % | LITRES | % | % | % | |
| Rosé and Blanc de Noir | 100 - < 200 | | | 110 848 | 8.9 | 261 086 | 2.3 | | 0.2 | |
| | 200 - < 300 | 851 710 | 55.8 | 581 575 | 46.9 | 5 829 387 | 51.2 | 50.2 | 54.8 | |
| | 300 - < 400 | 663 701 | 43.5 | 519 590 | 41.9 | 4 810 106 | 42.2 | 43.7 | 32.1 | |
| | 400 - < 500 | 11 620 | 0.8 | | | 375 310 | 3.3 | 5.2 | 12.0 | |
| | 500 - < 600 | | | 29 320 | 2.4 | 113 570 | 1.0 | 0.8 | 1.0 | |
| | 900 - < 1000 | | | | | | | | 0.1 | |
| | TOTAL ℓ | 1 527 031 | 100.0 | 1 241 333 | 100.0 | 11 389 459 | 100.0 | 100.0 | 100.0 | |
| | AVE PRICE R / HL OR C / ℓ | | 291.71 | | 299.95 | | 304.60 | 304.68 | 305.31 | |
| Other red and blends | < 200 | 91 340 | 3.8 | 38 227 | 1.7 | 1 181 698 | 6.4 | 2.2 | 0.1 | |
| | 200 - < 300 | 467 900 | 19.5 | 495 450 | 21.9 | 2 913 393 | 15.8 | 16.6 | 17.8 | |
| | 300 - < 400 | 1 251 286 | 52.2 | 741 718 | 32.8 | 7 113 498 | 38.5 | 48.9 | 35.1 | |
| | 400 - < 500 | 295 269 | 12.3 | 735 710 | 32.5 | 4 512 430 | 24.4 | 16.6 | 28.3 | |
| | 500 - < 700 | 269 932 | 11.3 | 238 078 | 10.5 | 2 337 019 | 12.7 | 13.7 | 8.5 | |
| | > 700 | 21 950 | 0.9 | 14 427 | 0.6 | 410 529 | 2.2 | 2.0 | 10.3 | |
| | TOTAL ℓ | 2 397 677 | 100.0 | 2 263 610 | 100.0 | 18 468 567 | 100.0 | 100.0 | 100.0 | |
| | AVE PRICE R / HL OR C / ℓ | | 366.73 | | 368.08 | | 378.98 | 386.66 | 417.72 | |
| Chardonnay * | < 250 | | | | | 118 740 | 0.9 | | 0.4 | |
| | 250 - < 350 | 21 580 | 0.9 | | | 465 119 | 3.7 | 1.1 | 1.9 | |
| | 350 - < 450 | 547 825 | 22.7 | 715 780 | 41.4 | 3 702 562 | 29.5 | 17.2 | 9.4 | |
| | 450 - < 550 | 1 553 255 | 64.2 | 882 248 | 51.0 | 7 196 675 | 57.4 | 67.9 | 71.1 | |
| | 550 - < 650 | 277 957 | 11.5 | 96 940 | 5.6 | 850 304 | 6.8 | 13.0 | 15.9 | |
| | > 650 | 18 003 | 0.7 | 33 948 | 2.0 | 208 470 | 1.7 | 0.8 | 1.3 | |
| | TOTAL ℓ | 2 418 620 | 100.0 | 1 728 916 | 100.0 | 12 541 870 | 100.0 | 100.0 | 100.0 | |
| | AVE PRICE R / HL OR C / ℓ | | 486.31 | | 488.32 | | 467.71 | 495.11 | 494.22 | |
| Chardonnay Juice | AVE PRICE R / HL OR C / ℓ | | | | | 1 132 529 | 457.42 | 476.18 | 482.88 | |
| Sauvignon Blanc * | < 250 | | | | | 51 143 | 0.5 | 0.4 | 0.5 | |
| | 250 - < 350 | 23 160 | 2.6 | 237 130 | 24.3 | 552 741 | 5.5 | 3.0 | 2.5 | |
| | 350 - < 450 | 80 860 | 8.9 | 90 230 | 9.3 | 400 430 | 4.0 | 4.8 | 8.9 | |
| | 450 - < 550 | 310 807 | 34.3 | 314 000 | 32.2 | 6 266 701 | 61.9 | 46.3 | 55.6 | |
| | 550 - < 650 | 451 617 | 49.8 | 240 510 | 24.7 | 2 209 843 | 21.8 | 37.4 | 29.1 | |
| | > 650 | 40 460 | 4.5 | 93 265 | 9.6 | 650 463 | 6.4 | 8.1 | 3.4 | |
| | TOTAL ℓ | 906 904 | 100.0 | 975 135 | 100.0 | 10 131 321 | 100.0 | 100.0 | 100.0 | |
| | AVE PRICE R / HL OR C / ℓ | | 549.06 | | 494.80 | | 521.58 | 547.53 | 522.11 | |
| Sauvignon Blanc Juice | AVE PRICE R / HL OR C / ℓ | | | | | 3 770 167 | 500.98 | 500.00 | 500.00 | |
| Chenin Blanc * | 150 - < 200 | | | | | | | 0.0 | 0.2 | |
| | 200 - < 250 | 20 714 | 0.4 | 128 023 | 3.5 | 682 131 | 1.8 | 1.2 | 15.6 | |
| | 250 - < 350 | 3 462 014 | 74.3 | 2 998 801 | 81.4 | 28 742 884 | 74.7 | 76.8 | 63.4 | |
| | > 350 | 1 179 423 | 25.3 | 559 452 | 15.2 | 9 033 427 | 23.5 | 22.0 | 20.8 | |
| | | TOTAL ℓ | 4 662 151 | 100.0 | 3 686 276 | 100.0 | 38 458 442 | 100.0 | 100.0 | 100.0 |
| | | AVE PRICE R / HL OR C / ℓ | | 320.33 | | 297.57 | | 320.82 | 317.27 | 304.43 |
| Chenin Blanc Juice | AVE PRICE R / HL OR C / ℓ | | | | | 321 285 | 363.57 | 0.00 | 300.00 | |
| Colombar | 150 - < 200 | | | | | | | | 0.3 | |
| | 200 - < 250 | | | | | 14 220 | 0.1 | 1.6 | 25.7 | |
| | 250 - < 350 | 1 467 208 | 96.7 | 2 273 280 | 81.5 | 12 982 007 | 87.2 | 89.2 | 68.3 | |
| | > 350 | 49 710 | 3.3 | 514 980 | 18.5 | 1 896 710 | 12.7 | 9.1 | 5.6 | |
| | | TOTAL ℓ | 1 516 918 | 100.0 | 2 788 260 | 100.0 | 14 892 937 | 100.0 | 100.0 | 100.0 |
| | | AVE PRICE R / HL OR C / ℓ | | 301.71 | | 300.65 | | 300.91 | 293.68 | 277.70 |
| Riesling | 150 - < 200 | | | 1 500 | 0.4 | 1 500 | 0.1 | | | |
| | 200 - < 250 | | | | | | | | 9.2 | |
| | 250 - < 350 | 161 220 | 100.0 | 298 220 | 86.0 | 1 641 119 | 76.8 | 76.4 | 64.6 | |
| | > 350 | | | 47 150 | 13.6 | 493 640 | 23.1 | 23.6 | 26.2 | |
| | | TOTAL ℓ | 161 220 | 100.0 | 346 870 | 100.0 | 2 136 259 | 100.0 | 100.0 | 100.0 |
| | | AVE PRICE R / HL OR C / ℓ | | 308.48 | | 312.72 | | 323.83 | 323.79 | 313.12 |
| Semillon * | 150 - < 200 | | | | | 16 500 | 0.6 | 0.0 | | |
| | 200 - < 250 | | | | | | | 0.1 | 0.4 | |
| | 250 - < 350 | 279 990 | 42.6 | 81 950 | 31.4 | 644 095 | 25.3 | 56.7 | 51.8 | |
| | > 350 | 377 060 | 57.4 | 179 051 | 68.6 | 1 887 637 | 74.1 | 43.1 | 47.9 | |
| | | TOTAL ℓ | 657 050 | 100.0 | 261 001 | 100.0 | 2 548 232 | 100.0 | 100.0 | 100.0 |
| | | AVE PRICE R / HL OR C / ℓ | | 352.10 | | 341.37 | | 362.43 | 339.03 | 332.64 |
| Semillon Juice | AVE PRICE R / HL OR C / ℓ | | | | | 493 620 | 383.62 | 316.20 | 350.00 | |
| Other white and blends | 100 - < 125 | | | | | | | 0.0 | 0.0 | |
| | 125 - < 150 | | | | | | | | 0.0 | |
| | 150 - < 200 | | | 79 040 | 0.6 | 448 880 | 0.5 | 0.2 | 1.0 | |
| | 200 - < 250 | 2 392 164 | 20.2 | 1 204 300 | 9.7 | 8 252 221 | 10.1 | 16.1 | 45.1 | |
| | 250 - < 350 | 9 053 812 | 76.3 | 9 822 530 | 79.1 | 66 571 768 | 81.4 | 78.0 | 50.1 | |
| | > 350 | 416 973 | 3.5 | 1 316 980 | 10.6 | 6 461 573 | 7.9 | 5.7 | 3.8 | |
| | TOTAL ℓ | 11 862 949 | 100.0 | 12 422 850 | 100.0 | 81 734 442 | 100.0 | 100.0 | 100.0 | |
| | AVE PRICE R / HL OR C / ℓ | | 272.98 | | 279.44 | | 276.64 | 274.39 | 254.85 | |
| Juice | AVE PRICE R / HL OR C / ℓ | 65 670 | 279.64 | | | 1 568 906 | 341.90 | 439.28 | 344.75 | |
| Fortified wine | 150 - < 200 | 24 016 | 2.3 | 17 921 | 1.5 | 54 122 | 1.0 | 0.8 | 1.1 | |
| | 200 - < 250 | 1 970 | 0.2 | 62 059 | 5.1 | 62 059 | 1.2 | 0.0 | 0.2 | |
| | 250 - < 300 | | | | | | | 0.4 | 5.7 | |
| | 300 - < 350 | 410 869 | 39.9 | 483 382 | 40.0 | 1 864 268 | 35.6 | 56.8 | 76.5 | |
| | > 350 | 593 078 | 57.6 | 644 259 | 53.3 | 3 262 849 | 62.2 | 42.0 | 16.5 | |
| | | TOTAL ℓ | 1 029 933 | 100.0 | 1 207 621 | 100.0 | 5 243 298 | 100.0 | 100.0 | 100.0 |
| | AVE PRICE R / HL OR C / ℓ | | 380.18 | | 351.39 | | 385.27 | 354.58 | 346.88 | |
| All Varieties | AVE PRICE R / HL OR C / ℓ | 30 803 762 | 334.33 | 32 002 957 | 337.61 | 238 880 525 | 341.54 | 338.42 | 338.35 | |
| Wine for brandy | CENT PER LITRE @ 10% ALC/VOL | | 204.00 | | | | 220.74 | 210.09 | 206.79 | |
| Distilling wine | CENT PER LITRE @ 10% ALC/VOL | | 90.03 | | 75.33 | | 93.56 | 92.78 | 97.43 | |

* Including juice

AVERAGE PRICES OF WINE SOLD IN BULK

| TYPE | R / HL OR C / ℓ | | | | | | | |
|------------------------|--------------------|---------------|---------------|---------------|---------------|---------------|---------------|---------------|
| | JANUARY - DECEMBER | | | | | | | JAN - JUL |
| | 2000 | 2001 | 2002 | 2003 | 2004 | 2005 | 2006 | 2007 |
| CABERNET SAUVIGNON | 799.86 | 802.21 | 822.51 | 798.53 | 687.74 | 557.12 | 476.23 | 410.10 |
| TREND | | 100.29 | 102.53 | 97.08 | 86.13 | 81.01 | 85.48 | 86.11 |
| CABERNET FRANC | 719.23 | 736.48 | 702.26 | 736.52 | 650.08 | 384.92 | 408.12 | 362.43 |
| TREND | | 102.40 | 95.35 | 104.88 | 88.26 | 59.21 | 106.03 | 88.80 |
| MERLOT | 771.05 | 766.49 | 765.88 | 729.32 | 619.63 | 471.33 | 426.29 | 408.30 |
| TREND | | 99.41 | 99.92 | 95.23 | 84.96 | 76.07 | 90.44 | 95.78 |
| PINOTAGE | 765.37 | 730.88 | 689.85 | 651.98 | 519.22 | 443.73 | 392.88 | 385.81 |
| TREND | | 95.49 | 94.39 | 94.51 | 79.64 | 85.46 | 88.54 | 98.20 |
| RUBY CABERNET | 591.01 | 609.55 | 614.44 | 617.91 | 542.65 | 411.45 | 393.36 | 318.07 |
| TREND | | 103.14 | 100.80 | 100.56 | 87.82 | 75.82 | 95.60 | 80.86 |
| SHIRAZ | 802.80 | 781.67 | 748.47 | 757.73 | 638.04 | 548.21 | 514.37 | 472.43 |
| TREND | | 97.37 | 95.75 | 101.24 | 84.20 | 85.92 | 93.83 | 91.85 |
| CINSAUT | 408.51 | 432.56 | 486.37 | 540.29 | 485.66 | 396.57 | 349.50 | 317.68 |
| TREND | | 105.89 | 112.44 | 111.09 | 89.89 | 81.66 | 88.13 | 90.90 |
| PINOT NOIR | 707.26 | 661.01 | 631.24 | 740.05 | 896.91 | 652.16 | 420.45 | 704.53 |
| TREND | | 93.46 | 95.50 | 117.24 | 121.20 | 72.71 | 64.47 | 167.57 |
| ROSÉ AND BLANC DE NOIR | 187.20 | 190.08 | 294.51 | 366.92 | 374.01 | 305.31 | 304.68 | 304.60 |
| TREND | | 101.54 | 154.94 | 124.59 | 101.93 | 81.63 | 99.79 | 99.97 |
| OTHER RED AND BLENDS | 493.17 | 498.48 | 506.97 | 568.37 | 497.10 | 417.72 | 386.66 | 378.98 |
| TREND | | 101.08 | 101.70 | 112.11 | 87.46 | 84.03 | 92.56 | 98.01 |
| CHARDONNAY | 306.51 | 327.59 | 396.06 | 470.17 | 485.06 | 494.22 | 495.11 | 467.71 |
| TREND | | 106.88 | 120.90 | 118.71 | 103.17 | 101.89 | 100.18 | 94.47 |
| SAUVIGNON BLANC | 339.81 | 316.95 | 409.20 | 481.06 | 497.24 | 522.11 | 547.53 | 521.58 |
| TREND | | 93.27 | 129.11 | 117.56 | 103.36 | 105.00 | 104.87 | 95.26 |
| COLOMBAR | 145.71 | 143.19 | 203.17 | 273.69 | 264.20 | 277.70 | 293.68 | 300.91 |
| TREND | | 98.27 | 141.89 | 134.71 | 96.53 | 105.11 | 105.75 | 102.46 |
| RIESLING | 160.08 | 151.38 | 203.81 | 281.41 | 281.96 | 313.12 | 323.79 | 323.83 |
| TREND | | 94.57 | 134.63 | 138.07 | 100.20 | 111.05 | 103.41 | 100.01 |
| SEMILLON | 190.19 | 198.69 | 240.91 | 330.08 | 336.02 | 332.64 | 339.03 | 362.43 |
| TREND | | 104.47 | 121.25 | 137.01 | 101.80 | 98.99 | 101.92 | 106.90 |
| CHENIN BLANC | 160.13 | 159.46 | 215.21 | 302.90 | 290.08 | 304.43 | 317.27 | 320.82 |
| TREND | | 99.58 | 134.96 | 140.75 | 95.77 | 104.95 | 104.22 | 101.12 |
| OTHER WHITE AND BLENDS | 122.01 | 131.93 | 187.79 | 253.83 | 250.99 | 254.85 | 274.39 | 276.64 |
| TREND | | 108.13 | 142.34 | 135.17 | 98.88 | 101.54 | 107.67 | 100.82 |
| FORTIFIED WINE | 201.20 | 208.17 | 232.61 | 297.10 | 317.72 | 346.88 | 354.58 | 385.27 |
| TREND | | 103.46 | 111.74 | 127.72 | 106.94 | 109.18 | 102.22 | 108.66 |
| ALL VARIETIES | 212.03 | 229.28 | 299.36 | 378.06 | 354.16 | 338.35 | 338.42 | 341.54 |
| TREND | | 108.14 | 130.57 | 126.29 | 93.68 | 95.54 | 100.02 | 100.92 |
| ALL RED VARIETIES | 575.04 | 592.84 | 621.35 | 634.77 | 547.18 | 440.49 | 406.02 | 385.06 |
| TREND | | 103.10 | 104.81 | 102.16 | 86.20 | 80.50 | 92.17 | 94.84 |
| ALL WHITE VARIETIES | 145.39 | 155.74 | 215.89 | 291.14 | 287.97 | 297.57 | 310.51 | 321.24 |
| TREND | | 107.12 | 138.62 | 134.86 | 98.91 | 103.33 | 104.35 | 103.46 |

RSA EXPORTS: WINE AND FLAVOURED GRAPE LIQUOR

| PRODUCT | | AUGUST | | | 6 MONTHS | | | 12 MONTHS | | | Litres |
|-------------------------------------|------------|-------------------|-------------------|---------------|----------------------|----------------------|---------------|----------------------|----------------------|---------------|--------|
| | | 2006 | 2007 | Trend | MAR '06 - AUG '06 | MAR '07 - AUG '07 | Trend | SEP '05 - AUG '06 | SEP '06 - AUG '07 | Trend | |
| | | | | | | | | | | | |
| Chardonnay | P | 1 208 382 | 1 357 085 | 112.31 | 7 961 105 | 8 159 440 | 102.49 | 13 264 801 | 15 486 976 | 116.75 | |
| | B | 192 600 | 186 080 | 96.61 | 2 240 813 | 2 060 439 | 91.95 | 3 776 307 | 3 894 626 | 103.13 | |
| Sauvignon Blanc | P | 1 618 470 | 1 194 761 | 73.82 | 7 248 274 | 7 175 680 | 99.00 | 11 583 496 | 12 840 783 | 110.85 | |
| | B | 181 020 | 343 265 | 189.63 | 1 203 954 | 1 579 799 | 131.22 | 2 216 343 | 2 666 238 | 120.30 | |
| Chenin Blanc | P | 1 326 891 | 1 432 438 | 107.95 | 9 351 168 | 9 686 573 | 103.59 | 15 352 870 | 15 972 821 | 104.04 | |
| | B | 1 535 743 | 1 380 992 | 89.92 | 11 403 767 | 10 673 995 | 93.60 | 18 415 093 | 20 325 563 | 110.37 | |
| Other White | P | 3 280 618 | 2 510 229 | 76.52 | 18 253 387 | 17 079 577 | 93.57 | 37 767 141 | 32 432 605 | 85.88 | |
| | B | 1 989 344 | 2 096 243 | 105.37 | 8 537 670 | 9 518 616 | 111.49 | 18 937 776 | 15 203 628 | 80.28 | |
| TOTALS WHITE WINE | P | 7 434 361 | 6 494 513 | 87.36 | 42 813 934 | 42 101 270 | 98.34 | 77 968 308 | 76 733 185 | 98.42 | |
| | B | 3 898 707 | 4 006 580 | 102.77 | 23 386 204 | 23 832 849 | 101.91 | 43 345 519 | 42 090 055 | 97.10 | |
| | P+B | 11 333 068 | 10 501 093 | 92.66 | 66 200 138 | 65 934 119 | 99.60 | 121 313 827 | 118 823 240 | 97.95 | |
| Cabernet Sauvignon | P | 921 143 | 1 097 430 | 119.14 | 6 400 118 | 6 085 157 | 95.08 | 11 518 745 | 12 554 180 | 108.99 | |
| | B | 239 855 | 122 920 | 51.25 | 1 414 898 | 2 691 046 | 190.19 | 2 087 163 | 4 598 822 | 220.34 | |
| Shiraz | P | 1 131 318 | 1 254 343 | 110.87 | 5 295 232 | 6 947 184 | 131.20 | 9 523 689 | 13 992 749 | 146.93 | |
| | B | 48 000 | 169 257 | 352.62 | 726 898 | 655 152 | 90.13 | 1 501 201 | 1 142 692 | 76.12 | |
| Pinotage | P | 581 550 | 495 723 | 85.24 | 3 960 088 | 4 158 182 | 105.00 | 8 327 213 | 8 289 328 | 99.55 | |
| | B | 684 061 | 536 294 | 78.40 | 2 852 903 | 3 961 417 | 138.86 | 5 284 959 | 7 986 009 | 151.11 | |
| Merlot | P | 821 525 | 531 454 | 64.69 | 4 007 027 | 3 424 441 | 85.46 | 6 320 447 | 6 886 145 | 108.95 | |
| | B | 33 920 | 62 610 | 184.58 | 588 720 | 771 258 | 131.01 | 1 735 645 | 1 714 791 | 98.80 | |
| Other Red | P | 4 111 654 | 4 240 578 | 103.14 | 27 646 038 | 28 949 681 | 104.72 | 57 271 019 | 56 515 791 | 98.68 | |
| | B | 2 610 203 | 2 917 063 | 111.76 | 14 852 009 | 17 928 672 | 120.72 | 29 872 298 | 35 234 433 | 117.95 | |
| TOTALS RED WINE | P | 7 567 190 | 7 619 528 | 100.69 | 47 308 503 | 49 564 645 | 104.77 | 92 961 113 | 98 238 193 | 105.68 | |
| | B | 3 616 039 | 3 808 144 | 105.31 | 20 435 428 | 26 007 545 | 127.27 | 40 481 266 | 50 676 747 | 125.19 | |
| | P+B | 11 183 229 | 11 427 672 | 102.19 | 67 743 931 | 75 572 190 | 111.56 | 133 442 379 | 148 914 940 | 111.59 | |
| Blanc de Noir + Rosé | P | 565 378 | 21 584 | 3.82 | 5 193 184 | 4 828 000 | 92.97 | 7 106 054 | 7 149 489 | 100.61 | |
| | B | 806 140 | 0 | 0.00 | 7 430 685 | 6 815 578 | 91.72 | 9 293 425 | 8 522 006 | 91.70 | |
| | P+B | 1 371 518 | 21 584 | 1.57 | 12 623 869 | 11 643 578 | 92.23 | 16 399 479 | 15 671 495 | 95.56 | |
| TOTALS NATURAL WINE | P | 15 566 929 | 14 135 625 | 90.81 | 95 315 621 | 96 493 915 | 101.24 | 178 035 475 | 182 120 867 | 102.29 | |
| | B | 8 320 886 | 7 814 724 | 93.92 | 51 252 317 | 56 655 972 | 110.54 | 93 120 210 | 101 288 808 | 108.77 | |
| | P+B | 23 887 815 | 21 950 349 | 91.89 | 146 567 938 | 153 149 887 | 104.49 | 271 155 685 | 283 409 675 | 104.52 | |
| Fortified Wine | P | 40 127 | 21 323 | 53.14 | 168 902 | 146 467 | 86.72 | 323 812 | 448 474 | 138.50 | |
| | B | 23 654 | 0 | 0.00 | 23 654 | 0 | 0.00 | 48 525 | 9 800 | 20.20 | |
| | P+B | 63 781 | 21 323 | 33.43 | 192 556 | 146 467 | 76.06 | 372 337 | 458 274 | 123.08 | |
| Sparkling wine | P | 242 184 | 984 818 | 406.64 | 785 360 | 2 012 431 | 256.24 | 1 627 316 | 3 302 326 | 202.93 | |
| TOTALS ALL WINE | P | 15 849 240 | 15 141 766 | 95.54 | 96 269 883 | 98 652 813 | 102.48 | 179 986 603 | 185 871 667 | 103.27 | |
| | B | 8 344 540 | 7 814 724 | 93.65 | 51 275 971 | 56 655 972 | 110.49 | 93 168 735 | 101 298 608 | 108.73 | |
| | P+B | 24 193 780 | 22 956 490 | 94.89 | 147 545 854 | 155 308 785 | 105.26 | 273 155 338 | 287 170 275 | 105.13 | |
| OTHER(e.g. for vinegar, industrial) | P | 0 | 0 | - | 0 | 0 | - | 0 | 0 | - | |
| | B | 0 | 0 | - | 0 | 0 | - | 0 | 0 | - | |
| | P+B | 0 | 0 | - | 0 | 0 | - | 0 | 0 | - | |
| Flavoured Grape Liquor | P | 0 | 0 | - | 6 555 | 462 | 7.05 | 6 780 | 12 775 | 188.42 | |
| TOTALS ALL PRODUCTS | P | 15 849 240 | 15 141 766 | 95.54 | 96 276 438 | 98 653 275 | 102.47 | 179 993 383 | 185 884 442 | 103.27 | |
| | B | 8 344 540 | 7 814 724 | 93.65 | 51 275 971 | 56 655 972 | 110.49 | 93 168 735 | 101 298 608 | 108.73 | |
| | P+B | 24 193 780 | 22 956 490 | 94.89 | 147 552 409 | 155 309 247 | 105.26 | 273 162 118 | 287 183 050 | 105.13 | |

P=Packaged

B=Bulk

SOURCE: DEPARTMENT OF AGRICULTURE, DIRECTORATE FOOD SAFETY AND QUALITY ASSURANCE

RSA WINE EXPORTS PER COUNTRY (PACKAGED AND BULK)

PACKAGED AND BULK NATURAL WINE EXPORTS (LITRES) PER COUNTRY FOR THE PERIOD SEPTEMBER - AUGUST

| COUNTRY | 200509 - 200608 | | | | 200609 - 200708 | | | | TREND 200609 - 200708 / 200509 - 200608 | | | |
|----------------------|--------------------|--------------------|----------------------|--------------------|--------------------|--------------------|----------------------|--------------------|---|------------|----------------------|------------|
| | WHITE | RED | BLANC DE NOIR / ROSÉ | TOTAL | WHITE | RED | BLANC DE NOIR / ROSÉ | TOTAL | WHITE | RED | BLANC DE NOIR / ROSÉ | TOTAL |
| UNITED KINGDOM | 49 041 044 | 36 954 688 | 2 809 147 | 88 804 879 | 44 540 573 | 35 650 313 | 3 359 566 | 83 550 452 | 91 | 96 | 120 | 94 |
| GERMANY | 12 516 179 | 19 906 936 | 5 135 482 | 37 558 597 | 15 671 837 | 30 100 592 | 4 704 285 | 50 476 714 | 125 | 151 | 92 | 134 |
| THE NETHERLANDS | 14 011 543 | 21 076 992 | 5 579 060 | 40 667 595 | 10 473 823 | 15 299 176 | 4 678 123 | 30 451 122 | 75 | 73 | 84 | 75 |
| SWEDEN | 9 919 744 | 11 342 107 | 71 550 | 21 333 401 | 10 250 969 | 14 150 142 | 63 077 | 24 464 188 | 103 | 125 | 88 | 115 |
| DENMARK | 3 023 591 | 8 454 361 | 12 002 | 11 489 954 | 3 295 887 | 9 331 617 | 87 378 | 12 714 882 | 109 | 110 | 728 | 111 |
| CANADA | 4 641 531 | 7 395 641 | 75 195 | 12 112 367 | 4 252 670 | 7 989 520 | 50 855 | 12 293 045 | 92 | 108 | 68 | 101 |
| U.S.A. | 3 975 981 | 5 202 697 | 153 194 | 9 331 872 | 4 701 030 | 6 185 227 | 148 490 | 11 034 747 | 118 | 119 | 97 | 118 |
| BELGIUM | 4 479 704 | 3 900 120 | 647 128 | 9 026 952 | 4 798 027 | 4 188 448 | 618 226 | 9 604 701 | 107 | 107 | 96 | 106 |
| FRANCE | 2 648 670 | 3 771 883 | 1 168 927 | 7 589 480 | 3 280 446 | 3 788 434 | 937 894 | 8 006 774 | 124 | 100 | 80 | 105 |
| REPUBLIC OF IRELAND | 3 054 811 | 2 703 798 | 50 166 | 5 808 775 | 2 412 670 | 2 008 829 | 52 954 | 4 474 453 | 79 | 74 | 106 | 77 |
| FINLAND | 2 366 657 | 1 189 424 | 3 348 | 3 559 429 | 2 364 835 | 1 543 746 | 383 | 3 908 964 | 100 | 130 | 11 | 110 |
| SWITZERLAND | 1 332 347 | 1 528 689 | 243 109 | 3 104 145 | 1 754 143 | 1 462 943 | 375 231 | 3 592 317 | 132 | 96 | 154 | 116 |
| NEW ZEALAND | 3 628 356 | 13 536 | 1 665 | 3 643 557 | 1 787 611 | 861 952 | 1 890 | 2 651 453 | 49 | 6 368 | 114 | 73 |
| RUSSIA | 248 279 | 444 807 | 5 130 | 698 216 | 1 054 920 | 1 475 520 | 4 595 | 2 535 035 | 425 | 332 | 90 | 363 |
| KENYA | 850 165 | 806 920 | 24 984 | 1 682 069 | 797 777 | 912 625 | 16 542 | 1 726 944 | 94 | 113 | 66 | 103 |
| NORWAY | 285 105 | 1 496 846 | 72 | 1 782 023 | 225 073 | 1 262 694 | 1 124 | 1 488 891 | 79 | 84 | 1 561 | 84 |
| JAPAN | 512 775 | 770 671 | 0 | 1 283 446 | 516 389 | 837 666 | 0 | 1 354 055 | 101 | 109 | 0 | 106 |
| LATVIA | 270 441 | 498 968 | 0 | 769 409 | 445 186 | 705 271 | 3 375 | 1 153 832 | 165 | 141 | 0 | 150 |
| MAURITIUS * | 318 759 | 352 673 | 120 119 | 791 551 | 567 974 | 379 002 | 160 196 | 1 107 172 | 178 | 107 | 133 | 140 |
| TANZANIA | 555 804 | 401 505 | 11 579 | 968 888 | 651 075 | 441 559 | 8 537 | 1 101 171 | 117 | 110 | 74 | 114 |
| CHINA | 50 864 | 292 366 | 12 290 | 355 520 | 137 837 | 861 726 | 3 915 | 1 003 478 | 271 | 295 | 32 | 282 |
| NIGERIA * | 51 514 | 174 201 | 1 800 | 227 515 | 133 262 | 830 879 | 4 253 | 968 394 | 259 | 477 | 236 | 426 |
| UNITED ARAB EMIRATES | 408 555 | 341 753 | 16 641 | 766 949 | 399 490 | 383 392 | 15 059 | 797 941 | 98 | 112 | 90 | 104 |
| POLAND | 150 939 | 504 514 | 27 359 | 682 812 | 159 444 | 507 173 | 23 063 | 689 680 | 106 | 101 | 84 | 101 |
| AUSTRALIA | 154 519 | 230 151 | 22 085 | 406 755 | 193 584 | 139 005 | 11 385 | 343 974 | 125 | 60 | 52 | 85 |
| OTHER COUNTRIES | 2 815 950 | 3 686 132 | 207 447 | 6 709 529 | 3 956 708 | 7 617 489 | 341 099 | 11 915 296 | 141 | 207 | 164 | 178 |
| TOTAL | 121 313 827 | 133 442 379 | 16 399 479 | 271 155 685 | 118 823 240 | 148 914 940 | 15 671 495 | 283 409 675 | 98 | 112 | 96 | 105 |

PACKAGED NATURAL WINE EXPORTS (LITRES) PER COUNTRY FOR THE PERIOD SEPTEMBER - AUGUST

| COUNTRY | 200509 - 200608 | | | | 200609 - 200708 | | | | TREND 200609 - 200708 / 200509 - 200608 | | | |
|----------------------|-------------------|-------------------|----------------------|--------------------|-------------------|-------------------|----------------------|--------------------|---|------------|----------------------|------------|
| | WHITE | RED | BLANC DE NOIR / ROSÉ | TOTAL | WHITE | RED | BLANC DE NOIR / ROSÉ | TOTAL | WHITE | RED | BLANC DE NOIR / ROSÉ | TOTAL |
| UNITED KINGDOM | 34 385 064 | 29 476 899 | 2 538 041 | 66 400 004 | 30 666 609 | 28 398 998 | 2 858 905 | 61 924 512 | 89 | 96 | 113 | 93 |
| SWEDEN | 9 919 744 | 11 342 107 | 71 550 | 21 333 401 | 10 250 969 | 14 126 022 | 63 077 | 24 440 068 | 103 | 125 | 88 | 115 |
| THE NETHERLANDS | 8 092 886 | 11 277 976 | 2 621 100 | 21 991 962 | 7 293 979 | 9 396 307 | 2 320 241 | 19 010 527 | 90 | 83 | 89 | 86 |
| GERMANY | 3 625 592 | 10 093 973 | 1 013 280 | 14 732 845 | 3 855 281 | 9 919 584 | 715 859 | 14 490 724 | 106 | 98 | 71 | 98 |
| U.S.A. | 3 759 811 | 4 673 507 | 153 194 | 8 586 512 | 4 317 150 | 5 703 397 | 148 490 | 10 169 037 | 115 | 122 | 97 | 118 |
| DENMARK | 1 814 521 | 6 128 636 | 12 002 | 7 955 159 | 2 420 777 | 7 093 060 | 75 398 | 9 589 235 | 133 | 116 | 628 | 121 |
| CANADA | 2 626 377 | 4 061 018 | 75 195 | 6 762 590 | 2 668 239 | 4 425 680 | 50 855 | 7 144 774 | 102 | 109 | 68 | 106 |
| BELGIUM | 2 329 898 | 2 196 007 | 232 031 | 4 757 936 | 2 355 488 | 2 313 728 | 251 486 | 4 920 702 | 101 | 105 | 108 | 103 |
| REPUBLIC OF IRELAND | 3 031 251 | 2 703 798 | 50 166 | 5 785 215 | 2 388 940 | 2 008 829 | 52 954 | 4 450 723 | 79 | 74 | 106 | 77 |
| FINLAND | 1 691 807 | 1 076 654 | 3 348 | 2 771 809 | 1 797 485 | 1 423 006 | 383 | 3 220 874 | 106 | 132 | 11 | 116 |
| RUSSIA | 248 279 | 444 807 | 5 130 | 698 216 | 695 637 | 1 067 606 | 4 595 | 1 767 838 | 280 | 240 | 90 | 253 |
| KENYA | 850 165 | 806 920 | 24 984 | 1 682 069 | 797 777 | 912 625 | 16 542 | 1 726 944 | 94 | 113 | 66 | 103 |
| SWITZERLAND | 359 004 | 530 096 | 5 949 | 895 049 | 653 732 | 113 893 | 112 451 | 1 480 076 | 182 | 135 | 1 890 | 165 |
| NORWAY | 285 105 | 1 279 927 | 72 | 1 565 104 | 225 073 | 1 017 546 | 1 124 | 1 243 743 | 79 | 80 | 1 561 | 79 |
| JAPAN | 351 875 | 750 171 | 0 | 1 102 046 | 382 709 | 837 666 | 0 | 1 220 375 | 109 | 112 | 0 | 111 |
| LATVIA | 270 441 | 498 968 | 0 | 769 409 | 445 186 | 705 271 | 3 375 | 1 153 832 | 165 | 141 | 0 | 150 |
| TANZANIA | 555 804 | 401 505 | 11 579 | 968 888 | 651 075 | 441 559 | 8 537 | 1 101 171 | 117 | 110 | 74 | 114 |
| NIGERIA | 51 514 | 174 201 | 1 800 | 227 515 | 133 262 | 830 879 | 4 253 | 968 394 | 259 | 477 | 236 | 426 |
| UNITED ARAB EMIRATES | 408 555 | 341 753 | 16 641 | 766 949 | 399 490 | 383 392 | 15 059 | 797 941 | 98 | 112 | 90 | 104 |
| POLAND | 150 939 | 407 411 | 27 359 | 585 709 | 159 444 | 411 304 | 23 063 | 593 811 | 106 | 101 | 84 | 101 |
| CHINA | 50 864 | 210 686 | 810 | 262 360 | 113 837 | 460 706 | 3 915 | 578 458 | 224 | 219 | 483 | 220 |
| MAURITIUS | 102 739 | 78 653 | 32 919 | 214 311 | 285 539 | 206 072 | 86 196 | 577 807 | 278 | 262 | 262 | 270 |
| FRANCE | 199 308 | 195 561 | 3 407 | 398 276 | 239 525 | 275 796 | 26 757 | 542 078 | 120 | 141 | 785 | 136 |
| SOUTH KOREA | 365 618 | 49 943 | 0 | 415 561 | 224 771 | 73 309 | 0 | 298 080 | 61 | 147 | 0 | 72 |
| AUSTRALIA | 154 519 | 230 151 | 22 085 | 406 755 | 146 134 | 139 005 | 11 385 | 296 524 | 95 | 60 | 52 | 73 |
| OTHER COUNTRIES | 2 286 628 | 3 529 785 | 183 412 | 5 999 825 | 3 165 077 | 4 952 954 | 294 589 | 8 412 620 | 138 | 140 | 161 | 140 |
| TOTAL | 77 968 308 | 92 961 113 | 7 106 054 | 178 035 475 | 76 733 185 | 98 238 194 | 7 149 489 | 182 120 868 | 98 | 106 | 101 | 102 |

BULK NATURAL WINE EXPORTS (LITRES) PER COUNTRY FOR THE PERIOD SEPTEMBER - AUGUST

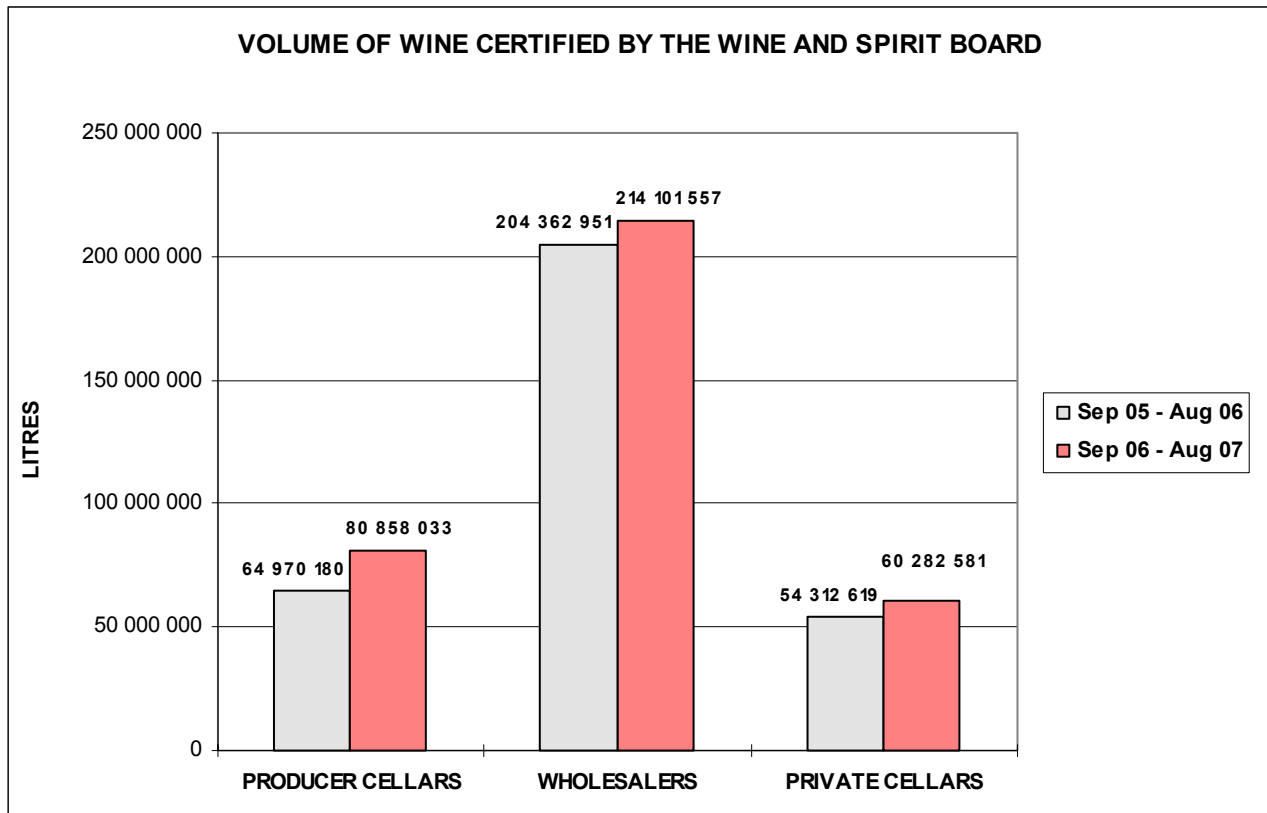
| COUNTRY | 200509 - 200608 | | | | 200609 - 200708 | | | | TREND 200609 - 200708 / 200509 - 200608 | | | |
|---------------------|-------------------|-------------------|----------------------|-------------------|-------------------|-------------------|----------------------|--------------------|---|------------|----------------------|------------|
| | WHITE | RED | BLANC DE NOIR / ROSÉ | TOTAL | WHITE | RED | BLANC DE NOIR / ROSÉ | TOTAL | WHITE | RED | BLANC DE NOIR / ROSÉ | TOTAL |
| GERMANY | 8 890 587 | 9 812 963 | 4 122 202 | 22 825 752 | 11 816 556 | 20 181 008 | 3 988 426 | 35 985 990 | 133 | 206 | 97 | 158 |
| UNITED KINGDOM | 14 655 980 | 7 477 789 | 271 106 | 22 404 875 | 13 873 964 | 7 251 315 | 500 661 | 21 625 940 | 95 | 97 | 185 | 97 |
| THE NETHERLANDS | 5 918 657 | 9 799 016 | 2 957 960 | 18 675 633 | 3 179 844 | 5 902 870 | 2 357 882 | 11 440 596 | 54 | 60 | 80 | 61 |
| FRANCE | 2 449 362 | 3 576 322 | 1 165 520 | 7 191 204 | 3 040 921 | 3 512 638 | 911 137 | 7 464 696 | 124 | 98 | 78 | 104 |
| CANADA | 2 015 154 | 3 334 623 | 0 | 5 349 777 | 1 584 431 | 3 563 840 | 0 | 5 148 271 | 79 | 107 | 0 | 96 |
| BELGIUM | 2 149 806 | 1 704 113 | 415 097 | 4 269 016 | 2 442 539 | 1 874 820 | 366 740 | 4 683 999 | 114 | 110 | 88 | 110 |
| DENMARK | 1 209 070 | 2 325 725 | 0 | 3 534 795 | 875 110 | 2 238 557 | 11 980 | 3 125 647 | 72 | 96 | 0 | 88 |
| NEW ZEALAND | 3 625 800 | 0 | 0 | 3 625 800 | 1 728 140 | 725 800 | 0 | 2 453 940 | 48 | 0 | 0 | 68 |
| SWITZERLAND | 973 343 | 998 593 | 237 160 | 2 209 096 | 1 100 411 | 749 050 | 262 780 | 2 112 241 | 113 | 75 | 111 | 96 |
| U.S.A. | 216 170 | 529 190 | 0 | 745 360 | 383 880 | 481 830 | 0 | 865 710 | 178 | 91 | 0 | 116 |
| RUSSIA | 0 | 0 | 0 | 0 | 359 283 | 407 914 | 0 | 767 197 | 0 | 0 | 0 | 0 |
| FINLAND | 674 850 | 112 770 | 0 | 787 620 | 567 350 | 120 740 | 0 | 688 090 | 84 | 107 | 0 | 87 |
| MAURITIUS | 216 020 | 274 020 | 87 200 | 577 240 | 282 435 | 172 930 | 74 000 | 529 365 | 131 | 63 | 85 | 92 |
| ITALY | 118 040 | 24 000 | 25 700 | 167 740 | 336 861 | 96 700 | 48 400 | 481 961 | 285 | 403 | 188 | 287 |
| CHINA | 0 | 81 680 | 11 480 | 93 160 | 24 000 | 401 020 | 0 | 425 020 | 0 | 491 | 0 | 456 |
| INDIA | 0 | 71 800 | 0 | 71 800 | 190 920 | 217 260 | 0 | 408 180 | 0 | 303 | 0 | 568 |
| CZECH REPUBLIC | 0 | 24 140 | 0 | 24 140 | 48 090 | 216 040 | 0 | 264 130 | 0 | 895 | 0 | 1 094 |
| NORWAY | 0 | 216 919 | 0 | 216 919 | 0 | 245 148 | 0 | 245 148 | 0 | 113 | 0 | 113 |
| JAPAN | 160 900 | 20 500 | 0 | 181 400 | 133 680 | 0 | 0 | 133 680 | 83 | 0 | 0 | 74 |
| POLAND | 0 | 97 103 | 0 | 97 103 | 0 | 95 869 | 0 | 95 869 | 0 | 99 | 0 | 99 |
| AUSTRALIA | 0 | 0 | 0 | 0 | 47 450 | 0 | 0 | 47 450 | 0 | 0 | 0 | 0 |
| TAIWAN | 0 | 0 | 0 | 0 | 0 | 24 000 | 0 | 24 000 | 0 | 0 | 0 | 0 |
| REPUBLIC OF IRELAND | 23 560 | 0 | 0 | 23 560 | 23 730 | 0 | 0 | 23 730 | 101 | 0 | 0 | 101 |
| AUSTRIA | 48 220 | 0 | 0 | 48 220 | 0 | 98 | 0 | 98 | 0 | 0 | 0 | 0 |
| OTHER COUNTRIES | 0 | 0 | 0 | 0 | 50 460 | 2 197 400 | 0 | 2 247 860 | 0 | 0 | 0 | 0 |
| TOTAL | 43 345 519 | 40 481 266 | 9 293 425 | 93 120 210 | 42 090 055 | 50 676 747 | 8 522 006 | 101 288 808 | 97 | 125 | 92 | 109 |

VOLUME OF WINE CERTIFIED (LITRES)

| | 1 MONTH | | | 3 MONTHS | | | 6 MONTHS | | | 12 MONTHS | | |
|-------------------------|-------------------|-------------------|------------|-------------------|--------------------|------------|--------------------|--------------------|------------|--------------------|--------------------|------------|
| | Aug-06 | Aug-07 | Trend | Jun-06 Aug-06 | Jun-07 Aug-07 | Trend | Mar-06 Aug-06 | Mar-07 Aug-07 | Trend | Sep-05 Aug-06 | Sep-06 Aug-07 | Trend |
| PRODUCER CELLARS | | | | | | | | | | | | |
| Estate Wine | 0 | 0 | | 0 | 0 | | 0 | 0 | | 0 | 0 | |
| Wine of Origin | 3 573 420 | 5 034 278 | 141 | 10 512 905 | 14 176 440 | 135 | 19 733 720 | 26 671 276 | 135 | 34 554 834 | 48 356 210 | 140 |
| Geographical Unit Wine | 3 223 911 | 2 964 494 | 92 | 8 123 608 | 9 547 940 | 118 | 16 783 571 | 17 379 582 | 104 | 30 415 346 | 32 501 823 | 107 |
| SUB TOTAL | 6 797 331 | 7 998 772 | 118 | 18 636 513 | 23 724 380 | 127 | 36 517 291 | 44 050 858 | 121 | 64 970 180 | 80 858 033 | 124 |
| WHOLESALERS | | | | | | | | | | | | |
| Estate Wine | 0 | 0 | | 0 | 0 | | 0 | 0 | | 0 | 0 | |
| Wine of Origin | 3 079 980 | 3 570 455 | 116 | 9 289 041 | 9 575 816 | 103 | 17 736 256 | 16 560 982 | 93 | 30 316 249 | 30 864 902 | 102 |
| Geographical Unit Wine | 15 812 991 | 17 107 874 | 108 | 46 391 197 | 51 104 962 | 110 | 92 847 011 | 99 782 857 | 107 | 174 046 702 | 183 236 655 | 105 |
| SUB TOTAL | 18 892 971 | 20 678 329 | 109 | 55 680 238 | 60 680 778 | 109 | 110 583 267 | 116 343 839 | 105 | 204 362 951 | 214 101 557 | 105 |
| PRIVATE CELLARS | | | | | | | | | | | | |
| Estate Wine | 934 102 | 921 097 | 99 | 2 252 040 | 2 382 832 | 106 | 4 455 549 | 4 069 623 | 91 | 8 008 446 | 7 896 437 | 99 |
| Wine of Origin | 3 184 278 | 4 107 021 | 129 | 9 025 460 | 10 046 603 | 111 | 16 963 592 | 18 253 515 | 108 | 31 461 776 | 35 219 284 | 112 |
| Geographical Unit Wine | 1 421 906 | 1 856 329 | 131 | 3 871 962 | 5 185 387 | 134 | 7 801 989 | 9 457 537 | 121 | 14 842 397 | 17 166 860 | 116 |
| SUB TOTAL | 5 540 286 | 6 884 447 | 124 | 15 149 462 | 17 614 822 | 116 | 29 221 130 | 31 780 675 | 109 | 54 312 619 | 60 282 581 | 111 |
| TOTAL | 31 230 588 | 35 561 548 | 114 | 89 466 213 | 102 019 980 | 114 | 176 321 688 | 192 175 372 | 109 | 323 645 750 | 355 242 171 | 110 |

| CERTIFIED BULK EXPORTS (included in above figures) | 1 MONTH | | | 3 MONTHS | | | 6 MONTHS | | | 12 MONTHS | | |
|--|-----------|------------|-------|------------------|------------------|-------|------------------|------------------|-------|------------------|------------------|-------|
| | Aug-06 | Aug-07 | Trend | Jun-06 Aug-06 | Jun-07 Aug-07 | Trend | Mar-06 Aug-06 | Mar-07 Aug-07 | Trend | Sep-05 Aug-06 | Sep-06 Aug-07 | Trend |
| | 8 666 140 | 12 608 971 | 145 | 27 460 273 | 35 127 110 | 128 | 55 805 166 | 65 237 331 | 117 | 100 675 025 | 118 297 813 | 118 |

*The total volume of wine certified in the 2006 calendar year made up 46.6% of the 2006 wine production (52.9%-2005, 44.1%-2004, 38.5%-2003, 43.7%-2002)



INDUSTRY INFORMATION COMMITTEE MEMBERS

Andries van Tonder - SALBA
 Diaan de Villiers - SALBA
 Paiter Botha - VinPo
 Bowen Botha - WCSA
 Marius Erasmus - WCSA
 Elias Holtzkampf - SALBA

Francois Malan - CEWPA
 Jaco Potgieter - SALBA
 Jan Booysen - Winetech
 Su Birch - WOSA
 Chris Albertyn - KWV
 Pierre Blake - OWB