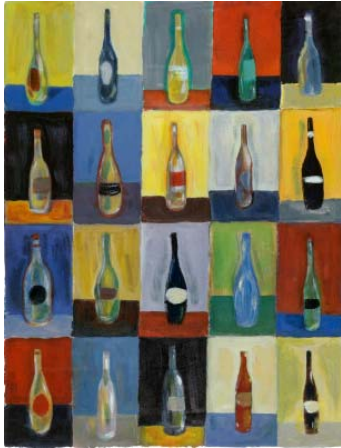


# Wine Industry

I N F O R M A T I O N

## August 2008



In this issue

- GRAPE AND WINE CROP p2
- HARVEST AND SALES ESTIMATES p3
- DOMESTIC SALES p4
- PRICE RANGES p5
- EXPORTS p10
- CERTIFICATION p12

### LATEST REGARDING THE 2008 HARVEST

The latest estimates indicate that the total wine stock at private and producer cellars will be 435,4 million litres on 31 August 2008 (page 3). It is 10,2 million litres more than on 31 December 2007. The total grape harvest is an estimated 5.1% more than the 2006 harvest. The total wine harvest is 1 093,0 million litres, 49,5 million litres more than the harvest in 2007 (page 2). Red grapes have again been used in the production of white wine, wine for brandy and distilling wine.

Of the total wine exported between August 2007 and July 2008, 43% was in bulk and 57% packaged wine. The packaged wine increased by 12.8% while the bulk wine exports increased by 53.4% for this period. The total wine exports for this period increased by 27,3%. Germany imported 30% of the total wine exported from South Africa in bulk and the United Kingdom imported 38% of the total wines exported from South Africa in packaged format.

Also in this issue – domestic sales and exports of natural wine during June 2008 (page 4), information regarding the price ranges in which wine were sold in bulk for the period January to June 2008 (pages 5 to 9), exports of wine and flavoured grape liquor during July 2008 (page 10), exports of natural wine per country (page 11) and volume of wine certified during July 2008 (page 12).

SAWIS-greetings until September  
Robin

A PUBLICATION OF:

 **SAWIS**

SPONSORED BY:

  
**B R E N N - O - K E M**  
RESPONSIBLE SERVICE PROVIDER AND  
SUPPLIER TO THE SA WINE INDUSTRY

FOR ANY ENQUIRIES CONTACT:

Robin Thomas  
Tel: (021) 807 5719  
E-mail: [robin@sawis.co.za](mailto:robin@sawis.co.za)  
Web page: [www.sawis.co.za](http://www.sawis.co.za)

# ESTIMATED 2008 GRAPE AND WINE CROP

DISTRICT	GRAPE CROP - TONS								ESTIMATE 27/11/2007	ESTIMATE 11/01/2008	ESTIMATE 08/02/2008	ESTIMATE 07/03/2008	ESTIMATE 30/04/2008	ESTIMATE 31/08/2008
	2000	2001	2002	2003	2004	2005	2006	2007	2008					
ORANGE RIVER	128 285	83 436	173 420	144 697	206 193	161 549	192 369	161 555	179 381	175 000	176 830	174 736	171 087	170 882
<i>trend (%) on previous year</i>	111.1	65.0	207.8	83.4	142.5	78.3	119.1	84.0	111.0	108.3	109.5	108.2	105.9	105.8
OLIFANTS RIVER	173 126	159 902	165 603	205 150	178 590	181 445	198 618	209 805	207 267	208 000	209 924	214 123	223 862	220 400
<i>trend (%) on previous year</i>	93.8	92.4	103.6	123.9	87.1	101.6	109.5	105.6	98.8	99.1	100.1	102.1	106.7	105.0
MALMESBURY	91 193	80 689	80 026	109 118	103 947	98 663	118 076	117 020	119 603	123 500	123 769	124 003	124 392	131 226
<i>trend (%) on previous year</i>	111.6	88.5	99.2	136.4	95.3	94.9	119.7	99.1	102.2	105.5	105.8	106.0	106.3	112.1
LITTLE KAROO	41 458	36 500	42 020	42 301	44 522	37 220	37 051	47 348	43 653	44 500	43 872	40 570	40 435	40 873
<i>trend (%) on previous year</i>	76.2	88.0	115.1	100.7	105.3	83.6	99.5	127.8	92.2	94.0	92.7	85.7	85.4	86.3
PAARL	128 018	123 572	105 287	144 833	138 802	138 796	145 937	152 855	157 025	158 000	158 397	159 927	168 293	154 866
<i>trend (%) on previous year</i>	99.0	96.5	85.2	137.6	95.8	100.0	105.1	104.7	102.7	103.4	103.6	104.6	110.1	101.3
ROBERTSON	161 055	141 267	165 304	176 440	184 095	158 679	166 782	196 796	196 740	194 000	192 697	192 501	203 093	204 284
<i>trend (%) on previous year</i>	80.2	87.7	117.0	106.7	104.3	86.2	105.1	118.0	100.0	98.6	97.9	97.8	103.2	103.8
STELLENBOSCH	105 533	98 514	76 999	114 285	115 276	115 229	122 742	113 740	123 499	120 100	119 751	117 802	115 446	119 179
<i>trend (%) on previous year</i>	95.1	93.3	78.2	148.4	100.9	100.0	106.5	92.7	108.6	105.6	105.3	103.6	101.5	104.8
WORCESTER	269 502	253 581	271 216	296 865	340 759	280 051	320 004	352 328	330 000	340 000	340 016	333 935	372 411	378 924
<i>trend (%) on previous year</i>	90.9	94.1	107.0	109.5	114.8	82.2	114.3	110.1	93.7	96.5	96.5	94.8	105.7	107.5
TOTAL (INDUSTRY)	1 098 170	977 461	1 079 875	1 233 689	1 312 184	1 171 632	1 301 579	1 351 447	1 357 168	1 363 100	1 365 256	1 357 597	1 419 019	1 420 634
<i>trend (%) on previous year</i>	93.6	89.0	110.5	114.2	106.4	89.3	111.1	103.8	100.4	100.9	101.0	100.5	105.0	105.1
LITRES PER GROSS TON	762	764	772	775	774	773	778	772	776	776	776	776	776	769
WINE PRODUCTION MILLION GROSS LITRES	837.2	746.5	834.2	956.0	1 015.7	905.2	1 013.0	1 043.5	1 053.2	1 057.8	1 059.4	1 053.5	1 101.2	1 093.0

## DISTRIBUTION OF PRODUCTION BETWEEN RED AND WHITE

YEAR	WINE GRAPES UTILISED FOR TOTAL WINE MAKING PURPOSES		WINE PRODUCED	
	% Red	% White	% Red	% White
1998	13.2	86.8	15.2	84.8
1999	13.4	86.6	16.3	83.7
2000	15.0	85.0	21.0	79.0
2001	21.1	78.9	25.2	74.8
2002	22.7	77.3	27.9	72.1
2003	28.1	71.9	32.1	67.9
2004	29.9	70.1	36.2	63.8
2005	33.5	66.5	38.9	61.1
2006	33.4	66.6	36.5	63.5
2007	34.4	65.6	36.1	63.9
2008	33.2	66.8	37.9	64.9

# HARVEST AND SALES ESTIMATES

WINE PRODUCED	Average % alc/vol 2008	million gross litres							Estimate 2008	Trend 2008/ 2007
		2001	2002	2003	2004	2005	2006	2007		
Wine		530.4	567.2	712.7	696.8	628.5	709.7	730.4	780.2	106.8
Wine for brandy	11.18	8.1	26.8	50.5	85.4	82.9	82.1	101.5	88.0	86.7
Grape juice concentrate and grape juice	10.77	99.4	115.3	70.7	87.8	64.6	73.2	65.2	66.9	102.7
Distilling wine	9.48	108.5	124.8	122.2	145.8	129.2	147.9	146.4	157.9	107.9
<b>Total</b>		<b>746.5</b>	<b>834.2</b>	<b>956.0</b>	<b>1 015.7</b>	<b>905.2</b>	<b>1 013.0</b>	<b>1 043.5</b>	<b>1 093.0</b>	<b>104.8</b>

WINE MARKET REQUIREMENT	million gross litres							Estimate 2008	Trend 2008/ 2007
	2001	2002	2003	2004	2005	2006	2007		
Producer sales to wholesalers: Wine in bulk	368.8	395.1	362.9	416.1	419.1	405.5	440.1	480.6	109.2
Grapes	50.4	43.9	66.3	67.8	67.5	71.8	67.2	70.9	105.5
	419.2	439.0	429.2	483.8	486.6	477.3	507.3	551.5	108.7
Direct producer sales (packaged wine) and exports	144.9	145.0	139.9	154.5	148.2	155.4	173.4	188.2	108.5
<b>Total</b>	<b>564.1</b>	<b>584.0</b>	<b>569.1</b>	<b>638.3</b>	<b>634.8</b>	<b>632.7</b>	<b>680.7</b>	<b>739.7</b>	<b>108.7</b>
Wine imported in bulk by wholesalers*		26.4	41.9		15.4	11.3	9.2	11.0	119.8
<b>Total wine market requirement</b>	<b>564.1</b>	<b>610.4</b>	<b>611.0</b>	<b>638.3</b>	<b>650.2</b>	<b>644.0</b>	<b>690.0</b>	<b>750.7</b>	<b>108.8</b>

\* concentrate component included

WINE PRODUCTION AND SALES	million gross litres							Estimate 2008	Trend 2008/ 2007
	2001	2002	2003	2004	2005	2006	2007		
Total wine stock at private and producer cellars on 1 Jan								425.2	
Wine production	530.4	567.2	712.7	696.8	628.5	709.7	730.4	780.2	106.8
Natural wine and must for sweetening imported by private and producer cellars	-	4.6	6.8	2.0	3.7	7.0	3.7	2.5	67.5
<b>Minus: Sales</b>	<b>564.1</b>	<b>584.0</b>	<b>569.1</b>	<b>638.3</b>	<b>634.8</b>	<b>632.7</b>	<b>680.7</b>	<b>739.7</b>	<b>108.7</b>
Transfers (previous vintages)	4.1	4.7	3.2	6.2	5.4	3.6	10.2	10.2	100.0
Lees destroyed/shortages	13.1	15.2	13.3	22.0	17.7	18.2	22.7	22.7	100.0
Total wine stock at private and producer cellars on 31 Dec	<b>242.3</b>	<b>209.3</b>	<b>336.8</b>	<b>363.7</b>	<b>339.4</b>	<b>403.1</b>	<b>425.2</b>	<b>435.4</b>	<b>102.4</b>
Total wine stock at producer cellars on 31 Dec	158.7	130.0	233.8	248.5	221.1	278.4	295.4		
Total wine stock at private cellars on 31 Dec	83.7	79.3	103.0	115.2	118.3	124.6	129.8		

DISTILLING WINE MARKET REQUIREMENT	million litres @ 10 alc/vol							Estimate 2008	Trend 2008/ 2007
	2001	2002	2003	2004	2005	2006	2007		
Ex bedryf	114.6	126.1	124.9	149.9	130.33	148.5	154.6	169.1	109.4
Ex import (current year)	-	23.0	61.0	16.0	24.3	31.1	39.6	7.2	18.2
Ex import (previous year)	-	-	-	-	30.0	10.0	-	-	-
Ex pool	-	15.5	1.5	1.9	1.8	1.4	0.04	0.04	100.0
<b>Total</b>	<b>114.6</b>	<b>164.6</b>	<b>187.4</b>	<b>167.8</b>	<b>186.4</b>	<b>191.0</b>	<b>194.2</b>	<b>176.4</b>	<b>90.8</b>
Pool deliveries	4.2	1.4	1.5	1.9	1.8	1.4	0.04	0.04	100.0
Ex import (destined for following year's market requirement)				30.0	10.0				

# DOMESTIC SALES AND EXPORTS OF NATURAL WINE

## DOMESTIC SALES OF NATURAL WINE

GROSS LITRE

	1 MONTH		3 MONTHS		6 MONTHS		12 MONTHS		MARKET SHARE	
	JUN 2007	JUN 2008	APR 2007	APR 2008	JAN 2007	JAN 2008	JUL 2006	JUL 2007	JUL 2007	JUN 2008
		TREND		TREND		TREND		TREND		
Wholesalers	13 516 854	13 784 014	40 469 302	38 910 643	79 314 022	77 363 889	167 328 898	167 282 263		53.02
Private Cellars	3 343 597	3 143 030	9 105 631	9 550 736	17 136 729	18 825 279	34 688 092	39 296 408		12.45
Producer Cellars	7 481 251	8 518 159	23 277 603	25 637 363	46 321 174	49 986 278	98 120 770	108 954 567		34.53
<b>SUB TOTAL</b>	<b>24 341 702</b>	<b>25 445 203</b>	<b>72 852 536</b>	<b>74 098 742</b>	<b>142 771 925</b>	<b>146 175 446</b>	<b>300 137 760</b>	<b>315 533 238</b>	<b>105.13</b>	<b>100.00</b>
Wine component of alc fruit bev	0	0	0	0	0	0	1 724 673	0	0.00	0.00
<b>TOTAL</b>	<b>24 341 702</b>	<b>25 445 203</b>	<b>72 852 536</b>	<b>74 098 742</b>	<b>142 771 925</b>	<b>146 175 446</b>	<b>301 862 433</b>	<b>315 533 238</b>	<b>104.53</b>	<b>100.00</b>

Included in these figures are the sales of locally bottled imported natural wine

## EXPORT OF NATURAL WINE

GROSS LITRE

	1 MONTH		3 MONTHS		6 MONTHS		12 MONTHS		MARKET SHARE	
	JUN 2007	JUN 2008	APR 2007	APR 2008	JAN 2007	JAN 2008	JUL 2006	JUL 2007	JUL 2007	JUN 2008
		TREND		TREND		TREND		TREND		
<b>TOTAL</b>	<b>27 925 664</b>	<b>38 961 572</b>	<b>79 812 929</b>	<b>103 348 054</b>	<b>142 366 444</b>	<b>187 780 335</b>	<b>279 552 356</b>	<b>354 852 663</b>	<b>126.94</b>	<b>100.00</b>

## DOMESTIC SALES AND EXPORT OF NATURAL WINE

GROSS LITRE

	1 MONTH		3 MONTHS		6 MONTHS		12 MONTHS		MARKET SHARE	
	JUN 2007	JUN 2008	APR 2007	APR 2008	JAN 2007	JAN 2008	JUL 2006	JUL 2007	JUL 2007	JUN 2008
		TREND		TREND		TREND		TREND		
<b>TOTAL</b>	<b>52 267 366</b>	<b>64 406 775</b>	<b>152 665 465</b>	<b>177 446 796</b>	<b>285 138 369</b>	<b>333 955 781</b>	<b>581 414 789</b>	<b>670 385 901</b>	<b>115.30</b>	<b>100.00</b>

SOURCE FOR EXPORT FIGURES: DEPARTMENT OF AGRICULTURE, DIRECTORATE FOOD SAFETY AND QUALITY ASSURANCE







TYPE	PRICE RANGE R / HL OF C / L	ORANGE RIVER		OLIFANT'S RIVER		MALMESBURY		LITTLE KAROO		PAARL		ROBERTSON		STELLENBOSCH		WORCESTER		INDUSTRY 2008		INDUSTRY %			
		LITRES	%	LITRES	%	LITRES	%	LITRES	%	LITRES	%	LITRES	%	LITRES	%	LITRES	%	LITRES	%	LITRES	%	2007	2006
Riesling	200 - < 250										14 744	3.2							14 744	1.4		0.0	
	250 - < 300										221 450	47.8							82 230	15.7	82 230	8.1	
	300 - < 350										210 640	45.5							291 950	55.8	513 400	50.4	
	350 - < 400										16 150	3.5							148 800	28.5	392 090	38.5	
	400 - < 450										462 984	100.0							522 980	100.0	1 018 614	100.0	
	<b>TOTAL L</b>											<b>346.51</b>							<b>334.32</b>	<b>370.00</b>	<b>341.31</b>	<b>317.82</b>	<b>323.79</b>
	<b>AVE PRICE</b>																						
	150 - < 200																						
	200 - < 250																						
	250 - < 300																						
300 - < 350																							
350 - < 400																							
400 - < 450																							
450 - < 500																							
500 - < 550																							
550 - < 600																							
600 - < 650																							
650 - < 700																							
<b>TOTAL L</b>																							
<b>AVE PRICE</b>																							
100 - < 150																							
150 - < 200																							
200 - < 250																							
250 - < 300																							
300 - < 350																							
350 - < 400																							
400 - < 450																							
450 - < 500																							
500 - < 550																							
550 - < 600																							
600 - < 650																							
650 - < 700																							
<b>TOTAL L</b>																							
<b>AVE PRICE</b>																							
100 - < 150																							
150 - < 200																							
200 - < 250																							
250 - < 300																							
300 - < 350																							
350 - < 400																							
400 - < 450																							
450 - < 500																							
500 - < 550																							
550 - < 600																							
600 - < 650																							
650 - < 700																							
<b>TOTAL L</b>																							
<b>AVE PRICE</b>																							
100 - < 150																							
150 - < 200																							
200 - < 250																							
250 - < 300																							
300 - < 350																							
350 - < 400																							
400 - < 450																							
450 - < 500																							
500 - < 550																							
550 - < 600																							
600 - < 650																							
650 - < 700																							
<b>TOTAL L</b>																							
<b>AVE PRICE</b>																							
100 - < 150																							
150 - < 200																							
200 - < 250																							
250 - < 300																							
300 - < 350																							
350 - < 400																							
400 - < 450																							
450 - < 500																							
500 - < 550																							
550 - < 600																							
600 - < 650																							
650 - < 700																							
<b>TOTAL L</b>																							
<b>AVE PRICE</b>																							
100 - < 150																							
150 - < 200																							
200 - < 250																							
250 - < 300																							
300 - < 350																							
350 - < 400																							
400 - < 450																							
450 - < 500																							
500 - < 550																							
550 - < 600																							
600 - < 650																							
650 - < 700																							
<b>TOTAL L</b>																							

# AVERAGE PRICES OF WINE SOLD IN BULK ACCORDING TO VINTAGE

TYPE	PRICE RANGE R / HL OR C / l	2005			2006			2007			JAN - JUN 2008			INDUSTRY GROWTH		
		2005 VINTAGE	OTHER VINTAGES	TOTAL	2006 VINTAGE	OTHER VINTAGES	TOTAL	2007 VINTAGE	OTHER VINTAGES	TOTAL	2008 VINTAGE	OTHER VINTAGES	TOTAL	2005 - 2006	2006 - 2007	2007 - 2008
		Cabernet Sauvignon	LITRES	4 171 545	7 240 107	11 411 652	4 031 268	8 763 430	12 794 698	7 745 967	11 773 450	19 519 417	642 093	7 537 026	8 179 119	12.12
	AVE PRICER / HL OR C / l	515.94	580.85	557.12	461.49	483.00	476.23	417.49	414.02	415.40	389.63	419.11	416.79	-14.52	-12.77	0.33
	LITRES	174 103	169 733	343 836	95 670	271 978	367 648	275 262	209 266	484 528	69 600	258 783	328 383	6.93	31.79	-32.23
	AVE PRICER / HL OR C / l	426.05	342.73	384.92	369.71	421.64	408.12	456.03	411.36	436.73	432.11	348.89	386.53	6.03	7.01	-16.07
	LITRES	2 938 759	4 717 838	7 656 897	1 601 831	4 987 484	6 589 315	2 065 812	3 814 518	5 880 330	480 534	2 975 155	3 455 689	-13.94	-10.76	-41.23
	AVE PRICER / HL OR C / l	364.86	440.47	411.45	319.77	417.00	393.36	281.65	314.30	302.83	320.04	333.26	331.42	-4.40	-23.01	9.44
	LITRES	4 061 067	7 440 764	11 501 831	3 501 475	5 395 154	8 896 629	4 775 152	7 574 527	12 349 679	491 486	6 590 404	7 081 890	-22.65	38.81	-42.66
	AVE PRICER / HL OR C / l	440.36	488.24	471.33	349.77	456.47	426.29	392.80	399.13	396.68	347.35	412.19	407.69	-9.56	-6.95	2.78
	LITRES	4 551 037	7 197 807	11 748 844	5 742 215	8 595 511	14 337 726	8 454 908	11 481 854	19 936 762	849 827	9 553 374	10 403 201	22.04	39.05	-47.82
	AVE PRICER / HL OR C / l	485.10	588.12	548.21	521.99	509.28	514.37	446.09	466.97	458.12	393.83	423.70	421.26	-6.17	-10.94	-8.05
	LITRES	7 314 746	9 338 874	16 648 620	6 137 551	8 638 914	14 776 465	5 254 275	7 606 814	12 861 089	720 669	6 498 400	7 219 069	-11.25	-12.96	-43.87
	AVE PRICER / HL OR C / l	411.37	469.09	443.73	378.24	403.28	392.88	391.10	400.54	396.68	364.75	411.39	406.73	-11.46	0.97	2.53
	LITRES	25 320	26 144	51 464	40 111	3 000	43 111	18 318	52 940	70 858		5 400	5 400	64.36	92.38	
	AVE PRICER / HL OR C / l	605.27	697.57	652.16	425.72	350.00	420.45	674.63	672.62	673.14		325.00	325.00	-35.53	60.10	-51.72
	LITRES	2 052 245	6 300 459	8 352 704	1 595 822	4 654 706	6 250 528	1 804 453	2 779 117	4 583 570	224 638	3 317 590	3 542 228	-25.17	-26.67	-22.72
	AVE PRICER / HL OR C / l	343.15	413.97	396.57	301.27	366.04	349.50	325.51	312.17	317.42	235.97	314.32	309.35	-11.87	-9.18	-2.54
	LITRES	9 631 634	2 520 060	12 151 884	11 706 756	2 172 220	13 878 976	13 617 175	4 101 376	17 714 175	7 614 270	5 456 364	13 070 634	14.21	27.63	-26.21
	AVE PRICER / HL OR C / l	307.26	297.87	305.31	304.57	305.27	304.68	293.09	310.52	297.13	324.42	288.26	309.33	-0.21	-2.48	4.11
	LITRES	11 802 024	21 869 359	33 671 383	9 691 510	21 036 945	30 728 455	14 588 097	27 390 994	41 979 091	4 564 341	23 115 532	27 679 873	-8.74	36.61	-34.06
	AVE PRICER / HL OR C / l	371.20	442.82	417.72	372.51	393.17	386.66	343.65	352.84	349.64	364.81	323.92	330.66	-7.44	-9.57	-5.43
	LITRES	12 306 058	5 777 779	18 083 837	12 481 165	5 219 171	17 700 336	13 393 606	5 085 455	18 479 061	7 639 442	5 715 978	13 355 420	-2.12	4.40	-27.73
	AVE PRICER / HL OR C / l	502.92	475.67	494.22	499.87	483.72	495.11	479.19	460.83	474.14	475.01	485.32	479.43	0.18	-4.24	1.12
	LITRES	12 697 870	1 490 984	14 188 854	8 320 457	1 698 065	10 018 522	12 055 148	1 919 885	13 975 033	7 704 002	2 878 923	10 582 925	-29.39	39.49	-24.27
	AVE PRICER / HL OR C / l	526.78	482.31	522.11	549.52	537.80	547.53	522.46	484.21	517.21	528.73	493.86	519.24	4.87	-5.54	0.39
	LITRES	46 295 843	12 621 189	58 917 032	44 764 301	7 438 344	52 202 645	46 228 759	15 293 149	61 519 908	17 262 213	15 224 391	32 486 604	-11.40	17.85	-47.19
	AVE PRICER / HL OR C / l	309.13	287.16	304.43	319.37	304.63	317.27	324.41	319.44	323.17	342.35	302.69	323.76	4.22	1.86	0.18
	LITRES	22 060 334	9 242 084	31 302 418	21 930 407	4 217 001	26 147 408	21 304 755	6 576 815	27 881 570	4 678 670	11 350 722	16 029 392	-16.47	6.63	-42.51
	AVE PRICER / HL OR C / l	283.51	263.84	277.70	291.36	305.73	293.68	295.53	303.69	297.46	314.63	293.60	299.74	5.75	1.29	0.77
	LITRES	2 448 890	543 483	2 992 073	2 493 996	136 950	2 630 946	2 683 039	1 032 840	3 715 679	429 064	589 550	1 018 614	-12.07	41.23	-72.59
	AVE PRICER / HL OR C / l	323.25	267.49	313.12	321.25	370.00	323.79	315.28	324.42	317.82	349.09	335.65	341.31	3.41	-1.84	7.39
	LITRES	3 069 433	719 240	3 788 673	2 776 518	727 474	3 503 992	3 082 645	592 898	3 675 543	1 445 777	999 308	2 445 085	-7.51	4.90	-33.48
	AVE PRICER / HL OR C / l	335.67	319.71	332.64	342.15	327.13	339.03	354.82	343.09	352.93	375.41	354.42	366.83	1.92	4.10	3.94
	LITRES	108 780 776	48 200 003	156 980 779	129 676 318	27 875 670	157 551 988	103 032 977	49 551 160	152 584 137	32 051 759	57 513 795	89 565 554	0.36	-3.15	-41.30
	AVE PRICER / HL OR C / l	262.10	238.48	254.85	276.48	264.65	274.39	278.07	268.68	275.02	287.17	260.33	269.93	7.67	0.23	-1.85
	LITRES	8 009 417	1 275 209	9 284 626	10 148 330	1 147 268	11 295 598	11 090 083	610 595	11 700 678	1 273 647	2 080 962	3 354 609	2.66	3.59	-71.33
	AVE PRICER / HL OR C / l	345.36	356.47	346.88	355.13	349.73	354.58	371.28	372.99	371.37	386.83	368.26	375.31	2.22	4.74	1.06
	LITRES	262 391 001	148 686 106	409 077 107	276 735 701	112 979 285	389 714 986	271 464 055	157 447 055	428 911 108	88 142 032	161 661 657	249 803 689	-4.73	10.06	-41.76
	AVE PRICER / HL OR C / l	323.59	364.74	338.35	323.18	375.74	338.42	331.40	340.86	334.87	350.16	329.96	332.56	0.02	-1.05	-0.69
	LITRES	46 709 860	66 788 604	113 498 464	44 127 869	64 519 342	108 647 211	58 459 222	76 451 962	134 911 184	15 657 458	65 219 928	80 877 386	-4.27	24.17	-40.05
	AVE PRICER / HL OR C / l	393.01	473.70	440.49	378.96	424.53	406.02	362.62	383.43	374.41	344.29	364.17	360.32	-7.83	-7.79	-3.76
	LITRES	207 671 724	78 622 293	286 294 017	222 469 502	47 312 675	269 712 171	201 914 297	80 364 496	282 299 246	71 210 927	94 360 767	165 571 694	-5.77	4.64	-41.35
	AVE PRICER / HL OR C / l	307.14	272.31	297.57	310.66	309.83	310.51	320.17	300.13	314.46	350.80	293.48	318.13	4.35	1.27	1.17

# RSA EXPORTS: WINE AND FLAVOURED GRAPE LIQUOR

PRODUCT		JULY			6 MONTHS			12 MONTHS			Litres
		2007	2008	Trend	FEB '07 - JUL '07	FEB '08 - JUL '08	Trend	AUG '06 - JUL '07	AUG '07 - JUL '08	Trend	
Chardonnay	P	1 713 430	2 180 702	127.27	8 012 889	9 804 170	122.35	15 330 803	17 894 642	116.72	
	B	569 809	1 342 300	235.57	1 972 979	4 523 118	229.25	3 901 146	8 749 424	224.28	
Sauvignon Blanc	P	1 640 785	1 719 242	104.78	6 866 698	7 866 438	114.56	13 264 493	14 294 077	107.76	
	B	440 010	245 740	55.85	1 381 362	2 101 305	152.12	2 503 993	3 834 068	153.12	
Chenin Blanc	P	1 468 528	1 788 335	121.78	9 319 675	9 768 260	104.81	15 867 275	17 456 040	110.01	
	B	2 036 358	3 199 282	157.11	10 968 662	12 159 553	110.86	20 480 314	23 175 111	113.16	
Other White	P	3 255 816	4 024 918	123.62	16 722 517	20 690 159	123.73	33 199 969	35 227 611	106.11	
	B	3 008 866	3 961 176	131.65	8 321 126	19 821 661	238.21	15 096 729	31 227 695	206.85	
<b>TOTALS WHITE WINE</b>	<b>P</b>	<b>8 078 559</b>	<b>9 713 197</b>	<b>120.23</b>	<b>40 921 779</b>	<b>48 129 027</b>	<b>117.61</b>	<b>77 662 540</b>	<b>84 872 370</b>	<b>109.28</b>	
	<b>B</b>	<b>6 055 043</b>	<b>8 748 498</b>	<b>144.48</b>	<b>22 644 129</b>	<b>38 605 637</b>	<b>170.49</b>	<b>41 982 182</b>	<b>66 986 298</b>	<b>159.56</b>	
	<b>P+B</b>	<b>14 133 602</b>	<b>18 461 695</b>	<b>130.62</b>	<b>63 565 908</b>	<b>86 734 664</b>	<b>136.45</b>	<b>119 644 722</b>	<b>151 858 668</b>	<b>126.92</b>	
Cabernet Sauvignon	P	1 012 809	1 323 947	130.72	6 141 418	6 871 680	111.89	12 377 353	13 604 933	109.92	
	B	709 148	415 150	58.54	2 912 955	2 828 018	97.08	4 715 757	5 821 387	123.45	
Shiraz	P	1 374 784	2 235 332	162.60	6 886 057	9 120 715	132.45	13 868 825	16 682 238	120.29	
	B	24 000	174 890	728.71	510 835	1 694 680	331.75	1 021 435	4 211 318	412.29	
Pinotage	P	584 729	872 021	149.13	4 410 930	5 144 210	116.62	8 373 643	9 087 743	108.53	
	B	995 580	671 496	67.45	3 911 599	3 544 385	90.61	8 133 776	7 833 864	96.31	
Merlot	P	546 316	917 100	167.87	3 386 485	4 088 099	120.72	7 169 466	7 732 506	107.85	
	B	104 255	216 156	207.33	734 528	1 609 223	219.08	1 686 101	3 219 066	190.92	
Other Red	P	4 812 316	6 116 127	127.09	29 287 106	32 680 868	111.59	56 341 773	62 863 256	111.57	
	B	3 169 486	3 608 453	113.85	18 209 387	29 053 703	159.55	34 927 573	58 008 137	166.08	
<b>TOTALS RED WINE</b>	<b>P</b>	<b>8 330 954</b>	<b>11 464 527</b>	<b>137.61</b>	<b>50 111 996</b>	<b>57 905 572</b>	<b>115.55</b>	<b>98 131 060</b>	<b>109 970 676</b>	<b>112.07</b>	
	<b>B</b>	<b>5 002 469</b>	<b>5 086 145</b>	<b>101.67</b>	<b>26 279 304</b>	<b>38 730 009</b>	<b>147.38</b>	<b>50 484 642</b>	<b>79 093 772</b>	<b>156.67</b>	
	<b>P+B</b>	<b>13 333 423</b>	<b>16 550 672</b>	<b>124.13</b>	<b>76 391 300</b>	<b>96 635 581</b>	<b>126.50</b>	<b>148 615 702</b>	<b>189 064 448</b>	<b>127.22</b>	
Blanc de Noir + Rosé	P	832 778	1 835 588	220.42	5 308 606	8 716 193	164.19	7 693 283	12 089 129	157.14	
	B	1 214 065	1 163 461	95.83	6 965 918	7 168 938	102.91	9 328 146	10 050 988	107.75	
	P+B	2 046 843	2 999 049	146.52	12 274 524	15 885 131	129.42	17 021 429	22 140 117	130.07	
<b>TOTALS NATURAL WINE</b>	<b>P</b>	<b>17 242 291</b>	<b>23 013 312</b>	<b>133.47</b>	<b>96 342 381</b>	<b>114 750 792</b>	<b>119.11</b>	<b>183 486 883</b>	<b>206 932 175</b>	<b>112.78</b>	
	<b>B</b>	<b>12 271 577</b>	<b>14 998 104</b>	<b>122.22</b>	<b>55 889 351</b>	<b>84 504 584</b>	<b>151.20</b>	<b>101 794 970</b>	<b>156 131 058</b>	<b>153.38</b>	
	<b>P+B</b>	<b>29 513 868</b>	<b>38 011 416</b>	<b>128.79</b>	<b>152 231 732</b>	<b>199 255 376</b>	<b>130.89</b>	<b>285 281 853</b>	<b>363 063 233</b>	<b>127.26</b>	
Fortified Wine	P	29 504	23 754	80.51	161 387	131 841	81.69	467 279	333 592	71.39	
	B	0	0	-	0	0	-	33 454	23 876	71.37	
	P+B	29 504	23 754	80.51	161 387	131 841	81.69	500 733	357 468	71.39	
Sparkling wine	P	261 657	305 994	116.94	1 155 669	1 740 071	150.57	2 559 692	3 411 873	133.29	
<b>TOTALS ALL WINE</b>	<b>P</b>	<b>17 533 452</b>	<b>23 343 060</b>	<b>133.13</b>	<b>97 659 437</b>	<b>116 622 704</b>	<b>119.42</b>	<b>186 513 854</b>	<b>210 677 640</b>	<b>112.96</b>	
	<b>B</b>	<b>12 271 577</b>	<b>14 998 104</b>	<b>122.22</b>	<b>55 889 351</b>	<b>84 504 584</b>	<b>151.20</b>	<b>101 828 424</b>	<b>156 154 934</b>	<b>153.35</b>	
	<b>P+B</b>	<b>29 805 029</b>	<b>38 341 164</b>	<b>128.64</b>	<b>153 548 788</b>	<b>201 127 288</b>	<b>130.99</b>	<b>288 342 278</b>	<b>366 832 574</b>	<b>127.22</b>	
OTHER(e.g. for vinegar, industrial)	P	0	0	-	0	0	-	0	0	-	
	B	0	454 571	-	0	646 616	-	0	1 151 247	-	
	P+B	0	454 571	-	0	646 616	-	0	1 151 247	-	
Flavoured Grape Liquor	P	0	0	-	462	15 522	3359.74	12 775	15 522	121.50	
<b>TOTALS ALL PRODUCTS</b>	<b>P</b>	<b>17 533 452</b>	<b>23 343 060</b>	<b>133.13</b>	<b>97 659 899</b>	<b>116 638 226</b>	<b>119.43</b>	<b>186 526 629</b>	<b>210 693 162</b>	<b>112.96</b>	
	<b>B</b>	<b>12 271 577</b>	<b>15 452 675</b>	<b>125.92</b>	<b>55 889 351</b>	<b>85 151 200</b>	<b>152.36</b>	<b>101 828 424</b>	<b>157 306 181</b>	<b>154.48</b>	
	<b>P+B</b>	<b>29 805 029</b>	<b>38 795 735</b>	<b>130.17</b>	<b>153 549 250</b>	<b>201 789 426</b>	<b>131.42</b>	<b>288 355 053</b>	<b>367 999 343</b>	<b>127.62</b>	

P=Packaged

SOURCE: DEPARTMENT OF AGRICULTURE, DIRECTORATE FOOD SAFETY AND QUALITY ASSURANCE

B=Bulk

# RSA NATURAL WINE EXPORTS PER COUNTRY (PACKAGED AND BULK)

## PACKAGED AND BULK NATURAL WINE EXPORTS (LITRES) PER COUNTRY FOR THE PERIOD AUGUST - JULY

COUNTRY	200608 - 200707				200708 - 200807				TREND 200708 - 200807 / 200608 - 200707			
	WHITE	RED	BLANC DE NOIR / ROSÉ	TOTAL	WHITE	RED	BLANC DE NOIR / ROSÉ	TOTAL	WHITE	RED	BLANC DE NOIR / ROSÉ	TOTAL
UNITED KINGDOM	45 104 378	35 733 703	3 563 718	84 401 799	48 093 141	42 453 289	8 994 083	99 540 513	107	119	252	118
GERMANY	15 812 067	30 447 284	5 131 621	51 390 972	21 069 128	36 399 604	5 194 220	62 662 952	133	120	101	122
THE NETHERLANDS	10 534 223	15 504 312	5 075 174	31 113 709	10 756 453	14 295 914	4 068 070	29 120 437	102	92	80	94
SWEDEN	10 431 254	14 055 822	64 589	24 551 665	11 242 322	14 514 648	197 550	25 954 520	108	103	306	106
ANGOLA *	175 792	2 330 093	8 910	2 514 795	311 387	17 086 655	364 430	17 762 472	177	733	4 090	706
CANADA	4 075 868	7 793 524	60 503	11 929 895	6 722 017	8 384 024	108 595	15 214 636	165	108	179	128
DENMARK	3 378 968	9 449 089	86 802	12 914 859	3 449 449	11 388 327	187 370	15 025 146	102	121	216	116
U.S.A.	4 740 408	6 078 745	166 427	10 985 580	8 259 680	5 246 178	208 890	13 714 748	174	86	126	125
NEW ZEALAND	1 774 282	516 013	1 890	2 292 185	5 698 418	4 376 241	13 545	10 088 204	321	848	717	440
RUSSIA	986 732	1 349 396	4 905	2 341 033	7 510 046	1 737 062	14 036	9 261 144	761	129	286	396
BELGIUM	4 864 684	4 172 718	697 098	9 734 500	4 411 585	3 737 228	470 778	8 619 591	91	90	68	89
FRANCE	3 146 268	3 623 437	1 065 714	7 835 419	2 174 762	4 291 282	862 712	7 328 756	69	118	81	94
SWITZERLAND	1 424 536	1 446 720	400 040	3 671 296	2 938 218	1 807 552	465 153	5 210 923	161	125	116	142
REPUBLIC OF IRELAND	2 445 900	2 068 081	58 129	4 572 110	2 583 919	2 359 513	79 241	5 022 673	106	114	136	110
AUSTRALIA	246 575	199 125	11 385	457 085	3 320 176	1 632 823	22 658	4 975 657	1 347	820	199	1 089
FINLAND	2 275 001	1 509 350	383	3 784 734	2 590 240	2 307 374	31 167	4 928 781	114	153	8 138	130
CHINA	134 439	924 012	15 395	1 073 846	154 376	2 481 666	7 016	2 643 058	115	269	46	246
KENYA	874 403	922 275	20 844	1 817 522	952 186	1 142 935	16 286	2 111 407	109	124	78	116
NORWAY	223 536	1 267 999	1 124	1 492 659	247 231	1 475 581	3 002	1 725 814	111	116	267	116
NIGERIA *	133 442	801 449	4 253	939 144	200 834	1 305 725	16 203	1 522 762	151	163	381	162
JAPAN	499 964	836 071	0	1 336 035	527 707	968 776	4 766	1 501 249	106	116	0	112
TANZANIA	626 808	416 140	8 537	1 051 485	793 273	624 963	22 155	1 440 391	127	150	260	137
UNITED ARAB EMIRATES	407 547	392 992	16 844	817 383	625 205	614 398	28 682	1 268 285	153	156	170	155
MAURITIUS *	511 297	332 604	170 636	1 014 537	548 838	453 117	200 958	1 202 913	107	136	118	119
POLAND	169 767	532 724	27 644	730 135	228 463	843 700	36 594	1 108 757	135	158	132	152
LATVIA	442 502	706 811	3 375	1 152 688	141 397	273 628	4 050	419 075	32	39	120	36
OTHER COUNTRIES	3 804 080	5 205 212	355 489	9 364 781	6 308 216	6 862 244	517 907	13 688 367	166	132	146	146
<b>TOTAL</b>	<b>119 644 721</b>	<b>148 615 701</b>	<b>17 021 429</b>	<b>285 281 851</b>	<b>151 858 667</b>	<b>189 064 447</b>	<b>22 140 117</b>	<b>363 063 231</b>	<b>127</b>	<b>127</b>	<b>130</b>	<b>127</b>

## PACKAGED NATURAL WINE EXPORTS (LITRES) PER COUNTRY FOR THE PERIOD AUGUST - JULY

COUNTRY	200608 - 200707				200708 - 200807				TREND 200708 - 200807 / 200608 - 200707			
	WHITE	RED	BLANC DE NOIR / ROSÉ	TOTAL	WHITE	RED	BLANC DE NOIR / ROSÉ	TOTAL	WHITE	RED	BLANC DE NOIR / ROSÉ	TOTAL
UNITED KINGDOM	31 266 058	28 490 057	3 038 137	62 794 252	35 912 398	35 214 488	7 373 763	78 500 649	115	124	243	125
SWEDEN	10 431 254	14 031 702	64 589	24 527 545	11 242 322	14 349 228	197 550	25 789 100	108	102	306	105
THE NETHERLANDS	7 410 720	9 488 813	2 544 012	19 443 545	7 549 611	9 436 664	2 343 307	19 329 582	102	99	92	99
GERMANY	3 716 702	9 728 128	757 875	14 202 705	4 249 102	10 259 938	801 833	15 310 873	114	105	106	108
DENMARK	2 429 338	7 286 869	74 822	9 791 029	2 510 839	8 232 938	115 326	10 859 103	103	113	154	111
U.S.A.	4 356 528	5 596 915	166 427	10 119 870	3 872 682	4 739 748	208 890	8 821 320	89	85	126	87
CANADA	2 684 837	4 472 433	60 503	7 217 773	2 678 279	4 892 961	84 445	7 655 685	100	109	140	106
BELGIUM	2 378 325	2 392 048	282 338	5 052 711	2 397 587	2 089 828	177 958	4 665 373	101	87	63	92
REPUBLIC OF IRELAND	2 422 170	2 068 081	58 129	4 548 380	2 260 699	1 886 065	79 241	4 226 005	93	91	136	93
FINLAND	1 755 611	1 364 280	383	3 120 274	2 116 830	1 945 784	6 917	4 069 531	121	143	1 806	130
KENYA	874 403	922 275	20 844	1 817 522	942 246	1 132 055	16 286	2 090 587	108	123	78	115
AUSTRALIA	199 125	199 125	11 385	409 635	835 389	768 803	22 658	1 626 850	420	386	199	397
NEW ZEALAND	46 062	80 613	1 890	128 565	561 698	949 661	13 545	1 524 904	1 219	1 178	717	1 186
NIGERIA *	133 442	801 449	4 253	939 144	200 834	1 305 725	16 203	1 522 762	151	163	381	162
TANZANIA	626 808	416 140	8 537	1 051 485	793 273	624 963	22 155	1 440 391	127	150	260	137
RUSSIA	675 392	1 012 810	4 905	1 693 107	552 875	870 308	14 036	1 437 219	82	86	286	85
JAPAN	366 284	815 571	0	1 181 855	396 307	968 776	4 766	1 369 849	108	119	0	116
NORWAY	223 536	1 022 342	1 124	1 247 002	199 195	1 141 627	3 002	1 343 824	89	112	267	108
UNITED ARAB EMIRATES	407 547	392 992	16 844	817 383	625 205	614 398	28 682	1 268 285	153	156	170	155
SWITZERLAND	642 305	687 490	113 360	1 443 155	421 429	639 526	51 143	1 112 098	66	93	45	77
POLAND	169 767	436 855	27 644	634 266	228 463	652 143	36 594	917 200	135	149	132	145
CHINA	110 439	465 232	3 915	579 586	154 376	748 270	7 016	909 662	140	161	179	157
FRANCE	253 570	228 330	25 857	507 757	244 458	353 150	32 328	629 936	96	155	125	124
MAURITIUS *	261 912	191 574	86 136	539 622	285 963	211 324	98 014	595 301	109	110	114	110
LATVIA	442 502	706 811	3 375	1 152 688	141 397	273 628	4 050	419 075	32	39	120	36
OTHER COUNTRIES	3 377 902	4 832 124	315 999	8 526 025	3 498 912	5 668 676	329 421	9 497 009	104	117	104	111
<b>TOTAL</b>	<b>77 662 539</b>	<b>98 131 059</b>	<b>7 693 283</b>	<b>183 486 881</b>	<b>84 872 369</b>	<b>109 970 675</b>	<b>12 089 129</b>	<b>206 932 173</b>	<b>109</b>	<b>112</b>	<b>157</b>	<b>113</b>

## BULK NATURAL WINE EXPORTS (LITRES) PER COUNTRY FOR THE PERIOD AUGUST - JULY

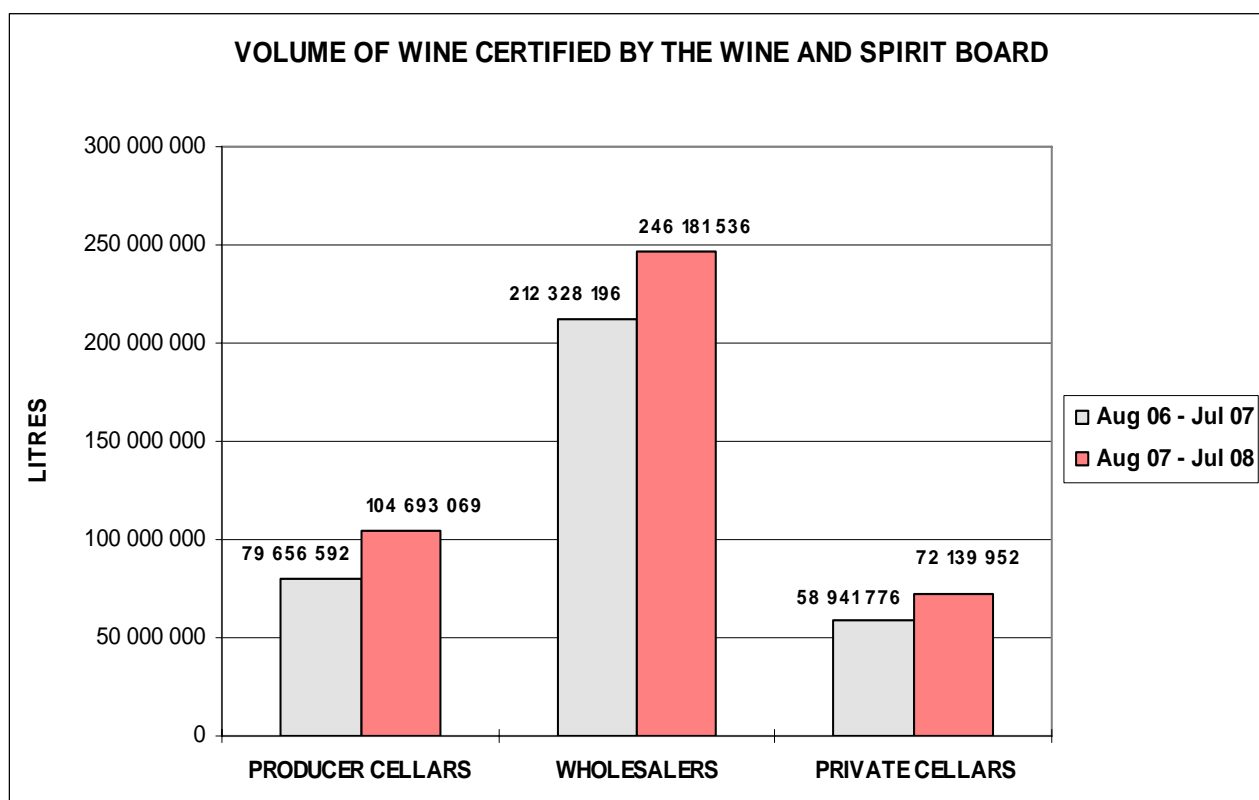
COUNTRY	200608 - 200707				200708 - 200807				TREND 200708 - 200807 / 200608 - 200707			
	WHITE	RED	BLANC DE NOIR / ROSÉ	TOTAL	WHITE	RED	BLANC DE NOIR / ROSÉ	TOTAL	WHITE	RED	BLANC DE NOIR / ROSÉ	TOTAL
GERMANY	12 095 365	20 719 156	4 373 746	37 188 267	16 820 026	26 139 666	4 392 387	47 352 079	139	126	100	127
UNITED KINGDOM	13 838 320	7 243 646	525 581	21 607 547	12 180 743	7 238 801	1 620 320	21 039 864	88	100	308	97
ANGOLA	0	2 100 000	0	2 100 000	123 880	16 734 126	360 996	17 219 002	0	797	0	820
THE NETHERLANDS	3 123 503	6 015 500	2 531 162	11 670 165	3 206 842	4 859 250	1 724 763	9 790 855	103	81	68	84
NEW ZEALAND	1 728 220	435 400	0	2 163 620	5 136 720	3 426 580	0	8 563 300	297	787	0	396
RUSSIA	311 340	336 586	0	647 926	6 957 171	866 754	0	7 823 925	2 235	258	0	1 208
CANADA	1 391 031	3 321 991	0	4 712 122	4 043 738	3 491 063	24 150	7 558 951	291	105	0	160
FRANCE	2 892 698	3 395 107	1 039 857	7 327 662	1 930 304	3 938 132	830 384	6 698 820	67	116	80	91
U.S.A.	383 880	481 830	0	865 710	4 386 998	506 430	0	4 893 428	1 143	105	0	565
DENMARK	949 630	2 162 220	11 980	3 123 830	938 610	3 155 389	72 044	4 166 043	99	146	601	133
SWITZERLAND	1 182 231	759 230	286 680	2 228 141	2 516 789	1 168 026	414 010	4 098 825	213	154	144	184
BELGIUM	2 486 359	1 780 670	414 760	4 681 789	2 013 998	1 647 400	292 820	3 954 218	81	93	71	84
AUSTRALIA	47 450	0	0	47 450	2 484 787	864 020	0	3 348 807	5 237	0	0	7 058
CHINA	24 000	458 780	11 480	494 260	0	1 733 396	0	1 733 396	0	378	0	351
CZECH REPUBLIC	48 090	216 040	0	264 130	785 719	407 046	0	1 192 765	1 634	188	0	452
ITALY	312 500	96 920	48 400	457 820	578 442	577 979	23 720	1 180 141	185	596	49	258
FINLAND	519 390	145 070	0	664 460	473 410	361 590	24 250	859 250	91	249	0	129
MAURITIUS	249 385	141 030	84 500	474 915	262 875	241 793	102 944	607 612	105	171	122	128
INDIA	190 920	217 260	0	408 180	382 480	94 500	0	548 300	200	43	0	134
THAILAND	50 460	48 960	0	99 420	143 604	217 174	23 980	384 758	285	444	0	387
NORWAY	0	245 657	0	245 657	48 036	333 954	0	381 990	0	136	0	155
POLAND	0	95 869	0	95 869	0	191 557	0	191 557	0	200	0	200
JAPAN</												

# VOLUME OF WINE CERTIFIED (LITRES)

	1 MONTH			3 MONTHS			6 MONTHS			12 MONTHS		
	Jul-07	Jul-08	Trend	May-07 Jul-07	May-08 Jul-08	Trend	Feb-07 Jul-07	Feb-08 Jul-08	Trend	Aug-06 Jul-07	Aug-07 Jul-08	Trend
<b>PRODUCER CELLARS</b>												
Estate Wine	0	0		0	0		0	0		0	0	
Wine of Origin	3 720 459	8 385 184	225	14 674 332	17 742 223	121	24 382 195	30 271 752	124	46 895 352	70 143 872	150
Geographical Unit Wine	3 348 681	4 659 579	139	9 948 985	9 563 725	96	15 980 612	17 138 045	107	32 761 240	34 549 197	105
<b>SUB TOTAL</b>	<b>7 069 140</b>	<b>13 044 763</b>	<b>185</b>	<b>24 623 317</b>	<b>27 305 948</b>	<b>111</b>	<b>40 362 807</b>	<b>47 409 797</b>	<b>117</b>	<b>79 656 592</b>	<b>104 693 069</b>	<b>131</b>
<b>WHOLESALERS</b>												
Estate Wine	0	0		0	0		0	0		0	0	
Wine of Origin	2 608 134	4 675 309	179	8 313 284	13 707 197	165	15 590 753	24 930 655	160	30 337 617	40 894 000	135
Geographical Unit Wine	14 814 691	25 375 657	171	53 452 827	63 623 305	119	98 111 173	113 987 276	116	181 990 579	205 287 536	113
<b>SUB TOTAL</b>	<b>17 422 825</b>	<b>30 050 966</b>	<b>172</b>	<b>61 766 111</b>	<b>77 330 502</b>	<b>125</b>	<b>113 701 926</b>	<b>138 917 931</b>	<b>122</b>	<b>212 328 196</b>	<b>246 181 536</b>	<b>116</b>
<b>PRIVATE CELLARS</b>												
Estate Wine	743 804	802 363	108	2 263 289	2 354 849	104	3 694 226	4 138 842	112	7 909 442	7 975 259	101
Wine of Origin	3 245 919	4 494 128	138	9 407 330	10 503 004	112	16 451 397	19 296 813	117	34 302 256	38 715 036	113
Geographical Unit Wine	1 677 589	2 474 932	148	5 105 427	7 927 124	155	8 908 649	14 815 728	166	16 730 078	25 449 657	152
<b>SUB TOTAL</b>	<b>5 667 312</b>	<b>7 771 423</b>	<b>137</b>	<b>16 776 046</b>	<b>20 784 977</b>	<b>124</b>	<b>29 054 272</b>	<b>38 251 383</b>	<b>132</b>	<b>58 941 776</b>	<b>72 139 952</b>	<b>122</b>
<b>TOTAL</b>	<b>30 159 277</b>	<b>50 867 152</b>	<b>169</b>	<b>103 165 474</b>	<b>125 421 427</b>	<b>122</b>	<b>183 119 005</b>	<b>224 579 111</b>	<b>123</b>	<b>350 926 564</b>	<b>423 014 557</b>	<b>121</b>

<b>CERTIFIED BULK EXPORTS</b> <small>(included in above figures)</small>	1 MONTH			3 MONTHS			6 MONTHS			12 MONTHS		
	Jul-07	Jul-08	Trend	May-07 Jul-07	May-08 Jul-08	Trend	Feb-07 Jul-07	Feb-08 Jul-08	Trend	Aug-06 Jul-07	Aug-07 Jul-08	Trend
	<b>9 992 026</b>	<b>18 506 351</b>	<b>185</b>	<b>35 957 598</b>	<b>45 443 010</b>	<b>126</b>	<b>60 709 915</b>	<b>80 761 860</b>	<b>133</b>	<b>114 354 982</b>	<b>156 446 384</b>	<b>137</b>

\*The total volume of wine certified in the 2007 calendar year made up 51.5% of the 2007 wine production (46.6%-2006,52.9%-2005,44.1%-2004,38.5%-2003)



## INDUSTRY INFORMATION COMMITTEE MEMBERS

Andries van Tonder - SALBA  
 Diaan de Villiers - SALBA  
 Paiter Botha - Vinpro  
 Bowen Botha - WCSA  
 Marius Erasmus - WCSA  
 Elias Holtzkampf - SALBA

Francois Malan - CEWPA  
 Jaco Potgieter - SALBA  
 Jan Booysen - Winetech  
 Su Birch - WOSA  
 Chris Albertyn - KWV  
 Pierre Blake - OWB