



# STATISTICS OF WINE-GRAPE VINES

as on 30 November 2003



Compiled from annual returns submitted by  
registered wine-growers

## ENQUIRIES:

**Fanie van Niekerk**

Tel: (021) 807 5704  
Fax: (021) 807 6001  
E-mail: [fanie@sawis.co.za](mailto:fanie@sawis.co.za)

**Bonita Floris**

Tel: (021) 807 5714  
Fax: (021) 807 6021  
E-mail: [floris@sawis.co.za](mailto:floris@sawis.co.za)  
Webpage: [www.sawis.co.za](http://www.sawis.co.za)

## STATUS OF ALL VINE TYPES

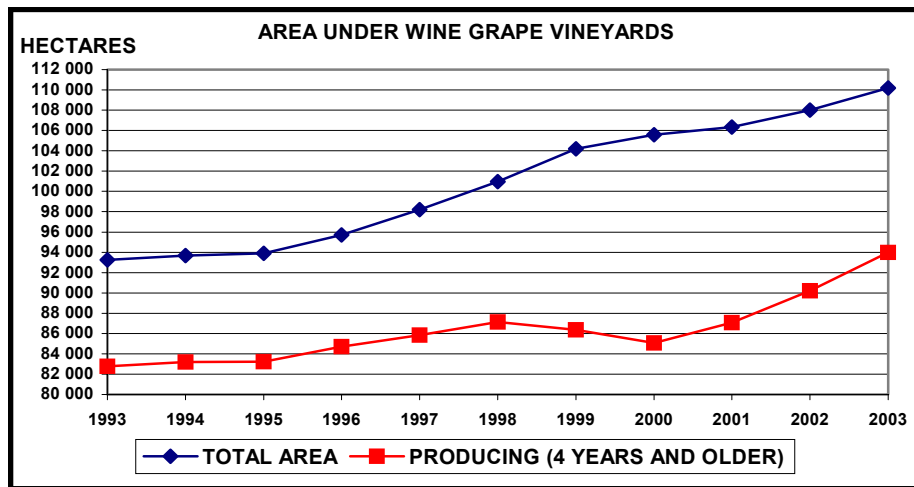
Vine Types	2001		2002		2003	
	Vines	Hectares	Vines	Hectares	Vines	Hectares
Wine grapes *	314 052 181	106 331	316 668 617	107 998	321 601 036	110 200
Table grapes **	22 538 374	11 173	23 732 562	11 946	24 492 832	13 354
Rootstocks	403 771	143	261 888	92	275 227	98
Currants ***	1 016 243	333	1 045 404	348	1 065 208	356
<b>Total</b>	<b>338 010 569</b>	<b>117 979</b>	<b>341 708 471</b>	<b>120 384</b>	<b>347 434 303</b>	<b>124 008</b>

\* Includes sultana and hanepoot also used as table grapes and for raisins.

\*\* Only portion of production is utilised for production of wine.

\*\*\* For raisins only.

The area under wine-grapes has increased constantly from 1990. The area under wine-grapes is 110 200 hectares in 2003 - an increase of 18.2% (16 953 hectares) from 1993.



## AREA DISTRIBUTION OF WINE GRAPE VARIETIES

Wine grape varieties as % of total area

VARIETY	1996	1997	1998	1999	2000	2001	2002	2003
Chenin blanc	27.7	26.8	25.6	23.8	21.4	19.8	18.4	17.1
Sultana *	11.0	11.1	10.9	11.1	11.1	11.2	10.9	12.7
Colombar(d)	10.7	11.0	11.1	11.2	10.8	10.5	10.2	9.8
Sauvignon blanc	4.7	4.9	4.9	5.1	5.1	5.4	6.0	6.1
Chardonnay	4.5	5.2	5.7	5.7	5.7	5.6	5.7	5.9
Hanepoot *	5.6	5.3	4.9	4.3	3.8	3.4	3.0	2.7
Cape Riesling	3.5	3.3	3.1	2.7	2.0	1.7	1.4	1.2
Sémillon	0.9	1.0	1.0	1.0	1.0	0.9	0.9	0.9
Weisser Riesling	0.8	0.8	0.7	0.6	0.5	0.4	0.3	0.3
Other white varieties	12.3	11.1	10.1	8.4	6.3	4.9	4.2	2.7
<b>Total white varieties</b>	<b>81.7</b>	<b>80.5</b>	<b>78.0</b>	<b>73.9</b>	<b>68.0</b>	<b>63.8</b>	<b>61.0</b>	<b>59.4</b>
Cabernet Sauvignon	4.9	5.1	5.6	6.7	8.4	9.8	11.0	11.7
Shiraz	1.1	1.4	2.0	3.3	5.3	6.7	7.5	7.7
Pinotage	3.3	3.9	4.7	5.5	6.2	6.5	6.4	6.1
Merlot	1.9	2.2	2.6	3.6	4.6	5.4	5.9	6.0
Cinsaut noir	4.3	4.1	3.9	3.6	3.3	3.2	3.0	2.7
Ruby Cabernet	0.8	0.9	1.2	1.5	1.9	2.1	2.2	2.2
Cabernet franc	0.3	0.3	0.3	0.3	0.5	0.5	0.7	0.8
Pinot noir	0.4	0.4	0.4	0.4	0.5	0.5	0.5	0.5
Other red varieties	1.3	1.2	1.3	1.3	1.3	1.5	1.8	2.9
<b>Total red varieties</b>	<b>18.3</b>	<b>19.5</b>	<b>22.0</b>	<b>26.1</b>	<b>32.0</b>	<b>36.2</b>	<b>39.0</b>	<b>40.6</b>
<b>Total white and red</b>	<b>100.0</b>	<b>100.0</b>	<b>100.0</b>	<b>100.0</b>	<b>100.0</b>	<b>100.0</b>	<b>100.0</b>	<b>100.0</b>
<b>Total hectares</b>	<b>95 721</b>	<b>98 203</b>	<b>100 979</b>	<b>104 179</b>	<b>105 566</b>	<b>106 331</b>	<b>107 998</b>	<b>110 200</b>

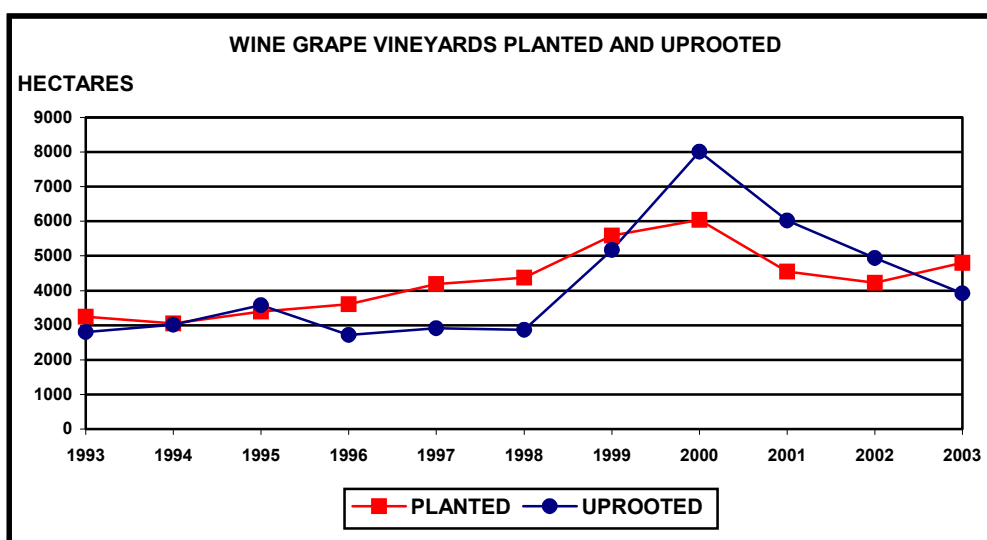
\* Also utilised for raisins and as table grapes.

## WINE-GRAPE VINES PLANTED AND UPROOTED FOR 2003

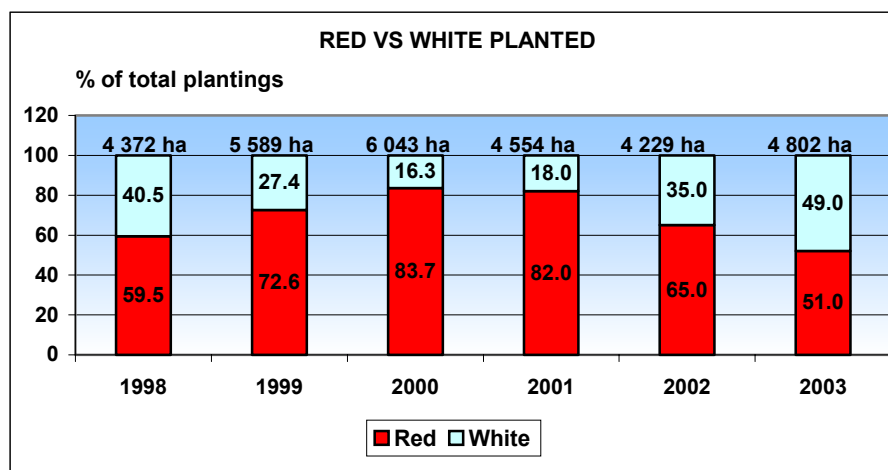
REGION	PLANTINGS		UPROOTINGS		* AMENDMENTS	
	VINES	HECTARES	VINES	HECTARES	VINES	HECTARES
ORANGE RIVER	398 189	199.13	659 080	346.28	- 7 200	22.37
OLIFANTS RIVER	844 115	332.34	844 584	275.00	330 340	140.77
MALMESBURY	2 039 858	844.99	1 338 440	548.06	334 073	101.22
LITTLE KAROO	337 980	118.61	462 107	145.69	48 939	20.29
PAARL	2 667 351	955.48	2 303 353	738.20	924 423	322.30
ROBERTSON	2 138 970	637.54	1 317 273	369.25	446 471	97.49
STELLENBOSCH	2 030 552	713.79	2 822 761	870.18	823 237	370.49
WORCESTER	3 037 758	999.66	2 409 363	627.14	694 324	245.05
TOTAL	13 494 773	4 801.54	12 156 961	3 919.80	3 594 607	1 319.98

\* Due to recounting of vines as well as plantings and uprootings of previous years which were not taken into account.

From 1990 to 1995 plantings and uprootings were in balance with each other. From 1996 to 1999 more vines were planted than uprooted. This trend, however, changed after 1999 - 2002 where more vines were uprooted than planted, however, in 2003 - 4 802 hectares were planted while 3 920 hectares were uprooted.



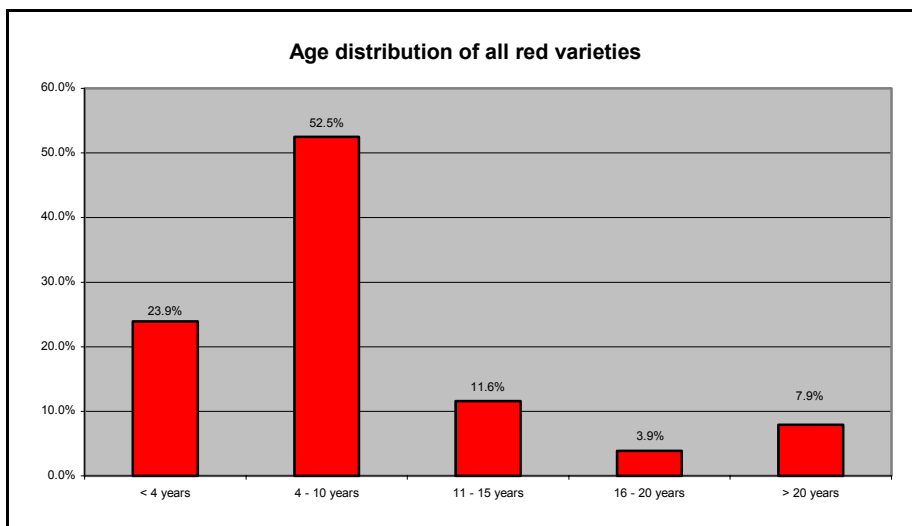
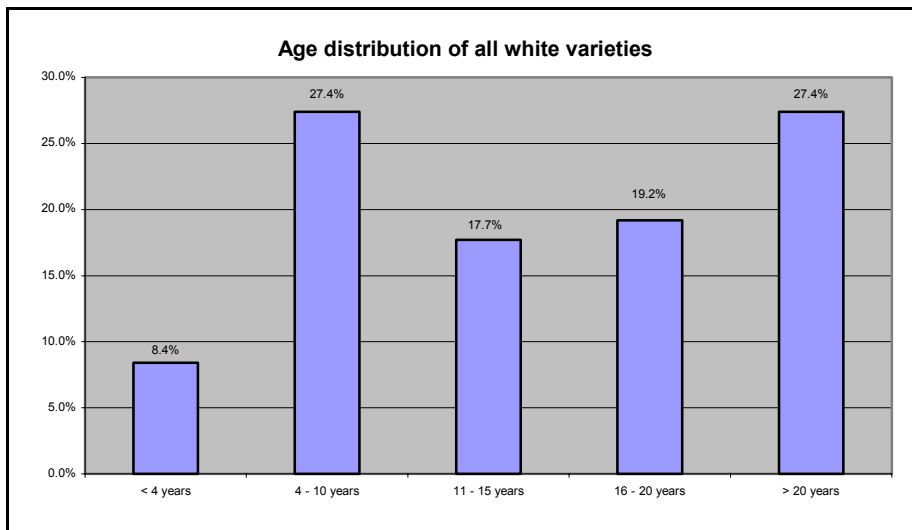
During 2003 about 49% of plantings were white and 51% red. From 1996 to 2001 plantings of red varieties increased predominantly in contrast with those of white varieties. In 2002 the plantings of red varieties, however, decreased by 26.6% and with a further 10.5% in 2003. Total plantings increased by 13.5% in 2003 from 2002.

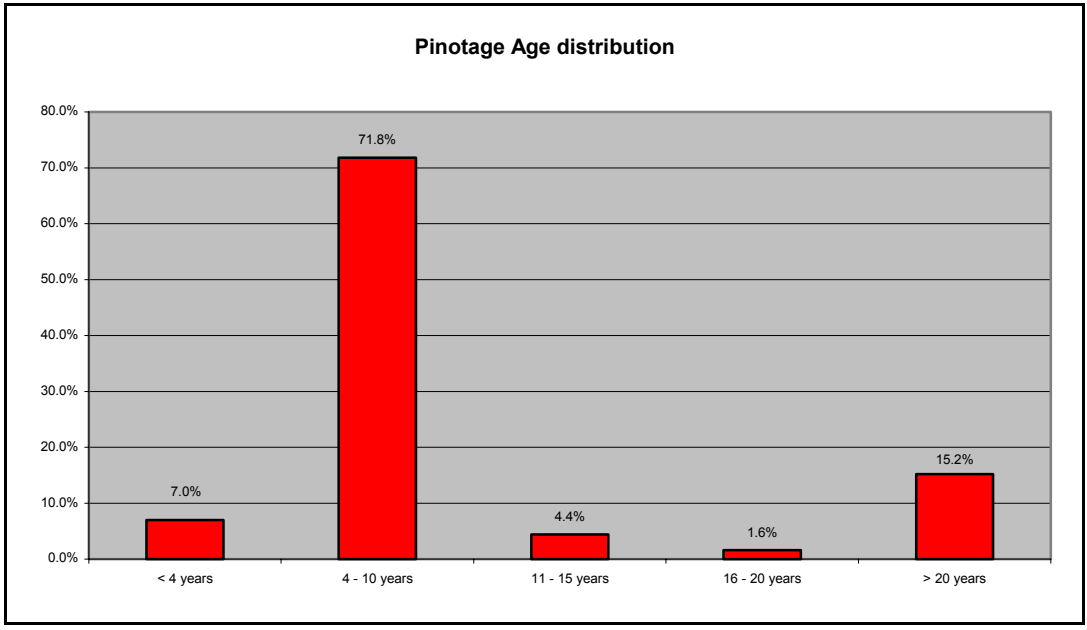
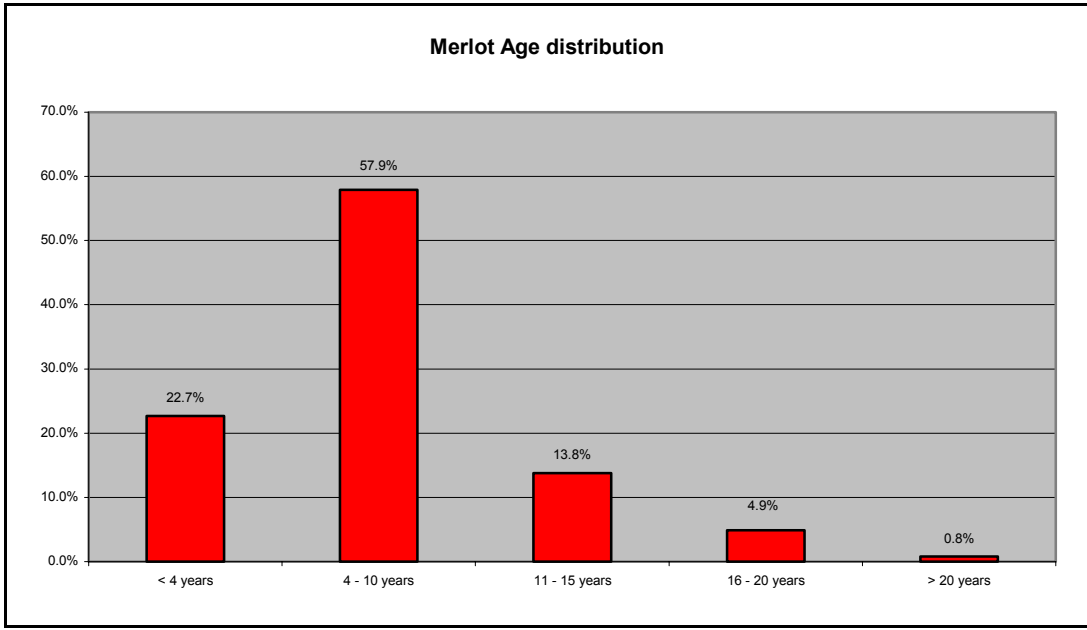
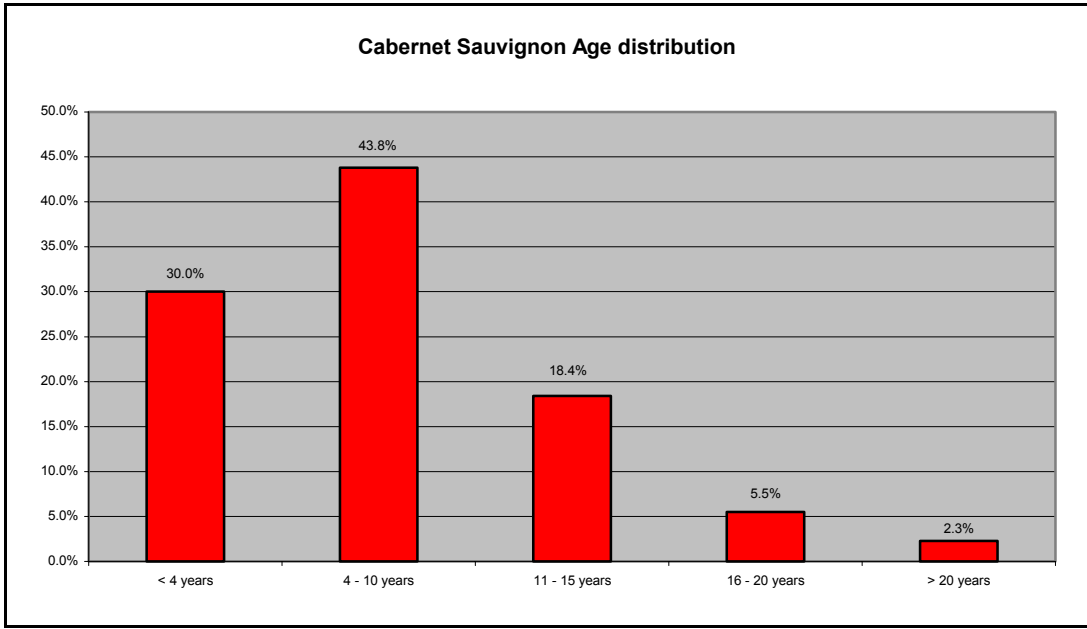


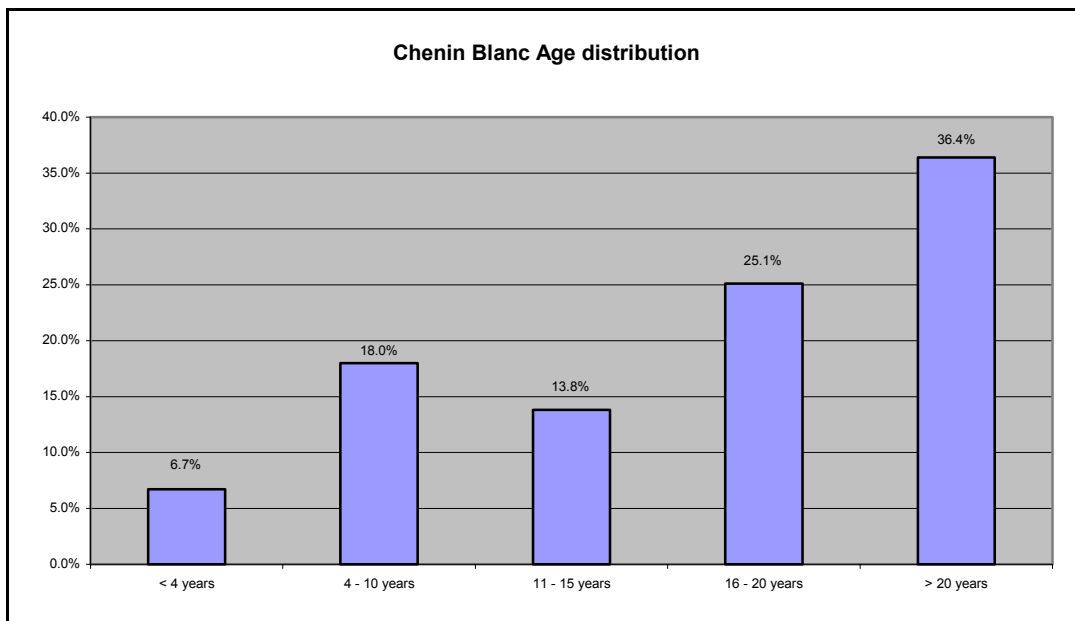
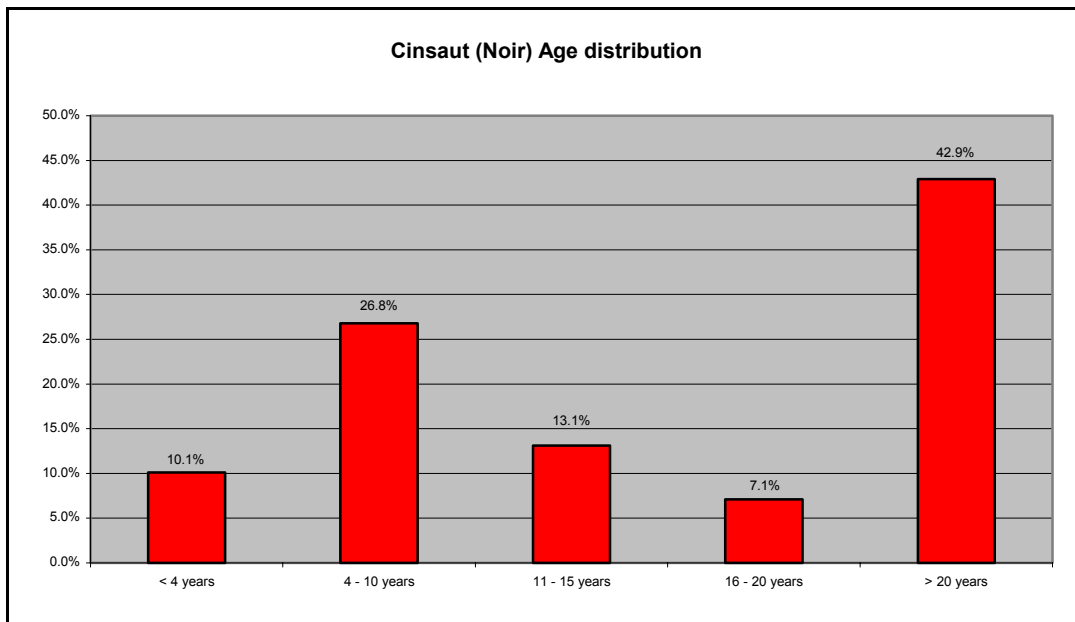
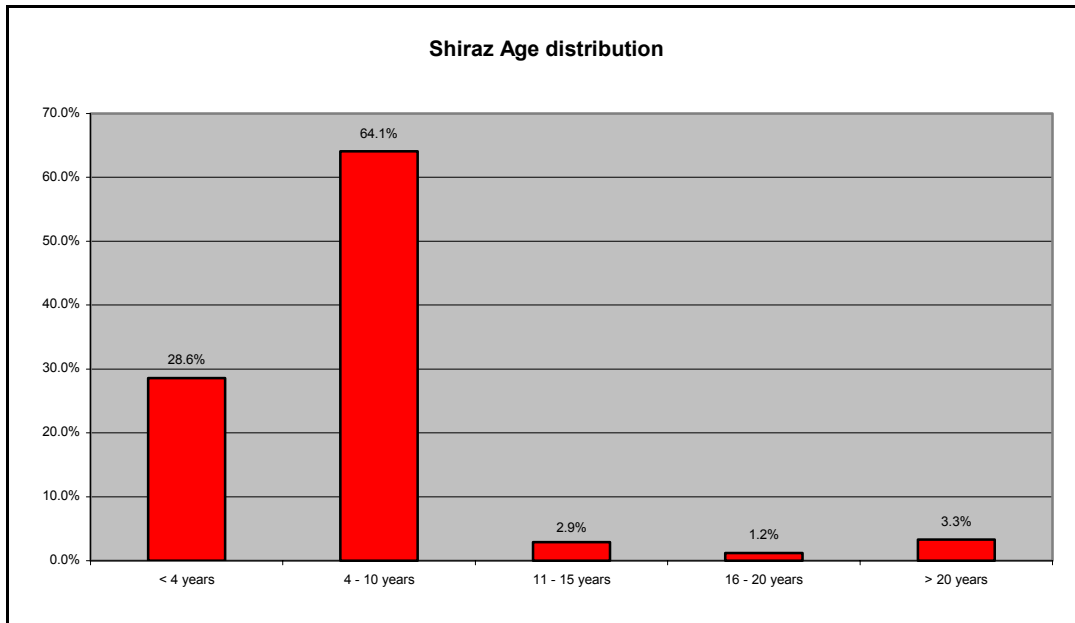
## AGE OF VINES PER WINE REGION FOR 2003 - %

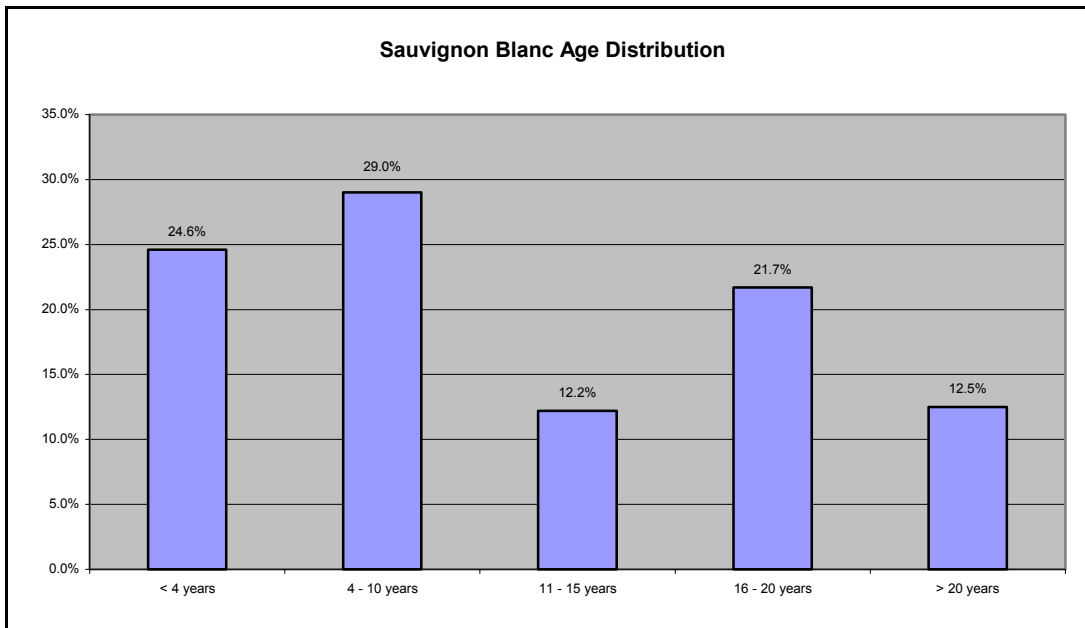
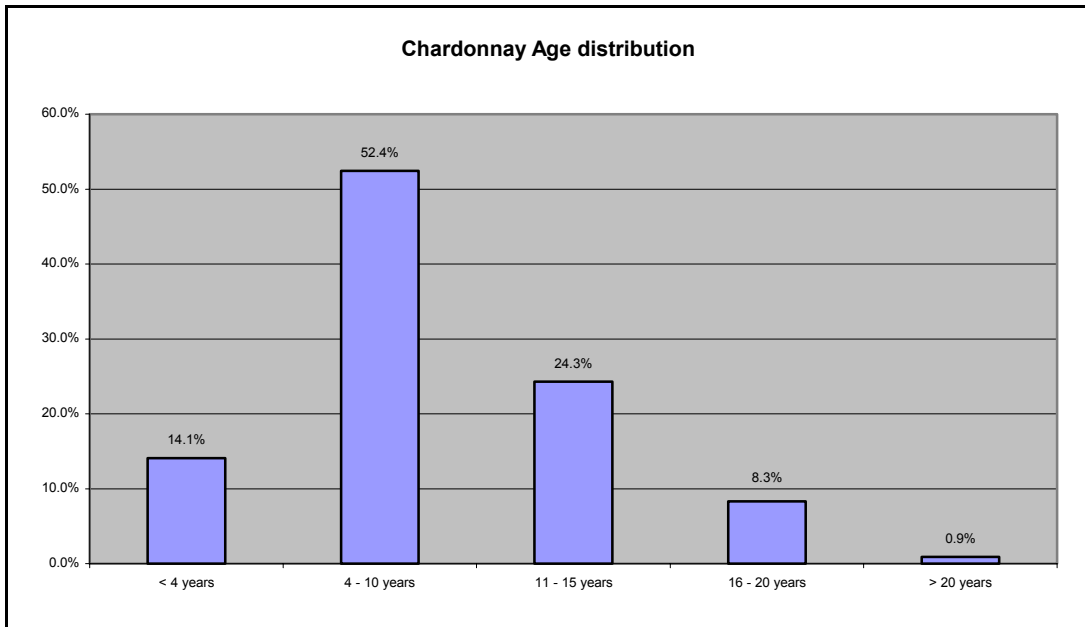
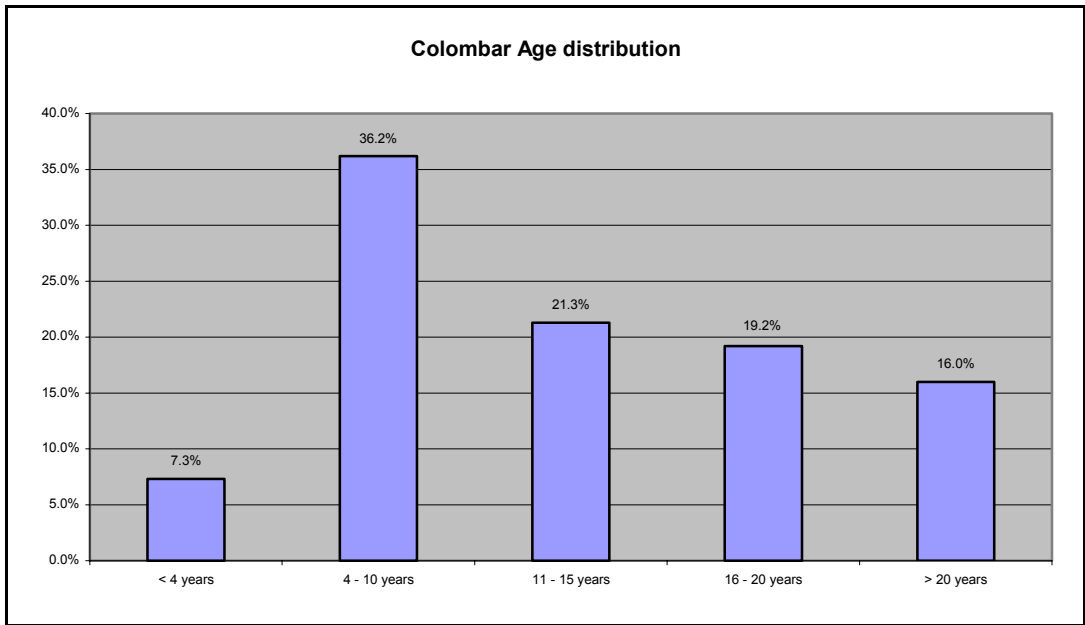
AGE OF VINES	HECTARES IN WINE REGION AS % OF TOTAL								
	TOTAL HECTARES	ORANGE RIVER	OLIFANTS RIVER	MALMESBURY	LITTLE KAROO	PAARL	ROBERTSON	STELLENBOSCH	WORCES-TER
< 4 Years	5.0	3.5	5.4	4.3	5.6	3.9	6.8	3.0	8.3
4 - 10 Years	16.3	34.1	21.9	9.8	24.3	8.0	19.0	6.8	17.6
11 - 15 Years	10.5	14.8	15.4	6.2	13.5	6.5	13.8	5.3	13.7
16 - 20 Years	11.4	10.2	11.6	9.9	15.1	10.2	14.4	8.8	14.5
> 20 Years	16.3	34.0	12.1	17.3	17.2	16.1	10.4	10.7	12.3
<b>Total white varieties</b>	<b>59.4</b>	<b>96.6</b>	<b>66.3</b>	<b>47.5</b>	<b>75.7</b>	<b>44.7</b>	<b>64.3</b>	<b>34.6</b>	<b>66.3</b>
< 4 Years	9.7	0.5	6.9	12.2	5.8	14.3	8.4	14.4	9.2
4 - 10 Years	21.3	2.4	24.0	28.7	13.7	25.0	22.0	29.3	19.0
11 - 15 Years	4.7	0.3	1.5	4.4	1.4	7.8	3.3	11.2	2.9
16 - 20 Years	1.6	0.2	0.4	1.4	0.6	3.0	0.8	4.7	0.3
> 20 Years	3.2	0.0	0.9	5.7	2.7	5.2	1.2	5.8	2.2
<b>Total red varieties</b>	<b>40.6</b>	<b>3.4</b>	<b>33.7</b>	<b>52.5</b>	<b>24.3</b>	<b>55.3</b>	<b>35.7</b>	<b>65.4</b>	<b>33.7</b>
< 4 Years	14.7	4.0	12.2	16.5	11.5	18.2	15.2	17.5	17.5
4 - 10 Years	37.6	36.5	45.9	38.6	38.0	33.1	41.1	36.1	36.5
11 - 15 Years	15.2	15.1	17.0	10.6	14.9	14.3	17.0	16.5	16.6
16 - 20 Years	13.0	10.4	12.0	11.3	15.7	13.2	15.2	13.5	14.9
> 20 Years	19.5	34.0	12.9	23.0	19.9	21.3	11.5	16.5	14.5
<b>Total white and red</b>	<b>100.0</b>	<b>100.0</b>	<b>100.0</b>	<b>100.0</b>	<b>100.0</b>	<b>100.0</b>	<b>100.0</b>	<b>100.0</b>	<b>100.0</b>

## AGE OF VINES PER VARIETY FOR 2003 - %

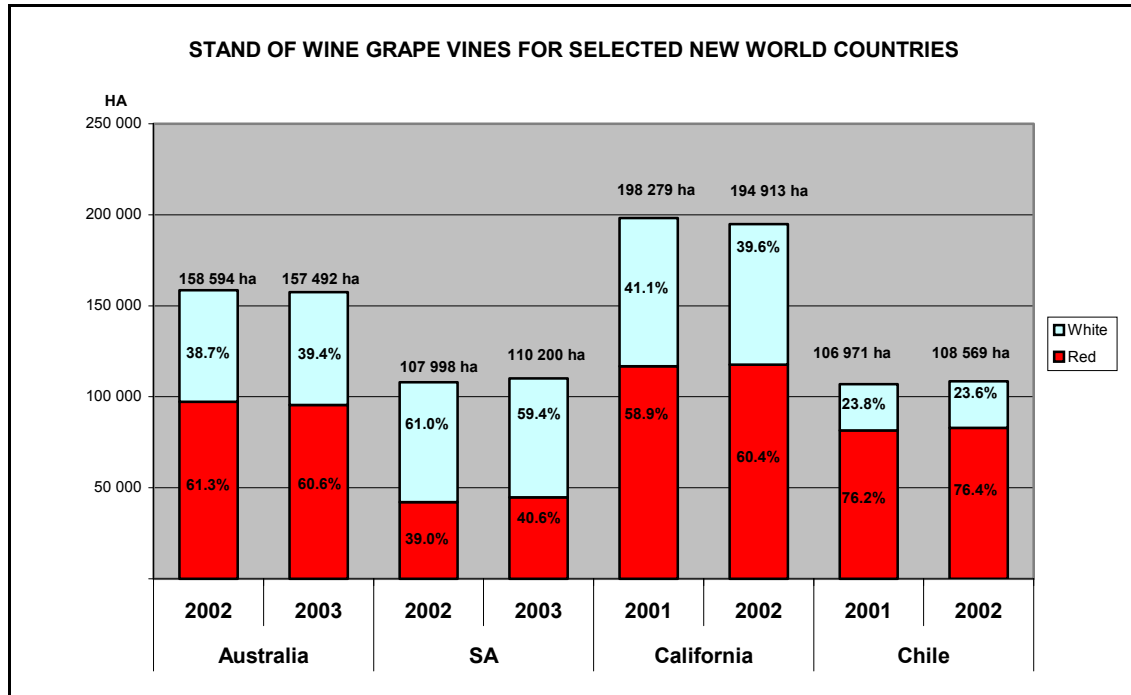








## STATUS OF WINE-GRAPE VINES FOR SELECTED NEW WORLD COUNTRIES



## TOTAL VINEYARD STATUS - COMPARISON BY VARIETY

VARIETY	Australia				South Africa			
	2002	% of total	2003	% of total	2002	% of total	2003	% of total
<b>RED</b>								
Cabernet Sauvignon	29 573	18.6%	28 871	18.3%	11 902	11.0%	13 160	11.9%
Shiraz	37 031	23.3%	37 016	23.5%	8 092	7.5%	8 724	7.9%
Merlot	10 101	6.4%	10 352	6.6%	6 332	5.9%	6 781	6.2%
Pinotage					6 912	6.4%	6 829	6.2%
Ruby Cabernet	2 817	1.8%	2 530	1.6%	2 393	2.2%	2 533	2.3%
Pinot Noir	4 414	2.8%	4 270	2.7%	536	0.5%	536	0.5%
<b>TOTAL</b>	<b>97 169</b>	<b>61.3%</b>	<b>95 491</b>	<b>60.6%</b>	<b>42 118</b>	<b>39.0%</b>	<b>44 731</b>	<b>40.6%</b>
<b>WHITE</b>								
Chardonnay	21 724	13.7%	24 138	15.3%	6 129	5.7%	6 689	6.1%
Sauvignon Blanc	2 914	1.8%	2 953	1.9%	6 450	6.0%	6 844	6.2%
Semillon	6 610	4.2%	6 283	4.0%	981	0.9%	997	0.9%
<b>TOTAL</b>	<b>61 425</b>	<b>38.7%</b>	<b>62 001</b>	<b>39.4%</b>	<b>65 880</b>	<b>61.0%</b>	<b>65 469</b>	<b>59.4%</b>
<b>GRAND TOTAL</b>	<b>158 594</b>	<b>100.0%</b>	<b>157 492</b>	<b>100.0%</b>	<b>107 998</b>	<b>100.0%</b>	<b>110 200</b>	<b>100.0%</b>

VARIETY	California				Chile			
	2001	% of total	2002	% of total	2001	% of total	2002	% of total
<b>RED</b>								
Cabernet Sauvignon	29 955	15.1%	30 778	15.8%	38 227	35.7%	39 261	36.2%
Merlot	20 781	10.5%	21 137	10.8%	12 887	12.0%	12 768	11.8%
Ruby Cabernet	3 332	1.7%	3 280	1.7%				
Pinot Noir	9 334	4.7%	9 671	5.0%	1 450	1.4%	1 434	1.3%
<b>TOTAL</b>	<b>116 746</b>	<b>58.9%</b>	<b>117 722</b>	<b>60.4%</b>	<b>81 539</b>	<b>76.2%</b>	<b>82 947</b>	<b>76.4%</b>
<b>WHITE</b>								
Chardonnay	41 758	21.1%	39 991	20.5%	7 567	7.1%	7 561	7.0%
Sauvignon Blanc	5 643	2.8%	5 888	3.0%	6 673	6.2%	7 041	6.5%
<b>TOTAL</b>	<b>81 533</b>	<b>41.1%</b>	<b>77 191</b>	<b>39.6%</b>	<b>25 432</b>	<b>23.8%</b>	<b>25 622</b>	<b>23.6%</b>
<b>GRAND TOTAL</b>	<b>198 279</b>	<b>100.0%</b>	<b>194 913</b>	<b>100.0%</b>	<b>106 971</b>	<b>100.0%</b>	<b>108 569</b>	<b>100.0%</b>