

STATISTICS OF WINE-GRAPE VINES

as on 30 November 2007



Compiled from annual returns submitted by
registered wine-growers

ENQUIRIES:

Fanie van Niekerk

Tel: (021) 807 5704
Fax: (021) 807 6001
E-mail: fanie@sawis.co.za

Bonita Floris

Tel: (021) 807 5714
Fax: (021) 807 6021
E-mail: floris@sawis.co.za
Webpage: www.sawis.co.za

STATUS OF ALL VINE TYPES

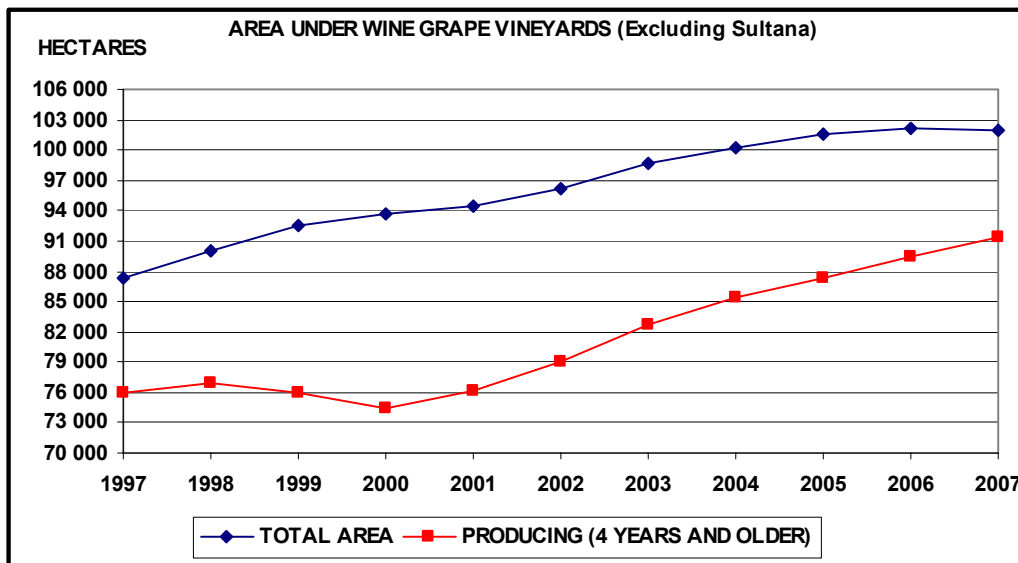
Vine Types	2005		2006		2007	
	Vines	Hectares	Vines	Hectares	Vines	Hectares
Wine grapes *	307 783 674	101 607	308 259 370	102 146	306 955 785	101 958
Sultana **	19 552 681	10 983	18 874 863	10 571	17 673 368	9 958
Table grapes **	25 627 105	13 066	26 089 495	13 296	26 226 597	13 435
Rootstocks	262 455	83	213 699	69	209 121	67
Currants ***	976 901	336	974 346	337	985 777	345
Total	354 202 816	126 075	354 411 773	126 419	352 050 648	125 763

* Includes Hanepoot also used as table grapes and for raisins.

** Only portion of production is utilised for production of wine.

*** For raisins only.

The area under wine-grapes has increased constantly from 1990 to 2006. In 2007, however, it decreased by 0.2% to reach 101 958 hectares.



AREA DISTRIBUTION OF WINE GRAPE VARIETIES

Wine grape varieties as % of total area

VARIETY	2000	2001	2002	2003	2004	2005	2006	2007
Chenin blanc	24.1	22.3	20.6	19.6	19.1	18.8	18.7	18.8
Colombar(d)	12.2	11.8	11.4	11.2	11.2	11.3	11.4	11.6
Chardonnay	6.4	6.3	6.4	6.8	7.3	7.8	8.0	8.7
Sauvignon blanc	5.7	6.1	6.7	6.9	6.9	7.5	8.2	8.1
Hanepoot *	4.3	3.8	3.4	3.1	2.8	2.6	2.5	2.4
Cape Riesling	2.3	1.9	1.6	1.4	1.2	1.1	1.0	1.1
Sémillon	1.1	1.0	1.0	1.0	1.0	1.1	1.1	1.0
Weisser Riesling	0.6	0.4	0.4	0.3	0.3	0.3	0.2	0.2
Other white varieties	7.1	5.5	4.7	4.3	4.1	3.9	3.9	3.9
Total white varieties	63.8	59.4	56.2	54.6	54.0	54.3	55.1	55.8
Cabernet Sauvignon	9.5	11.0	12.4	13.0	13.5	13.4	13.1	12.8
Shiraz	6.0	7.5	8.4	8.6	9.4	9.6	9.6	9.7
Merlot	5.2	6.0	6.6	6.7	7.0	6.8	6.7	6.6
Pinotage	7.0	7.3	7.2	6.8	6.7	6.4	6.2	6.0
Cinsaut	3.7	3.6	3.3	3.1	3.0	2.8	2.5	2.4
Ruby Cabernet	2.1	2.4	2.5	2.5	2.6	2.6	2.5	2.4
Cabernet Franc	0.6	0.6	0.8	0.9	0.9	1.0	1.0	1.0
Pinot noir	0.6	0.5	0.6	0.5	0.5	0.5	0.6	0.6
Other red varieties	1.5	1.7	2.0	3.2	2.4	2.6	2.7	2.7
Total red varieties	36.1	40.6	43.7	45.3	46.0	45.7	44.9	44.2
Total white and red	100.0	100.0	100.0	100.0	100.0	100.0	100.0	100.0
Total hectares	93 656	94 412	96 233	98 605	100 207	101 607	102 146	101 958
Sultana * (Hectares)	11 910	11 919	11 765	11 595	11 392	10 983	10 571	9 958

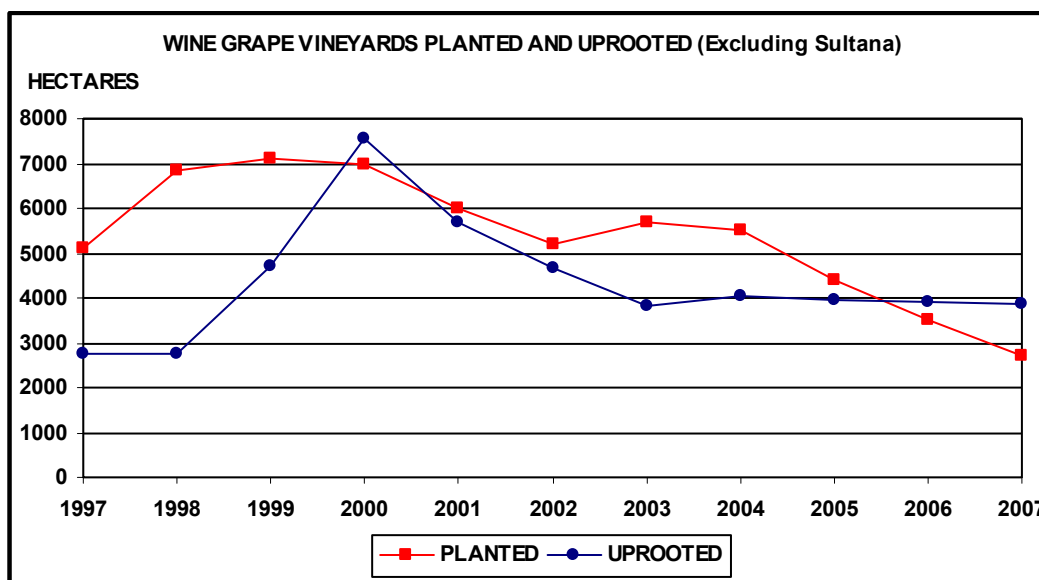
* Also utilised for raisins and as table grapes.

WINE-GRAPE VINES PLANTED AND UPROOTED FOR 2007

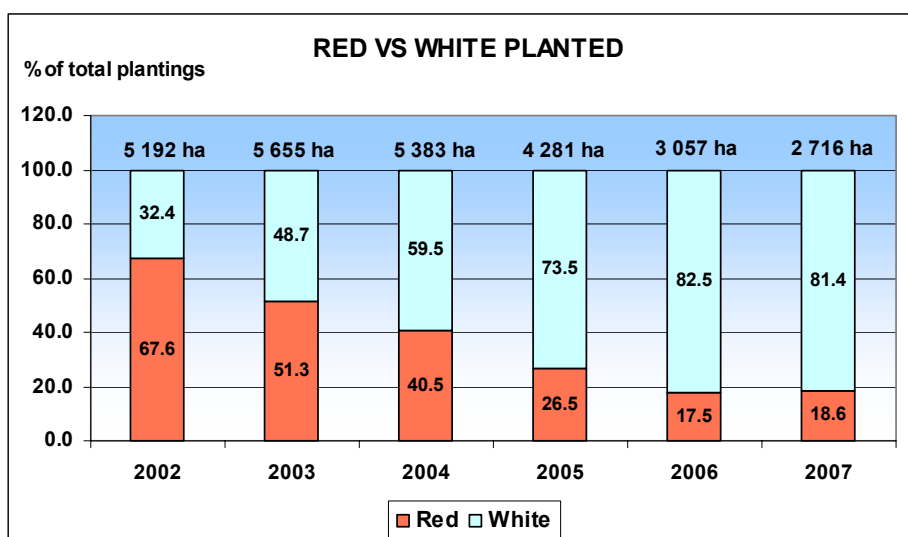
REGION	PLANTINGS		UPROOTINGS		* AMENDMENTS	
	VINES	HECTARES	VINES	HECTARES	VINES	HECTARES
ORANGE RIVER	346 512	161.01	437 177	189.80	57 925	18.14
OLIFANTS RIVER	707 493	271.84	928 742	326.89	72 218	26.44
MALMESBURY	446 038	192.58	1 548 584	587.20	207 876	77.75
LITTLE KAROO	312 759	97.62	563 649	171.93	188 568	68.37
PAARL	887 441	292.99	2 487 649	797.90	541 320	185.21
ROBERTSON	1 740 585	522.42	1 621 813	445.39	411 757	121.37
STELLENBOSCH	1 055 028	352.68	2 125 414	678.81	618 575	232.77
WORCESTER	2 534 794	824.67	2 440 979	681.55	721 533	244.54
TOTAL	8 030 650	2 715.81	12 154 007	3 879.47	2 819 772	974.59

* Due to recounting of vines as well as plantings and uprootings of previous years which are not taken into account.

Except for a 9.4% increase in 2003, plantings have been decreasing since 1999. Uprootings have remained at a similar level for the past 4 years. In 2007, 2 716 hectares were planted, while 3 879 hectares were uprooted.



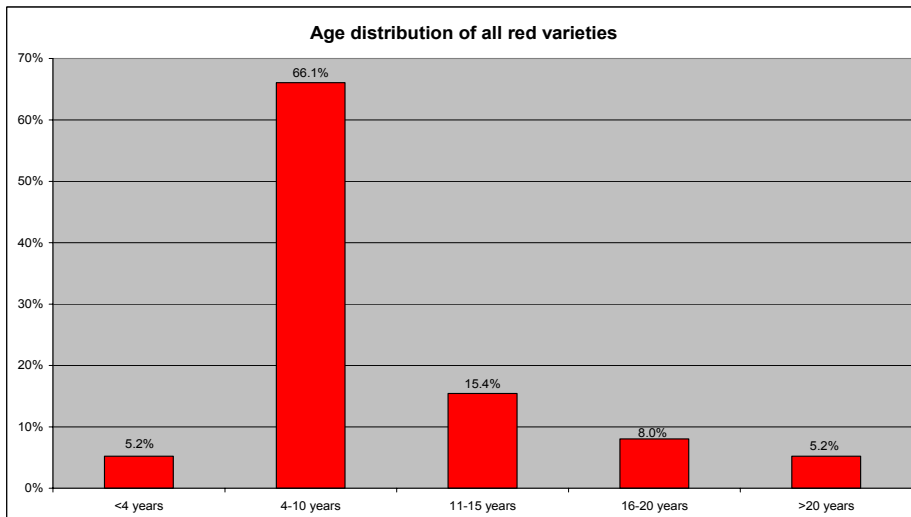
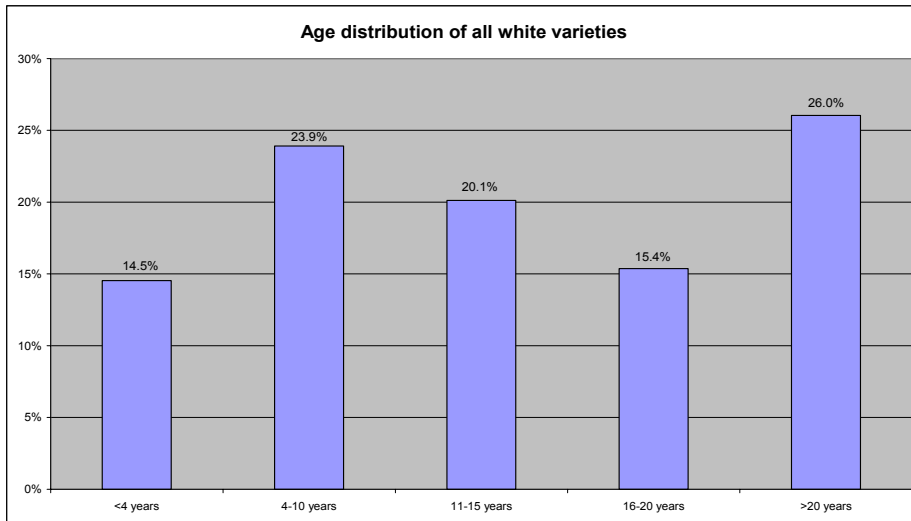
In 2004 plantings of white varieties exceeded that of red varieties for the first time since 1997; during 2007 about 81% of the plantings were white. Total plantings decreased by 11.2% in 2007 compared to 2006.



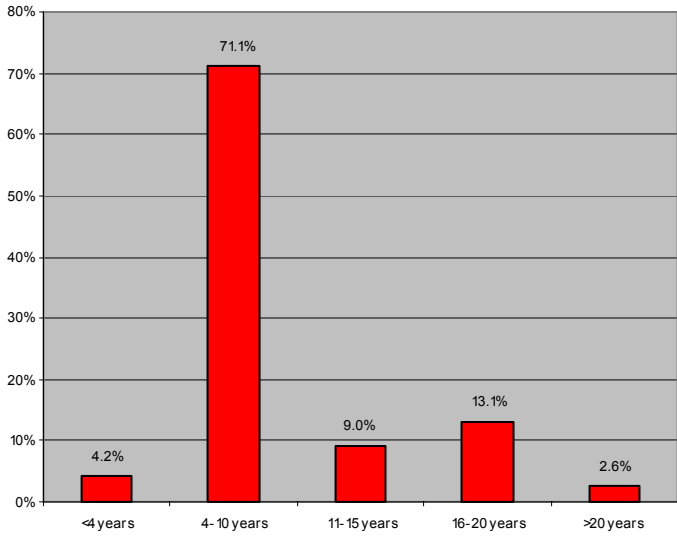
AGE OF VINES PER WINE REGION FOR 2007 - %

AGE OF VINES	HECTARES IN WINE REGION AS % OF TOTAL								
	TOTAL HECTARES	ORANGE RIVER	OLIFANTS RIVER	MALMES-BURY	LITTLE KAROO	PAARL	ROBERTSON	STELLENBOSCH	WORCESTER
< 4 Years	8.1	12.1	9.4	4.9	10.2	4.1	11.2	4.9	12.5
4 - 10 Years	13.4	33.9	16.0	10.1	16.1	9.4	14.8	8.5	15.4
11 - 15 Years	11.2	22.7	17.7	6.9	18.9	6.1	16.0	5.2	13.5
16 - 20 Years	8.6	13.0	11.1	6.1	11.2	6.7	10.3	5.0	11.2
> 20 Years	14.5	8.8	13.8	16.8	18.6	16.8	12.7	13.0	14.7
Total white varieties	55.8	90.6	68.0	44.8	75.0	43.0	65.0	36.5	67.4
< 4 Years	2.3	1.0	0.7	2.1	1.8	2.4	2.4	3.4	2.5
4 - 10 Years	29.2	6.3	25.2	35.9	17.1	36.1	24.7	38.3	23.3
11 - 15 Years	6.8	1.1	4.4	9.8	3.0	9.9	4.9	9.3	4.4
16 - 20 Years	3.6	0.8	1.0	3.7	1.0	5.2	2.0	8.2	1.5
> 20 Years	2.3	0.3	0.8	3.6	2.1	3.5	0.9	4.2	0.9
Total red varieties	44.2	9.4	32.0	55.2	25.0	57.0	35.0	63.5	32.6
< 4 Years	10.4	13.1	10.1	7.0	12.1	6.5	13.6	8.3	15.0
4 - 10 Years	42.5	40.2	41.1	46.0	33.2	45.5	39.5	46.7	38.7
11 - 15 Years	18.1	23.8	22.1	16.8	21.9	15.9	20.9	14.5	18.0
16 - 20 Years	12.1	13.8	12.0	9.8	12.1	11.8	12.3	13.3	12.7
> 20 Years	16.8	9.1	14.6	20.5	20.7	20.3	13.6	17.2	15.6
Total white and red	100.0	100.0	100.0	100.0	100.0	100.0	100.0	100.0	100.0

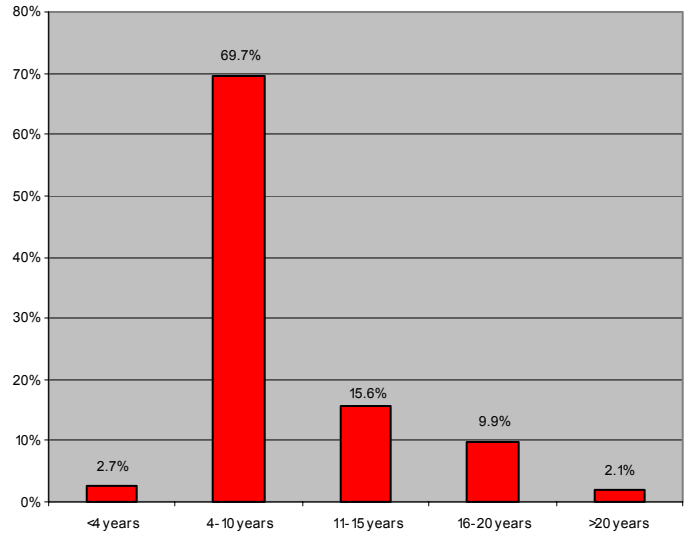
AGE OF VINES PER VARIETY FOR 2007 - %



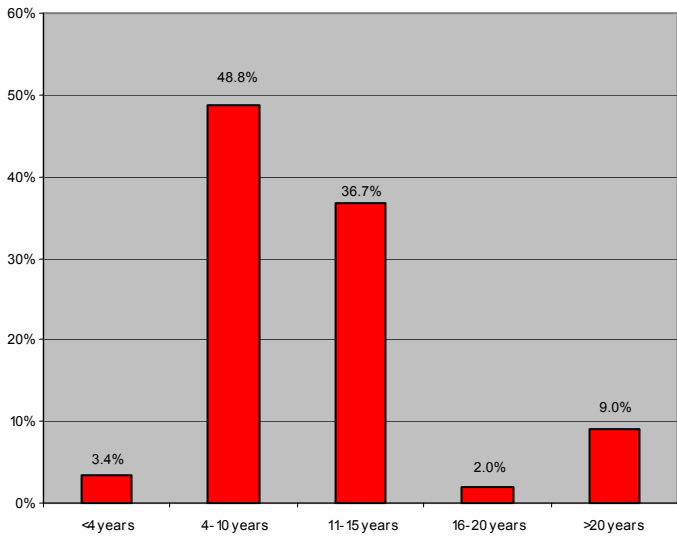
Cabernet Sauvignon Age distribution



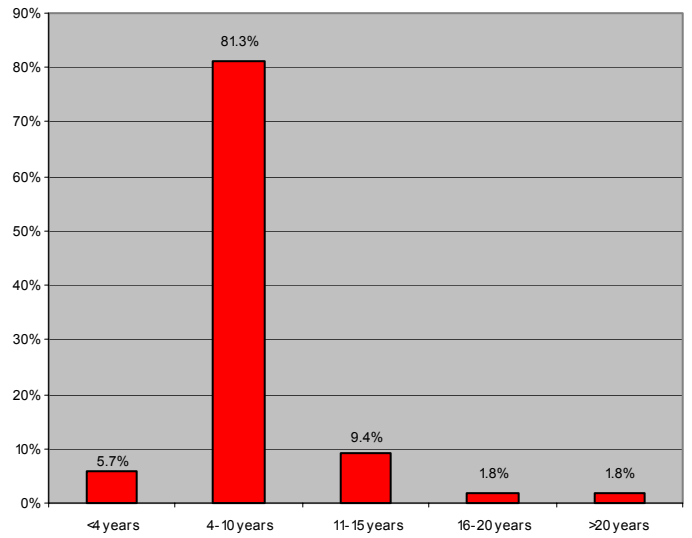
Merlot Age distribution



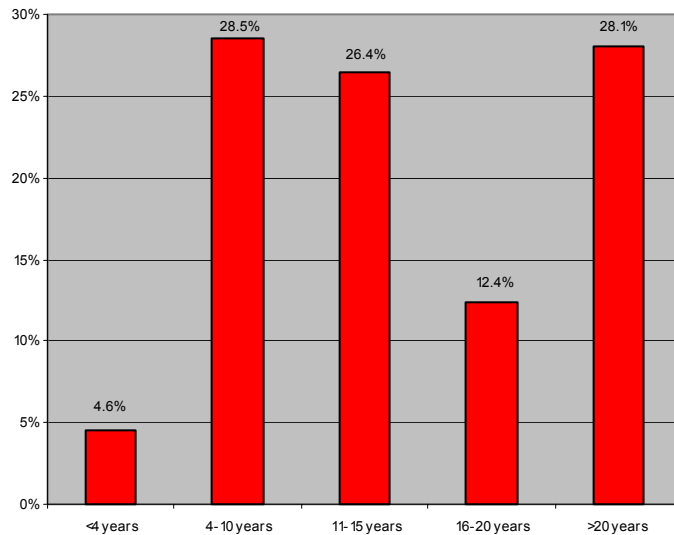
Pinotage Age distribution



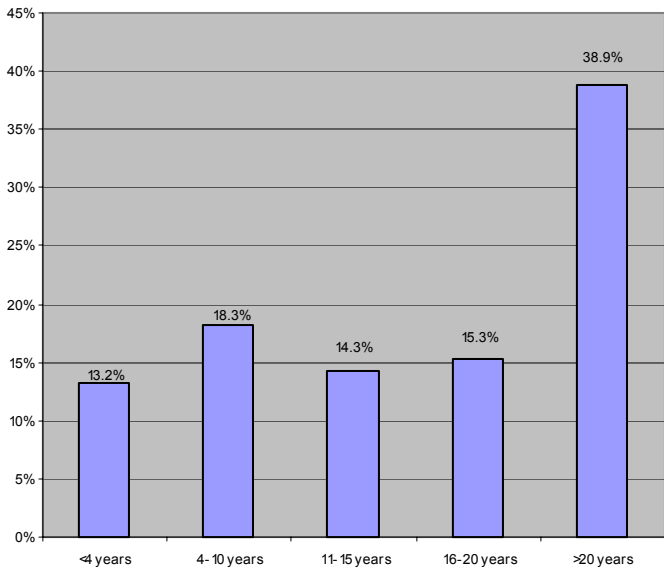
Shiraz Age distribution



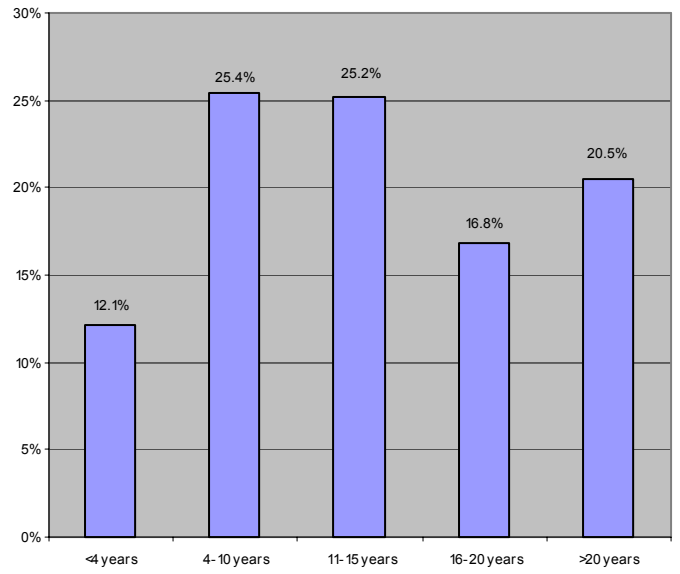
Cinsaut Age distribution



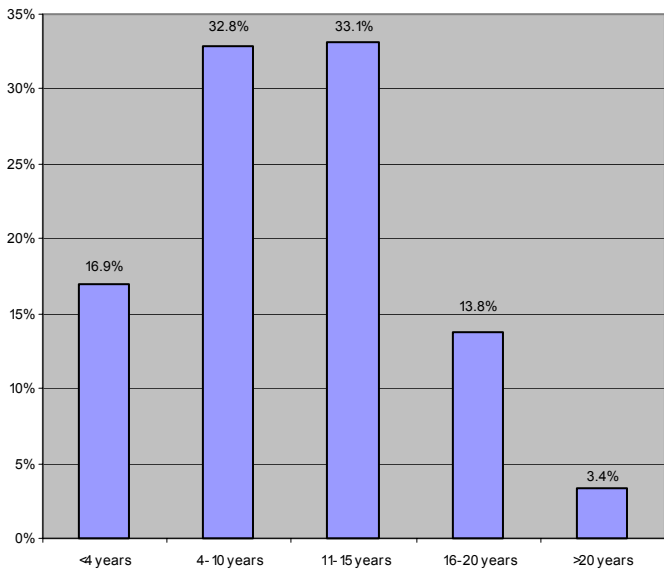
Chenin Blanc Age distribution



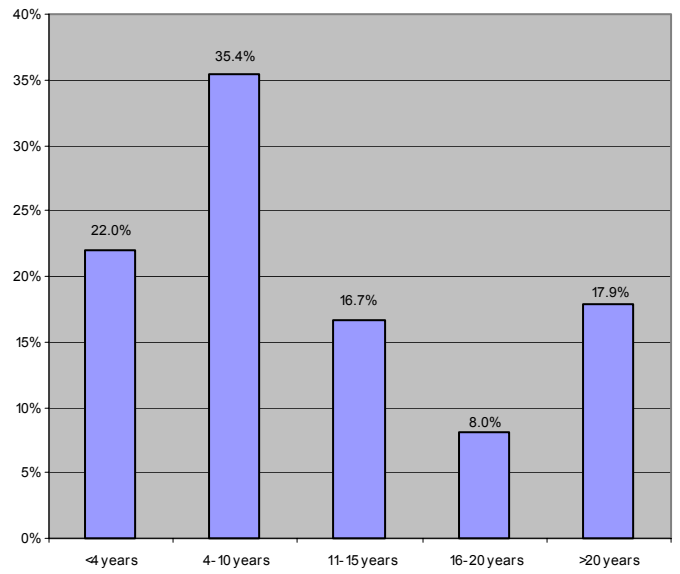
Colombar Age distribution



Chardonnay Age distribution



Sauvignon Blanc Age Distribution

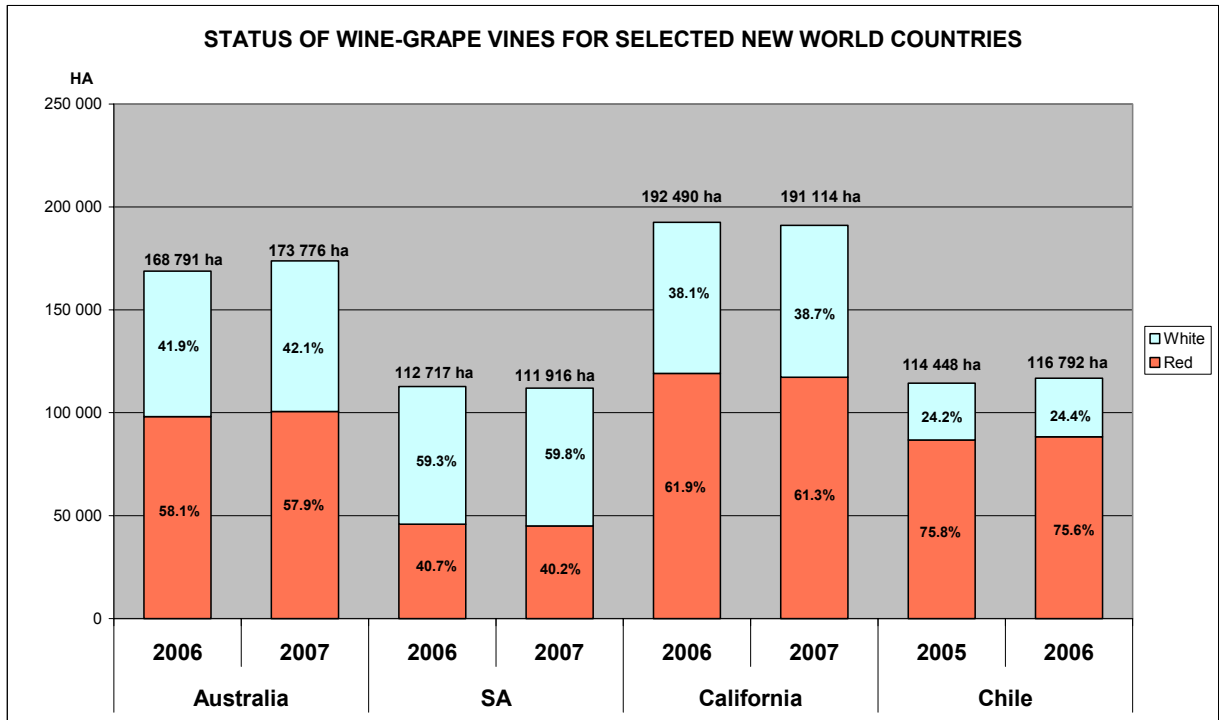


STATUS OF SELECTED WINE VARIETIES FROM 1997 TO 2007

Red varieties	1997	2002	Trend 1997-2002	2007	Trend 2002-2007
	Total hectares		%	Total hectares	%
ALICANTE BOUSCHET	1.5	12.5	818.3	13.1	104.2
BARBERA	7.6	29.1	383.3	48.0	164.7
CABERNET FRANC	314.5	751.7	239.0	1 019.5	135.6
CABERNET SAUVIGNON	4 988.2	11 902.2	238.6	13 006.1	109.3
CARIGNAN	75.9	77.6	102.2	78.1	100.6
CINSAUT	4 045.3	3 201.9	79.1	2 412.5	75.3
CORNIFESTO	0.4	1.9	447.6	1.5	81.9
DURIF	0.0	1.4	6 900.0	8.9	647.1
GAMAY NOIR	37.2	37.2	99.8	18.8	50.7
GRENACHE NOIR	40.3	40.8	101.3	113.9	278.9
HANEPOOT RED	9.8	4.6	46.8	3.0	64.7
MALBEC	20.7	323.5	1 562.1	441.2	136.4
MATARO	1.6	80.9	5 122.2	344.8	426.0
MERLOT	2 134.4	6 332.0	296.7	6 718.5	106.1
MEUNIER	2.5	4.1	163.6	6.2	150.2
MUSKADEL RED	484.6	337.4	69.6	319.2	94.6
NEBBIOLO	3.0	17.9	587.2	16.9	94.6
PETIT VERDOT	18.4	302.2	1 640.6	619.6	205.0
PINOT NOIR	401.5	535.6	133.4	648.4	121.1
PINOTAGE	3 831.5	6 912.2	180.4	6 138.6	88.8
PONTAK	10.4	7.0	68.0	4.4	62.2
ROOBERNET	19.1	120.8	633.2	146.9	121.6
RUBY CABERNET	913.2	2 392.7	262.0	2 469.2	103.2
SANGIOVESE	1.8	54.9	3 065.9	60.7	110.5
SEMILLON RED	13.4	2.4	17.9	8.3	345.4
SHIRAZ	1 329.2	8 091.7	608.8	9 856.1	121.8
SOUZAO	34.0	38.9	114.4	37.0	95.2
TANNAT	-	5.6	-	42.1	752.2
TEMPRANILLO	12.8	20.1	156.6	5.3	26.4
TINTA AMARELLA	0.9	0.9	98.9	31.3	3 436.3
TINTA BAROCCA	410.2	370.1	90.2	277.0	74.8
TINTA FRANCISCA	1.3	0.9	67.5	1.9	222.4
TOURIGA FRANCA	0.3	3.8	1 139.4	3.5	92.0
TOURIGA NACIONAL	17.9	52.3	292.7	79.0	151.1
ZINFANDEL	38.3	39.1	102.1	33.0	84.3

White varieties	1997	2002	Trend 1997-2002	2007	Trend 2002-2007
	Total hectares		%	Total hectares	%
BOURBOULENC	5.6	4.6	82.9	2.2	47.7
BUKETTRAUBE	368.1	225.4	61.2	91.0	40.4
CAPE RIESLING	3 274.7	1 525.4	46.6	982.1	64.4
CHARDONNAY	5 079.5	6 129.2	120.7	8 230.0	134.3
CHENEL	530.1	227.4	42.9	112.1	49.3
CHENIN BLANC	26 293.6	19 865.0	75.6	19 161.3	96.5
CINSAUT BLANC	99.3	18.5	18.7	7.9	42.8
CLAIRETTE BLANCHE	1 649.3	573.5	34.8	355.5	62.0
COLOMBAR	10 754.1	11 012.7	102.4	11 848.9	107.6
COLOMINO	17.3	8.7	50.1	5.0	58.3
EMERALD RIESLING	452.3	244.0	53.9	163.8	67.2
FERNAO PIRES	364.2	257.2	70.6	183.5	71.4
FRENCH GRAPE	3 512.2	865.3	24.6	427.1	49.4
GEWURZTRAMINER	290.8	186.6	64.2	131.6	70.5
GRACHEN	0.5	2.8	532.7	2.5	90.6
GRENACHE BLANC	27.6	19.0	68.6	35.6	187.7
HANEPOOT WHITE	5 178.8	3 263.7	63.0	2 427.0	74.4
HARSLEVELU	524.2	173.1	33.0	92.4	53.4
KANAAN (BELIES)	304.4	63.2	20.8	33.8	53.5
KERNER	41.6	9.5	22.9	2.1	22.4
MORIO MUSCAT	26.8	21.2	79.0	25.4	120.0
MUSCAT OTTONEL	40.8	23.5	57.7	18.4	78.2
MUSKADEL WHITE	802.9	689.0	85.8	663.9	96.4
NOUVELLE	1.9	3.6	190.5	343.8	9 496.1
PEDRO LUIS	142.8	20.3	14.2	5.0	24.8
PINOT BLANC	59.1	27.8	47.0	21.4	76.8
PINOT GRIS	145.6	87.0	59.8	92.7	106.5
RAISIN BLANC	981.7	216.2	22.0	109.3	50.6
SAUVIGNON BLANC	4 771.3	6 449.7	135.2	8 872.2	137.6
SCHONBURGER	3.4	0.6	17.7	0.3	52.5
SEMILLON	945.1	980.9	103.8	1 129.3	115.1
SYLVANER	9.0	2.6	29.2	1.1	41.4
THERONA	182.2	144.0	79.0	113.9	79.1
UGNI BLANC	248.4	99.3	40.0	69.0	69.5
VERDELHO	0.8	4.1	492.9	16.6	400.0
VILLARD BLANC	0.1	7.2	7 150.0	52.8	738.5
VOIGNIER	4.7	237.0	5 010.4	793.4	334.8
WEISSER RIESLING	743.9	346.5	46.6	239.9	69.2
WELDRA	74.8	35.8	47.9	18.3	51.0

STATUS OF WINE-GRAPE VINES FOR SELECTED NEW WORLD COUNTRIES (INCLUDES SULTANA IN ALL COUNTRIES)



TOTAL VINEYARD STATUS - COMPARISON BY VARIETY

VARIETY	Australia				South Africa			
	2006	% of total	2007	% of total	2006	% of total	2007	% of total
RED								
Cabernet Sauvignon	28 103	16.6%	27 909	16.1%	13 336	11.8%	13 006	11.6%
Shiraz	41 115	24.4%	43 417	25.0%	9 832	8.7%	9 856	8.8%
Merlot	10 593	6.3%	10 790	6.2%	6 863	6.1%	6 719	6.0%
Pinotage					6 297	5.6%	6 139	5.5%
Ruby Cabernet	1 468	0.9%	1 203	0.7%	2 599	2.3%	2 469	2.2%
Pinot Noir	4 254	2.5%	4 393	2.5%	577	0.5%	648	0.6%
TOTAL	98 111	58.1%	100 623	57.9%	45 837	40.7%	45 039	40.2%
WHITE								
Chardonnay	31 219	18.5%	32 151	18.5%	8 181	7.3%	8 230	7.4%
Sauvignon Blanc	4 661	2.8%	5 545	3.2%	8 406	7.5%	8 872	7.9%
Semillon	6 236	3.7%	6 752	3.9%	1 085	1.0%	1 129	1.0%
TOTAL	70 680	41.9%	73 153	42.1%	66 880	59.3%	66 877	59.8%
GRAND TOTAL	168 791	100.0%	173 776	100.0%	112 717	100.0%	111 916	100.0%

VARIETY	California				Chile			
	2006	% of total	2007	% of total	2005	% of total	2006	% of total
RED								
Cabernet Sauvignon	31 269	16.2%	30 627	16.0%	40 441	35.3%	40 789	34.9%
Merlot	21 621	11.2%	20 161	10.5%	13 142	11.5%	13 368	11.4%
Ruby Cabernet	2 795	1.5%	2 588	1.4%				
Pinot Noir	11 145	5.8%	11 822	6.2%	1 361	1.2%	1 382	1.2%
TOTAL	119 096	61.9%	117 207	61.3%	86 790	75.8%	88 325	75.6%
WHITE								
Chardonnay	38 513	20.0%	38 184	20.0%	8 156	7.1%	8 548	7.3%
Sauvignon Blanc	6 292	3.3%	6 224	3.3%	8 379	7.3%	8 697	7.4%
TOTAL	73 394	38.1%	73 907	38.7%	27 658	24.2%	28 467	24.4%
GRAND TOTAL	192 490	100.0%	191 114	100.0%	114 448	100.0%	116 792	100.0%