



STATISTICS OF WINE-GRAPE VINES

as on 30 November 2006



Compiled from annual returns submitted by
registered wine-growers

ENQUIRIES:

Fanie van Niekerk

Tel: (021) 807 5704
Fax: (021) 807 6001
E-mail: fanie@sawis.co.za

Bonita Floris

Tel: (021) 807 5714
Fax: (021) 807 6021
E-mail: floris@sawis.co.za
Webpage: www.sawis.co.za

STATUS OF ALL VINE TYPES

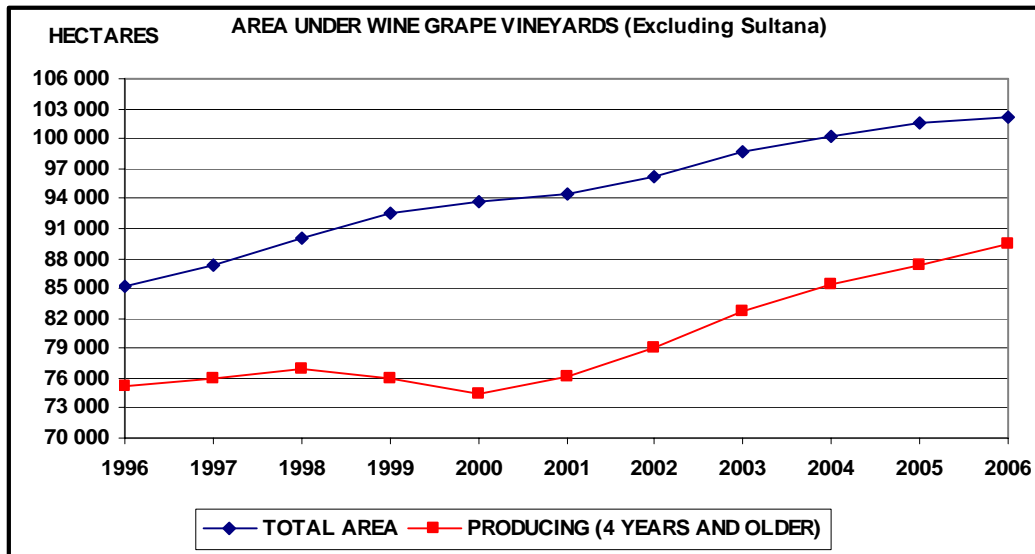
Vine Types	2004		2005		2006	
	Vines	Hectares	Vines	Hectares	Vines	Hectares
Wine grapes *	305 009 754	100 207	307 783 674	101 607	308 259 370	102 146
Sultana **	20 349 375	11 392	19 552 681	10 983	18 874 863	10 571
Table grapes **	25 061 341	12 700	25 627 105	13 066	26 089 495	13 296
Rootstocks	282 742	96	262 455	83	213 699	69
Currants ***	1 043 613	354	976 901	336	974 346	337
Total	351 746 825	124 749	354 202 816	126 075	354 411 773	126 419

* Includes Hanepoot also used as table grapes and for raisins.

** Only portion of production is utilised for production of wine.

*** For raisins only.

The area under wine-grapes has increased constantly from 1990. The area under wine-grapes is 102 146 hectares in 2006, an increase of 0.5% from 2005.



AREA DISTRIBUTION OF WINE GRAPE VARIETIES

Wine grape varieties as % of total area

VARIETY	1999	2000	2001	2002	2003	2004	2005	2006
Chenin blanc	26.8	24.1	22.3	20.6	19.6	19.1	18.8	18.7
Colombar(d)	12.6	12.2	11.8	11.4	11.2	11.2	11.3	11.4
Chardonnay	6.4	6.4	6.3	6.4	6.8	7.3	7.8	8.0
Sauvignon blanc	5.7	5.7	6.1	6.7	6.9	6.9	7.5	8.2
Hanepoot *	4.8	4.3	3.8	3.4	3.1	2.8	2.6	2.5
Cape Riesling	3.0	2.3	1.9	1.6	1.4	1.2	1.1	1.0
Sémillon	1.1	1.1	1.0	1.0	1.0	1.0	1.1	1.1
Weisser Riesling	0.7	0.6	0.4	0.4	0.3	0.3	0.3	0.2
Other white varieties	9.5	7.1	5.5	4.7	4.3	4.1	3.9	3.9
Total white varieties	70.7	63.8	59.4	56.2	54.6	54.0	54.3	55.1
Cabernet Sauvignon	7.5	9.5	11.0	12.4	13.0	13.5	13.4	13.1
Shiraz	3.7	6.0	7.5	8.4	8.6	9.4	9.6	9.6
Merlot	4.1	5.2	6.0	6.6	6.7	7.0	6.8	6.7
Pinotage	6.2	7.0	7.3	7.2	6.8	6.7	6.4	6.2
Cinsaut	4.1	3.7	3.6	3.3	3.1	3.0	2.8	2.5
Ruby Cabernet	1.7	2.1	2.4	2.5	2.5	2.6	2.6	2.5
Cabernet franc	0.3	0.6	0.6	0.8	0.9	0.9	1.0	1.0
Pinot noir	0.5	0.6	0.5	0.6	0.5	0.5	0.5	0.6
Other red varieties	1.5	1.5	1.7	2.0	3.2	2.4	2.6	2.7
Total red varieties	29.5	36.1	40.6	43.7	45.3	46.0	45.7	44.9
Total white and red	100.0	100.0	100.0	100.0	100.0	100.0	100.0	100.0
Total hectares	92 601	93 656	94 412	96 233	98 605	100 207	101 607	102 146
Sultana * (Hectares)	11 578	11 910	11 919	11 765	11 595	11 392	10 983	10 571

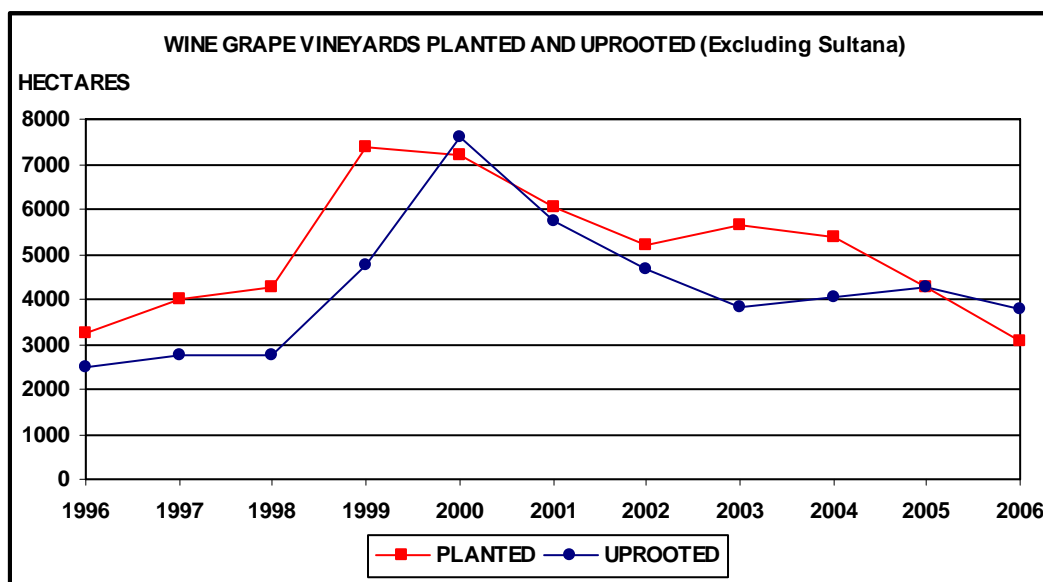
* Also utilised for raisins and as table grapes.

WINE-GRAPE VINES PLANTED AND UPROOTED FOR 2006

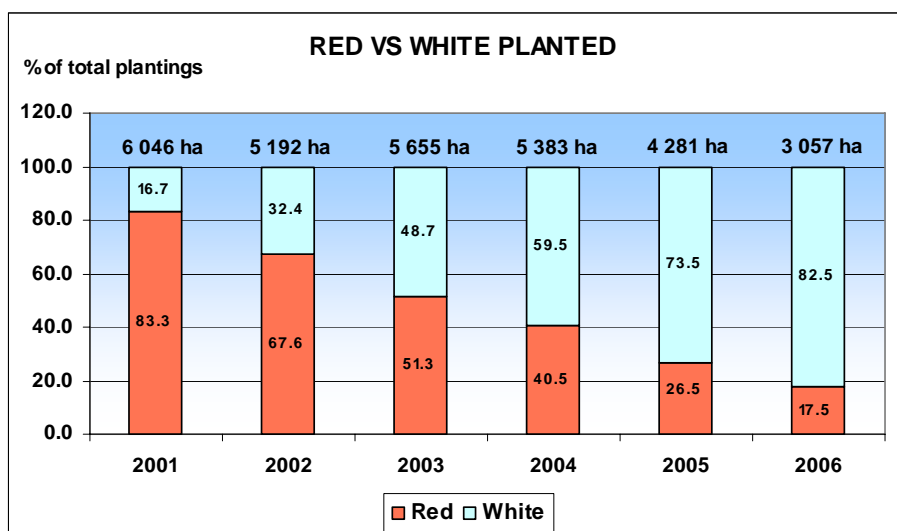
REGION	PLANTINGS		UPROOTINGS		* AMENDMENTS	
	VINES	HECTARES	VINES	HECTARES	VINES	HECTARES
ORANGE RIVER	407 579	192.75	355 136	166.72	393 407	186.93
OLIFANTS RIVER	799 676	308.78	1 289 472	435.12	352 056	138.87
MALMESBURY	625 072	250.23	1 292 851	498.35	379 871	118.54
LITTLE KAROO	261 552	92.58	367 630	105.94	156 334	49.34
PAARL	753 356	256.54	2 329 507	744.61	524 864	192.15
ROBERTSON	1 989 702	612.30	1 740 345	477.50	269 877	94.92
STELLENBOSCH	915 279	316.09	2 167 370	689.42	587 026	207.71
WORCESTER	3 153 532	1 027.27	2 459 066	671.74	907 890	284.19
TOTAL	8 905 748	3 056.54	12 001 377	3 789.40	3 571 325	1 272.65

* Due to recounting of vines as well as plantings and uprootings of previous years which are not taken into account.

From 1990 to 1995 plantings and uprootings were in balance with each other. From 1996 to 1999 more vines were planted than uprooted. In 2006 3 057 hectares were planted while 3 789 hectares were uprooted.



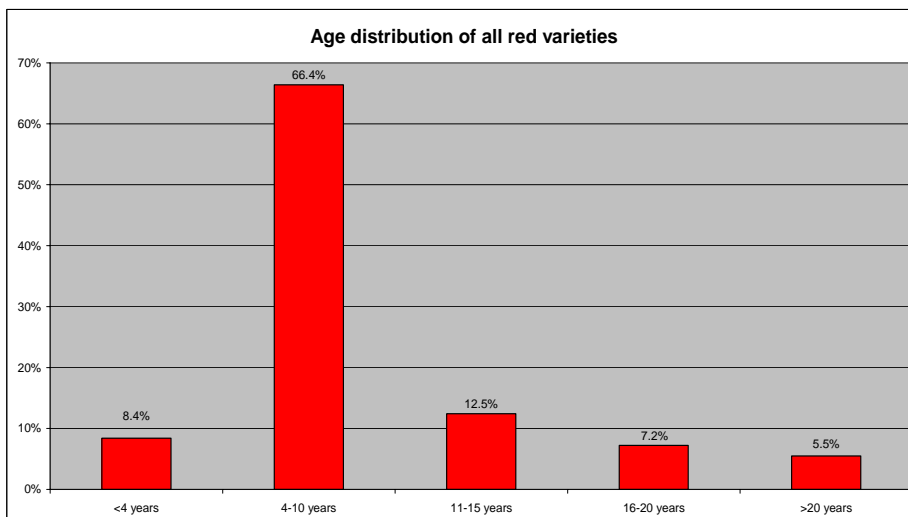
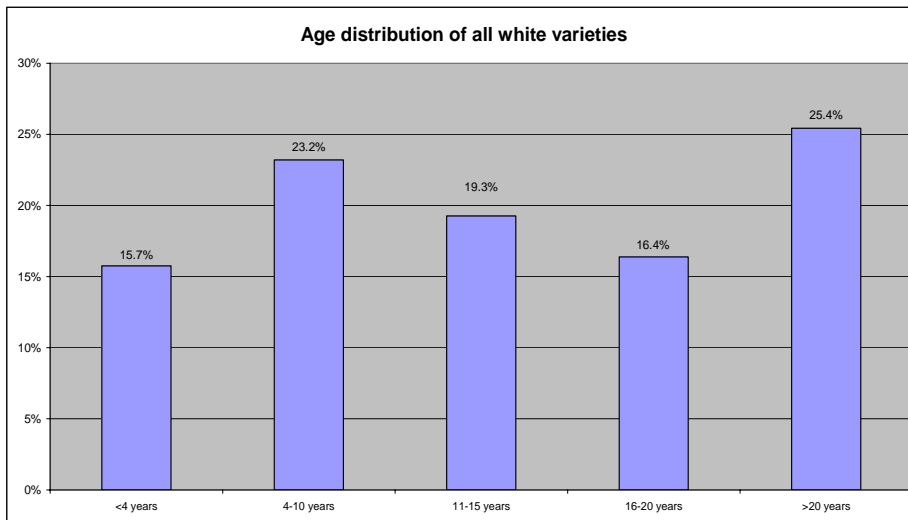
During 2006 about 83% of plantings were white and 17% red. From 1996 to 2003 plantings of red varieties increased predominantly in contrast with those of white varieties. In 2005 the plantings of red varieties, however, decreased by 48.0% and with a further 95.2% in 2006. Total plantings decreased by 28.6% in 2006 from 2005.



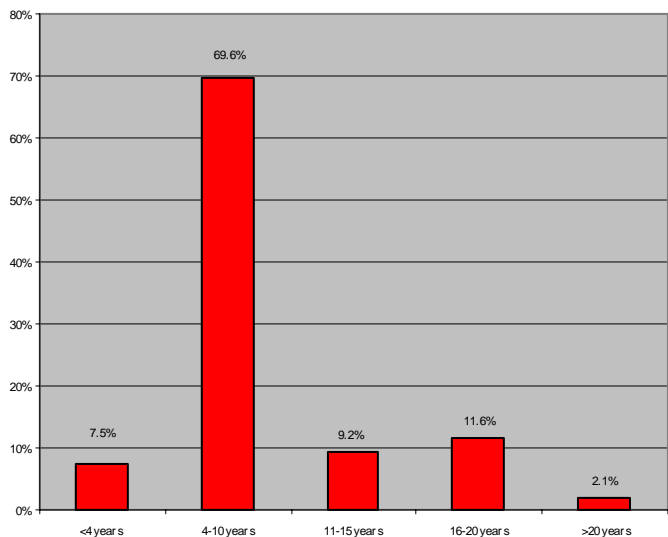
AGE OF VINES PER WINE REGION FOR 2006 - %

AGE OF VINES	HECTARES IN WINE REGION AS % OF TOTAL								
	TOTAL HECTARES	ORANGE RIVER	OLIFANTS RIVER	MALMESBURY	LITTLE KAROO	PAARL	ROBERTSON	STELLENBOSCH	WORCES-TER
< 4 Years	8.7	11.7	10.6	5.9	10.7	4.6	11.8	5.4	13.0
4 - 10 Years	12.8	40.8	15.4	8.8	17.2	8.5	13.7	7.4	14.5
11 - 15 Years	10.6	15.4	17.7	6.5	16.7	5.5	16.2	4.6	13.9
16 - 20 Years	9.0	13.5	10.7	6.5	12.9	7.3	10.7	5.7	11.7
> 20 Years	14.0	8.3	12.4	17.1	17.5	16.8	11.9	12.8	13.5
Total white varieties	55.1	89.7	66.7	44.8	75.0	42.7	64.4	35.9	66.6
< 4 Years	3.8	1.3	1.5	4.4	2.3	4.6	3.7	4.9	3.7
4 - 10 Years	29.8	6.9	27.5	36.2	17.3	36.0	25.7	38.2	23.8
11 - 15 Years	5.6	1.1	2.7	7.5	2.1	8.0	3.8	8.8	3.5
16 - 20 Years	3.2	0.8	0.8	3.0	0.9	4.8	1.4	8.1	1.3
> 20 Years	2.5	0.3	0.8	4.0	2.4	3.9	1.0	4.0	1.1
Total red varieties	44.9	10.3	33.3	55.2	25.0	57.3	35.6	64.1	33.4
< 4 Years	12.5	12.9	12.0	10.3	13.0	9.2	15.5	10.4	16.7
4 - 10 Years	42.6	47.7	42.9	44.9	34.5	44.6	39.4	45.6	38.3
11 - 15 Years	16.2	16.5	20.4	14.1	18.8	13.5	20.0	13.4	17.5
16 - 20 Years	12.3	14.3	11.5	9.6	13.8	12.0	12.1	13.8	13.0
> 20 Years	16.5	8.6	13.2	21.1	19.9	20.7	12.9	16.8	14.6
Total white and red	100.0	100.0	100.0	100.0	100.0	100.0	100.0	100.0	100.0

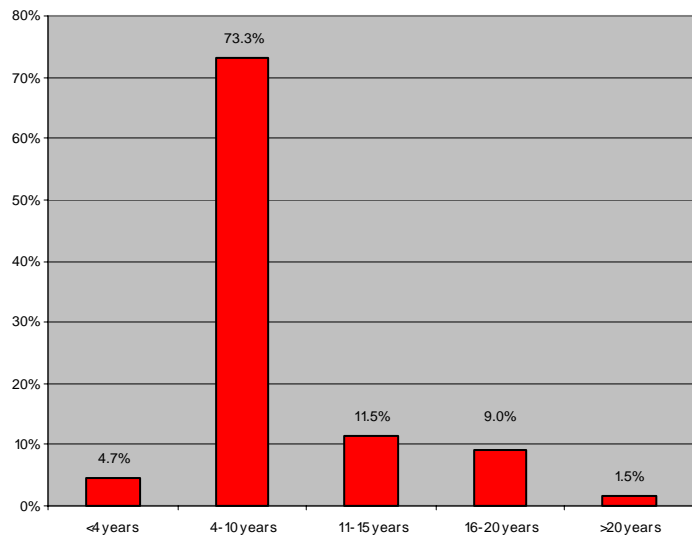
AGE OF VINES PER VARIETY FOR 2006 - %



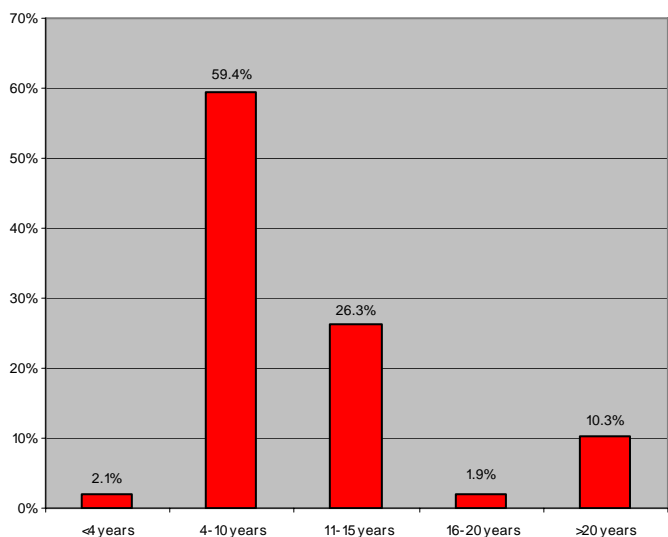
Cabernet Sauvignon Age distribution



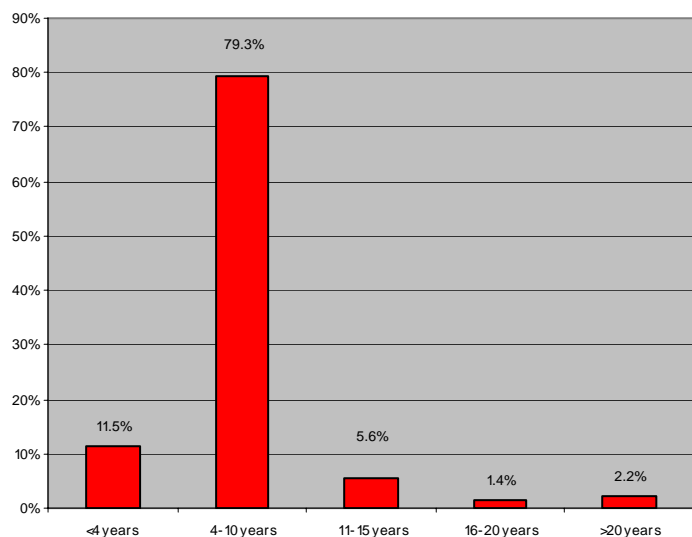
Merlot Age distribution



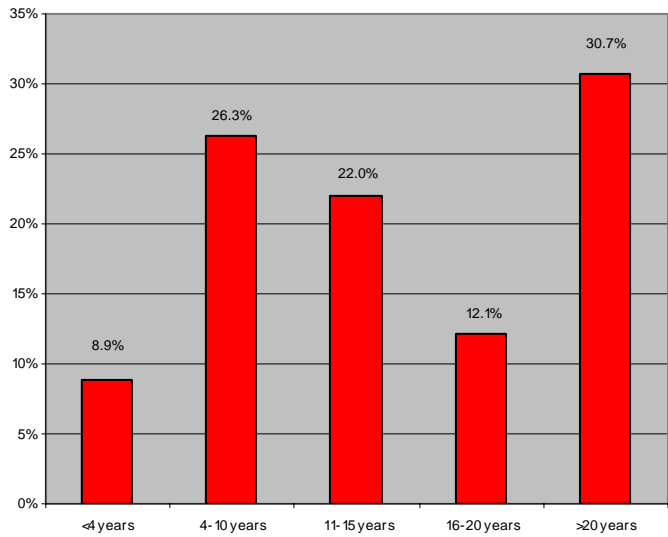
Pinotage Age distribution



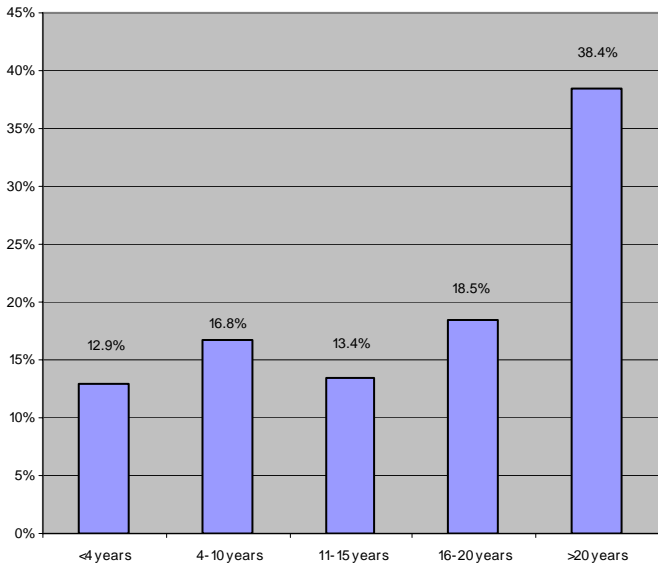
Shiraz Age distribution



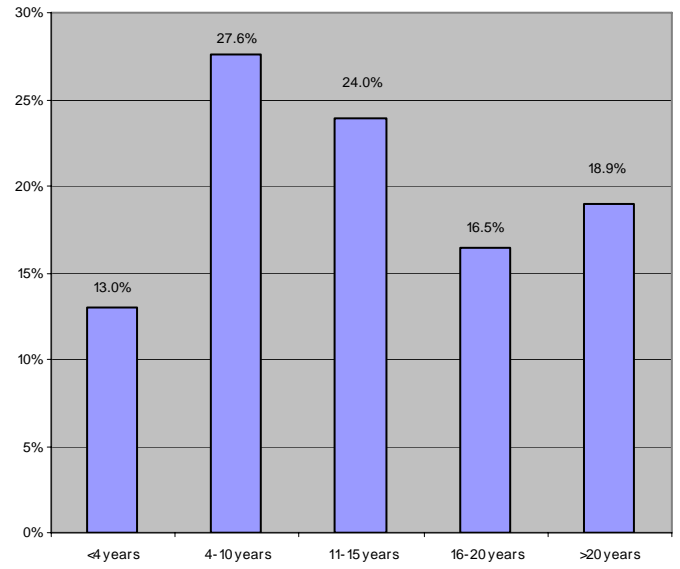
Cinsaut Age distribution



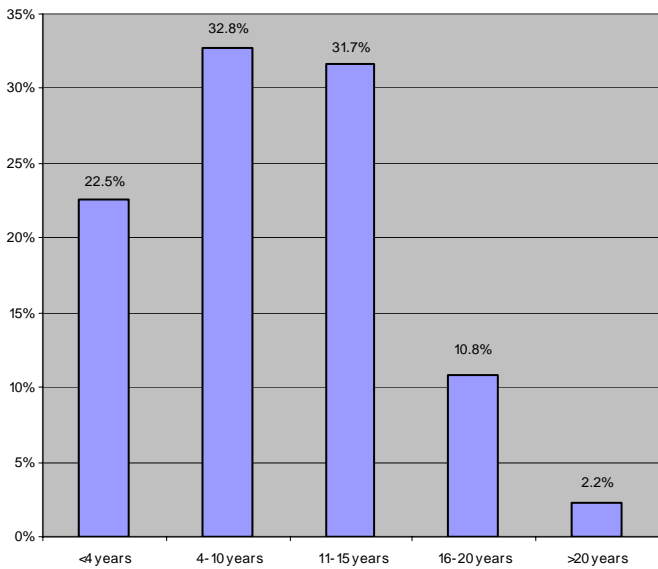
Chenin Blanc Age distribution



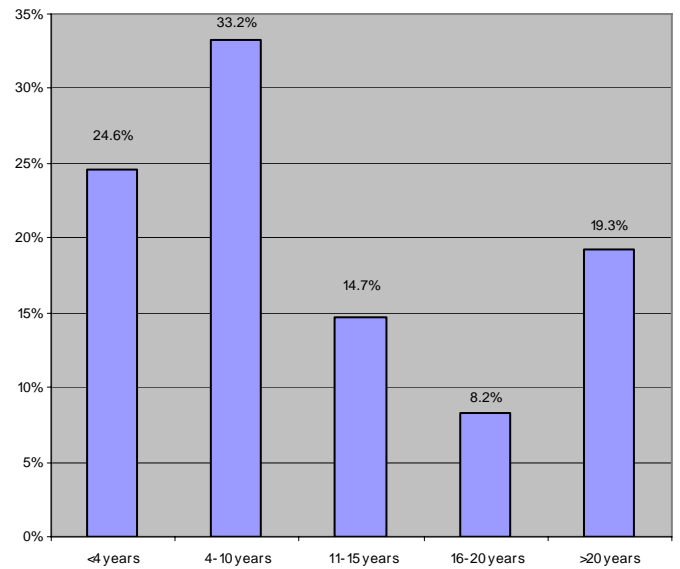
Colombar Age distribution



Chardonnay Age distribution



Sauvignon Blanc Age Distribution

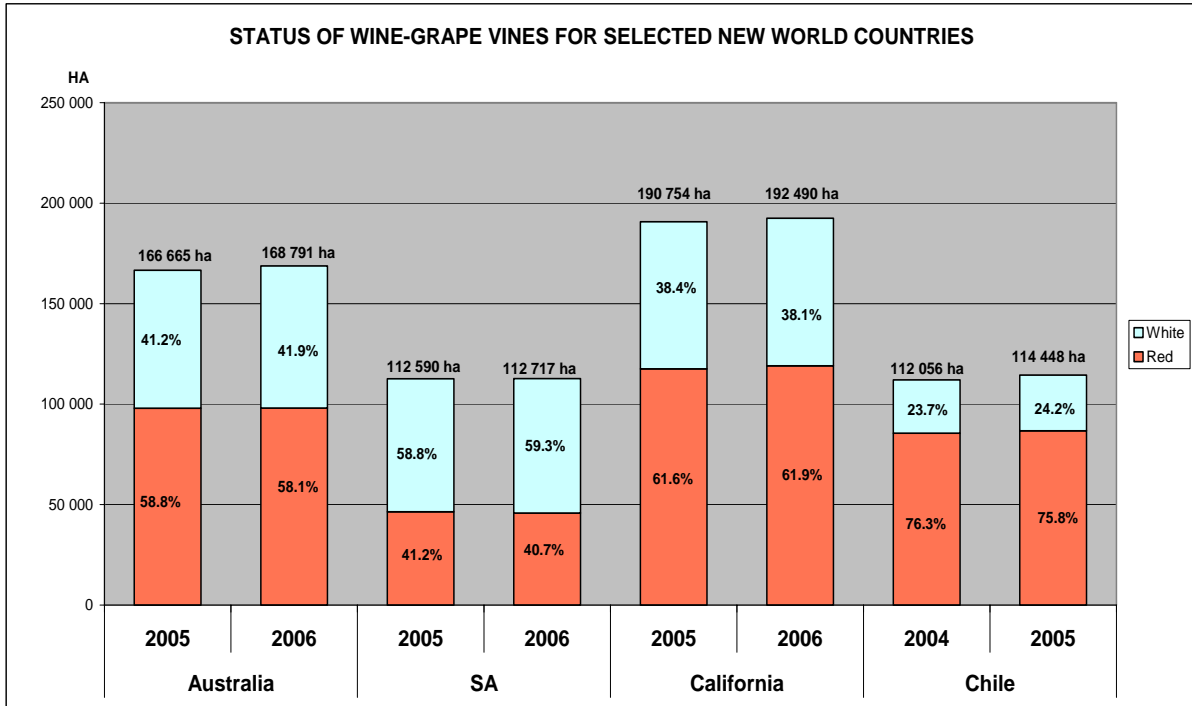


STATUS OF SELECTED WINE VARIETIES FROM 1997 TO 2006

Red varieties	1997	2002	Trend 1997-2002	2006	Trend 2002-2006
	Total hectares		%	Total hectares	%
ALICANTE BOUSCHET	1.5	12.5	818.3	13.1	104.2
BARBERA	7.6	29.1	383.3	41.1	141.0
CABERNET FRANC	314.5	751.7	239.0	1 022.3	136.0
CABERNET SAUVIGNON	4 988.2	11 902.2	238.6	13 336.4	112.0
CARIGNAN	75.9	77.6	102.2	72.2	93.1
CINSAUT	4 045.3	3 201.9	79.1	2 595.2	81.1
GAMAY NOIR	37.2	37.2	99.8	24.1	64.8
GRENACHE NOIR	40.3	40.8	101.3	89.3	218.6
HANEPOOT RED	9.8	4.6	46.8	3.0	64.7
MALBEC	20.7	323.5	1 562.1	442.4	136.7
MATARO	1.6	80.9	5 122.2	321.8	397.7
MERLOT	2 134.4	6 332.0	296.7	6 862.7	108.4
MEUNIER	2.5	4.1	163.6	6.2	150.5
MUSKADEL RED	484.6	337.4	69.6	297.0	88.0
NEBBIOLO	3.0	17.9	587.2	17.4	97.4
PETIT VERDOT	18.4	302.2	1 640.6	594.0	196.6
PINOT NOIR	401.5	535.6	133.4	577.0	107.7
PINOTAGE	3 831.5	6 912.2	180.4	6 296.9	91.1
ROOBERNET	19.1	120.8	633.2	146.4	121.2
RUBY CABERNET	913.2	2 392.7	262.0	2 598.7	108.6
SANGIOVESE	1.8	54.9	3 065.9	61.7	112.4
SEMILLON RED	13.4	2.4	17.9	8.3	345.4
SHIRAZ	1 329.2	8 091.7	608.8	9 832.3	121.5
SOUZAO	32.0	38.9	121.5	39.3	101.1
TANNAT	-	5.6	-	37.9	678.0
TEMPRANILLO	12.8	20.1	156.6	37.1	184.8
TINTA BAROCCA	410.2	370.1	90.2	322.2	87.1
TOURIGA NACIONAL	17.9	52.3	292.7	79.5	152.0
ZINFANDEL	38.3	39.1	102.1	36.6	93.6

White varieties	1997	2002	Trend 1997-2002	2006	Trend 2002-2006
	Total hectares		%	Total hectares	%
BUKETTRAUBE	368.1	225.4	61.2	117.7	52.2
CAPE RIESLING	3 274.7	1 525.4	46.6	1 059.1	69.4
CHARDONNAY	5 079.5	6 129.2	120.7	8 180.5	133.5
CHENEL	530.1	227.4	42.9	132.2	58.1
CHENIN BLANC	26 293.6	19 865.0	75.6	19 122.0	96.3
CINSAUT BLANC	99.3	18.5	18.7	7.9	42.8
CLAIRETTE BLANCHE	1 649.3	573.5	34.8	374.6	65.3
COLOMBAR	10 754.1	11 012.7	102.4	11 667.9	105.9
EMERALD RIESLING	452.3	244.0	53.9	175.4	71.9
FERNAO PIRES	364.2	257.2	70.6	208.4	81.1
FRENCH	3 512.2	865.3	24.6	481.6	55.7
FURMINT	48.6	16.0	32.9	0.6	3.8
GEWURZTRAMINER	290.8	186.6	64.2	146.0	78.2
GRENACHE BLANC	27.6	19.0	68.6	35.3	186.2
HANEPOOT WHITE	5 178.8	3 263.7	63.0	2 533.4	77.6
HARSLEVELU	524.2	173.1	33.0	99.3	57.4
KANAAN (BELIES)	304.4	63.2	20.8	42.3	67.0
KERNER	41.6	9.5	22.9	2.1	22.4
MORIO MUSCAT	26.8	21.2	79.0	25.6	120.7
MUSCAT OTTONEL	40.8	23.5	57.7	18.4	78.2
MUSKADEL WHITE	802.9	689.0	85.8	654.0	94.9
NOUVELLE	1.9	3.6	190.5	257.0	7 098.1
PEDRO LUIS	142.8	20.3	14.2	5.8	28.5
PINOT BLANC	59.1	27.8	47.0	21.4	77.0
PINOT GRIS	145.6	87.0	59.8	81.2	93.3
RAISIN BLANC	981.7	216.2	22.0	115.2	53.3
SAUVIGNON BLANC	4 771.3	6 449.7	135.2	8 406.4	130.3
SEMILLON	945.1	980.9	103.8	1 085.0	110.6
THERONA	182.2	144.0	79.0	124.0	86.1
UGNI BLANC	248.4	99.3	40.0	67.0	67.4
VIOGNIER	4.7	237.0	5 010.4	728.1	307.2
WEISSER RIESLING	743.9	346.5	46.6	249.4	72.0
WELDRA	74.8	35.8	47.9	18.9	52.8

STATUS OF WINE-GRAPE VINES FOR SELECTED NEW WORLD COUNTRIES (INCLUDES SULTANA IN ALL COUNTRIES)



TOTAL VINEYARD STATUS - COMPARISON BY VARIETY

VARIETY	Australia				South Africa			
	2005	% of total	2006	% of total	2005	% of total	2006	% of total
RED								
Cabernet Sauvignon	28 621	17.2%	28 103	16.6%	13 572	12.1%	13 336	11.8%
Shiraz	40 508	24.3%	41 115	24.4%	9 794	8.7%	9 832	8.7%
Merlot	10 816	6.5%	10 593	6.3%	6 942	6.2%	6 863	6.1%
Pinotage					6 494	5.8%	6 297	5.6%
Ruby Cabernet	1 681	1.0%	1 468	0.9%	2 648	2.4%	2 599	2.3%
Pinot Noir	4 231	2.5%	4 254	2.5%	535	0.5%	577	0.5%
TOTAL	98 033	58.8%	98 111	58.1%	46 393	41.2%	45 837	40.7%
WHITE								
Chardonnay	30 507	18.3%	31 219	18.5%	7 927	7.0%	8 181	7.3%
Sauvignon Blanc	4 152	2.5%	4 661	2.8%	7 661	6.8%	8 406	7.5%
Semillon	6 282	3.8%	6 236	3.7%	1 070	1.0%	1 085	1.0%
TOTAL	68 632	41.2%	70 680	41.9%	66 197	58.8%	66 880	59.3%
GRAND TOTAL	166 665	100.0%	168 791	100.0%	112 590	100.0%	112 717	100.0%

VARIETY	California				Chile			
	2005	% of total	2006	% of total	2004	% of total	2005	% of total
RED								
Cabernet Sauvignon	31 097	16.3%	31 269	16.2%	40 086	35.8%	40 441	35.3%
Merlot	21 975	11.5%	21 621	11.2%	12 942	11.5%	13 142	11.5%
Ruby Cabernet	2 738	1.4%	2 795	1.5%				
Pinot Noir	9 899	5.2%	11 145	5.8%	1 440	1.3%	1 361	1.2%
TOTAL	117 540	61.6%	119 096	61.9%	85 506	76.3%	86 790	75.8%
WHITE								
Chardonnay	38 484	20.2%	38 513	20.0%	7 722	6.9%	8 156	7.1%
Sauvignon Blanc	6 262	3.3%	6 292	3.3%	7 741	6.9%	8 379	7.3%
TOTAL	73 214	38.4%	73 394	38.1%	26 550	23.7%	27 658	24.2%
GRAND TOTAL	190 754	100.0%	192 490	100.0%	112 056	100.0%	114 448	100.0%