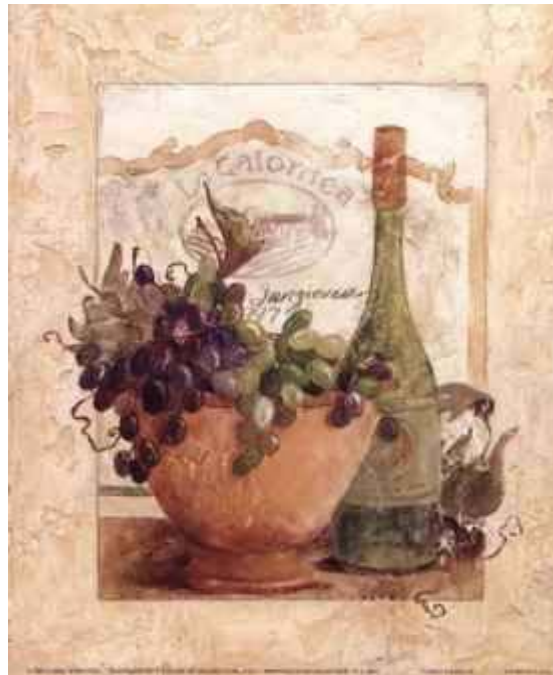




STATISTICS OF WINE-GRAPE VINES

as on 30 November 2005



Compiled from annual returns submitted by
registered wine-growers

ENQUIRIES:

Fanie van Niekerk

Tel: (021) 807 5704
Fax: (021) 807 6001
E-mail: fanie@sawis.co.za

Bonita Floris

Tel: (021) 807 5714
Fax: (021) 807 6021
E-mail: floris@sawis.co.za
Webpage: www.sawis.co.za

STATUS OF ALL VINE TYPES

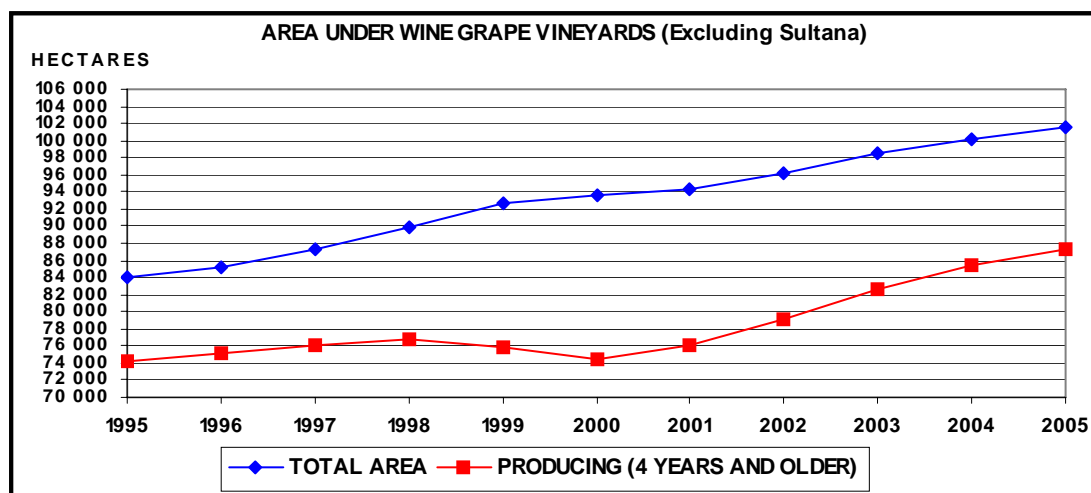
Vine Types	2003		2004		2005	
	Vines	Hectares	Vines	Hectares	Vines	Hectares
Wine grapes *	300 844 872	98 605	305 009 754	100 207	307 783 674	101 607
Sultana **	20 756 164	11 595	20 349 375	11 392	19 552 681	10 983
Table grapes **	24 492 832	13 354	25 061 341	12 700	25 627 105	13 066
Rootstocks	275 227	98	282 742	96	262 455	83
Currants ***	1 065 208	356	1 043 613	354	976 901	336
Total	347 434 303	124 008	351 746 825	124 749	354 202 816	126 075

* Includes Hanepoot also used as table grapes and for raisins.

** Only portion of production is utilised for production of wine.

*** For raisins only.

The area under wine-grapes has increased constantly from 1990. The area under wine-grapes is 101 607 hectares in 2005, an increase of 1.4% from 2004.



AREA DISTRIBUTION OF WINE GRAPE VARIETIES

Wine grape varieties as % of total area

VARIETY	1998	1999	2000	2001	2002	2003	2004	2005
Chenin blanc	28.7	26.8	24.1	22.3	20.6	19.6	19.1	18.8
Colombar(d)	12.5	12.6	12.2	11.8	11.4	11.2	11.2	11.3
Chardonnay	6.4	6.4	6.4	6.3	6.4	6.8	7.3	7.8
Sauvignon blanc	5.5	5.7	5.7	6.1	6.7	6.9	6.9	7.5
Hanepoot *	5.5	4.8	4.3	3.8	3.4	3.1	2.8	2.6
Cape Riesling	3.5	3.0	2.3	1.9	1.6	1.4	1.2	1.1
Sémillon	1.1	1.1	1.1	1.0	1.0	1.0	1.0	1.1
Weisser Riesling	0.8	0.7	0.6	0.4	0.4	0.3	0.3	0.3
Other white varieties	11.3	9.5	7.1	5.5	4.7	4.3	4.1	3.9
Total white varieties	75.3	70.7	63.8	59.4	56.2	54.6	54.0	54.3
Cabernet Sauvignon	6.3	7.5	9.5	11.0	12.4	13.0	13.5	13.4
Shiraz	2.2	3.7	6.0	7.5	8.4	8.6	9.4	9.6
Merlot	2.9	4.1	5.2	6.0	6.6	6.7	7.0	6.8
Pinotage	5.3	6.2	7.0	7.3	7.2	6.8	6.7	6.4
Cinsaut noir	4.4	4.1	3.7	3.6	3.3	3.1	3.0	2.8
Ruby Cabernet	1.3	1.7	2.1	2.4	2.5	2.5	2.6	2.6
Cabernet franc	0.3	0.3	0.6	0.6	0.8	0.9	0.9	1.0
Pinot noir	0.4	0.5	0.6	0.5	0.6	0.5	0.5	0.5
Other red varieties	1.5	1.5	1.5	1.7	2.0	3.2	2.4	2.6
Total red varieties	24.7	29.5	36.1	40.6	43.7	45.3	46.0	45.7
Total white and red	100.0	100.0	100.0	100.0	100.0	100.0	100.0	100.0
Total hectares	89 935	92 601	93 656	94 412	96 233	98 605	100 207	101 607
Sultana * (Hectares)	11 044	11 578	11 910	11 919	11 765	11 595	11 392	10 983

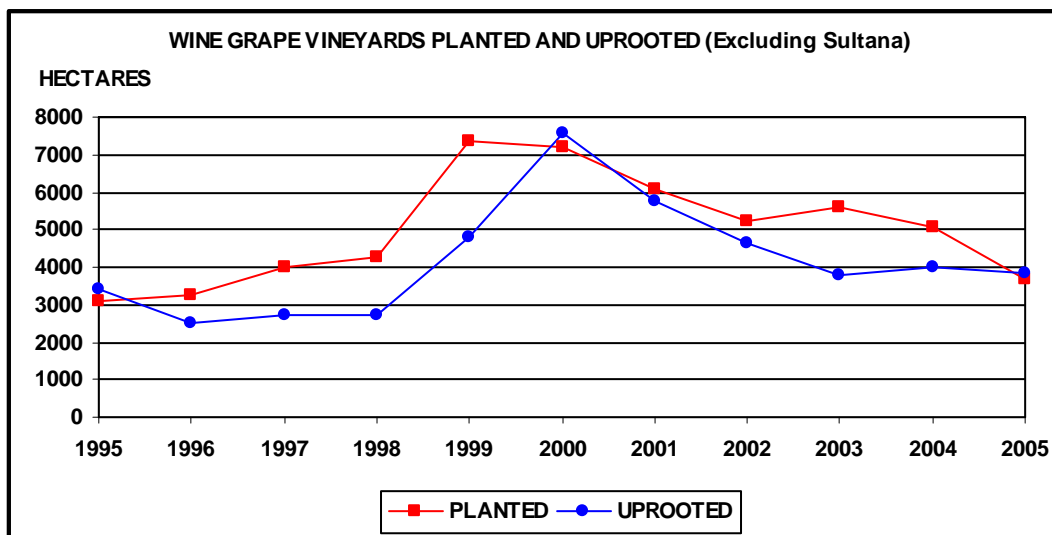
* Also utilised for raisins and as table grapes.

WINE-GRAPE VINES PLANTED AND UPROOTED FOR 2005

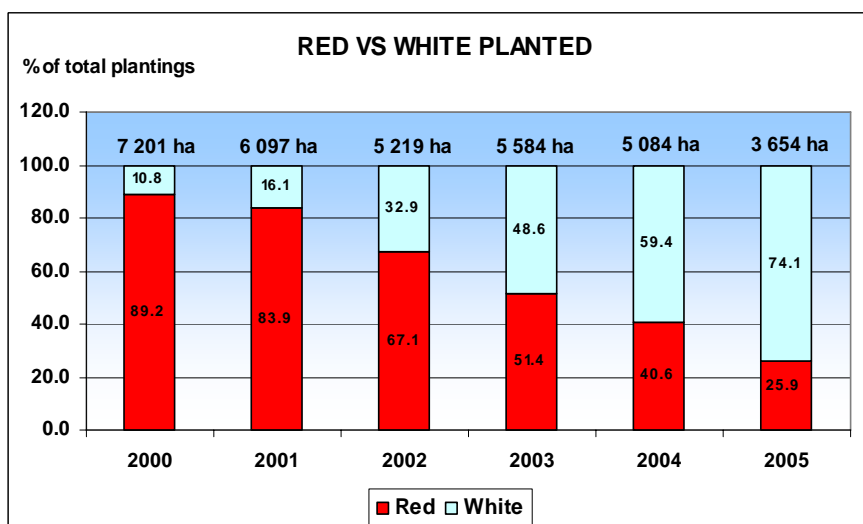
REGION	PLANTINGS		UPROOTINGS		* AMENDMENTS	
	VINES	HECTARES	VINES	HECTARES	VINES	HECTARES
ORANGE RIVER	505 635	239.44	444 371	203.91	312 404	149.99
OLIFANTS RIVER	803 203	305.66	1 126 443	377.54	502 829	203.00
MALMESBURY	980 726	410.61	1 495 071	589.67	663 720	231.47
LITTLE KAROO	395 942	135.36	487 395	146.38	4 096	1.54
PAARL	1 148 546	392.34	2 669 729	843.39	855 291	294.79
ROBERTSON	2 004 625	602.09	1 431 861	391.97	457 609	149.07
STELLENBOSCH	1 631 173	552.05	2 419 463	733.71	976 997	329.47
WORCESTER	3 089 058	1 016.35	2 036 528	527.01	552 927	199.75
TOTAL	10 558 908	3 653.90	12 110 861	3 813.58	4 325 873	1 559.08

* Due to recounting of vines as well as plantings and uprootings of previous years which are not taken into account.

From 1990 to 1995 plantings and uprootings were in balance with each other. From 1996 to 1999 more vines were planted than uprooted. In 2005 3 654 hectares were planted while 3 814 hectares were uprooted.



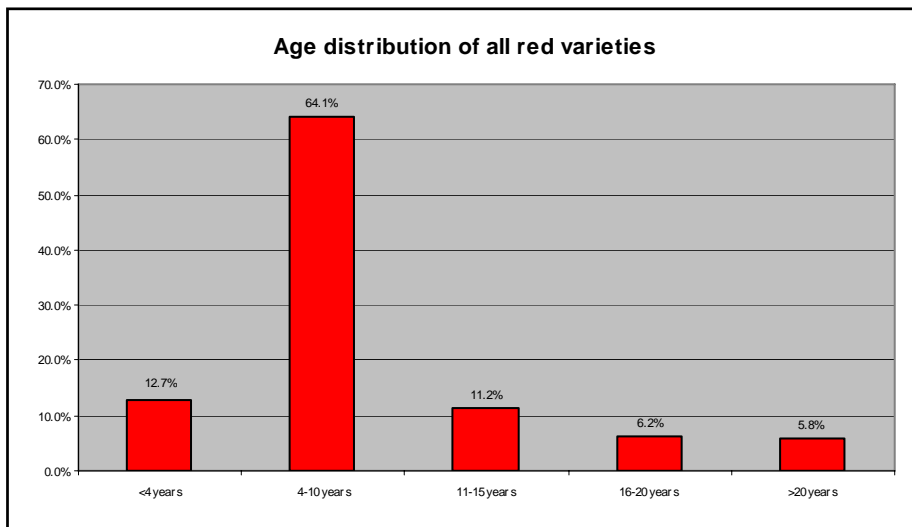
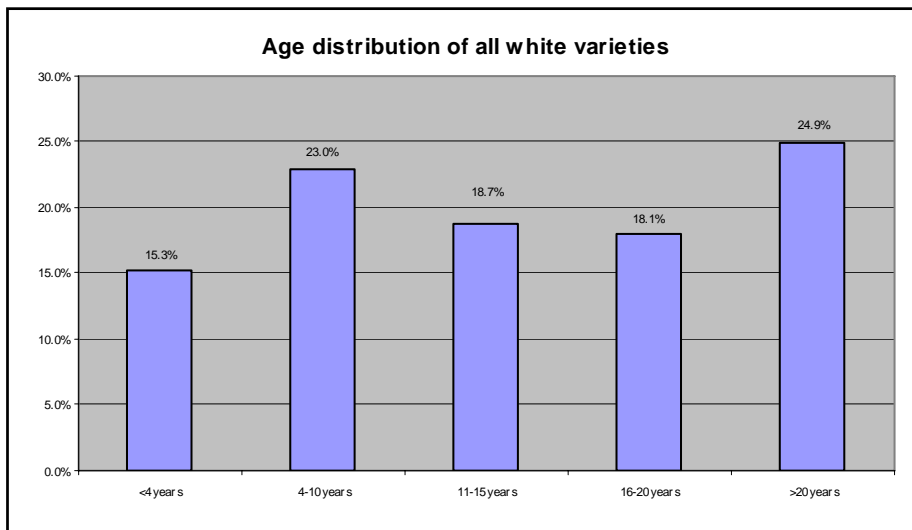
During 2005 about 74% of plantings were white and 26% red. From 1996 to 2003 plantings of red varieties increased predominantly in contrast with those of white varieties. In 2004 the plantings of red varieties, however, decreased by 28.1% and with a further 54.2% in 2005. Total plantings decreased by 28.1% in 2005 from 2004.

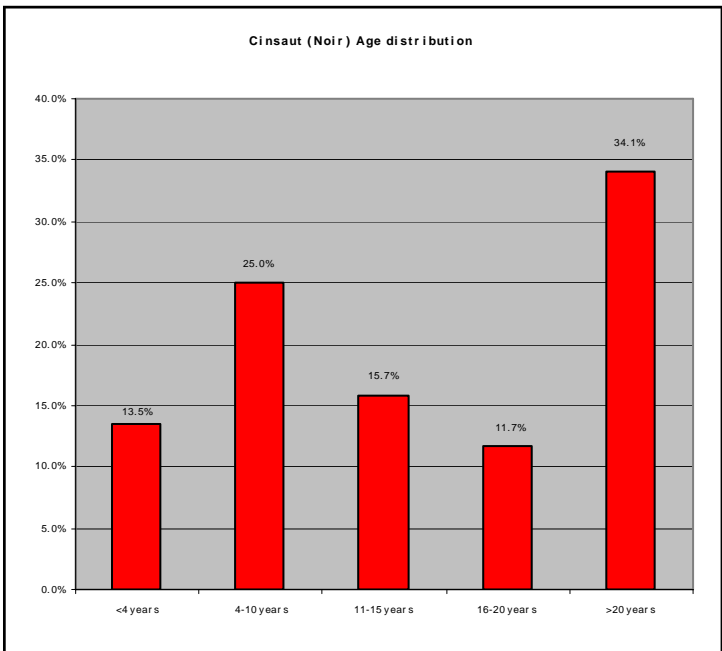
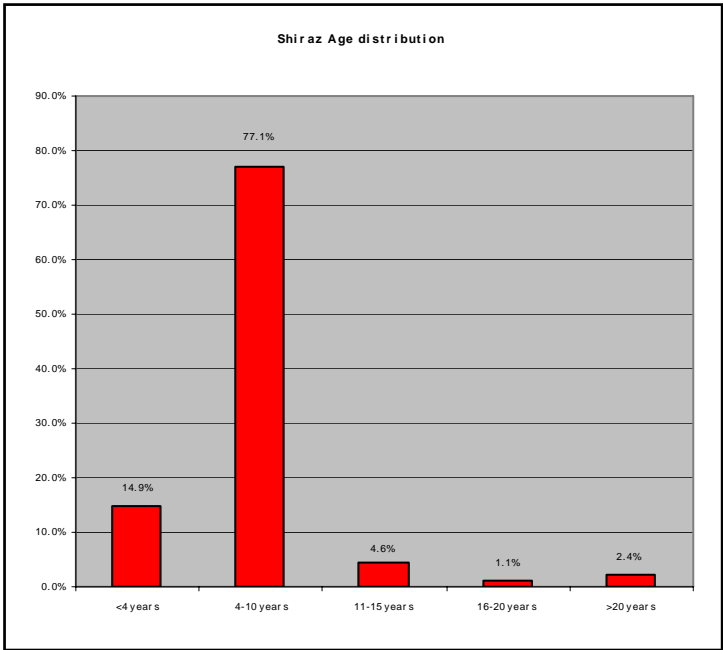
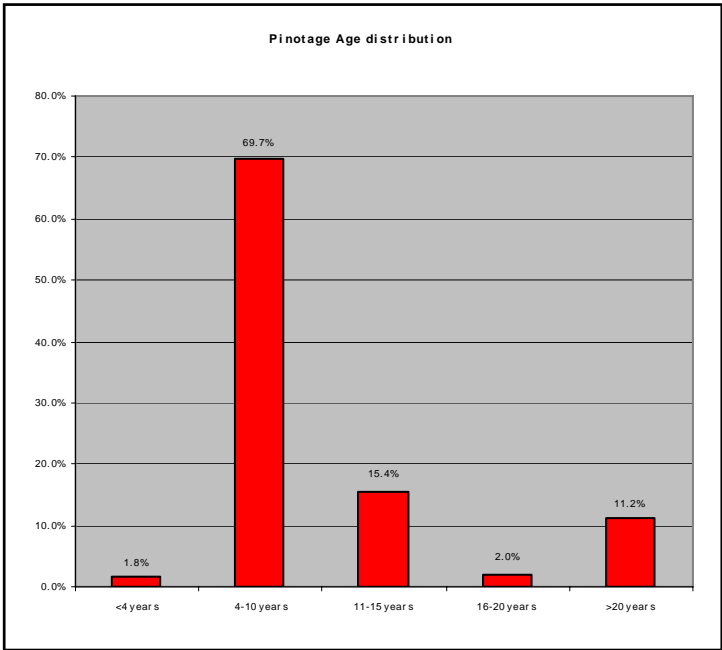
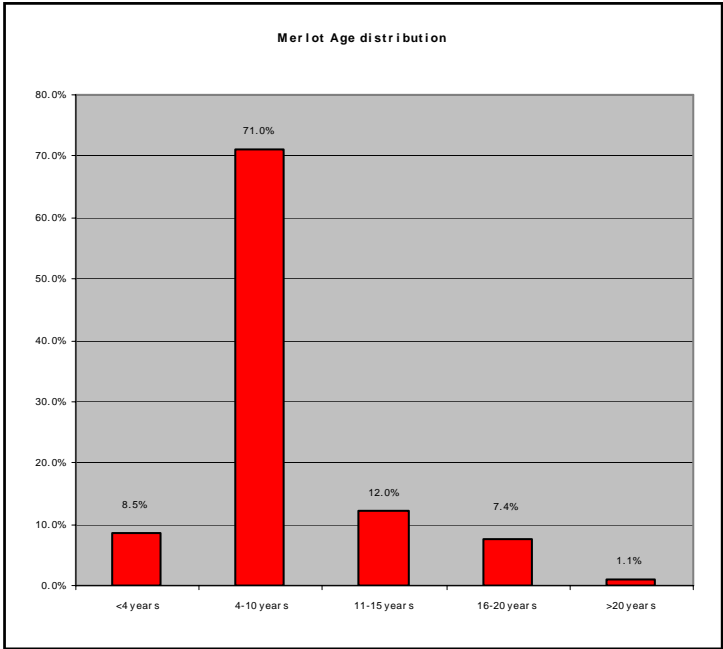
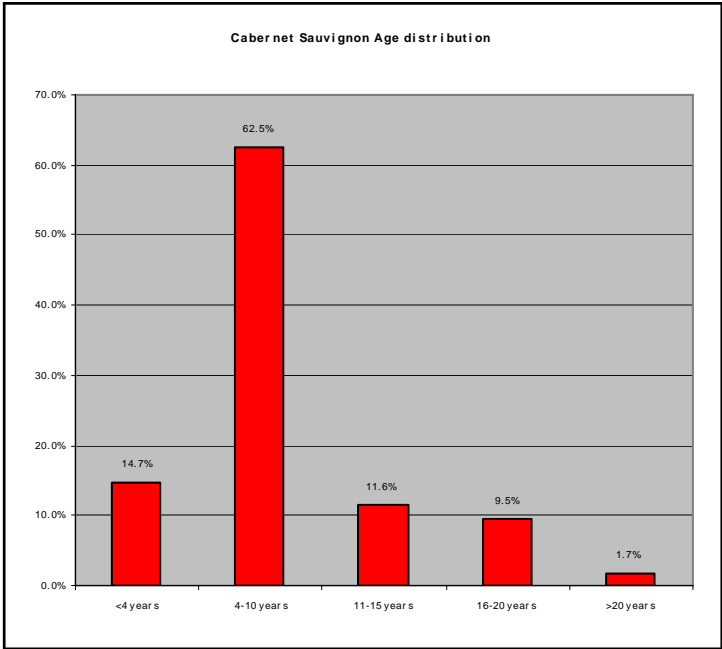


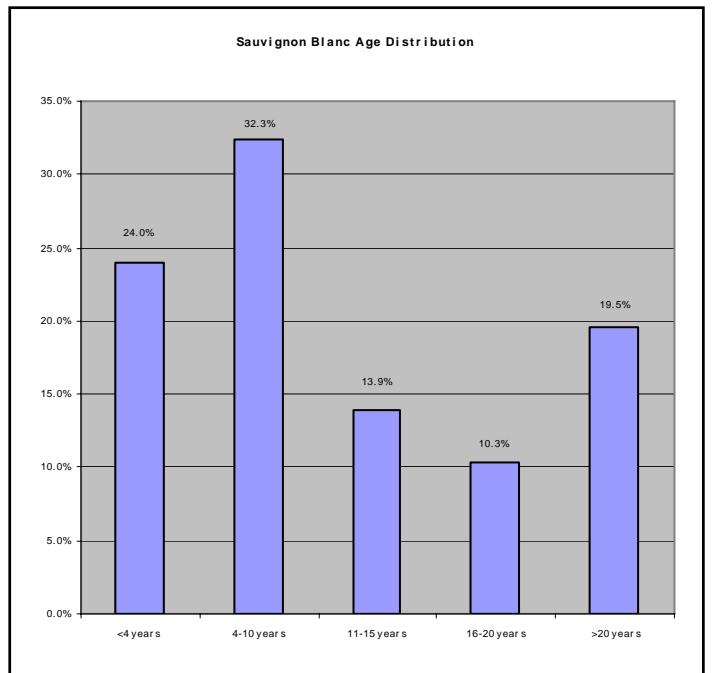
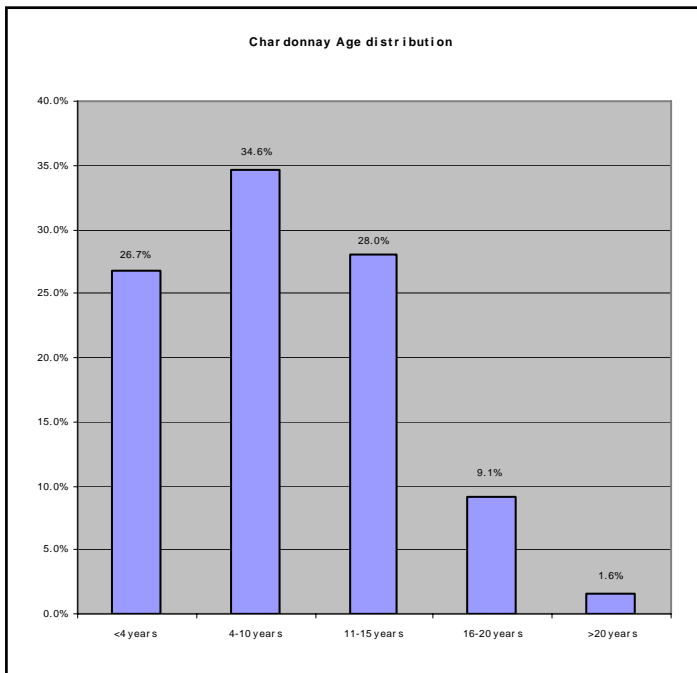
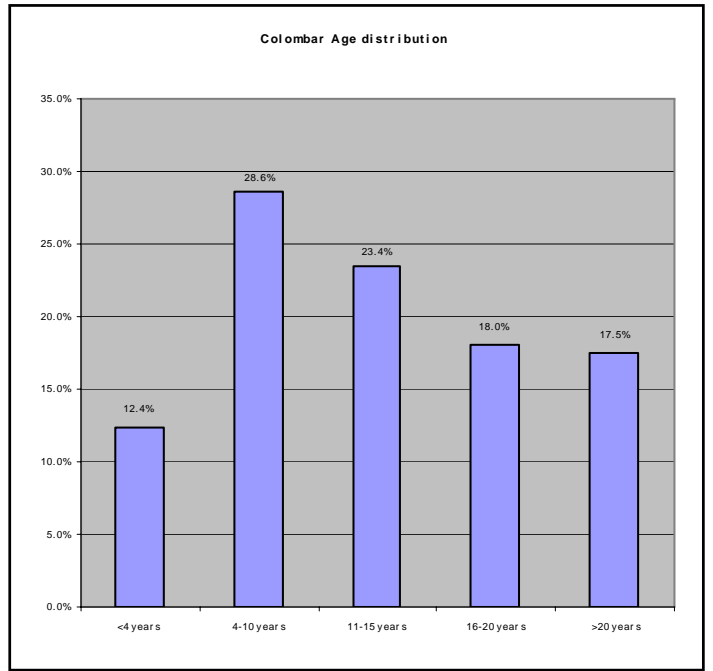
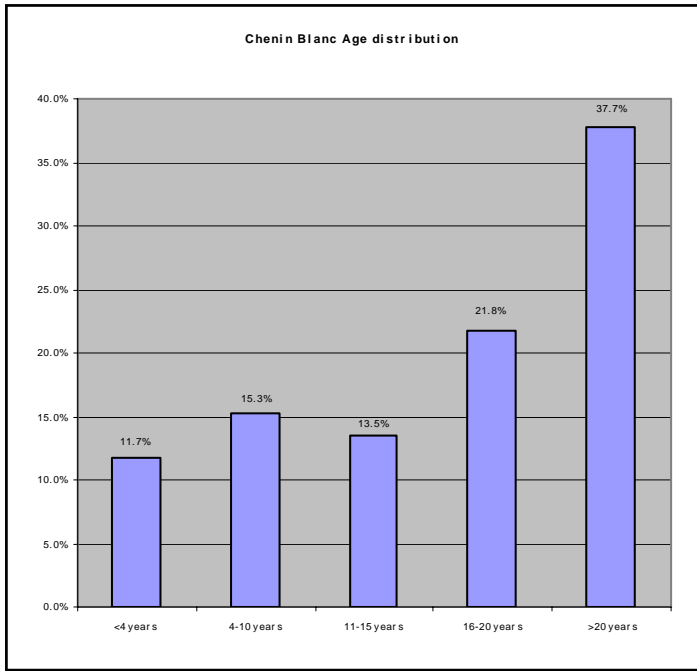
AGE OF VINES PER WINE REGION FOR 2005 - %

AGE OF VINES	HECTARES IN WINE REGION AS % OF TOTAL								
	TOTAL HECTARES	ORANGE RIVER	OLIFANTS RIVER	MALMES-BURY	LITTLE KAROO	PAARL	ROBERTSON	STELLENBOSCH	WORCES-TER
< 4 Years	8.3	10.2	9.6	6.5	10.1	5.3	11.4	5.3	11.7
4 - 10 Years	12.5	44.0	16.1	7.5	17.9	7.3	14.1	6.7	14.6
11 - 15 Years	10.2	13.5	17.3	6.3	16.2	5.4	15.4	4.6	13.6
16 - 20 Years	9.8	13.6	10.4	7.8	13.7	7.8	11.4	6.8	13.1
> 20 Years	13.6	7.9	12.1	16.6	16.8	16.7	11.4	12.0	12.8
Total white varieties	54.3	89.2	65.6	44.7	74.7	42.5	63.7	35.4	65.9
< 4 Years	5.8	1.3	3.1	6.4	3.8	8.4	4.6	7.2	5.2
4 - 10 Years	29.3	7.4	27.9	36.4	16.8	33.7	25.9	36.8	23.2
11 - 15 Years	5.1	1.0	1.9	5.6	1.5	6.8	3.8	9.6	3.3
16 - 20 Years	2.8	1.0	0.7	2.5	0.8	4.5	1.1	6.8	0.9
> 20 Years	2.7	0.1	0.8	4.4	2.4	4.0	1.0	4.2	1.4
Total red varieties	45.7	10.8	34.4	55.3	25.3	57.5	36.3	64.6	34.1
< 4 Years	14.1	11.5	12.7	12.9	14.0	13.7	16.0	12.5	16.9
4 - 10 Years	41.8	51.5	44.1	43.9	34.7	41.0	40.0	43.5	37.9
11 - 15 Years	15.3	14.5	19.2	11.8	17.6	12.2	19.2	14.2	17.0
16 - 20 Years	12.6	14.5	11.1	10.3	14.5	12.3	12.5	13.6	14.1
> 20 Years	16.2	8.0	13.0	21.0	19.2	20.7	12.4	16.2	14.2
Total white and red	100.0	100.0	100.0	100.0	100.0	100.0	100.0	100.0	100.0

AGE OF VINES PER VARIETY FOR 2005 - %





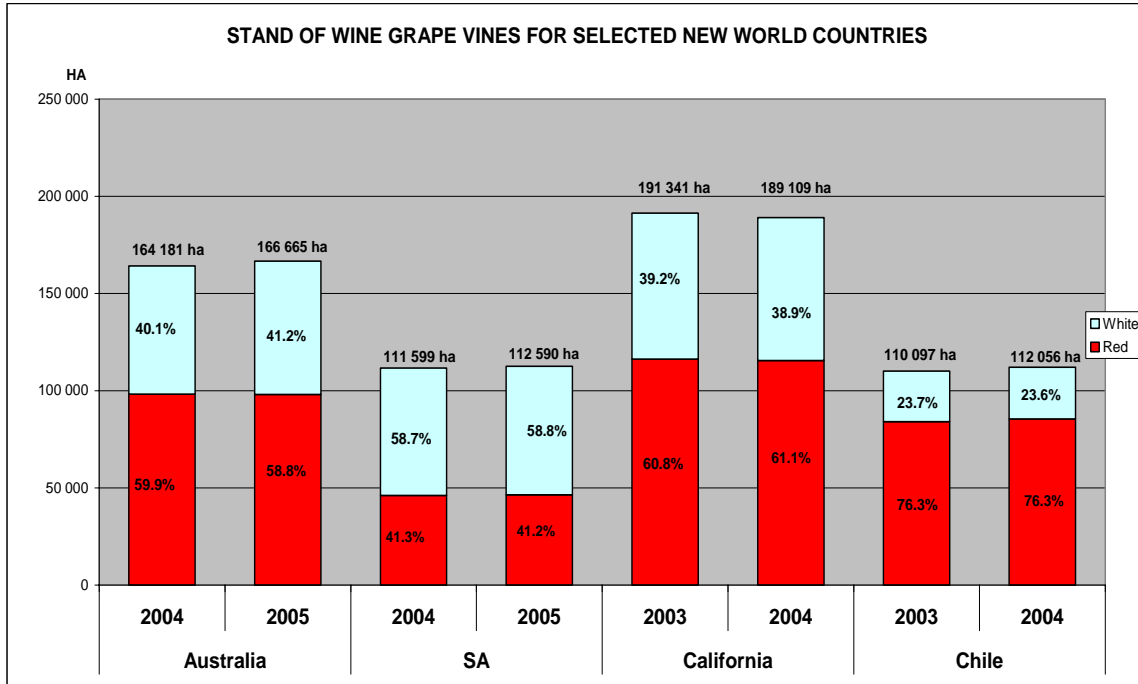


STATUS OF SELECTED WINE VARIETIES FROM 1996 TO 2005

Red varieties	1996	2001	Trend 1996-2001	2005	Trend 2001-2005
	Total hectares		%	Total hectares	%
ALICANTE BOUSCHET	6.1	8.0	130.9	13.1	162.9
BARBERA	7.6	20.2	265.9	39.7	196.6
CABERNET FRANC	284.6	541.0	190.1	965.3	178.4
CABERNET SAUVIGNON	4 665.0	10 389.8	222.7	13 572.2	130.6
CARIGNAN	75.6	68.4	90.4	72.2	105.6
CINSAUT NOIR	4 090.7	3 367.7	82.3	2 821.5	83.8
GAMAY NOIR	41.2	33.2	80.6	28.6	86.2
GRENACHE NOIR	44.3	33.4	75.3	67.7	202.9
HANEPOOT RED	9.5	4.4	46.3	3.0	67.8
MALBEC	20.7	229.7	1 108.5	431.6	187.9
MATARO	1.2	33.0	2 659.7	290.4	880.7
MERLOT	1 811.9	5 705.6	314.9	6 941.7	121.7
MEUNIER	2.5	6.0	239.0	4.1	68.8
MUSKADEL RED	493.4	360.9	73.1	307.5	85.2
NEBBIOLO	1.2	14.7	1 252.1	14.3	97.8
PETIT VERDOT	10.3	204.8	1 980.4	557.6	272.3
PINOT NOIR	416.5	509.0	122.2	535.1	105.1
PINOTAGE	3 196.4	6 879.9	215.2	6 493.5	94.4
ROOBERNET	17.2	105.6	615.0	136.0	128.8
RUBY CABERNET	751.6	2 280.7	303.5	2 648.1	116.1
SANGIOVESE	0.7	42.2	6 300.0	58.4	138.4
SEMILLON RED	13.3	3.3	24.8	1.6	47.4
SHIRAZ	1 029.8	7 078.1	687.3	9 793.8	138.4
SOUZAO	33.3	41.5	124.6	41.8	100.7
TANNAT	-	1.7	-	29.4	1 761.7
TEMPRANILLO	12.1	17.7	146.0	38.7	218.9
TINTA BAROCCA	412.3	378.6	91.8	344.4	91.0
TOURIGA NACIONAL	13.2	43.3	327.5	82.4	190.3
ZINFANDEL	31.4	28.4	90.4	34.9	122.9

White varieties	1996	2001	Trend 1996-2001	2005	Trend 2001-2005
	Total hectares		%	Total hectares	%
BUKETTRAUBE	395.5	247.1	62.5	130.5	52.8
CAPE RIESLING	3 382.4	1 784.1	52.7	1 149.6	64.4
CHARDONNAY	4 346.6	5 989.6	137.8	7 927.0	132.3
CHENEL	574.4	270.0	47.0	147.3	54.6
CHENIN BLANC	26 507.3	21 099.6	79.6	19 053.5	90.3
CINSAUT BLANC	108.1	30.4	28.1	10.5	34.5
CLAIRETTE BLANCHE	1 789.6	686.3	38.4	412.0	60.0
COLOMBAR	10 189.8	11 072.5	108.7	11 429.5	103.2
EMERALD RIESLING	465.8	277.6	59.6	195.5	70.4
FERNAO PIRES	349.8	304.2	87.0	218.5	71.8
FRENCH	3 888.2	1 119.0	28.8	565.9	50.6
FURMINT	50.9	17.8	35.0	4.2	23.6
GEWURZTRAMINER	278.8	205.7	73.8	147.0	71.5
GRENACHE BLANC	27.9	23.7	85.0	33.1	139.9
HANEPOOT WHITE	5 357.2	3 600.4	67.2	2 639.0	73.3
HARSLEVELU	544.4	219.0	40.2	106.8	48.8
KANAAN (BELIES)	335.5	87.2	26.0	44.2	50.7
KERNER	46.2	14.0	30.3	4.5	32.1
MORIO MUSCAT	27.1	25.9	95.8	23.0	88.9
MUSCAT OTTONEL	40.8	31.8	77.9	18.6	58.5
MUSKADEL WHITE	739.1	716.2	96.9	634.2	88.5
NOUVELLE	0.04	3.6	9 050.0	158.7	4 384.3
PEDRO LUIS	167.1	62.5	37.4	7.7	12.3
PINOT BLANC	59.1	28.4	48.1	24.3	85.6
PINOT GRIS	147.9	93.8	63.4	78.0	83.2
RAISIN BLANC	1 056.0	280.5	26.6	141.4	50.4
SAUVIGNON BLANC	4 479.0	5 758.4	128.6	7 661.2	133.0
SEMILLON	871.9	987.8	113.3	1 070.3	108.4
THERONA	172.2	162.7	94.5	127.2	78.2
UGNI BLANC	270.3	120.4	44.5	73.3	60.9
VIIGNIER	0.3	94.5	30 496.8	628.9	665.2
WEISSER RIESLING	807.8	417.1	51.6	275.9	66.1
WELDRA	80.5	37.6	46.7	20.4	54.4

STATUS OF WINE-GRAPE VINES FOR SELECTED NEW WORLD COUNTRIES



TOTAL VINEYARD STATUS - COMPARISON BY VARIETY

VARIETY	Australia				South Africa			
	2004	% of total	2005	% of total	2004	% of total	2005	% of total
RED								
Cabernet Sauvignon	29 313	17.9%	28 621	17.2%	13 531	12.1%	13 572	12.1%
Shiraz	39 182	23.9%	40 508	24.3%	9 415	8.4%	9 794	8.7%
Merlot	10 804	6.6%	10 816	6.5%	6 969	6.2%	6 942	6.2%
Pinotage					6 664	6.0%	6 494	5.8%
Ruby Cabernet	1 998	1.2%	1 681	1.0%	2 648	2.4%	2 648	2.4%
Pinot Noir	4 424	2.7%	4 231	2.5%	522	0.5%	535	0.5%
TOTAL	98 290	59.9%	98 033	58.8%	46 133	41.3%	46 393	41.2%
WHITE								
Chardonnay	28 008	17.1%	30 507	18.3%	7 283	6.5%	7 927	7.0%
Sauvignon Blanc	3 425	2.1%	4 152	2.5%	6 944	6.2%	7 661	6.8%
Semillon	6 728	4.1%	6 282	3.8%	1 003	0.9%	1 070	1.0%
TOTAL	65 891	40.1%	68 632	41.2%	65 466	58.7%	66 197	58.8%
GRAND TOTAL	164 181	100.0%	166 665	100.0%	111 599	100.0%	112 590	100.0%

VARIETY	California				Chile			
	2003	% of total	2004	% of total	2003	% of total	2004	% of total
RED								
Cabernet Sauvignon	30 437	15.9%	30 320	16.0%	39 371	35.8%	40 086	35.8%
Merlot	21 009	11.0%	21 682	11.5%	12 879	11.7%	12 942	11.5%
Ruby Cabernet	3 026	1.6%	2 716	1.4%				
Pinot Noir	9 700	5.1%	9 722	5.1%	1 422	1.3%	1 440	1.3%
TOTAL	116 265	60.8%	115 535	61.1%	84 048	76.3%	85 506	76.3%
WHITE								
Chardonnay	39 560	20.7%	39 069	20.7%	7 565	6.9%	7 722	6.9%
Sauvignon Blanc	6 200	3.2%	6 151	3.3%	7 368	6.7%	7 741	6.9%
TOTAL	75 076	39.2%	73 574	38.9%	26 049	23.7%	26 550	23.7%
GRAND TOTAL	191 341	100.0%	189 109	100.0%	110 097	100.0%	112 056	100.0%