



STATISTICS OF WINE-GRAPE VINES

as on 30 November 2004



Compiled from annual returns submitted by
registered wine-growers

ENQUIRIES:

Fanie van Niekerk

Tel: (021) 807 5704
Fax: (021) 807 6001
E-mail: fanie@sawis.co.za

Bonita Floris

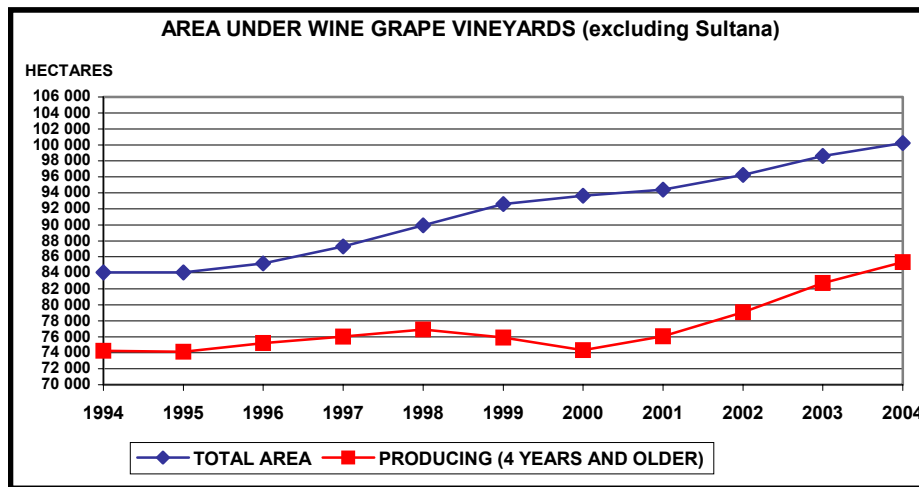
Tel: (021) 807 5714
Fax: (021) 807 6021
E-mail: floris@sawis.co.za
Webpage: www.sawis.co.za

STATUS OF ALL VINE TYPES

Vine Types	2002		2003		2004	
	Vines	Hectares	Vines	Hectares	Vines	Hectares
Wine grapes *	295 637 283	96 233	300 844 872	98 605	305 009 754	100 207
Sultana **	21 031 334	11 765	20 756 164	11 595	20 349 375	11 392
Table grapes **	23 732 562	11 946	24 492 832	13 354	25 061 341	12 700
Rootstocks	261 888	92	275 227	98	282 742	96
Currants ***	1 045 404	348	1 065 208	356	1 043 613	354
Total	341 708 471	120 383	347 434 303	124 008	351 746 825	124 749

- * Includes Hanepoot also used as table grapes and for raisins.
 ** Only portion of production is utilised for production of wine.
 *** For raisins only.

The area under wine-grapes has increased constantly from 1990. The area under wine-grapes is 100 207 hectares in 2004 - an increase of 1.6% from 2003.



AREA DISTRIBUTION OF WINE GRAPE VARIETIES

Wine grape varieties as % of total area

VARIETY	1997	1998	1999	2000	2001	2002	2003	2004
Chenin blanc	30.1	28.7	26.8	24.1	22.3	20.6	19.6	19.1
Colombar(d)	12.4	12.5	12.6	12.2	11.8	11.4	11.2	11.2
Sauvignon blanc	5.5	5.5	5.7	5.7	6.1	6.7	6.9	6.9
Chardonnay	5.8	6.4	6.4	6.4	6.3	6.4	6.8	7.3
Hanepoot *	6.0	5.5	4.8	4.3	3.8	3.4	3.1	2.8
Cape Riesling	3.7	3.5	3.0	2.3	1.9	1.6	1.4	1.2
Sémillon	1.1	1.1	1.1	1.1	1.0	1.0	1.0	1.0
Weisser Riesling	0.9	0.8	0.7	0.6	0.4	0.4	0.3	0.3
Other white varieties	12.5	11.3	9.5	7.1	5.5	4.7	4.3	4.1
Total white varieties	78.1	75.3	70.7	63.8	59.4	56.2	54.6	54.0
Cabernet Sauvignon	5.7	6.3	7.5	9.5	11.0	12.4	13.0	13.5
Shiraz	1.6	2.2	3.7	6.0	7.5	8.4	8.6	9.4
Pinotage	4.4	5.3	6.2	7.0	7.3	7.2	6.8	6.7
Merlot	2.5	2.9	4.1	5.2	6.0	6.6	6.7	7.0
Cinsaut noir	4.6	4.4	4.1	3.7	3.6	3.3	3.1	3.0
Ruby Cabernet	1.0	1.3	1.7	2.1	2.4	2.5	2.5	2.6
Cabernet franc	0.3	0.3	0.3	0.6	0.6	0.8	0.9	0.9
Pinot noir	0.4	0.4	0.5	0.6	0.5	0.6	0.5	0.5
Other red varieties	1.3	1.5	1.5	1.5	1.7	2.0	3.2	2.4
Total red varieties	21.9	24.7	29.5	36.1	40.6	43.7	45.3	46.0
Total white and red	100.0	100.0	100.0	100.0	100.0	100.0	100.0	100.0
Total hectares	87 301	89 935	92 601	93 656	94 412	96 233	98 605	100 207
Sultana * (Hectares)	10 902	11 044	11 578	11 910	11 919	11 765	11 595	11 392

* Also utilised for raisins and as table grapes.

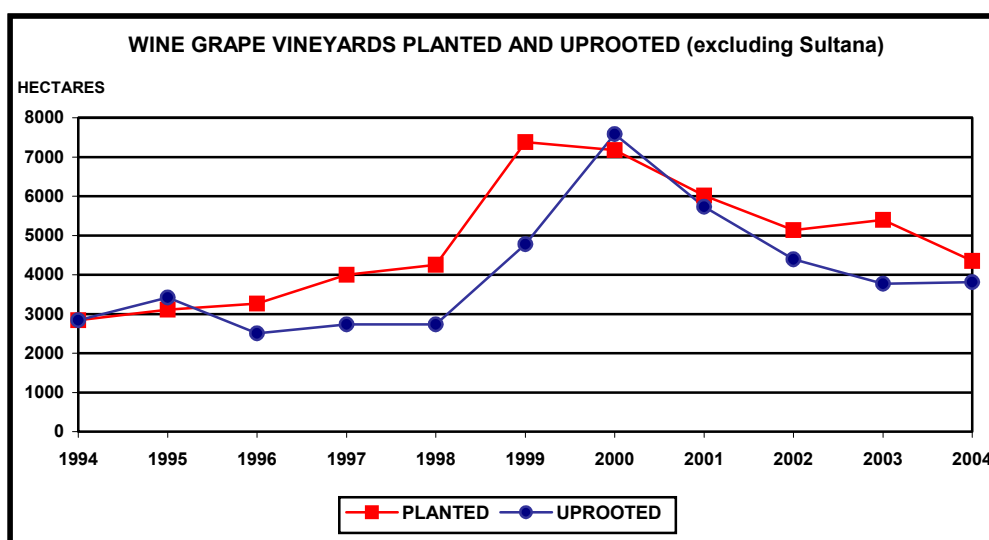
WINE-GRAPE VINES PLANTED AND UPROOTED FOR 2004

REGION	PLANTINGS		UPROOTINGS		* AMENDMENTS	
	VINES	HECTARES	VINES	HECTARES	VINES	HECTARES
ORANGE RIVER	252 718	122.20	690 184	322.72	415 588	214.05
OLIFANTS RIVER	1 063 878	418.44	1 031 514	337.12	591 957	219.89
MALMESBURY	1 490 918	623.20	1 529 460	587.03	660 297	302.32
LITTLE KAROO	371 273	123.19	307 345	101.53	80 346	26.69
PAARL	1 970 961	684.89	2 540 345	772.42	890 984	324.35
ROBERTSON	2 355 171	715.86	1 511 721	417.12	190 466	12.65
STELLENBOSCH	1 789 033	614.40	2 390 653	759.40	287 399	120.32
WORCESTER	3 196 281	1 045.44	1 976 650	514.26	535 484	- 154.64
TOTAL	12 490 233	4 347.62	11 977 872	3 811.60	3 652 521	1 065.63

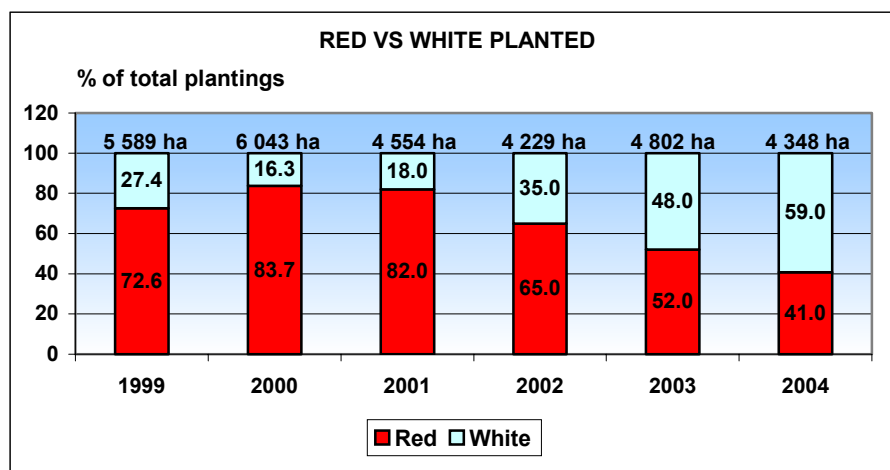
* Due to recounting of vines as well as plantings and uprootings of previous years which were not taken into account.

* Includes Sultana

From 1990 to 1995 plantings and uprootings were in balance with each other. From 1996 to 1999 more vines were planted than uprooted. In 2004 - 4 348 hectares were planted while 3 812 hectares were uprooted.



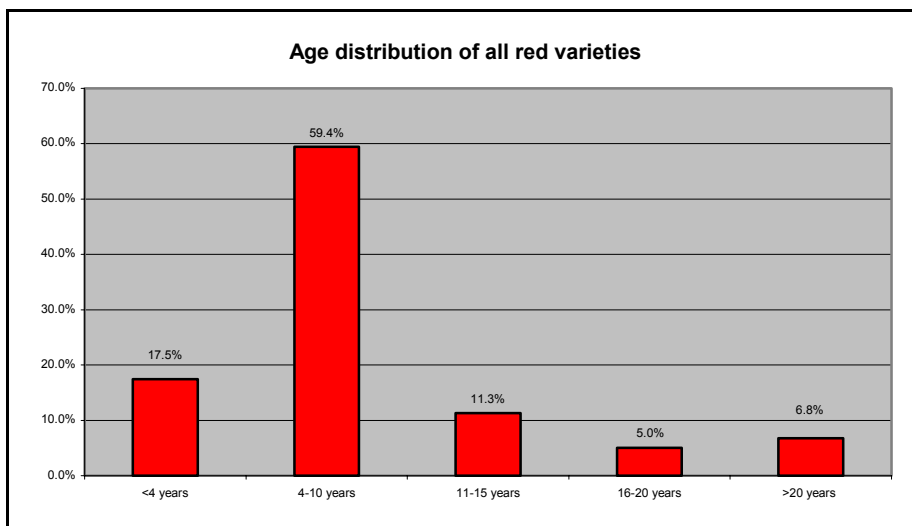
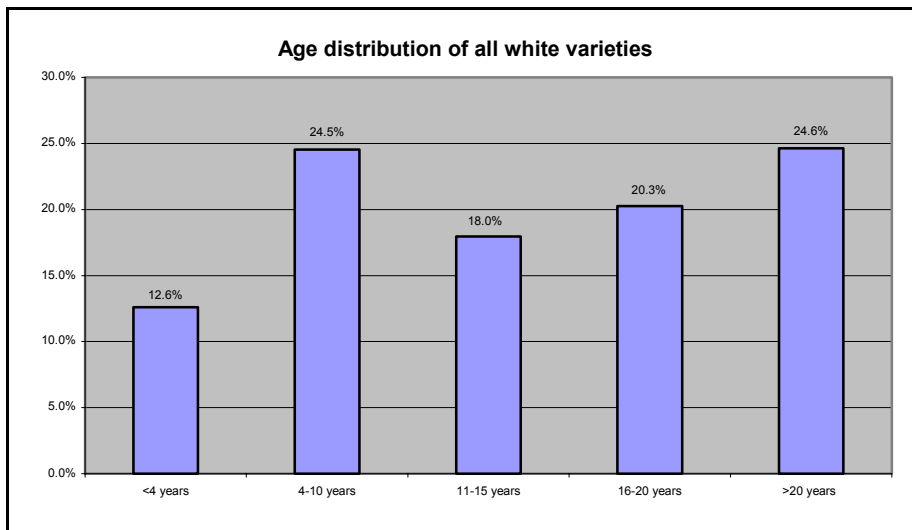
During 2004 about 59% of plantings were white and 41% red. From 1996 to 2001 plantings of red varieties increased predominantly in contrast with those of white varieties. In 2003 the plantings of red varieties, however, decreased by 10.5% and with a further 27.7% in 2004. Total plantings decreased by 9.5% in 2004 from 2003.

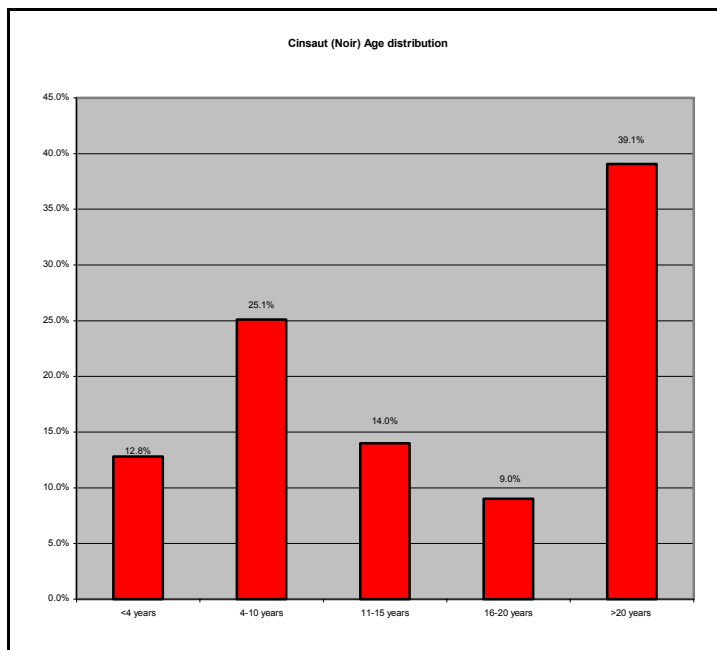
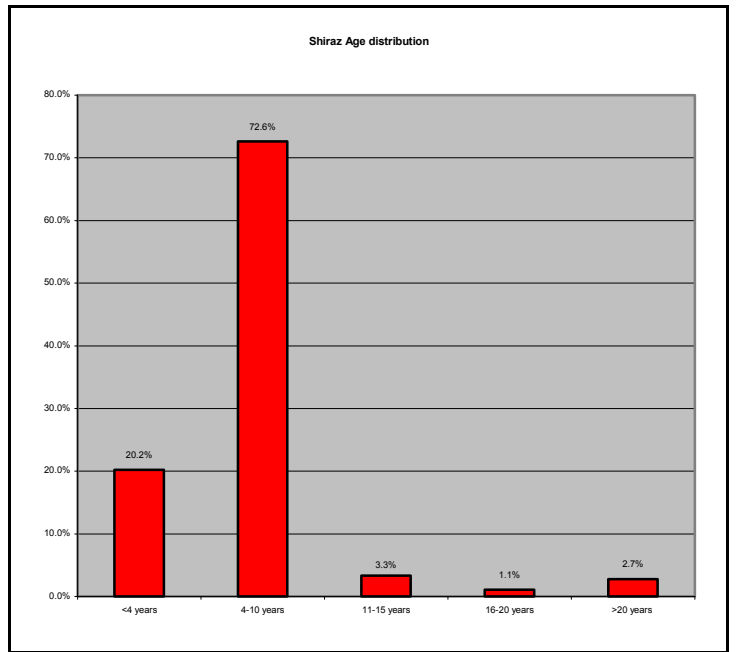
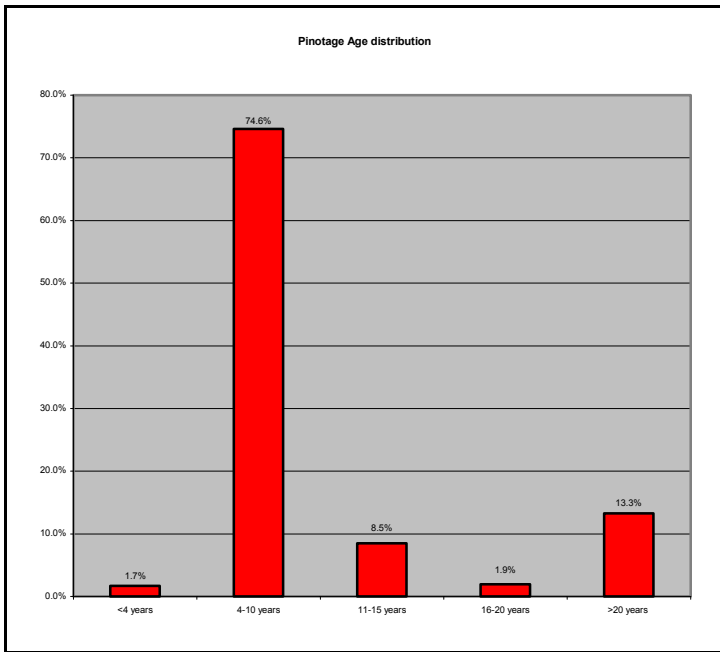
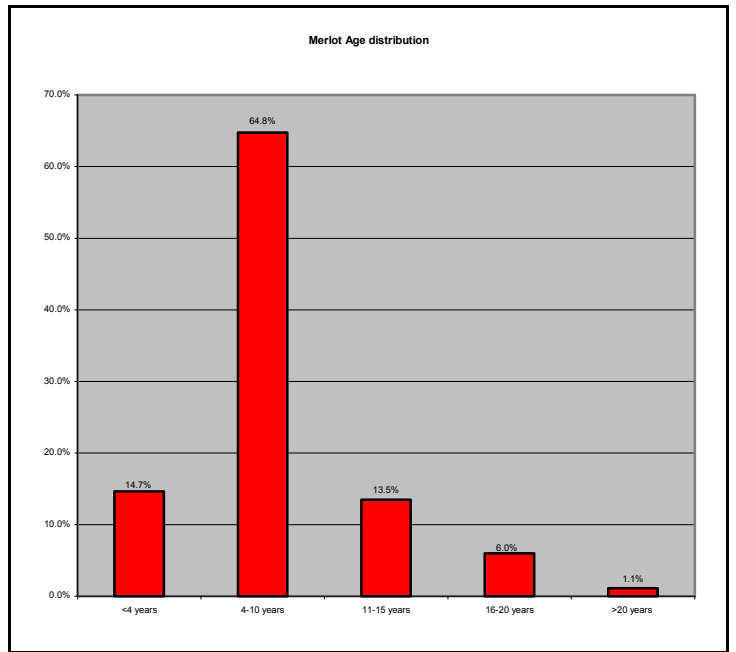
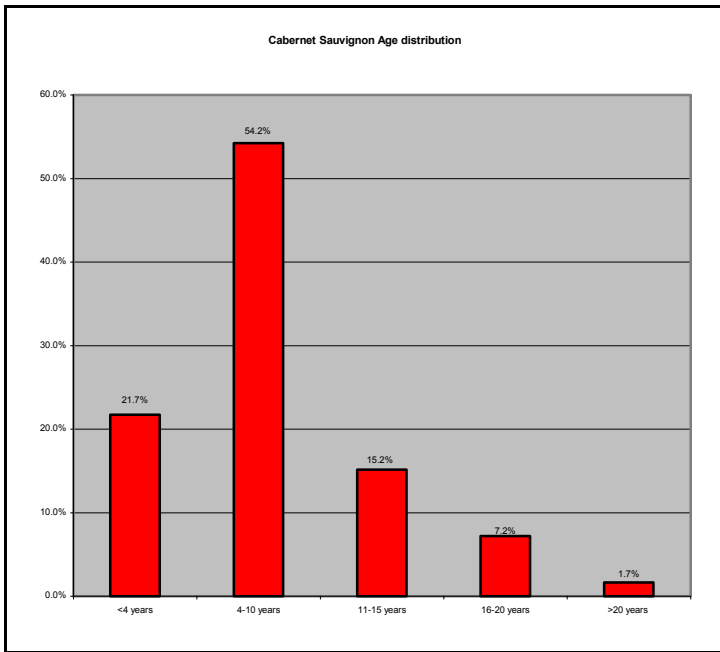


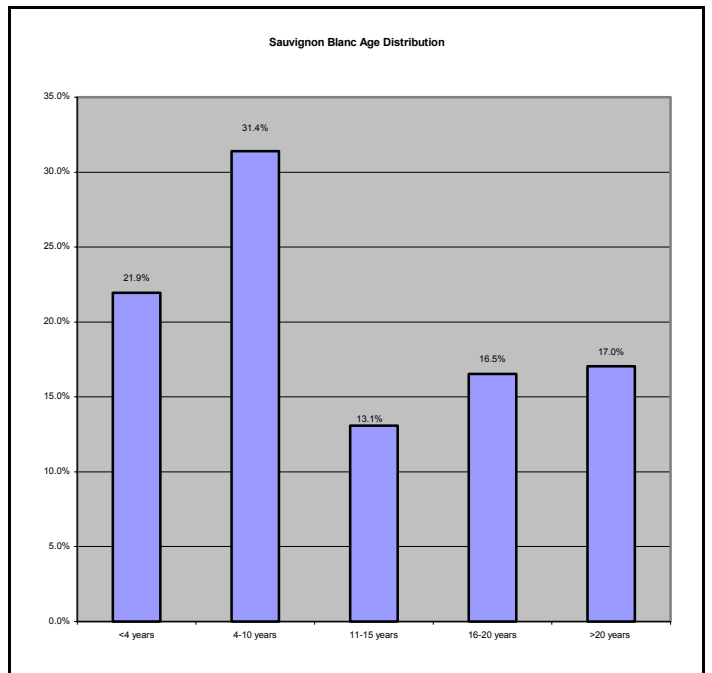
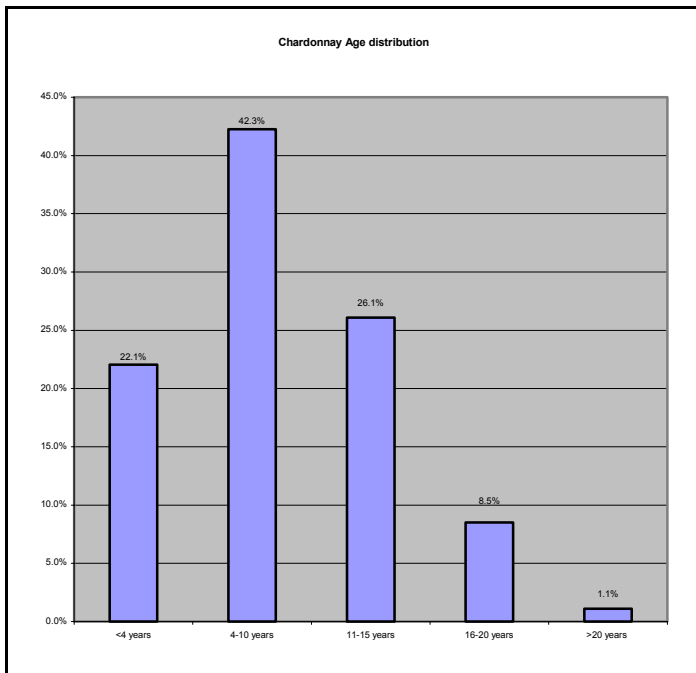
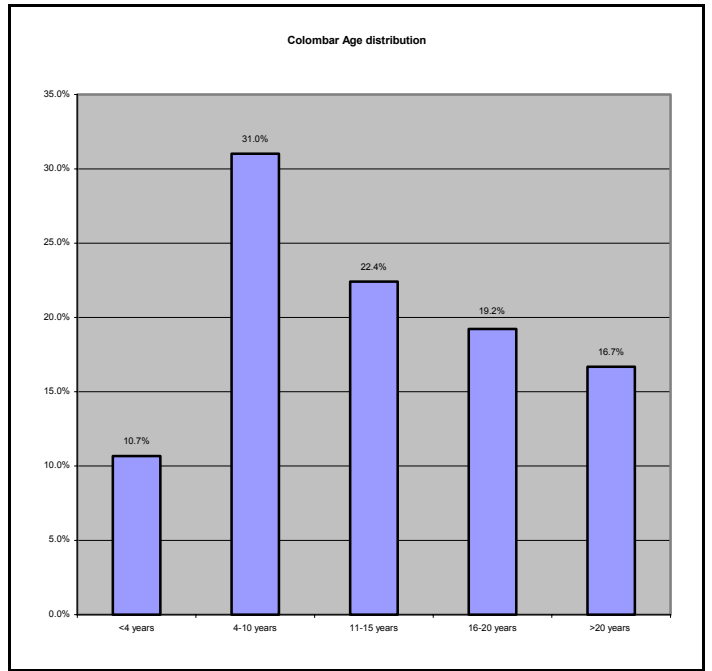
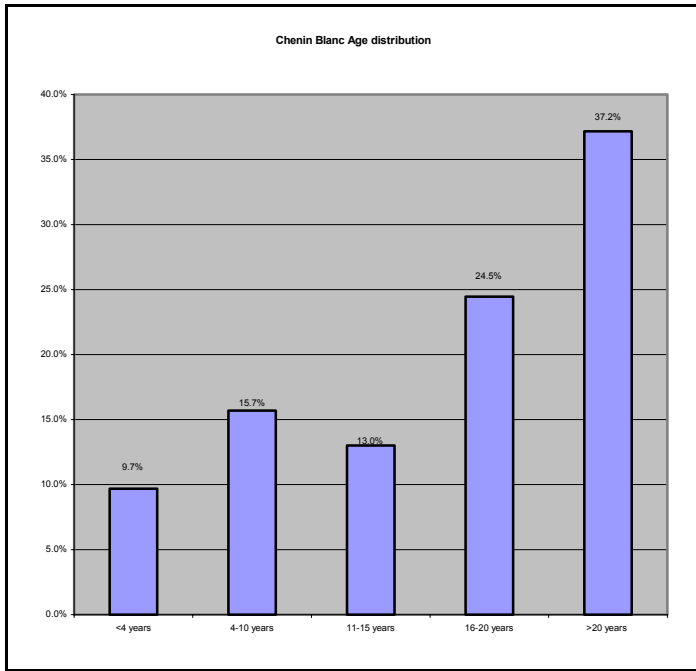
AGE OF VINES PER WINE REGION FOR 2004 - %

AGE OF VINES	HECTARES IN WINE REGION AS % OF TOTAL								
	TOTAL HECTARES	ORANGE RIVER	OLIFANTS RIVER	MALMES-BURY	LITTLE KAROO	PAARL	ROBERT-SON	STELLEN-BOSCH	WORCES-TER
< 4 Years	6.8	6.9	8.4	5.2	7.5	4.9	9.8	4.0	9.5
4 - 10 Years	13.2	48.1	17.2	7.9	20.7	7.1	16.2	6.6	15.5
11 - 15 Years	9.7	12.8	16.2	5.9	14.8	5.4	14.1	4.7	13.5
16 - 20 Years	10.9	13.4	11.0	8.6	15.1	9.1	13.0	8.1	14.5
> 20 Years	13.3	8.0	11.9	17.1	16.8	16.5	10.8	10.9	12.5
Total white varieties	54.0	89.2	64.8	44.8	74.9	43.0	63.8	34.2	65.5
< 4 Years	8.0	1.0	4.6	10.2	4.8	10.9	6.2	10.4	6.6
4 - 10 Years	27.4	8.0	27.7	33.0	15.6	30.6	24.5	33.8	22.3
11 - 15 Years	5.2	1.0	1.5	4.8	1.4	7.2	3.6	10.6	3.3
16 - 20 Years	2.3	0.7	0.6	2.0	0.7	3.6	0.8	5.9	0.6
> 20 Years	3.1	0.2	0.8	5.1	2.6	4.6	1.1	5.1	1.7
Total red varieties	46.0	10.8	35.2	55.2	25.1	57.0	36.2	65.8	34.5
< 4 Years	14.8	7.9	13.0	15.5	12.3	15.8	16.0	14.4	16.1
4 - 10 Years	40.6	56.1	44.9	40.9	36.3	37.7	40.7	40.3	37.8
11 - 15 Years	14.9	13.8	17.7	10.8	16.2	12.6	17.7	15.3	16.8
16 - 20 Years	13.2	14.1	11.6	10.6	15.8	12.7	13.7	14.0	15.1
> 20 Years	16.4	8.2	12.7	22.2	19.3	21.2	11.9	15.9	14.2
Total white and red	100.0	100.0	100.0	100.0	100.0	100.0	100.0	100.0	100.0

AGE OF VINES PER VARIETY FOR 2004 - %





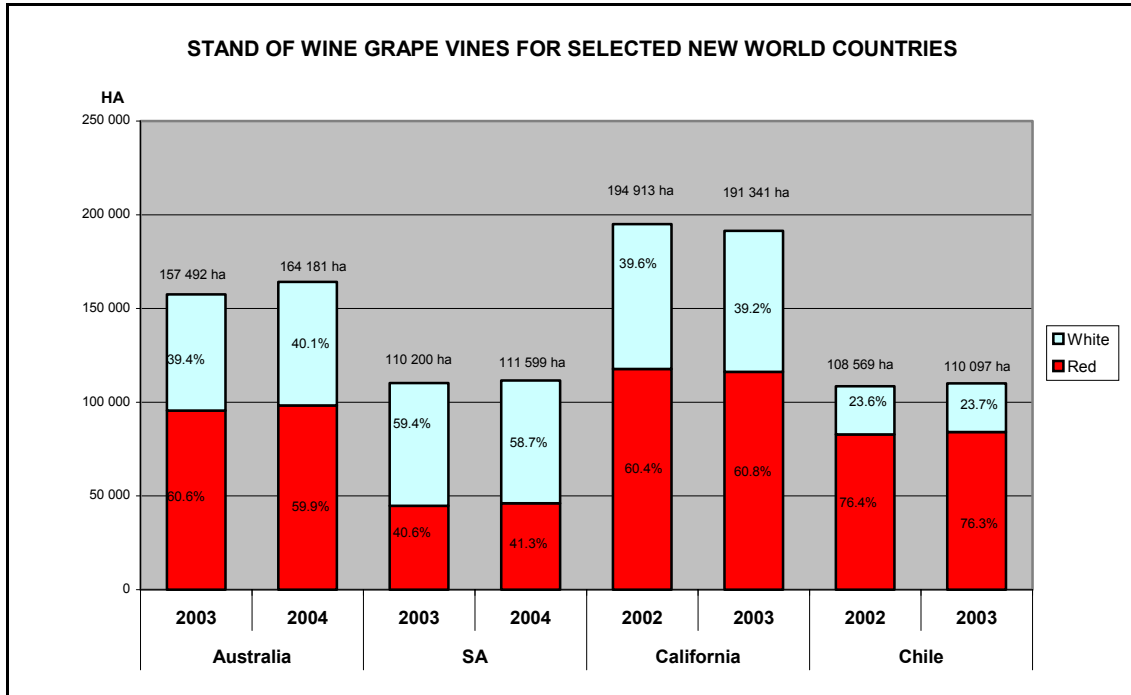


STATUS OF SELECTED WINE VARIETIES FROM 1995 TO 2004

Red varieties	1995	2000	Trend 1995-2000	2004	Trend 2000-2004
	Total hectares	Total hectares	%	Total hectares	%
ALICANTE BOUSCHET	9.1	8.2	89.8	14.1	172.0
BARBERA	7.4	15.2	205.1	39.4	259.6
CABERNET FRANC	261.9	488.0	186.3	932.7	191.1
CABERNET SAUVIGNON	4650.4	8824.2	189.7	13530.8	153.3
CARIGAN	72.8	70.7	97.0	75.1	106.2
CINSAUT NOIR	4138.0	3533.1	85.4	3035.4	85.9
GAMAY NOIR	44.0	36.4	82.7	28.6	78.7
GRENACHE RED	45.0	39.6	88.1	59.3	149.5
HANEPOORT RED	9.5	10.7	112.1	3.1	29.4
MALBEC	16.6	75.5	455.3	397.9	526.8
MATARO	0.1	13.5	11208.3	235.8	1753.0
MERLOT	1722.8	4887.9	283.7	6968.5	142.6
MUNIER	0.6	6.0	937.5	4.1	68.8
MUSKADEL RED	512.1	360.4	70.4	305.0	84.6
NEBBIOLO	1.2	11.7	1003.4	15.7	133.5
PETIT VERDOT	7.1	109.4	1551.9	465.2	425.2
PINOT NOIR	401.0	487.3	121.5	521.6	107.0
PINOTAGE	2574.8	6500.8	252.5	6663.6	102.5
ROOBERNET	2.5	77.6	3152.8	135.9	175.2
RUBY CABERNET	637.1	2049.6	321.7	2648.2	129.2
SANGIOVESE	0.7	35.1	5238.8	56.7	161.5
SEMILLON RED	13.5	3.8	28.1	1.6	41.1
SHIRAZ	943.8	5630.5	596.6	9414.7	167.2
SOUZAO	33.3	36.4	109.1	41.8	115.0
TANNAT	-	1.2	-	22.7	1889.2
TEMPRANILLO	-	-	-	29.9	-
TINTA BAROCCA	414.9	395.3	95.3	347.4	87.9
TOURIGA NACIONAL	9.1	41.4	457.7	79.0	190.8
ZINFANDEL	34.2	27.8	81.3	35.9	128.9

White varieties	1995	2000	Trend 1995-2000	2004	Trend 2000-2004
	Total hectares	Total hectares	%	Total hectares	%
BUKETTRAUBE	411.7	280.3	68.1	195.3	69.7
CAPE RIESLING	3434.6	2160.6	62.9	1236.7	57.2
CHARDONNAY	3710.1	6067.4	163.5	7283.1	120.0
CHENEL	563.7	339.1	60.2	163.3	48.2
CHENIN BLANC	26786.3	22565.5	84.2	19148.0	84.9
CINSAUT BLANC	110.8	41.1	37.1	11.0	26.8
CLAIRETTE BLANCHE	1882.1	938.3	49.9	429.9	45.8
COLOMBAR	9898.9	11431.7	115.5	11258.0	98.5
EMERALD RIESLING	460.1	340.3	74.0	224.5	66.0
FERNAO PIRES	325.8	338.8	104.0	233.3	68.9
FRENCH	4243.3	1631.5	38.4	627.8	38.5
FURMINT	50.9	17.4	34.1	5.8	33.4
GEWURTRAMINER	298.1	210.0	70.4	162.2	77.2
GRENACHE BLANC	27.9	27.3	98.0	26.2	96.0
HANEPOOT WHITE	5513.2	4047.0	73.4	2825.1	69.8
HARSLEVELU	558.7	284.5	50.9	129.9	45.7
KANAAN (BELIES)	358.5	171.9	48.0	49.2	28.6
KERNER	51.3	21.5	42.0	6.2	28.8
MORIO MUSCAT	27.1	20.8	76.8	21.1	101.4
MUSCAT OTTONEL	42.1	34.3	81.5	641.0	1868.8
MUSKADEL WHITE	693.8	772.8	111.4	21.7	2.8
NOUVELLE	-	1.9	-	74.7	3952.4
PEDRO LUIS	181.0	45.9	25.3	7.7	16.8
PINOT BLANC	59.7	34.7	58.1	29.4	84.8
PINOT GRIS	152.3	103.8	68.1	75.5	72.8
RAISIN BLANC	1119.9	432.1	38.6	162.7	37.7
SAUVIGNON BLANC	4222.0	5436.1	128.8	6944.4	127.7
SEMILLON	816.9	1029.0	126.0	1003.5	97.5
THERONA	165.2	185.4	112.2	132.5	71.5
UGNI BLANC	276.5	147.3	53.3	83.7	56.8
VIIGNIER	0.2	50.1	22772.7	492.6	983.2
WEISSER RIESLING	828.2	476.7	57.6	290.2	60.9
WELDA	80.7	54.5	67.5	24.9	45.7

STATUS OF WINE-GRAPE VINES FOR SELECTED NEW WORLD COUNTRIES



TOTAL VINEYARD STATUS - COMPARISON BY VARIETY

VARIETY	Australia				South Africa			
	2003	% of total	2004	% of total	2003	% of total	2004	% of total
RED								
Cabernet Sauvignon	28 871	18.3%	29 313	17.9%	13 160	11.9%	13 531	12.1%
Shiraz	37 016	23.5%	39 182	23.9%	8 724	7.9%	9 415	8.4%
Merlot	10 352	6.6%	10 804	6.6%	6 781	6.2%	6 969	6.2%
Pinotage					6 829	6.2%	6 664	6.0%
Ruby Cabernet	2 530	1.6%	1 998	1.2%	2 533	2.3%	2 648	2.4%
Pinot Noir	4 270	2.7%	4 424	2.7%	536	0.5%	522	0.5%
TOTAL	95 491	60.6%	98 290	59.9%	44 731	40.6%	46 133	41.3%
WHITE								
Chardonnay	24 138	15.3%	28 008	17.1%	6 689	6.1%	7 283	6.5%
Sauvignon Blanc	2 953	1.9%	3 425	2.1%	6 844	6.2%	6 944	6.2%
Semillon	6 283	4.0%	6 728	4.1%	997	0.9%	1 003	0.9%
TOTAL	62 001	39.4%	65 891	40.1%	65 469	59.4%	65 466	58.7%
GRAND TOTAL	157 492	100.0%	164 181	100.0%	110 200	100.0%	111 599	100.0%

VARIETY	California				Chile			
	2002	% of total	2003	% of total	2002	% of total	2003	% of total
RED								
Cabernet Sauvignon	30 778	15.8%	30 437	15.9%	39 261	36.2%	39 371	35.8%
Merlot	21 137	10.8%	21 009	11.0%	12 768	11.8%	12 879	11.7%
Ruby Cabernet	3 280	1.7%	3 026	1.6%				
Pinot Noir	9 671	5.0%	9 700	5.1%	1 434	1.3%	1 422	1.3%
TOTAL	117 722	60.4%	116 265	60.8%	82 947	76.4%	84 048	76.3%
WHITE								
Chardonnay	39 991	20.5%	39 560	20.7%	7 561	7.0%	7 565	6.9%
Sauvignon Blanc	5 888	3.0%	6 200	3.2%	7 041	6.5%	7 368	6.7%
TOTAL	77 191	39.6%	75 076	39.2%	25 622	23.6%	26 049	23.7%
GRAND TOTAL	194 913	100.0%	191 341	100.0%	108 569	100.0%	110 097	100.0%