



TABLE 3:

## STOCK SITUATION - VARIOUS REGIONS' STOCK AS % OF TOTAL

	TOTAL						LK, ROB & WORC						OLIFANTS- & ORANGE						STB, PRL & MALM					
	2007		2008		2009		2007		2008		2009		2007		2008		2009		2007		2008		2009	
	litres	% of total	litres	% of total	litres	% of total	litres	type	litres	type	litres	type	litres	type	litres	type	litres	type	litres	type	litres	type	litres	type
Cabernet Sauvignon	30 857 080	8.3%	24 306 677	7.8%	18 939 419	6.5%	13 402 145	43.4%	9 810 132	40.4%	8 441 425	44.6%	3 951 429	12.8%	1 481 604	6.1%	945 779	5.0%	13 503 507	43.8%	13 014 942	53.5%	9 552 215	50.4%
Merlot	20 108 105	5.4%	13 245 791	4.3%	11 320 722	3.9%	8 037 361	40.0%	5 955 851	45.0%	4 814 335	42.5%	3 489 197	17.4%	886 320	6.7%	773 039	6.8%	8 581 548	42.7%	6 403 619	48.3%	5 733 348	50.6%
Pinotage	26 285 911	7.0%	18 212 235	5.9%	14 464 420	4.9%	7 215 452	27.4%	4 470 743	24.5%	4 239 254	29.3%	5 281 391	20.1%	2 357 760	12.9%	2 200 899	15.2%	13 789 068	52.5%	11 383 733	62.5%	8 024 267	55.5%
Shiraz	25 379 382	6.8%	21 064 146	6.8%	20 111 074	6.9%	10 175 589	40.1%	6 249 541	29.7%	6 216 757	30.9%	4 937 239	19.5%	3 097 658	14.7%	2 393 623	11.9%	10 266 554	40.5%	11 716 947	55.6%	11 500 695	57.2%
Other red	61 112 469	16.4%	43 412 526	14.0%	41 376 063	14.2%	25 908 644	42.4%	20 141 903	46.4%	17 251 580	41.7%	9 542 970	15.6%	6 145 070	14.2%	7 529 668	18.2%	25 660 855	42.0%	17 125 552	39.4%	16 594 815	40.1%
<b>Total red</b>	<b>163 742 947</b>	<b>43.9%</b>	<b>120 241 375</b>	<b>38.8%</b>	<b>106 211 697</b>	<b>36.3%</b>	<b>64 739 191</b>	<b>39.5%</b>	<b>46 628 170</b>	<b>38.8%</b>	<b>40 963 351</b>	<b>38.6%</b>	<b>27 202 226</b>	<b>16.6%</b>	<b>13 968 412</b>	<b>11.6%</b>	<b>13 843 008</b>	<b>13.0%</b>	<b>71 801 532</b>	<b>43.9%</b>	<b>59 644 793</b>	<b>49.6%</b>	<b>51 405 340</b>	<b>48.4%</b>
Chardonnay	16 799 945	4.5%	12 617 263	4.1%	15 112 561	5.2%	11 786 600	70.2%	7 905 678	62.7%	10 531 305	69.7%	1 823 329	10.9%	1 670 518	13.2%	1 533 783	10.1%	3 190 015	19.0%	3 041 068	24.1%	3 047 473	20.2%
Chenin blanc	45 914 545	12.3%	43 122 182	13.9%	52 532 868	18.0%	27 135 954	59.1%	22 577 933	52.4%	24 732 723	47.1%	7 682 631	16.7%	8 473 557	19.7%	12 422 046	23.6%	11 095 961	24.2%	12 070 692	28.0%	15 378 099	29.3%
Colombar	51 119 735	13.7%	36 431 033	11.7%	36 750 936	12.6%	15 341 337	30.0%	17 446 745	47.9%	17 511 226	47.6%	34 669 683	67.8%	18 253 809	50.1%	16 462 706	44.8%	1 108 715	2.2%	730 479	2.0%	2 777 005	7.6%
Sauvignon blanc	10 451 135	2.8%	11 404 757	3.7%	12 509 559	4.3%	6 898 454	66.0%	7 586 836	66.5%	8 004 764	64.0%	1 516 396	14.5%	1 804 162	15.8%	1 814 767	14.5%	2 036 286	19.5%	2 013 759	17.7%	2 690 028	21.5%
Other white	84 861 563	22.8%	86 299 253	27.8%	69 269 405	23.7%	44 619 629	52.6%	37 108 658	43.0%	28 546 640	41.2%	29 572 900	34.8%	39 284 787	45.5%	32 460 648	46.9%	10 669 034	12.6%	9 905 808	11.5%	8 262 116	11.9%
<b>Total white</b>	<b>209 146 923</b>	<b>56.1%</b>	<b>189 874 488</b>	<b>61.2%</b>	<b>186 175 329</b>	<b>63.7%</b>	<b>105 781 974</b>	<b>50.6%</b>	<b>92 625 850</b>	<b>48.8%</b>	<b>89 326 658</b>	<b>48.0%</b>	<b>75 264 939</b>	<b>36.0%</b>	<b>69 486 833</b>	<b>36.6%</b>	<b>64 693 950</b>	<b>34.7%</b>	<b>28 100 011</b>	<b>13.4%</b>	<b>27 761 806</b>	<b>14.6%</b>	<b>32 154 721</b>	<b>17.3%</b>
<b>TOTAL</b>	<b>372 889 870</b>	<b>100.0%</b>	<b>310 115 863</b>	<b>100.0%</b>	<b>292 387 026</b>	<b>100.0%</b>	<b>170 521 165</b>	<b>45.7%</b>	<b>139 254 020</b>	<b>44.9%</b>	<b>130 290 009</b>	<b>44.6%</b>	<b>102 467 165</b>	<b>27.5%</b>	<b>83 455 245</b>	<b>26.9%</b>	<b>78 536 958</b>	<b>26.9%</b>	<b>99 901 543</b>	<b>26.8%</b>	<b>87 406 599</b>	<b>28.2%</b>	<b>83 560 061</b>	<b>28.6%</b>

TABLE 4:

## STOCK SITUATION - VARIOUS REGIONS, % DECREASE OR INCREASE IN STOCK LEVELS

	TOTAL			LK, ROB & WORC			OLIFANTS- & ORANGE			STB, PRL & MALM		
	2008	2009	±	2008	2009	±	2008	2009	±	2008	2009	±
	litres	litres		litres	litres		litres	litres		litres	litres	
Cabernet Sauvignon	24 306 677	18 939 419	-22.1%	9 810 132	8 441 425	-14.0%	1 481 604	945 779	-36.2%	13 014 942	9 552 215	-26.6%
Merlot	13 245 791	11 320 722	-14.5%	5 955 851	4 814 335	-19.2%	886 320	773 039	-12.8%	6 403 619	5 733 348	-10.5%
Pinotage	18 212 235	14 464 420	-20.6%	4 470 743	4 239 254	-5.2%	2 357 760	2 200 899	-6.7%	11 383 733	8 024 267	-29.5%
Shiraz	21 064 146	20 111 074	-4.5%	6 249 541	6 216 757	-0.5%	3 097 658	2 393 623	-22.7%	11 716 947	11 500 695	-1.8%
Other red	43 412 526	41 376 063	-4.7%	20 141 903	17 251 580	-14.3%	6 145 070	7 529 668	22.5%	17 125 552	16 594 815	-3.1%
<b>Total red</b>	<b>120 241 375</b>	<b>106 211 697</b>	<b>-11.7%</b>	<b>46 628 170</b>	<b>40 963 351</b>	<b>-12.1%</b>	<b>13 968 412</b>	<b>13 843 008</b>	<b>-0.9%</b>	<b>59 644 793</b>	<b>51 405 340</b>	<b>-13.8%</b>
Chardonnay	12 617 263	15 112 561	19.8%	7 905 678	10 531 305	33.2%	1 670 518	1 533 783	-8.2%	3 041 068	3 047 473	0.2%
Chenin blanc	43 122 182	52 532 868	21.8%	22 577 933	24 732 723	9.5%	8 473 557	12 422 046	46.6%	12 070 692	15 378 099	27.4%
Colombar	36 431 033	36 750 936	0.9%	17 446 745	17 511 226	0.4%	18 253 809	16 462 706	-9.8%	730 479	2 777 005	280.2%
Sauvignon blanc	11 404 757	12 509 559	9.7%	7 586 836	8 004 764	5.5%	1 804 162	1 814 767	0.6%	2 013 759	2 690 028	33.6%
Other white	86 299 253	69 269 405	-19.7%	37 108 658	28 546 640	-23.1%	39 284 787	32 460 648	-17.4%	9 905 808	8 262 116	-16.6%
<b>Total white</b>	<b>189 874 488</b>	<b>186 175 329</b>	<b>-1.9%</b>	<b>92 625 850</b>	<b>89 326 658</b>	<b>-3.6%</b>	<b>69 486 833</b>	<b>64 693 950</b>	<b>-6.9%</b>	<b>27 761 806</b>	<b>32 154 721</b>	<b>15.8%</b>
<b>TOTAL</b>	<b>310 115 863</b>	<b>292 387 026</b>	<b>-5.7%</b>	<b>139 254 020</b>	<b>130 290 009</b>	<b>-6.4%</b>	<b>83 455 245</b>	<b>78 536 958</b>	<b>-5.9%</b>	<b>87 406 599</b>	<b>83 560 061</b>	<b>-4.4%</b>

TABLE 5:  
STOCK SITUATION IN THE LITTLE KAROO, WORCESTER AND ROBERTSON

LITRES

	2009 VINTAGE			PREVIOUS VINTAGES			TOTAL
	CONTRACTED	NOT CONTRACTED	BOTTLED	CONTRACTED	NOT CONTRACTED	BOTTLED	
<b>RED WINE</b>							
Cabernet Sauvignon	7 990 628	55 445	4 826	315 223	3 545	71 759	8 441 425
Merlot	4 494 551	73 474	2 116	185 095	8 060	51 039	4 814 335
Pinotage	3 978 358		15 785	182 085		63 027	4 239 254
Shiraz	5 488 003	222 821	2 700	410 619	7 880	84 735	6 216 758
Other red	16 115 727	48 200	135 661	715 599		236 394	17 251 580
<b>Total red</b>	<b>38 067 267</b>	<b>399 940</b>	<b>161 087</b>	<b>1 808 621</b>	<b>19 485</b>	<b>506 953</b>	<b>40 963 353</b>
<b>WHITE WINE</b>							
Chardonnay	9 477 852	665 732	62 715	283 792	17 592	23 623	10 531 306
Chenin blanc	23 661 302	599 336	117 221	344 314		10 550	24 732 723
Colombar	16 993 989	124 230	19 757	372 528		722	17 511 226
Sauvignon blanc	6 823 796	694 191	82 764	362 641	31 126	10 247	8 004 765
Other white	26 889 197	1 051 751	155 345	379 191	1 675	69 482	28 546 641
<b>Total white</b>	<b>83 846 136</b>	<b>3 135 240</b>	<b>437 802</b>	<b>1 742 466</b>	<b>50 393</b>	<b>114 624</b>	<b>89 326 661</b>
<b>TOTAL</b>	<b>121 913 403</b>	<b>3 535 179</b>	<b>598 890</b>	<b>3 551 087</b>	<b>69 878</b>	<b>621 577</b>	<b>130 290 013</b>

TABLE 6:  
STOCK SITUATION IN THE OLIFANTS RIVER AND ORANGE RIVER

LITRES

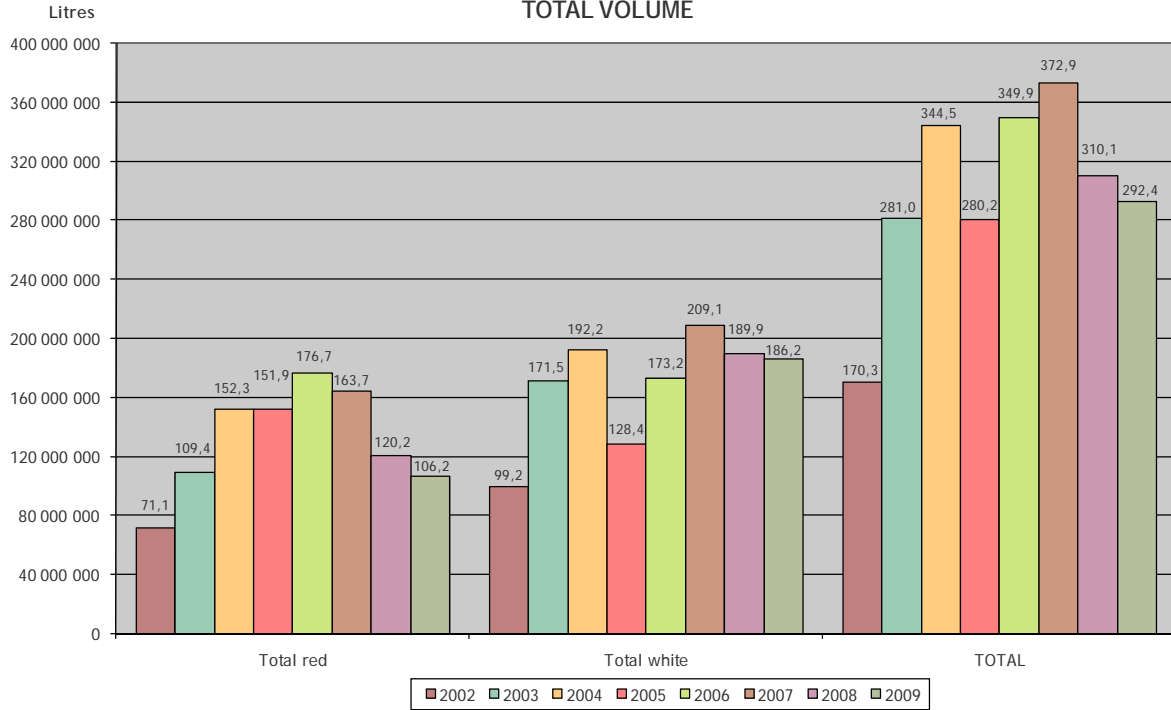
	2009 VINTAGE			PREVIOUS VINTAGES			TOTAL
	CONTRACTED	NOT CONTRACTED	BOTTLED	CONTRACTED	NOT CONTRACTED	BOTTLED	
<b>RED WINE</b>							
Cabernet Sauvignon	765 832		5 112	151 926		22 909	945 779
Merlot	698 263			58 815		15 961	773 039
Pinotage	2 016 608		9 836	153 950		20 505	2 200 899
Shiraz	2 198 724		15 312	132 233		47 354	2 393 623
Other red	7 134 690	119 422	31 004	128 054	33 200	83 297	7 529 667
<b>Total red</b>	<b>12 814 117</b>	<b>119 422</b>	<b>61 264</b>	<b>624 978</b>	<b>33 200</b>	<b>190 025</b>	<b>13 843 007</b>
<b>WHITE WINE</b>							
Chardonnay	1 273 213	186 555	24 541	29 757		19 718	1 533 783
Chenin blanc	10 682 657	1 271 134	58 861	407 104		2 291	12 422 046
Colombar	16 292 053	13 233	6 743	149 000		1 676	16 462 706
Sauvignon blanc	1 731 549	57 000	17 808			8 411	1 814 767
Other white	31 768 277	157 181	232 723	192 460		110 007	32 460 648
<b>Total white</b>	<b>61 747 749</b>	<b>1 685 103</b>	<b>340 676</b>	<b>778 321</b>		<b>142 102</b>	<b>64 693 951</b>
<b>TOTAL</b>	<b>74 561 866</b>	<b>1 804 525</b>	<b>401 940</b>	<b>1 403 299</b>	<b>33 200</b>	<b>332 127</b>	<b>78 536 957</b>

TABLE 7:  
STOCK SITUATION IN STELLENBOSCH, PAARL AND MALMESBURY

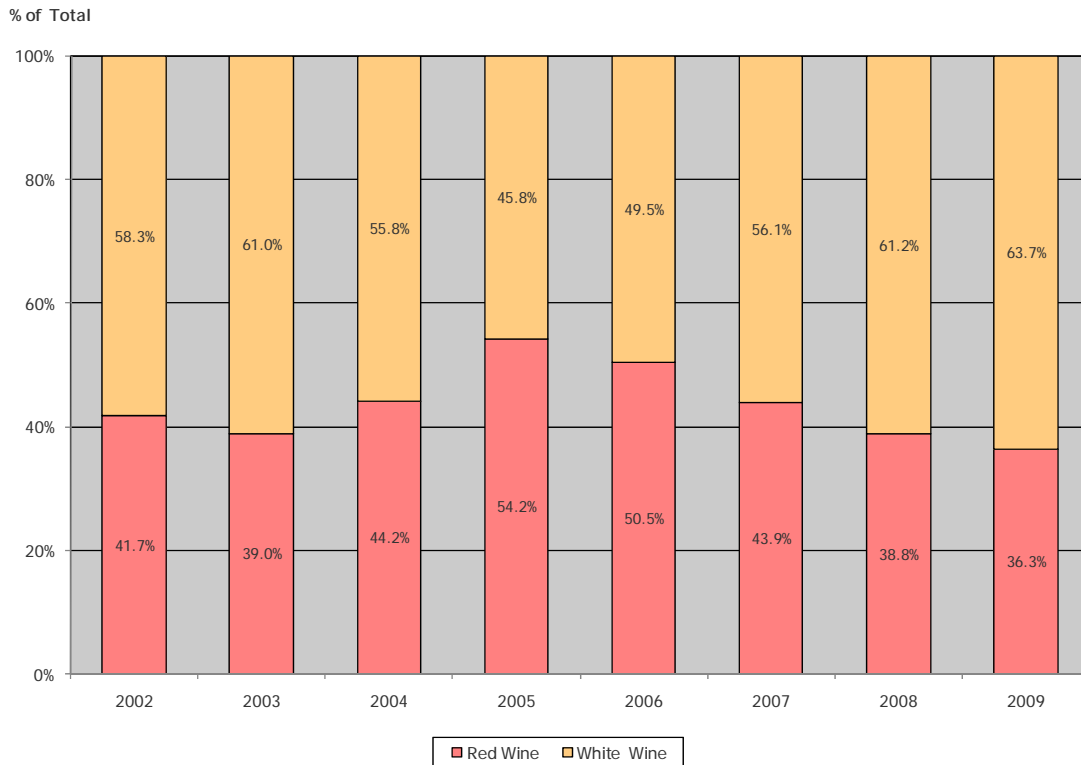
LITRES

	2009 VINTAGE			PREVIOUS VINTAGES			TOTAL
	CONTRACTED	NOT CONTRACTED	BOTTLED	CONTRACTED	NOT CONTRACTED	BOTTLED	
<b>RED WINE</b>							
Cabernet Sauvignon	7 841 128	78 891	43 736	1 399 362	12 947	176 151	9 552 215
Merlot	4 790 805	3 150	56 790	737 242	22 225	123 136	5 733 348
Pinotage	6 355 417	236 014	61 782	1 178 916	15 259	176 879	8 024 267
Shiraz	9 810 904	92 276	18 092	1 280 836		298 587	11 500 695
Other red	12 080 024	629 418	303 086	2 898 571	108 082	575 634	16 594 815
<b>Total red</b>	<b>40 878 278</b>	<b>1 039 749</b>	<b>483 486</b>	<b>7 494 927</b>	<b>158 513</b>	<b>1 350 387</b>	<b>51 405 340</b>
<b>WHITE WINE</b>							
Chardonnay	2 490 124	140 350	80 164	282 555		54 280	3 047 473
Chenin blanc	13 717 322	1 317 284	155 508	156 807		31 177	15 378 099
Colombar	2 683 484	93 521					2 777 005
Sauvignon blanc	2 137 207	220 972	125 654	60 009	46 196	99 990	2 690 028
Other white	6 828 756	485 173	582 778	231 899	34 000	99 510	8 262 116
<b>Total white</b>	<b>27 856 893</b>	<b>2 257 300</b>	<b>944 104</b>	<b>731 270</b>	<b>80 196</b>	<b>284 957</b>	<b>32 154 720</b>
<b>TOTAL</b>	<b>68 735 171</b>	<b>3 297 049</b>	<b>1 427 589</b>	<b>8 226 197</b>	<b>238 709</b>	<b>1 635 344</b>	<b>83 560 060</b>

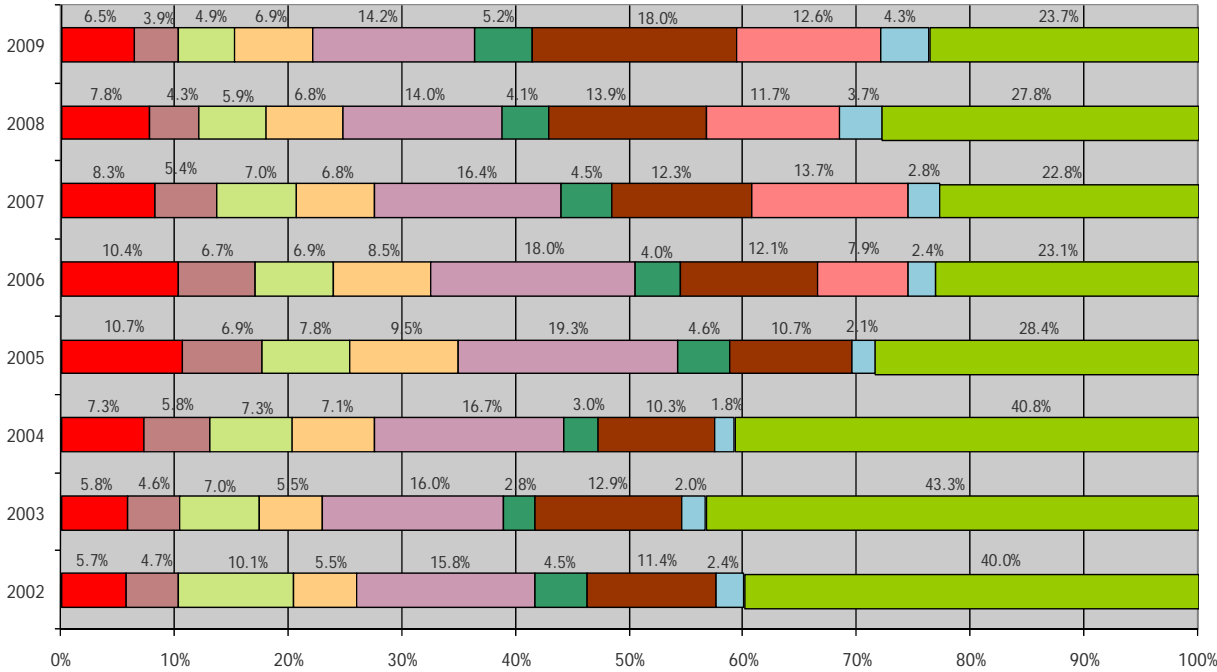
STOCK SITUATION OF NATURAL WINE IN THE INDUSTRY - OCTOBER  
TOTAL VOLUME



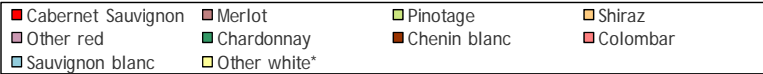
STOCK SITUATION - WHITE WINE VS RED WINE  
% OF TOTAL STOCK



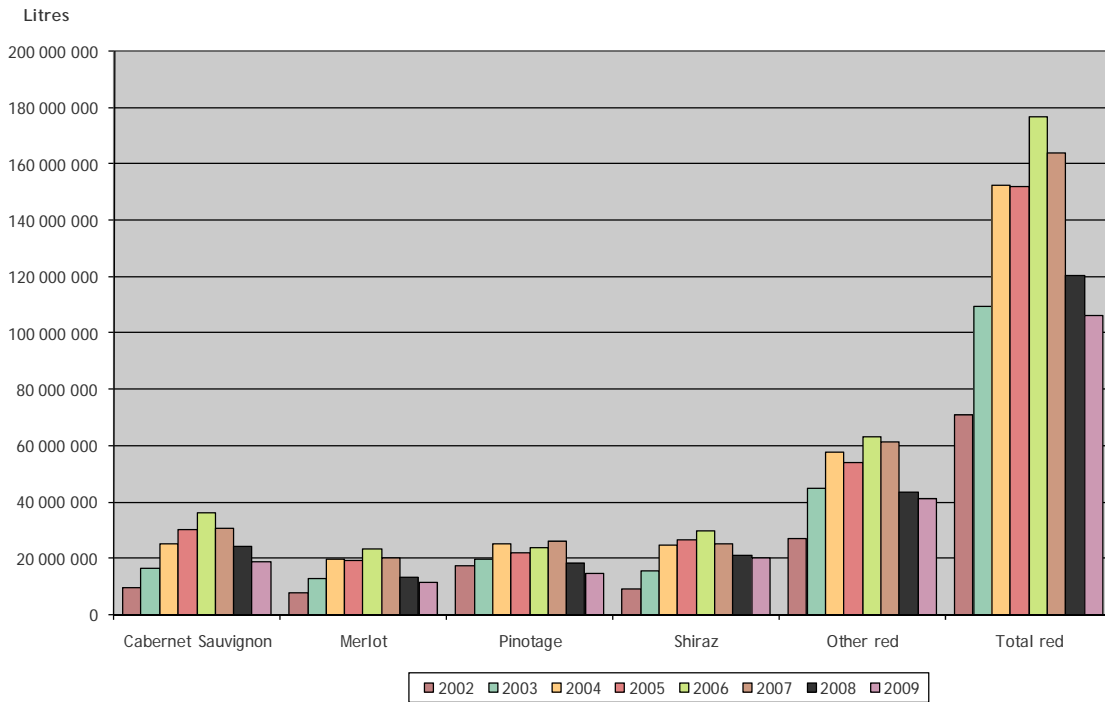
**STOCK SITUATION OF NATURAL WINE IN THE INDUSTRY- OCTOBER  
VARIETIES AS PERCENTAGE OF TOTAL**



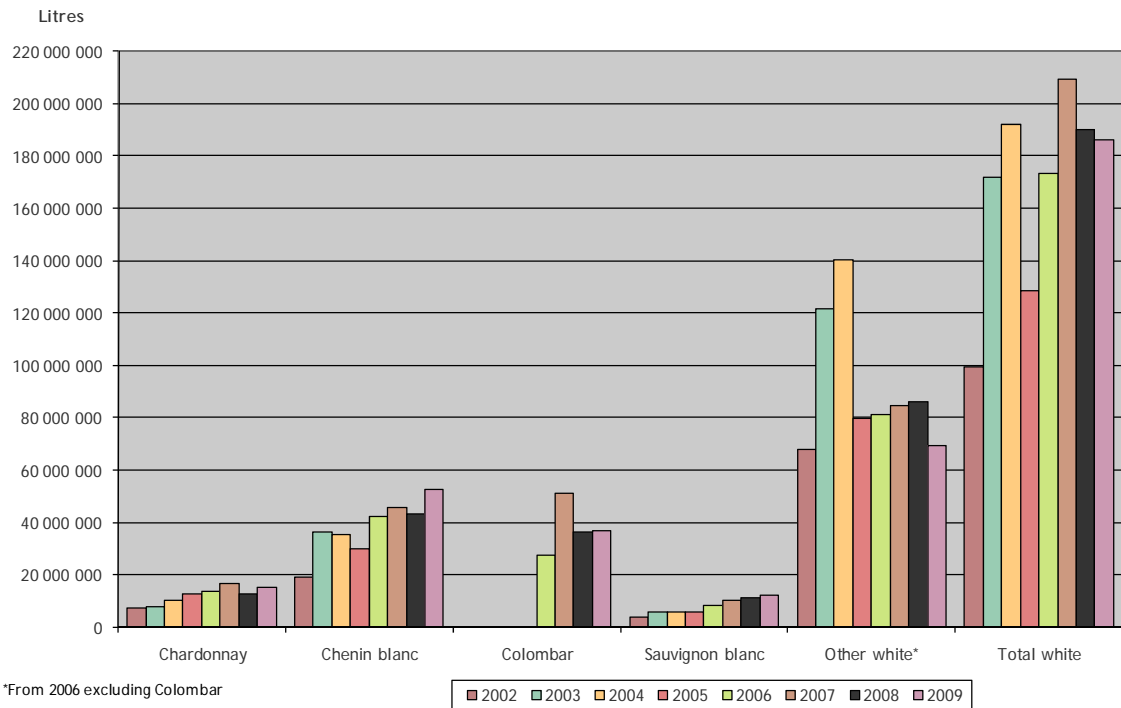
\*From 2006 excluding Colombar



### STOCK SITUATION OF NATURAL RED WINE IN THE INDUSTRY - OCTOBER

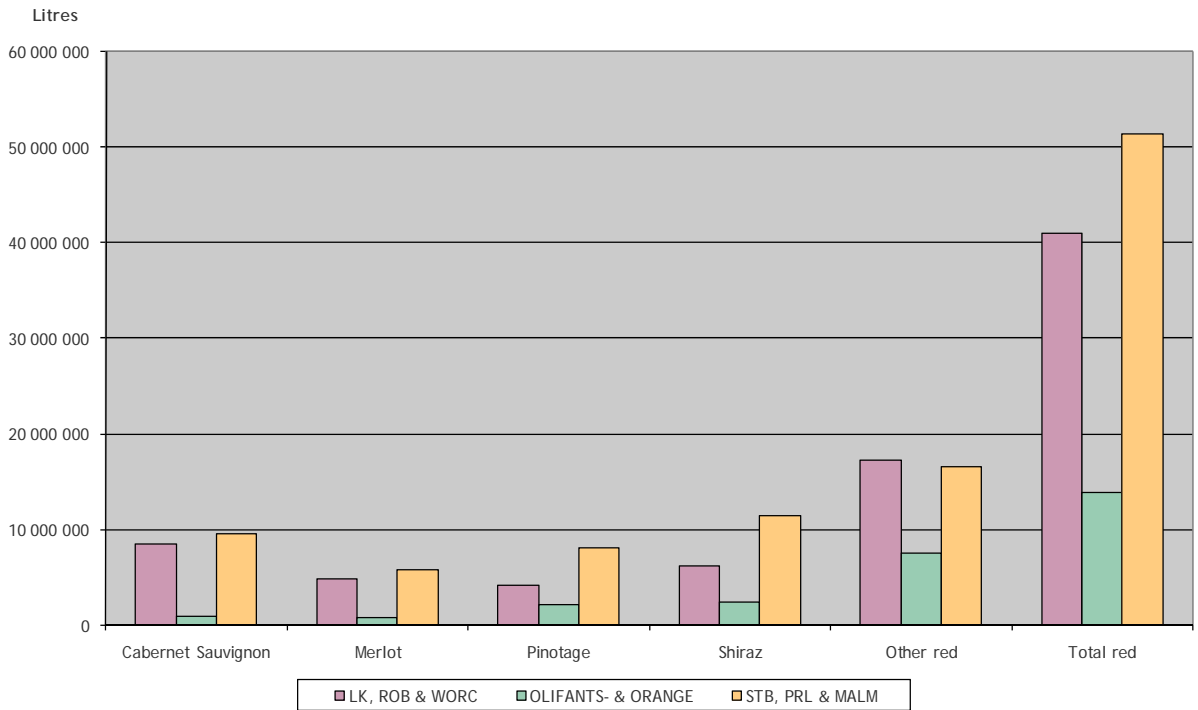


### STOCK SITUATION OF NATURAL WHITE WINE IN THE INDUSTRY - OCTOBER

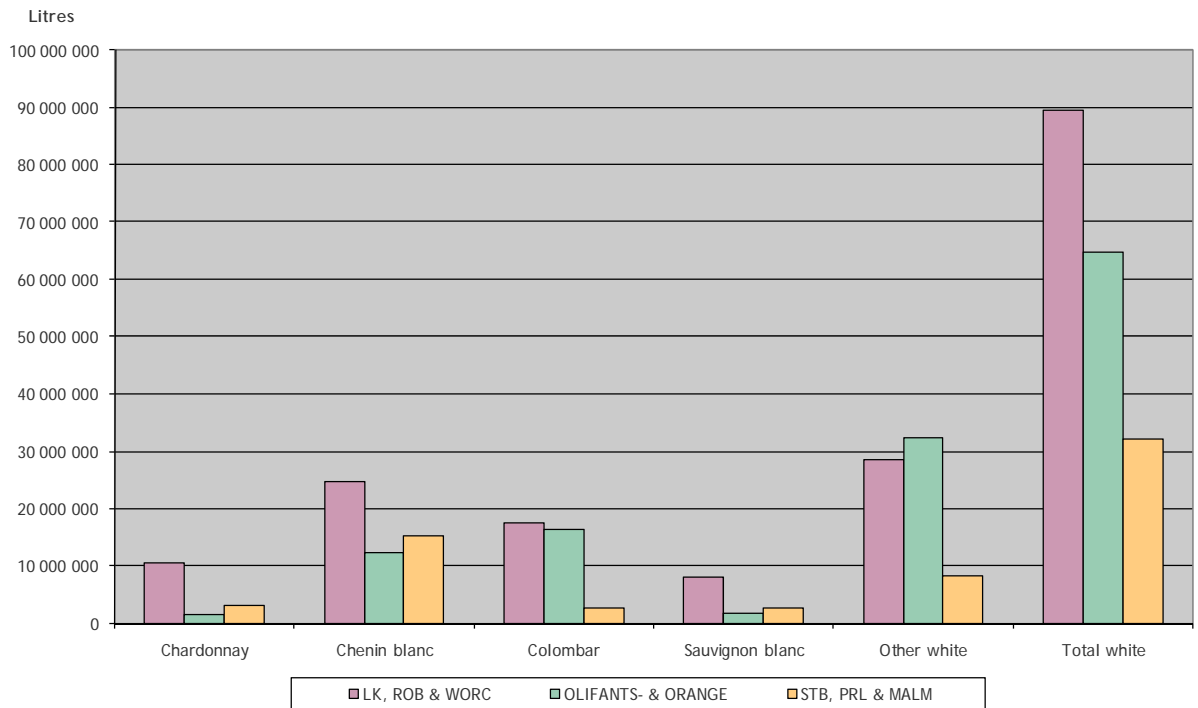


\*From 2006 excluding Colombar

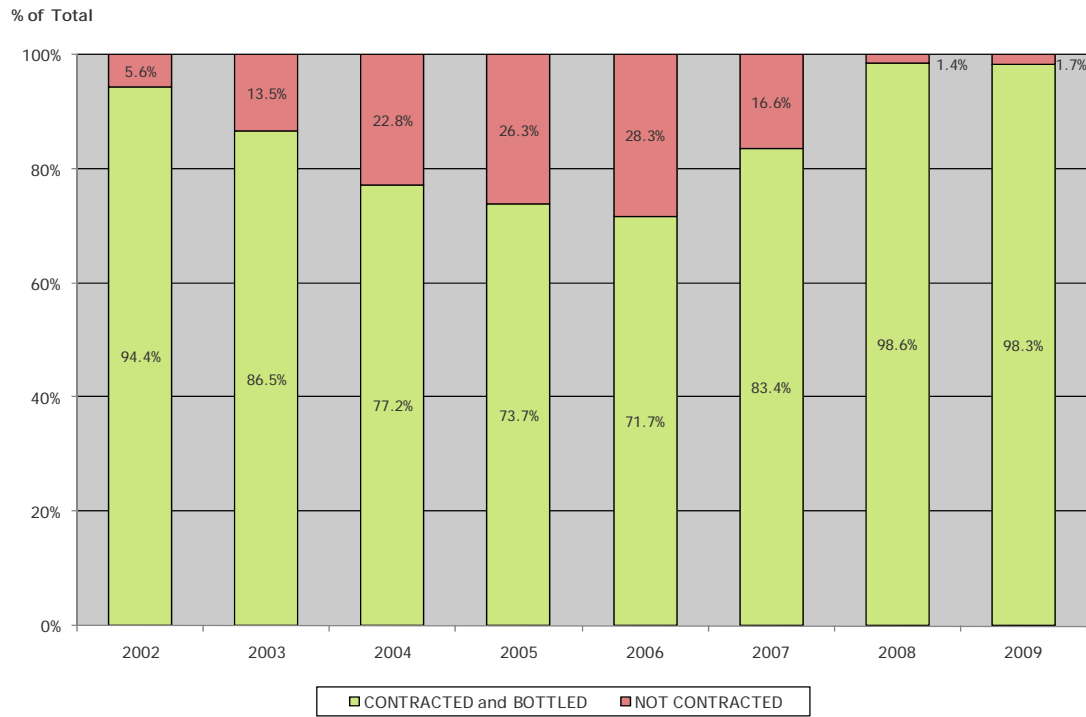
### STOCK SITUATION OF NATURAL RED WINE IN THE VARIOUS REGIONS - OCTOBER 2009



### STOCK SITUATION OF NATURAL WHITE WINE IN THE VARIOUS REGIONS - OCTOBER 2009



### CONTRACTED AND BOTTLED VS NOT CONTRACTED NATURAL RED WINE



### CONTRACTED AND BOTTLED VS NOT CONTRACTED NATURAL WHITE WINE

