

TABLE 1:  
STOCK SITUATION IN THE INDUSTRY - TOTAL

	CURRENT VINTAGE									PREVIOUS VINTAGES									TOTAL						
	2006	2007	2008	2006	2007	2008	2006	2007	2008	2006	2007	2008	2006	2007	2008	2006	2007	2008	2006		2007		2008		
	CONTRACTED			NOT CONTRACTED			BOTTLED			CONTRACTED			NOT CONTRACTED			BOTTLED			litres	% of total	litres	% of total	litres	% of total	
<b>RED WINE</b>																									
Cabernet Sauvignon	16 677 855	17 853 145	21 074 703	9 865 177	5 621 872	263 851	9 698	22 783	81 432	5 969 715	6 079 885	2 608 427	3 250 027	778 880	15 917	450 336	500 515	262 347	36 222 808	10.4%	30 857 080	8.3%	24 306 677	7.8%	
Merlot	10 379 038	10 429 162	11 256 410	7 134 279	4 396 438	492 559	1 301	11 875	22 755	3 799 194	3 463 993	1 256 842	1 854 076	1 426 502	60 824	309 294	380 135	156 401	23 477 182	6.7%	20 108 105	5.4%	13 245 791	4.3%	
Pinotage	14 591 859	19 744 900	14 302 921	3 849 014	2 856 651	230 448	10 591	85 494	142 609	3 019 424	2 654 038	3 142 551	1 859 186	398 617	70 646	679 167	546 211	323 060	24 009 241	6.9%	26 285 911	7.0%	18 212 235	5.9%	
Shiraz	16 330 558	18 046 767	17 844 059	7 366 059	2 827 958	147 751	20 420	27 384	69 595	4 167 901	3 262 946	2 623 270	1 497 192	616 418	12 599	526 120	597 909	366 872	29 908 250	8.5%	25 379 382	6.8%	21 064 146	6.8%	
Other red	33 257 940	37 705 357	32 206 895	10 461 829	6 525 289	328 026	477 520	648 259	408 537	14 797 743	12 604 868	9 548 400	2 904 930	1 776 190	106 576	1 165 659	1 852 506	814 092	63 065 621	18.0%	61 112 469	16.4%	43 412 526	14.0%	
<b>Total red</b>	<b>91 237 250</b>	<b>103 779 331</b>	<b>96 684 988</b>	<b>38 676 358</b>	<b>22 228 208</b>	<b>1 462 635</b>	<b>519 530</b>	<b>795 795</b>	<b>724 928</b>	<b>31 753 977</b>	<b>28 065 730</b>	<b>19 179 490</b>	<b>11 365 411</b>	<b>4 996 607</b>	<b>266 562</b>	<b>3 130 576</b>	<b>3 877 276</b>	<b>1 922 772</b>	<b>176 683 102</b>	<b>50.5%</b>	<b>163 742 947</b>	<b>43.9%</b>	<b>120 241 375</b>	<b>38.8%</b>	
<b>WHITE WINE</b>																									
Chardonnay	10 756 305	10 973 294	10 649 318	2 169 158	3 190 645	554 604	228 723	389 751	258 069	550 346	1 072 202	903 040	52 248	1 025 525	166 155	136 613	148 528	86 077	13 893 393	4.0%	16 799 945	4.5%	12 617 263	4.1%	
Chenin blanc	35 345 189	40 937 392	38 909 459	5 978 177	2 514 482	2 287 401	552 854	810 164	451 790	185 346	1 094 208	1 354 579	11 300	405 996		186 819	152 303	118 953	42 259 685	12.1%	45 914 545	12.3%	43 122 182	13.9%	
Colombar	26 416 607	49 049 654	33 915 349	1 190 033	1 429 761	1 611 779	25 687	33 364	39 587	107 301	259 456	838 569		339 338		8 171	8 162	25 749	27 747 799	7.9%	51 119 735	13.7%	36 431 033	11.7%	
Sauvignon blanc	6 648 095	7 415 599	9 338 423	1 162 343	1 493 616	1 016 351	331 035	505 562	394 468	89 285	359 805	370 154	23 365	612 755	193 741	54 156	63 798	91 620	8 308 279	2.4%	10 451 135	2.8%	11 404 757	3.7%	
Other white	73 430 441	71 158 127	79 601 535	4 217 140	8 879 714	2 815 539	1 628 461	1 650 633	930 122	1 200 891	2 326 560	2 637 463	130 486	421 464	58 737	367 329	425 065	255 857	80 974 748	23.1%	84 861 563	22.8%	86 299 253	27.8%	
<b>Total white</b>	<b>152 596 637</b>	<b>179 534 066</b>	<b>172 414 084</b>	<b>14 716 851</b>	<b>17 508 218</b>	<b>8 285 674</b>	<b>2 766 760</b>	<b>3 389 474</b>	<b>2 074 036</b>	<b>2 133 169</b>	<b>5 112 231</b>	<b>6 103 805</b>	<b>217 399</b>	<b>2 805 078</b>	<b>418 633</b>	<b>753 088</b>	<b>797 856</b>	<b>578 256</b>	<b>173 183 904</b>	<b>49.5%</b>	<b>209 146 923</b>	<b>56.1%</b>	<b>189 874 488</b>	<b>61.2%</b>	
<b>TOTAL</b>	<b>243 833 887</b>	<b>283 313 397</b>	<b>269 099 072</b>	<b>53 393 209</b>	<b>39 736 426</b>	<b>9 748 309</b>	<b>3 286 290</b>	<b>4 185 269</b>	<b>2 798 964</b>	<b>33 887 146</b>	<b>33 177 961</b>	<b>25 283 295</b>	<b>11 582 810</b>	<b>7 801 685</b>	<b>685 195</b>	<b>3 883 664</b>	<b>4 675 132</b>	<b>2 501 028</b>	<b>349 867 006</b>	<b>100.0%</b>	<b>372 889 870</b>	<b>100.0%</b>	<b>310 115 863</b>	<b>100.0%</b>	
Fortified wine	3 579 979	6 533 614	6 603 600	142 486	3 375	37 240	105 625	214 855	199 580	392 487	599 476	852 299	69 241	38 489	51 864	312 783	289 702	238 579	4 602 601		7 679 511		7 983 162		
Sparkling wine						576	143 422		62 120							129 989		43 180	273 411				105 876		
Wine for brandy	86 914	12 250								434 452									521 366		12 250				
Distilling wine	1 455 822	1 087 820	6 749 471	282 305	41 237	164 629				45 116	87 039	4 254	16 200		2 553				1 799 443		1 216 096		6 920 907		
Grape juice concentrate and grape juice	4 192 331	14 382 984	6 407 398		32 307	8 883	232 712	274 450	235 985							78 808	35 471	37 173	4 503 851		14 725 212		6 689 439		
Destined for sweetening	5 837 525	3 847 405	3 462 248	244 809	38 988	76					73 011		26 726						6 109 060		3 959 404		3 462 326		

TABLE 2:  
STOCK SITUATION - CONTRACTED and BOTTLED VS NOT CONTRACTED

	CURRENT VINTAGE												TOTAL												
	2006	% of total	2007	% of total	2008	% of total	2006	% of total	2007	% of total	2008	% of total	2006		2007		2008								
	CONTRACTED and BOTTLED						NOT CONTRACTED						litre	% of total	litre	% of total	litre	% of total							
<b>RED WINE</b>																									
Cabernet Sauvignon	23 107 604	63.8%	24 456 328	79.3%	24 026 909	98.8%	13 115 204	36.2%	6 400 752	20.7%	279 768	1.2%	36 222 808	10.4%	30 857 080	8.3%	24 306 677	7.8%							
Merlot	14 488 827	61.7%	14 285 165	71.0%	12 692 408	95.8%	8 988 355	38.3%	5 822 940	29.0%	553 383	4.2%	23 477 182	6.7%	20 108 105	5.4%	13 245 791	4.3%							
Pinotage	18 301 041	76.2%	23 030 643	87.6%	17 911 141	98.3%	5 708 200	23.8%	3 255 268	12.4%	301 094	1.7%	24 009 241	6.9%	26 285 911	7.0%	18 212 235	5.9%							
Shiraz	21 044 999	70.4%	21 935 006	86.4%	20 903 796	99.2%	8 863 251	29.6%	3 444 376	13.6%	160 350	0.8%	29 908 250	8.5%	25 379 382	6.8%	21 064 146	6.8%							
Other red	49 698 862	78.8%	52 810 990	86.4%	42 977 924	99.0%	13 366 759	21.2%	8 301 479	13.6%	434 602	1.0%	63 065 621	18.0%	61 112 469	16.4%	43 412 526	14.0%							
<b>Total red</b>	<b>126 641 333</b>	<b>71.7%</b>	<b>136 518 132</b>	<b>83.4%</b>	<b>118 512 178</b>	<b>98.6%</b>	<b>50 041 769</b>	<b>28.3%</b>	<b>27 224 815</b>	<b>16.6%</b>	<b>1 729 197</b>	<b>1.4%</b>	<b>176 683 102</b>	<b>50.5%</b>	<b>163 742 947</b>	<b>43.9%</b>	<b>120 241 375</b>	<b>38.8%</b>							
<b>WHITE WINE</b>																									
Chardonnay	11 671 987	84.0%	12 583 775	74.9%	11 896 504	94.3%	2 221 406	16.0%	4 216 170	25.1%	720 759	5.7%	13 893 393	4.0%	16 799 945	4.5%	12 617 263	4.1%							
Chenin Blanc	36 270 208	85.8%	42 994 067	93.6%	40 834 781	94.7%	5 989 477	14.2%	2 920 478	6.4%	2 287 401	5.3%	42 259 685	12.1%	45 914 545	12.3%	43 122 182	13.9%							
Colombar	26 557 766	95.7%	49 350 636	96.5%	34 819 254	95.6%	1 190 033	4.3%	1 769 099	3.5%	1 611 779	4.4%	27 747 799	7.9%	51 119 735	13.7%	36 431 033	11.7%							
Sauvignon blanc	7 122 571	85.7%	8 344 764	79.8%	10 194 665	89.4%	1 185 708	14.3%	2 106 371	20.2%	1 210 092	10.6%	8 308 279	2.4%	10 451 135	2.8%	11 404 757	3.7%							
Other white	76 627 122	94.6%	75 560 385	89.0%	83 424 977	96.7%	4 347 626	5.4%	9 301 178	11.0%	2 874 276	3.3%	80 974 748	23.1%	84 861 563	22.8%	86 299 253	27.8%							
<b>Total white</b>	<b>158 249 654</b>	<b>91.4%</b>	<b>188 833 627</b>	<b>90.3%</b>	<b>181 170 181</b>	<b>95.4%</b>	<b>14 934 250</b>	<b>8.6%</b>	<b>20 313 296</b>	<b>9.7%</b>	<b>8 704 307</b>	<b>4.6%</b>	<b>173 183 904</b>	<b>49.5%</b>	<b>209 146 923</b>	<b>56.1%</b>	<b>189 874 488</b>	<b>61.2%</b>							
<b>TOTAL</b>	<b>284 890 987</b>	<b>81.4%</b>	<b>325 351 759</b>	<b>87.3%</b>	<b>299 682 359</b>	<b>96.6%</b>	<b>64 976 019</b>	<b>18.6%</b>	<b>47 538 111</b>	<b>12.7%</b>	<b>10 433 504</b>	<b>3.4%</b>	<b>349 867 006</b>	<b>100.0%</b>	<b>372 889 870</b>	<b>100.0%</b>	<b>310 115 863</b>	<b>100.0%</b>							

**TABLE 3:  
STOCK SITUATION - VARIOUS REGIONS' STOCK AS % OF TOTAL**

	TOTAL						LK, ROB & WORC						OLIFANTS- & ORANGE						STB, PRL & MALM					
	2006		2007		2008		2006		2007		2008		2006		2007		2008		2006		2007		2008	
	litres	% of total	litres	% of total	litres	% of total	litres	% of total	litres	% of total	litres	% of total	litres	% of total	litres	% of total	litres	% of total	litres	% of total	litres	% of total	litres	% of total
Cabernet Sauvignon	36 222 808	10.4%	30 857 080	8.3%	24 306 677	7.8%	14 399 596	39.8%	13 402 145	43.4%	9 810 132	40.4%	3 495 489	9.6%	3 951 429	12.8%	1 481 604	6.1%	18 327 723	50.6%	13 503 507	43.8%	13 014 942	53.5%
Merlot	23 477 182	6.7%	20 108 105	5.4%	13 245 791	4.3%	9 795 610	41.7%	8 037 361	40.0%	5 955 851	45.0%	3 413 209	14.5%	3 489 197	17.4%	886 320	6.7%	10 268 363	43.7%	8 581 548	42.7%	6 403 619	48.3%
Pinotage	24 009 241	6.9%	26 285 911	7.0%	18 212 235	5.9%	7 628 333	31.8%	7 215 452	27.4%	4 470 743	24.5%	4 728 545	19.7%	5 281 391	20.1%	2 357 760	12.9%	11 652 363	48.5%	13 789 068	52.5%	11 383 733	62.5%
Shiraz	29 908 250	8.5%	25 379 382	6.8%	21 064 146	6.8%	11 907 601	39.8%	10 175 589	40.1%	6 249 541	29.7%	5 152 145	17.2%	4 937 239	19.5%	3 097 658	14.7%	12 848 505	43.0%	10 266 554	40.5%	11 716 947	55.6%
Other red	63 065 621	18.0%	61 112 469	16.4%	43 412 526	14.0%	28 311 497	44.9%	25 908 644	42.4%	20 141 903	46.4%	12 807 660	20.3%	9 542 970	15.6%	6 145 070	14.2%	21 946 464	34.8%	25 660 855	42.0%	17 125 552	39.4%
<b>Total red</b>	<b>176 683 102</b>	<b>50.5%</b>	<b>163 742 947</b>	<b>43.9%</b>	<b>120 241 375</b>	<b>38.8%</b>	<b>72 042 637</b>	<b>40.8%</b>	<b>64 739 191</b>	<b>39.5%</b>	<b>46 628 170</b>	<b>38.8%</b>	<b>29 597 048</b>	<b>16.8%</b>	<b>27 202 226</b>	<b>16.6%</b>	<b>13 968 412</b>	<b>11.6%</b>	<b>75 043 418</b>	<b>42.5%</b>	<b>71 801 532</b>	<b>43.9%</b>	<b>59 644 793</b>	<b>49.6%</b>
Chardonnay	13 893 393	4.0%	16 799 945	4.5%	12 617 263	4.1%	8 938 167	64.3%	11 786 600	70.2%	7 905 678	62.7%	1 965 644	14.1%	1 823 329	10.9%	1 670 518	13.2%	2 989 581	21.5%	3 190 015	19.0%	3 041 068	24.1%
Chenin blanc	42 259 685	12.1%	45 914 545	12.3%	43 122 182	13.9%	19 631 420	46.5%	27 135 954	59.1%	22 577 933	52.4%	11 580 140	27.4%	7 682 631	16.7%	8 473 557	19.7%	11 048 126	26.1%	11 095 961	24.2%	12 070 692	28.0%
Colombar	27 747 799	7.9%	51 119 735	13.7%	36 431 033	11.7%	11 383 978	41.0%	15 341 337	30.0%	17 446 745	47.9%	15 719 978	56.7%	34 669 683	67.8%	18 253 809	50.1%	643 842	2.3%	1 108 715	2.2%	730 479	2.0%
Sauvignon blanc	8 308 279	2.4%	10 451 135	2.8%	11 404 757	3.7%	4 449 446	53.6%	6 898 454	66.0%	7 586 836	66.5%	1 602 588	19.3%	1 516 396	14.5%	1 804 162	15.8%	2 256 245	27.2%	2 036 286	19.5%	2 013 759	17.7%
Other white	80 974 748	23.1%	84 861 563	22.8%	86 299 253	27.8%	33 210 093	41.0%	44 619 629	52.6%	37 108 658	43.0%	38 001 088	46.9%	29 572 900	34.8%	39 284 787	45.5%	9 763 567	12.1%	10 669 034	12.6%	9 905 808	11.5%
<b>Total white</b>	<b>173 183 904</b>	<b>49.5%</b>	<b>209 146 923</b>	<b>56.1%</b>	<b>189 874 488</b>	<b>61.2%</b>	<b>77 613 104</b>	<b>44.8%</b>	<b>105 781 974</b>	<b>50.6%</b>	<b>92 625 850</b>	<b>48.8%</b>	<b>68 869 438</b>	<b>39.8%</b>	<b>75 264 939</b>	<b>36.0%</b>	<b>69 486 833</b>	<b>36.6%</b>	<b>26 701 361</b>	<b>15.4%</b>	<b>28 100 011</b>	<b>13.4%</b>	<b>27 761 806</b>	<b>14.6%</b>
<b>TOTAL</b>	<b>349 867 006</b>	<b>100.0%</b>	<b>372 889 870</b>	<b>100.0%</b>	<b>310 115 863</b>	<b>100.0%</b>	<b>149 655 741</b>	<b>42.8%</b>	<b>170 521 165</b>	<b>45.7%</b>	<b>139 254 020</b>	<b>44.9%</b>	<b>98 466 486</b>	<b>28.1%</b>	<b>102 467 165</b>	<b>27.5%</b>	<b>83 455 245</b>	<b>26.9%</b>	<b>101 744 779</b>	<b>29.1%</b>	<b>99 901 543</b>	<b>26.8%</b>	<b>87 406 599</b>	<b>28.2%</b>

**TABLE 4:  
STOCK SITUATION - VARIOUS REGIONS, % DECREASE OR INCREASE IN STOCK LEVELS**

	TOTAL			LK, ROB & WORC			OLIFANTS- & ORANGE			STB, PRL & MALM		
	2007	2008	±	2007	2008	±	2007	2008	±	2007	2008	±
	litres	litres		litres	litres		litres	litres		litres	litres	
Cabernet Sauvignon	30 857 080	24 306 677	-21.2%	13 402 145	9 810 132	-26.8%	3 951 429	1 481 604	-62.5%	13 503 507	13 014 942	-3.6%
Merlot	20 108 105	13 245 791	-34.1%	8 037 361	5 955 851	-25.9%	3 489 197	886 320	-74.6%	8 581 548	6 403 619	-25.4%
Pinotage	26 285 911	18 212 235	-30.7%	7 215 452	4 470 743	-38.0%	5 281 391	2 357 760	-55.4%	13 789 068	11 383 733	-17.4%
Shiraz	25 379 382	21 064 146	-17.0%	10 175 589	6 249 541	-38.6%	4 937 239	3 097 658	-37.3%	10 266 554	11 716 947	14.1%
Other red	61 112 469	43 412 526	-29.0%	25 908 644	20 141 903	-22.3%	9 542 970	6 145 070	-35.6%	25 660 855	17 125 552	-33.3%
<b>Total red</b>	<b>163 742 947</b>	<b>120 241 375</b>	<b>-26.6%</b>	<b>64 739 191</b>	<b>46 628 170</b>	<b>-28.0%</b>	<b>27 202 226</b>	<b>13 968 412</b>	<b>-48.6%</b>	<b>71 801 532</b>	<b>59 644 793</b>	<b>-16.9%</b>
Chardonnay	16 799 945	12 617 263	-24.9%	11 786 600	7 905 678	-32.9%	1 823 329	1 670 518	-8.4%	3 190 015	3 041 068	-4.7%
Chenin blanc	45 914 545	43 122 182	-6.1%	27 135 954	22 577 933	-16.8%	7 682 631	8 473 557	10.3%	11 095 961	12 070 692	8.8%
Colombar	51 119 735	36 431 033	-28.7%	15 341 337	17 446 745	13.7%	34 669 683	18 253 809	-47.3%	1 108 715	730 479	-34.1%
Sauvignon blanc	10 451 135	11 404 757	9.1%	6 898 454	7 586 836	10.0%	1 516 396	1 804 162	19.0%	2 036 286	2 013 759	-1.1%
Other white	84 861 563	86 299 253	1.7%	44 619 629	37 108 658	-16.8%	29 572 900	39 284 787	32.8%	10 669 034	9 905 808	-7.2%
<b>Total white</b>	<b>209 146 923</b>	<b>189 874 488</b>	<b>-9.2%</b>	<b>105 781 974</b>	<b>92 625 850</b>	<b>-12.4%</b>	<b>75 264 939</b>	<b>69 486 833</b>	<b>-7.7%</b>	<b>28 100 011</b>	<b>27 761 806</b>	<b>-1.2%</b>
<b>TOTAL</b>	<b>372 889 870</b>	<b>310 115 863</b>	<b>-16.8%</b>	<b>170 521 165</b>	<b>139 254 020</b>	<b>-18.3%</b>	<b>102 467 165</b>	<b>83 455 245</b>	<b>-18.6%</b>	<b>99 901 543</b>	<b>87 406 599</b>	<b>-12.5%</b>

**TABLE 5:  
STOCK SITUATION IN THE LITTLE KAROO, WORCESTER AND ROBERTSON**

	2008 VINTAGE			PREVIOUS VINTAGES			LITRES TOTAL
	CONTRACTED	NOT CONTRACTED	BOTTLED	CONTRACTED	NOT CONTRACTED	BOTTLED	
<b>RED WINE</b>							
Cabernet Sauvignon	9 173 194	148 568	9 111	390 355	2 100	86 804	9 810 132
Merlot	5 504 736	59 375	5 121	355 844		30 775	5 955 851
Pinotage	4 011 026	105 290	7 056	272 001	11 422	63 948	4 470 743
Shiraz	5 452 731	60 757		640 264	10 098	85 691	6 249 541
Other red	17 184 012	89 407	64 817	2 476 917	76 268	250 483	20 141 904
<b>Total red</b>	<b>41 325 699</b>	<b>463 397</b>	<b>86 105</b>	<b>4 135 381</b>	<b>99 888</b>	<b>517 701</b>	<b>46 628 171</b>
<b>WHITE WINE</b>							
Chardonnay	7 096 853	312 186	55 125	246 467	165 651	29 396	7 905 678
Chenin blanc	20 164 104	1 048 030	157 463	1 204 642		3 695	22 577 934
Colombar	15 674 203	1 203 367	21 172	545 032		2 971	17 446 745
Sauvignon blanc	6 398 100	512 119	188 593	295 042	176 096	16 886	7 586 836
Other white	34 607 271	401 070	234 689	1 748 222	58 121	59 285	37 108 658
<b>Total white</b>	<b>83 940 531</b>	<b>3 476 772</b>	<b>657 042</b>	<b>4 039 405</b>	<b>399 868</b>	<b>112 233</b>	<b>92 625 851</b>
<b>TOTAL</b>	<b>125 266 230</b>	<b>3 940 169</b>	<b>743 147</b>	<b>8 174 786</b>	<b>499 756</b>	<b>629 934</b>	<b>139 254 022</b>

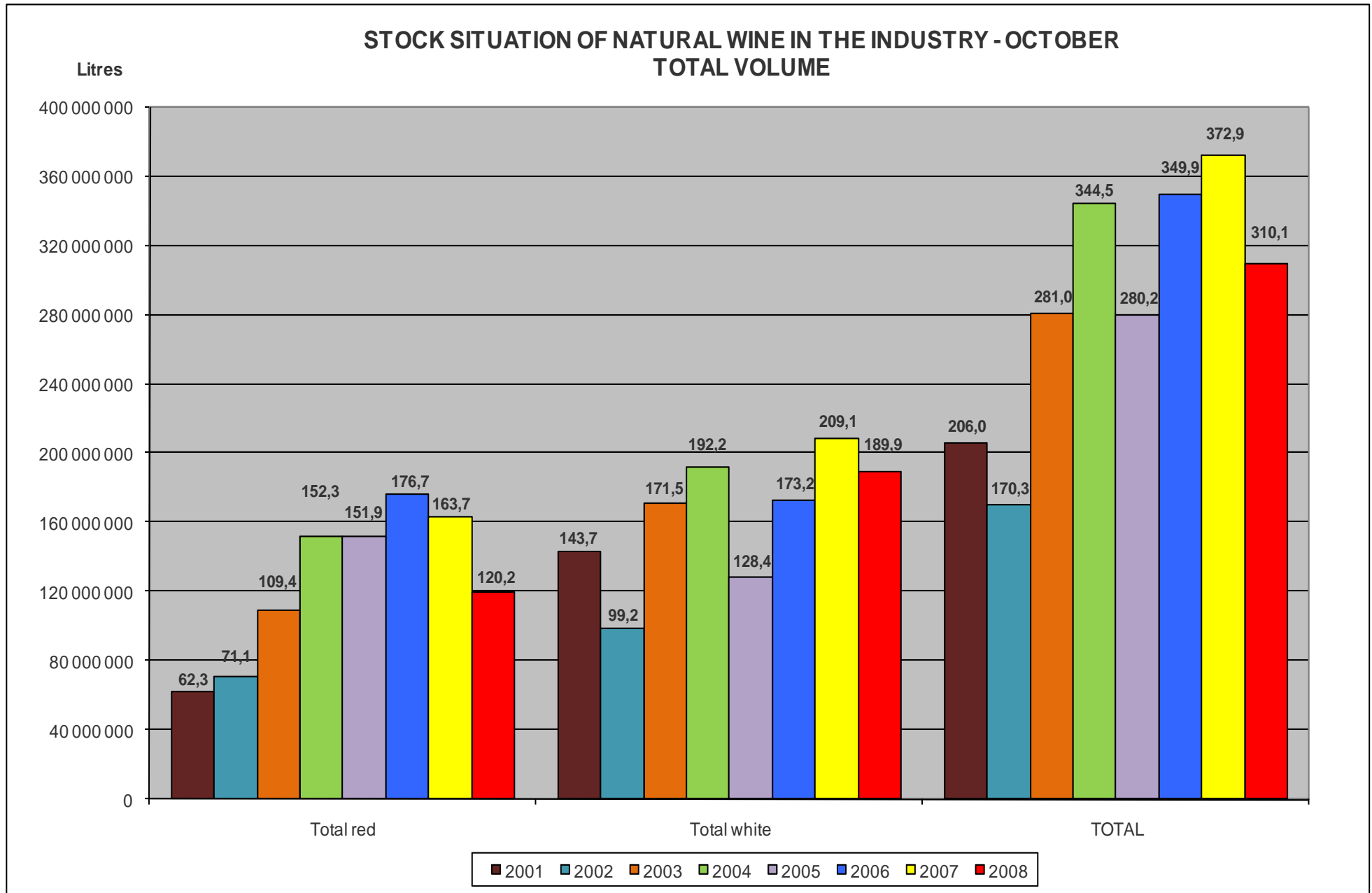
**TABLE 6:  
STOCK SITUATION IN THE OLIFANTS RIVER AND ORANGE RIVER**

	2008 VINTAGE			PREVIOUS VINTAGES			LITRES TOTAL
	CONTRACTED	NOT CONTRACTED	BOTTLED	CONTRACTED	NOT CONTRACTED	BOTTLED	
<b>RED WINE</b>							
Cabernet Sauvignon	1 147 644	41 444	21 794	254 929		15 793	1 481 604
Merlot	748 571	62 146	2 914	58 978		13 712	886 321
Pinotage	2 173 473		16 155	143 128		25 004	2 357 760
Shiraz	2 972 126		22 221	71 187		32 124	3 097 658
Other red	5 682 883		47 752	332 965		81 471	6 145 071
<b>Total red</b>	<b>12 724 697</b>	<b>103 590</b>	<b>110 836</b>	<b>861 187</b>		<b>168 104</b>	<b>13 968 414</b>
<b>WHITE WINE</b>							
Chardonnay	1 619 798		23 976	1 350		25 394	1 670 518
Chenin blanc	8 176 295	207 907	72 374			16 980	8 473 556
Colombar	17 770 645	180 033	18 415	263 374		21 342	18 253 809
Sauvignon blanc	1 447 844	298 728	16 438	14 972		26 181	1 804 163
Other white	36 814 860	1 434 480	300 002	729 772		5 673	39 284 787
<b>Total white</b>	<b>65 829 442</b>	<b>2 121 148</b>	<b>431 205</b>	<b>1 009 468</b>		<b>95 570</b>	<b>69 486 833</b>
<b>TOTAL</b>	<b>78 554 139</b>	<b>2 224 738</b>	<b>542 041</b>	<b>1 870 655</b>		<b>263 674</b>	<b>83 455 247</b>

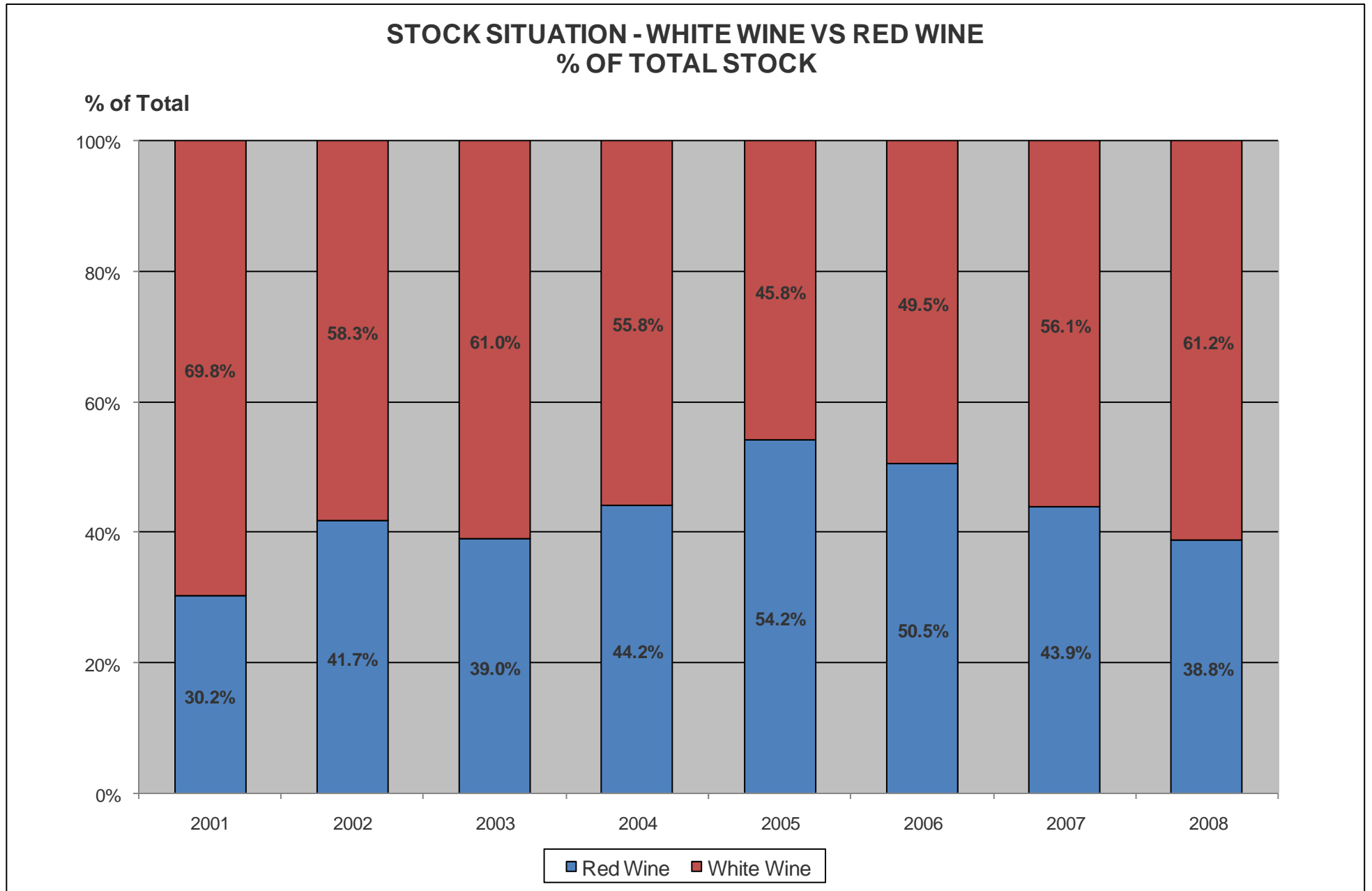
**TABLE 7:  
STOCK SITUATION IN STELLENBOSCH, PAARL AND MALMESBURY**

	2008 VINTAGE			PREVIOUS VINTAGES			LITRES TOTAL
	CONTRACTED	NOT CONTRACTED	BOTTLED	CONTRACTED	NOT CONTRACTED	BOTTLED	
<b>RED WINE</b>							
Cabernet Sauvignon	10 753 865	73 839	50 527	1 963 143	13 817	159 751	13 014 942
Merlot	5 003 103	371 038	14 720	842 020	60 824	111 914	6 403 619
Pinotage	8 118 422	125 158	119 398	2 727 422	59 224	234 109	11 383 733
Shiraz	9 419 202	86 994	47 375	1 911 819	2 501	249 057	11 716 948
Other red	9 340 000	238 619	295 968	6 738 518	30 308	482 139	17 125 552
<b>Total red</b>	<b>42 634 592</b>	<b>895 648</b>	<b>527 988</b>	<b>14 182 922</b>	<b>166 674</b>	<b>1 236 970</b>	<b>59 644 794</b>
<b>WHITE WINE</b>							
Chardonnay	1 932 667	242 418	178 968	655 223	504	31 288	3 041 068
Chenin blanc	10 569 060	1 031 464	221 953	149 937		98 279	12 070 693
Colombar	470 501	228 379		30 163		1 436	730 479
Sauvignon blanc	1 492 479	205 504	189 437	60 140	17 645	48 554	2 013 759
Other white	8 179 404	979 989	395 432	159 469	616	190 899	9 905 809
<b>Total white</b>	<b>22 644 111</b>	<b>2 687 754</b>	<b>985 790</b>	<b>1 054 932</b>	<b>18 765</b>	<b>370 456</b>	<b>27 761 808</b>
<b>TOTAL</b>	<b>65 278 703</b>	<b>3 583 402</b>	<b>1 513 778</b>	<b>15 237 854</b>	<b>185 439</b>	<b>1 607 426</b>	<b>87 406 602</b>

**GRAPH 1:**

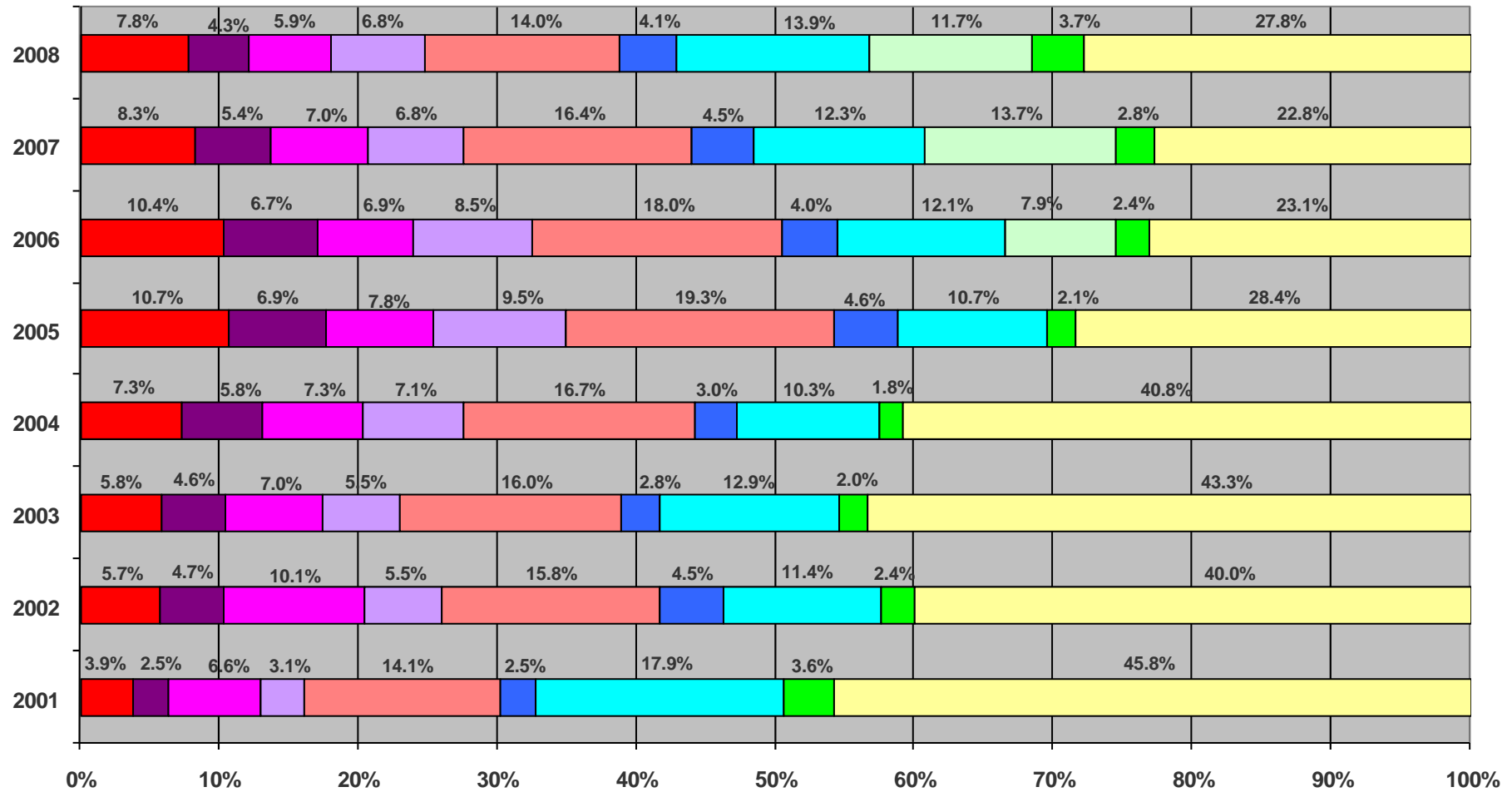


**GRAPH 2:**



**GRAPH 3:**

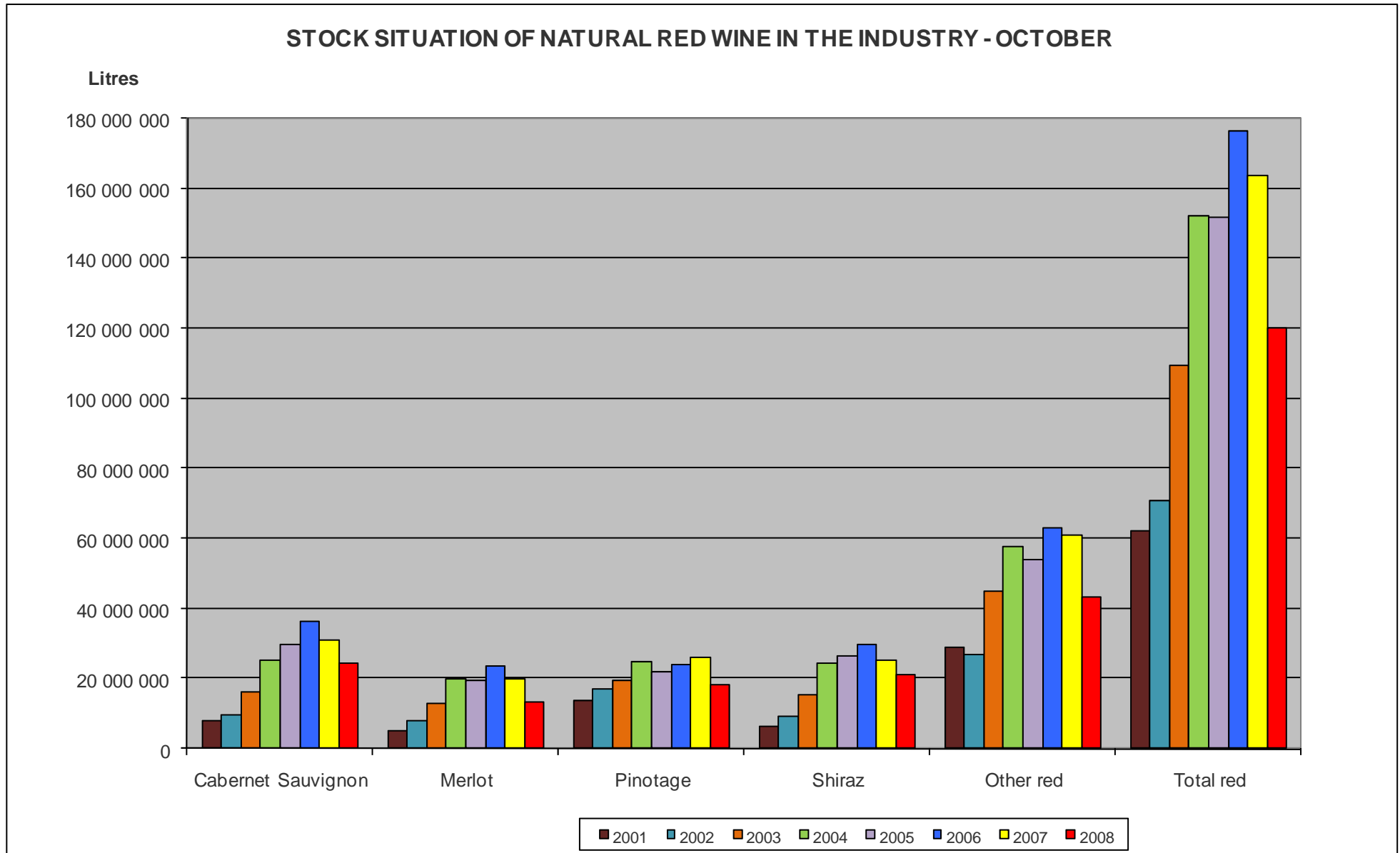
**STOCK SITUATION OF NATURAL WINE IN THE INDUSTRY- OCTOBER  
VARIETIES AS PERCENTAGE OF TOTAL**



\*From 2006 excluding Colombiar

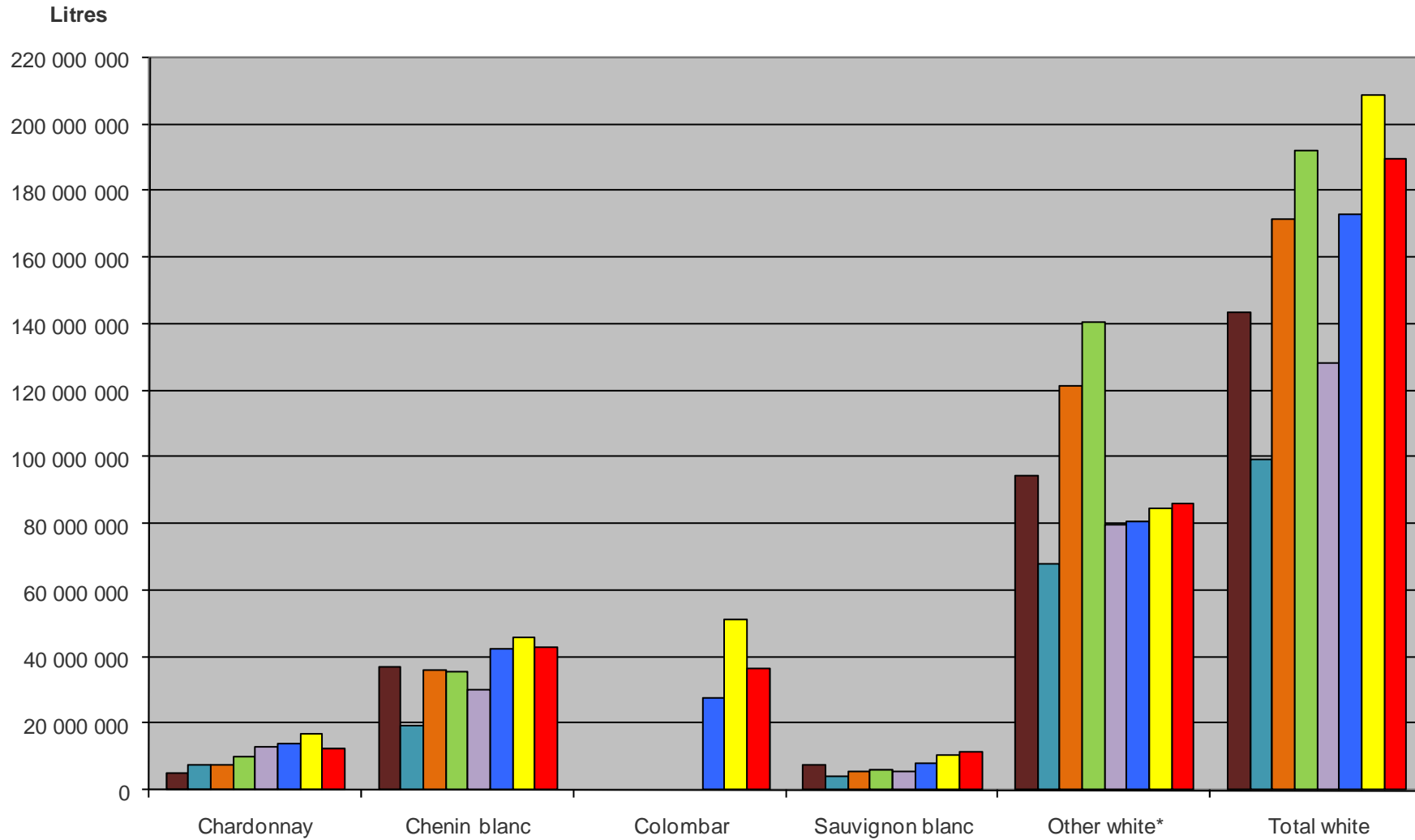
- Cabernet Sauvignon    ■ Merlot    ■ Pinotage    ■ Shiraz
- Other red    ■ Chardonnay    ■ Chenin blanc    ■ Colombiar
- Sauvignon blanc    ■ Other white\*

**GRAPH 4:**

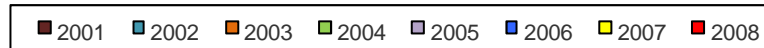


**GRAPH 5:**

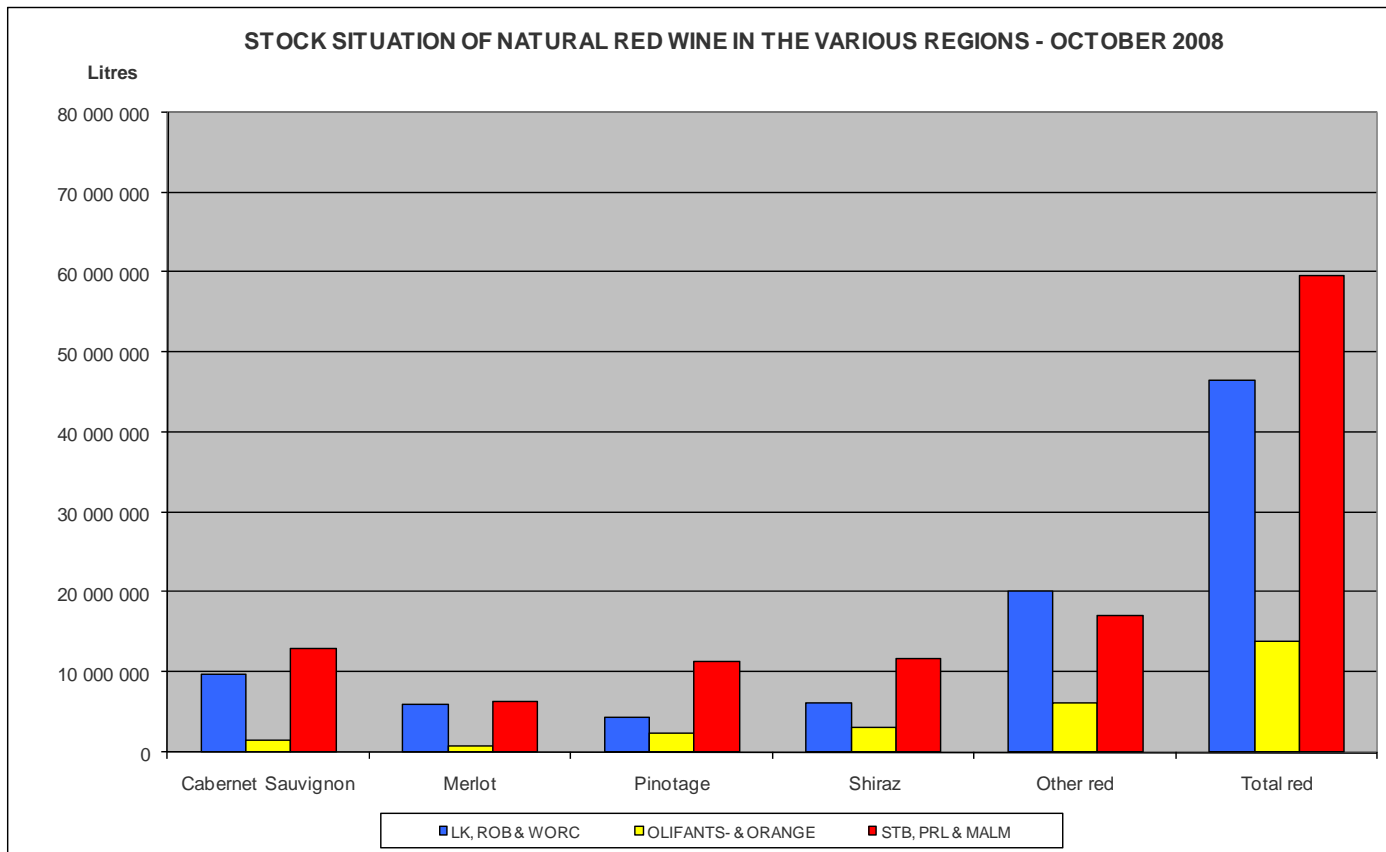
**STOCK SITUATION OF NATURAL WHITE WINE IN THE INDUSTRY - OCTOBER**



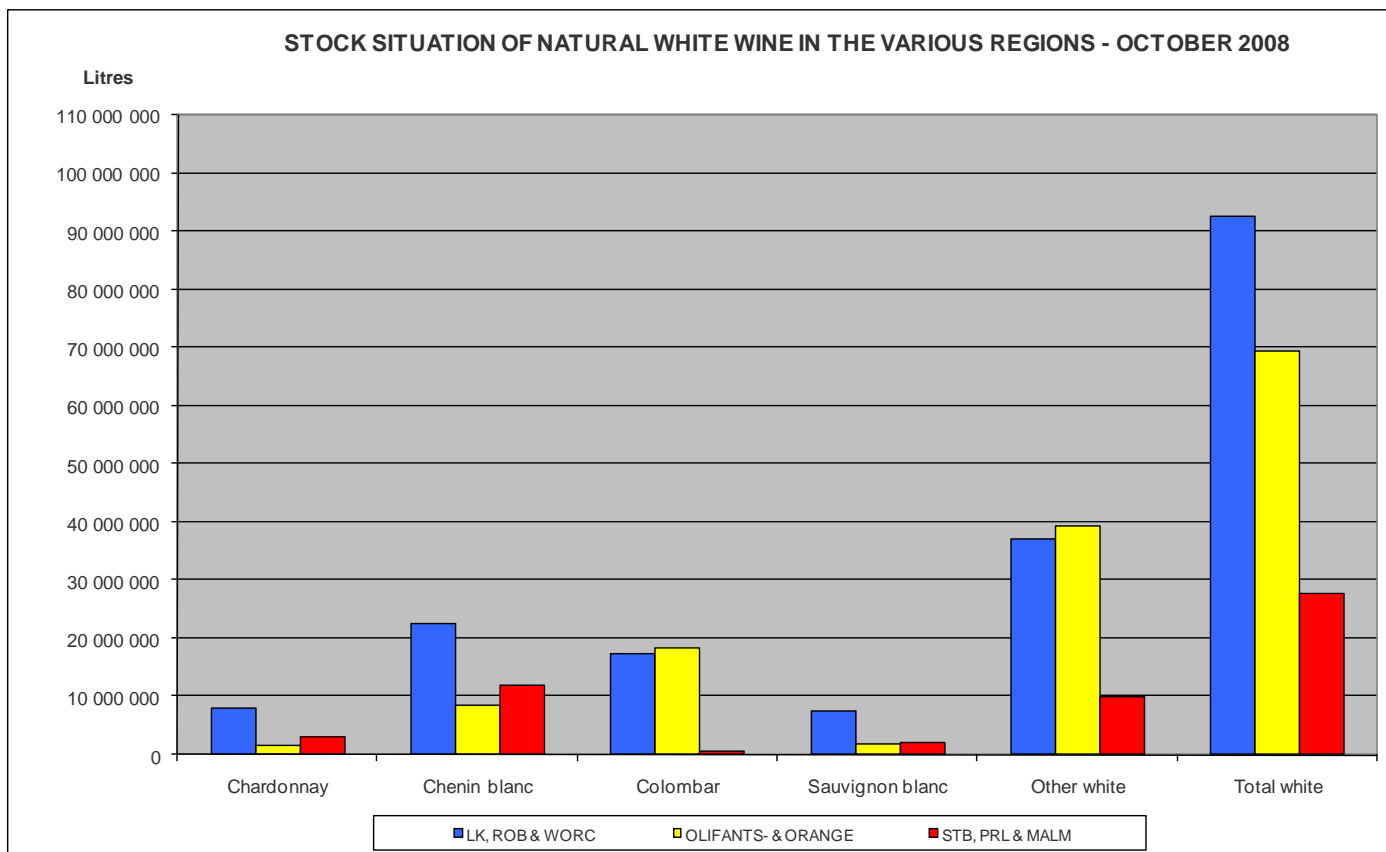
\*From 2006 excluding Colombar



**GRAPH 6:**



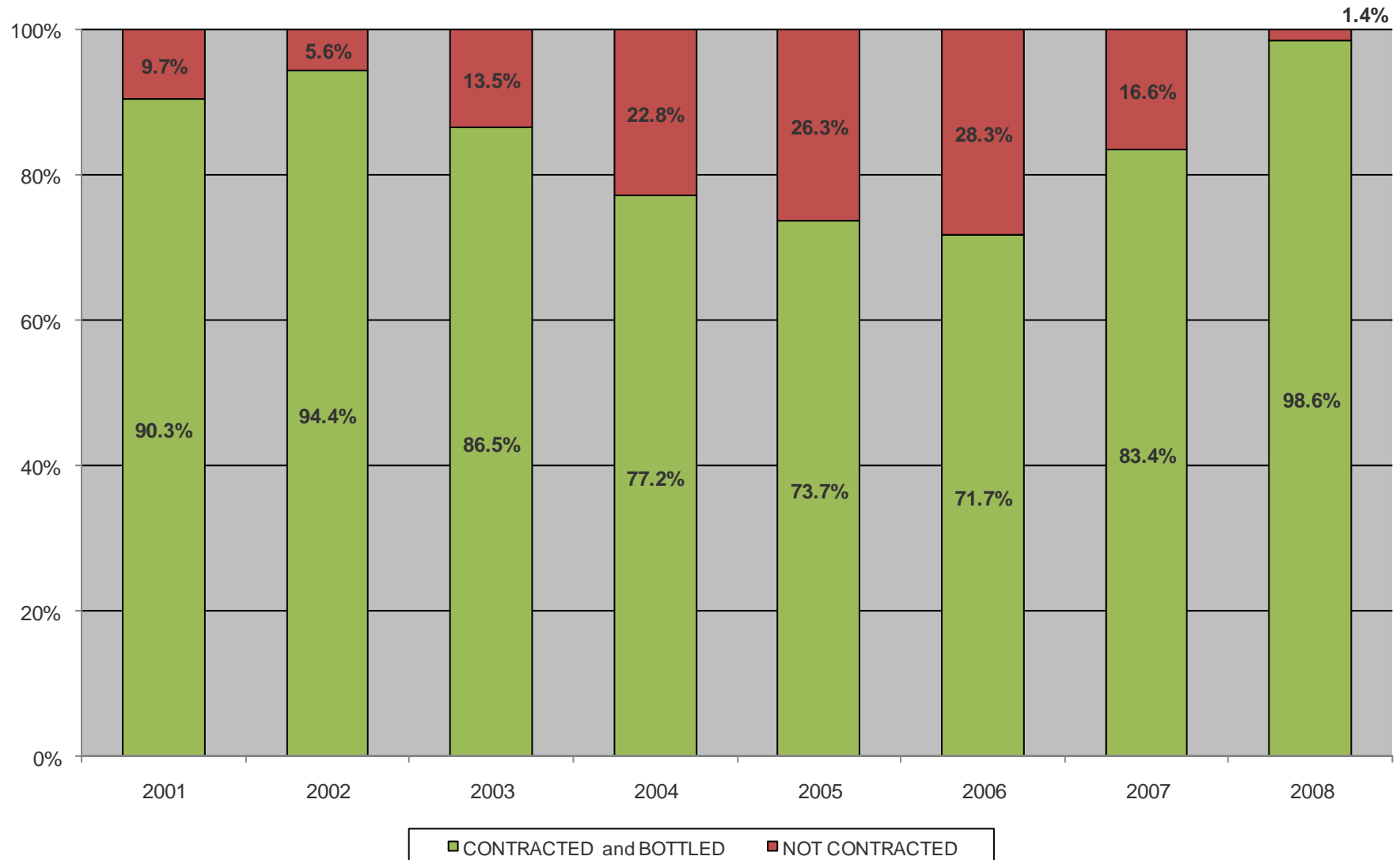
**GRAPH 7:**



**GRAPH 8:**

### CONTRACTED AND BOTTLED VS NOT CONTRACTED NATURAL RED WINE

% of Total



**GRAPH 9:**

