



Bonita Floris
tel: +27 21 807 5711
e-mail: floris@sawis.co.za

Grape prices 2011

(excluding deliveries to producer cellars by members)

SAWIS

SA WYNBEDRYF-INLIGTING & -STELSELS
SA WINE INDUSTRY INFORMATION & SYSTEMS

GRAPE PRICES 2011

VARIETY	PRICE CATEGORY RAND / TON	KILOGRAM					% OF TOTAL
		CONSTANTIA / STELLENBOSCH / GRABOUW / DURBANVILLE /	WORCESTER / BREEDEKLOOF / LITTLE KAROO / ROBERTSON	PAARL / MALMESBURY	OLIFANTS- RIVER / ORANGE- RIVER	INDUSTRY	
Cabernet Sauvignon	A 0 - 1070					0	0.00
	B 1071 - 1248			690	8 260	8 950	0.05
	C 1249 - 1584	5 237		12 502		17 739	0.10
	D 1585 - 1920	4 026		106 220	16 260	126 506	0.72
	E 1921 - 2256	9 735			44 740	54 475	0.31
	F 2257 - 2592	757 578	15 460	1 616 650		2 389 688	13.67
	G 2593 - 2928	250 877	17 740	867 990	57 420	1 194 027	6.83
	H 2929 - 3264	1 052 058	34 686	207 223	537 370	1 831 337	10.47
	I 3265 - 3648	48 300	20 380	319 354		388 034	2.22
	J 3649 - 3984	260 638	86 060	47 436		394 134	2.25
	K 3985 - 4320	510 063	198 370	1 926 040	71 660	2 706 133	15.48
	L 4321 - 4656	286 195		294 586		580 781	3.32
	M 4657 - 4992	2 413 414	30 860	985 073	15 644	3 444 991	19.70
	N 4993 - 5328	269 579	30 627	176 690		476 896	2.73
	O 5329 - 5665	85 741	37 040	165 860		288 641	1.65
	P 5666 - 6001	313 411		332 956		646 367	3.70
	Q 6002 - 6337	9 898		75 605		85 503	0.49
	R 6338 - 6673	1 183 022		440 012		1 623 034	9.28
	S 6674 - 7009	892 442		263 245	14 420	1 170 107	6.69
	T 7010 - 7345	12 330				12 330	0.07
	V 7682 - 8017	7 700	3 219			10 919	0.06
Y 8690 - 9025	9 004				9 004	0.05	
Z > 9025			26 360		26 360	0.15	
	Sub-tot	8 381 248	474 442	7 864 492	765 774	17 485 956	100.00
	VALUE	R 40 041 160	R 1 911 651	R 31 663 649	R 2 404 666	R 76 021 125	
	AVE PRICE R/T	R 4 777	R 4 029	R 4 026	R 3 140	R 4 348	
						20.91 % *	
Cinsaut	B 1071 - 1248				8 970	8 970	0.76
	C 1249 - 1584			104 520		104 520	8.84
	D 1585 - 1920				69 780	69 780	5.90
	E 1921 - 2256	20 840	62 430		113 340	196 610	16.63
	F 2257 - 2592	48 200		576 490		624 690	52.83
	H 2929 - 3264	93 000				93 000	7.87
	I 3265 - 3648	37 594		18 420		56 014	4.74
K 3985 - 4320			9 845		9 845	0.83	
L 4321 - 4656				8 355	8 355	0.71	
M 4657 - 4992			10 560		10 560	0.89	
	Sub-tot	199 634	62 430	719 835	200 445	1 182 344	100.00
	VALUE	R 595 609	R 137 346	R 1 777 330	R 400 646	R 2 910 931	
	AVE PRICE R/T	R 2 984	R 2 200	R 2 469	R 1 999	R 2 462	
						4.28 % *	
Merlot	A 0 - 1070				7 470	7 470	0.06
	B 1071 - 1248				30 740	30 740	0.25
	C 1249 - 1584	1 320				1 320	0.01
	D 1585 - 1920				4 120	4 120	0.03
	E 1921 - 2256	89 300	25 800			115 100	0.94
	F 2257 - 2592	1 235 560		203 000	67 540	1 506 100	12.29
	G 2593 - 2928	464 930	154 105	1 026 150	133 980	1 779 165	14.52
	H 2929 - 3264	1 160 349	102 110	342 650	717 906	2 323 015	18.96
	I 3265 - 3648	147 428	93 760	126 610		367 798	3.00
	J 3649 - 3984	109 080		570 260		679 340	5.54
	K 3985 - 4320	152 913	87 940	402 841		643 694	5.25
	L 4321 - 4656	1 928 039	78 580	374 207		2 380 826	19.43
	M 4657 - 4992	149 268		37 000		186 268	1.52
	N 4993 - 5328	286 254		87 960		374 214	3.05
	O 5329 - 5665	94 514	15 700	165 301		275 515	2.25
	P 5666 - 6001	112 588		29 251		141 839	1.16
	Q 6002 - 6337	777 411	41 760	108 521	12 160	939 852	7.67
	R 6338 - 6673	397 800				397 800	3.25
	S 6674 - 7009	15 767				15 767	0.13
	U 7346 - 7681	37 133				37 133	0.30
	V 7682 - 8017	17 280				17 280	0.14
W 8018 - 8353	6 760				6 760	0.06	
X 8354 - 8689	10 152				10 152	0.08	
Z > 9025	4 320		8 500		12 820	0.10	
	Sub-tot	7 198 166	599 755	3 482 251	973 916	12 254 088	100.00
	VALUE	R 30 065 994	R 2 222 643	R 12 631 591	R 2 827 816	R 47 748 044	
	AVE PRICE R/T	R 4 177	R 3 706	R 3 627	R 2 904	R 3 896	
						20.28 % *	

* This percentage represents the grapes that were traded in the variety/grape group concerned as a percentage of the total grapes of this variety/grape group (including deliveries to producer cellars by members) pressed.

VARIETY	PRICE CATEGORY RAND / TON	KILOGRAM					% OF TOTAL
		CONSTANTIA / STELLENBOSCH / GRABOUW / DURBANVILLE /	WORCESTER / BREEDEKLOOF / LITTLE KAROO / ROBERTSON	PAARL / MALMESBURY	OLIFANTS- RIVER / ORANGE- RIVER	INDUSTRY	
Pinotage	A 0 - 1070		42 740		11 280	54 020	0.66
	B 1071 - 1248				52 540	52 540	0.64
	C 1249 - 1584			16 534		16 534	0.20
	D 1585 - 1920			36 090	19 920	56 010	0.68
	E 1921 - 2256	9 735		175 820		185 555	2.26
	F 2257 - 2592	173 660	166 820	280 630		621 110	7.57
	G 2593 - 2928	73 972		524 660	236 800	835 432	10.18
	H 2929 - 3264	390 454		622 582	586 660	1 599 696	19.50
	I 3265 - 3648	273 596	14 360	532 528	208 080	1 028 564	12.54
	J 3649 - 3984	49 180		644 980		694 160	8.46
	K 3985 - 4320	891 036		439 620		1 330 656	16.22
	L 4321 - 4656	46 315	3 272	129 138		178 725	2.18
	M 4657 - 4992	90 210		151 020		241 230	2.94
	N 4993 - 5328	20 002	7 330	7 100		34 432	0.42
	O 5329 - 5665	33 240		17 580		50 820	0.62
	P 5666 - 6001	43 655		31 646		75 301	0.92
	Q 6002 - 6337	764 340		141 240		905 580	11.04
	R 6338 - 6673	89 440				89 440	1.09
	S 6674 - 7009	21 716				21 716	0.26
	T 7010 - 7345	61 508				61 508	0.75
	V 7682 - 8017			54 790		54 790	0.67
Y 8690 - 9025		16 816			16 816	0.20	
	Sub-tot	3 032 059	251 338	3 805 958	1 115 280	8 204 635	100.00
	VALUE	R 13 896 965	R 684 607	R 13 472 084	R 3 277 540	R 31 331 196	
	AVE PRICE R/T	R 4 583	R 2 724	R 3 540	R 2 939	R 3 819	
						13.93 % *	
Pinot Noir	F 2257 - 2592			142 660		142 660	6.86
	G 2593 - 2928			25 840		25 840	1.24
	H 2929 - 3264	720	16 900		21 980	39 600	1.90
	I 3265 - 3648		10 060	3 970		14 030	0.67
	K 3985 - 4320	47 566		33 390		80 956	3.89
	L 4321 - 4656	296 430	84 304	82 940		463 674	22.29
	M 4657 - 4992	15 307	10 120	87 589		113 016	5.43
	N 4993 - 5328	20 100	43 838	8 080		72 018	3.46
	O 5329 - 5665	73 193	8 240	13 589	10 000	105 022	5.05
	P 5666 - 6001	756 430	50 137	27 980	48 620	883 167	42.46
	Q 6002 - 6337	16 160				16 160	0.78
	R 6338 - 6673	3 410	1 500	21 780		26 690	1.28
	S 6674 - 7009	49 011		441		49 452	2.38
	U 7346 - 7681	24 120				24 120	1.16
V 7682 - 8017		1 560			1 560	0.08	
X 8354 - 8689	1 719				1 719	0.08	
Z > 9025	7 678		12 410		20 088	0.97	
	Sub-tot	1 311 844	226 659	460 669	80 600	2 079 772	100.00
	VALUE	R 7 247 072	R 1 106 238	R 1 957 308	R 414 204	R 10 724 823	
	AVE PRICE R/T	R 5 524	R 4 881	R 4 249	R 5 139	R 5 157	
						49.13 % *	
Shiraz (Syrah)	A 0 - 1070	20 008		26 188		46 196	0.25
	C 1249 - 1584			5 532		5 532	0.03
	D 1585 - 1920	39 620				39 620	0.21
	E 1921 - 2256	3 860		119 720	71 900	195 480	1.05
	F 2257 - 2592	1 231 652	20 460	784 140		2 036 252	10.97
	G 2593 - 2928	503 243	33 040	575 980	785 798	1 898 061	10.22
	H 2929 - 3264	675 315	6 950	229 805	995 830	1 907 900	10.28
	I 3265 - 3648	26 570	67 100	166 785	69 380	329 835	1.78
	J 3649 - 3984	216 570	5 880	1 127 934		1 350 384	7.27
	K 3985 - 4320	647 012	153 860	1 464 796		2 265 668	12.20
	L 4321 - 4656	103 431	4 500	125 167	12 690	245 788	1.32
	M 4657 - 4992	2 957 893	163 300	749 600		3 870 793	20.85
	N 4993 - 5328	726 586	89 806	617 276		1 433 668	7.72
	O 5329 - 5665	165 914	28 318	408 429		602 661	3.25
	P 5666 - 6001	111 659	27 600	107 300		246 559	1.33
	Q 6002 - 6337	170 605	85 600	131 716		387 921	2.09
	R 6338 - 6673	677 301		218 314		895 615	4.82
	S 6674 - 7009	442 014	121 440	22 325	22 320	608 099	3.28
	U 7346 - 7681	5 257		5 235		10 492	0.06
	V 7682 - 8017	9 260		4 680		13 940	0.08
	W 8018 - 8353			47 704		47 704	0.26
Y 8690 - 9025			19 927		19 927	0.11	
Z > 9025	19 280		88 020		107 300	0.58	
	Sub-tot	8 753 050	807 854	7 046 573	1 957 918	18 565 395	100.00
	VALUE	R 38 746 429	R 3 944 773	R 29 454 373	R 5 819 648	R 77 965 224	
	AVE PRICE R/T	R 4 427	R 4 883	R 4 180	R 2 972	R 4 199	
						20.26 % *	

* This percentage represents the grapes that were traded in the variety/grape group concerned as a percentage of the total grapes of this variety/grape group (including deliveries to producer cellars by members) pressed.

VARIETY	PRICE CATEGORY RAND / TON	KILOGRAM					% OF TOTAL	
		CONSTANTIA / STELLENBOSCH / GRABOUW / DURBANVILLE /	WORCESTER / BREEDEKLOOF / LITTLE KAROO / ROBERTSON	PAARL / MALMESBURY	OLIFANTS- RIVER / ORANGE- RIVER	INDUSTRY		
Cabernet Franc	E	1921 - 2256	110 860				110 860	8.84
	F	2257 - 2592	142 188		132 254		274 442	21.88
	G	2593 - 2928	116 380		40 080		156 460	12.47
	H	2929 - 3264	140 165				140 165	11.18
	I	3265 - 3648	68 360		58 702		127 062	10.13
	J	3649 - 3984	16 980				16 980	1.35
	K	3985 - 4320	31 395				31 395	2.50
	L	4321 - 4656	162 714		30 425		193 139	15.40
	M	4657 - 4992	6 180		11 380		17 560	1.40
	N	4993 - 5328	70 044		24 073		94 117	7.50
	O	5329 - 5665	24 904		7 967		32 871	2.62
	Q	6002 - 6337	39 677		7 840		47 517	3.79
	S	6674 - 7009	11 680				11 680	0.93
		Sub-tot	941 527		312 721		1 254 248	100.00
	VALUE	R 3 349 719		R 1 064 178		R 4 413 898		
	AVE PRICE R/T	R 3 558		R 3 403		R 3 519		
						22.48 % *		
Tinta Barocca	H	2929 - 3264	17 990		69 940		87 930	19.26
	I	3265 - 3648	11 264	741	351 620		363 625	79.63
	K	3985 - 4320	300		4 200		4 500	0.99
	N	4993 - 5328		572			572	0.13
		Sub-tot	29 554	1 313	425 760		456 627	100.00
	VALUE	R 94 594	R 5 454	R 1 458 130		R 1 558 178		
	AVE PRICE R/T	R 3 201	R 4 153	R 3 425		R 3 412		
						23.40 % *		
Petit Verdot	F	2257 - 2592	64 140		457 400		521 540	31.38
	G	2593 - 2928	11 865		37 980		49 845	3.00
	H	2929 - 3264	140 415		68 360		208 775	12.56
	I	3265 - 3648	15 260	59 860	21 018		96 138	5.78
	K	3985 - 4320			85 260		85 260	5.13
	L	4321 - 4656	210 598	562	292 895		504 055	30.33
	M	4657 - 4992	6 880	6 680			13 560	0.82
	N	4993 - 5328	16 920	7 883	17 920		42 723	2.57
	O	5329 - 5665	6 333		28 736		35 069	2.11
	P	5666 - 6001	16 860		9 196		26 056	1.57
	Q	6002 - 6337	34 565		18 422		52 987	3.19
	R	6338 - 6673	4 930				4 930	0.30
	S	6674 - 7009	2 228				2 228	0.13
	Y	8690 - 9025			18 980		18 980	1.14
	Sub-tot	530 994	74 985	1 056 167		1 662 146	100.00	
	VALUE	R 2 176 737	R 271 546	R 3 846 273		R 6 294 557		
	AVE PRICE R/T	R 4 099	R 3 621	R 3 642		R 3 787		
						26.35 % *		
Carignan	F	2257 - 2592			57 460		57 460	47.31
	I	3265 - 3648	3 600				3 600	2.96
	K	3985 - 4320			5 860		5 860	4.82
	L	4321 - 4656			54 093		54 093	44.53
	R	6338 - 6673			450		450	0.37
	Sub-tot	3 600		117 863		121 463	100.00	
	VALUE	R 12 600		R 418 753		R 431 353		
	AVE PRICE R/T	R 3 500		R 3 553		R 3 551		
						19.50 % *		
Ruby Cabernet	C	1249 - 1584				8 200	8 200	0.90
	D	1585 - 1920			24 670	190 760	215 430	23.55
	E	1921 - 2256		30 360			30 360	3.32
	F	2257 - 2592		158 890	17 105		175 995	19.24
	G	2593 - 2928				314 690	314 690	34.40
	H	2929 - 3264				170 042	170 042	18.59
	Sub-tot		189 250	41 775	683 692	914 717	100.00	
	VALUE		R 430 077	R 84 702	R 1 719 153	R 2 233 932		
	AVE PRICE R/T		R 2 273	R 2 028	R 2 515	R 2 442		
						2.59 % *		

* This percentage represents the grapes that were traded in the variety/grape group concerned as a percentage of the total grapes of this variety/grape group (including deliveries to producer cellars by members) pressed.

VARIETY	PRICE CATEGORY RAND / TON	KILOGRAM					INDUSTRY	% OF TOTAL
		CONSTANTIA / STELLENBOSCH / GRABOUW / DURBANVILLE /	WORCESTER / BREEDEKLOOF / LITTLE KAROO / ROBERTSON	PAARL / MALMESBURY	OLIFANTS- RIVER / ORANGE- RIVER			
Roobernet	F	2257 - 2592		20 534	102 725		123 259	61.69
	L	4321 - 4656			76 560		76 560	38.31
		Sub-tot		20 534	179 285		199 819	100.00
		VALUE		R 51 335	R 614 125		R 665 460	
		AVE PRICE R/T		R 2 500	R 3 425		R 3 330	
						16.26 % *		
Gamay Noir	G	2593 - 2928			37 660		37 660	79.38
	K	3985 - 4320	9 780				9 780	20.62
		Sub-tot	9 780		37 660		47 440	100.00
		VALUE	R 39 120		R 101 682		R 140 802	
		AVE PRICE R/T	R 4 000		R 2 700		R 2 968	
						34.63 % *		
Other Red	A	0 - 1070			13 265	710 786	724 051	26.59
	C	1249 - 1584				1 860	1 860	0.07
	D	1585 - 1920			36 710	23 880	60 590	2.22
	E	1921 - 2256	59 090		5 660		64 750	2.38
	F	2257 - 2592	240 616		164 011		404 627	14.86
	H	2929 - 3264			67 840	7 596	75 436	2.77
	I	3265 - 3648	60 286		82 599		142 885	5.25
	J	3649 - 3984	3 940		48 442		52 382	1.92
	K	3985 - 4320	125 520		262 102		387 622	14.23
	L	4321 - 4656	211 085		133 165	50 034	394 284	14.48
	M	4657 - 4992	39 686	2 460	18 382		60 528	2.22
	N	4993 - 5328	28 677	3 019	50 483	16 441	98 620	3.62
	O	5329 - 5665	8 339		139 420	7 494	155 253	5.70
	P	5666 - 6001	12 065	11 397			23 462	0.86
	Q	6002 - 6337	17 620		4 661		22 281	0.82
	R	6338 - 6673			6 805		6 805	0.25
	S	6674 - 7009				12 936	12 936	0.47
	V	7682 - 8017	5 300				5 300	0.19
	Y	8690 - 9025	395		8 515		8 910	0.33
	Z	> 9025	9 960		10 920		20 880	0.77
	Sub-tot	822 579	16 876	1 052 980	831 027	2 723 462	100.00	
	VALUE	R 3 155 788	R 95 408	R 4 224 158	R 933 522	R 8 408 876		
	AVE PRICE R/T	R 3 836	R 5 653	R 4 012	R 1 123	R 3 088		
						6.86 % *		
Colombar	A	0 - 1070			5 710		5 710	0.24
	B	1071 - 1248			16 660	36 190	52 850	2.19
	C	1249 - 1584			304 810	191 200	496 010	20.56
	D	1585 - 1920		148 650		1 665 945	1 814 595	75.23
	G	2593 - 2928			28 420		28 420	1.18
J	3649 - 3984		14 587			14 587	0.60	
	Sub-tot		163 237	355 600	1 893 335	2 412 172	100.00	
	VALUE		R 292 668	R 546 071	R 3 235 708	R 4 074 446		
	AVE PRICE R/T		R 1 793	R 1 536	R 1 709	R 1 689		
						0.93 % *		
Palomino (White French)	A	0 - 1070				213 820	213 820	63.97
	B	1071 - 1248			96 100	24 320	120 420	36.03
		Sub-tot			96 100	238 140	334 240	100.00
		VALUE			R 105 710	R 219 190	R 324 900	
	AVE PRICE R/T			R 1 100	R 920	R 972		
						15.72 % *		
Sémillon	A	0 - 1070				6 360	6 360	0.47
	D	1585 - 1920				79 708	79 708	5.89
	E	1921 - 2256	69 860		74 040		143 900	10.63
	G	2593 - 2928	74 075		172 520		246 595	18.21
	H	2929 - 3264	20 800		10 800		31 600	2.33
	I	3265 - 3648	250 806		90 830	85 600	427 236	31.56
	J	3649 - 3984	17 960				17 960	1.33
	L	4321 - 4656	22 860				22 860	1.69
	M	4657 - 4992			64 400		64 400	4.76
	N	4993 - 5328	19 003	11 970	24 605	4 161	59 739	4.41
	O	5329 - 5665	125 163	6 640	41 020		172 823	12.76
	P	5666 - 6001	7 150			3 700	10 850	0.80
	R	6338 - 6673	10 924				10 924	0.81
	S	6674 - 7009			12 090		12 090	0.89
	U	7346 - 7681	15 116	8 054	9 884		33 054	2.44
	V	7682 - 8017	9 720	4 118			13 838	1.02
		Sub-tot	643 437	30 782	500 189	179 529	1 353 937	100.00
	VALUE	R 2 503 408	R 192 304	R 1 810 722	R 475 108	R 4 981 543		
	AVE PRICE R/T	R 3 891	R 6 247	R 3 620	R 2 646	R 3 679		
						10.07 % *		

* This percentage represents the grapes that were traded in the variety/grape group concerned as a percentage of the total grapes of this variety/grape group (including deliveries to producer cellars by members) pressed.

VARIETY	PRICE CATEGORY RAND / TON	KILOGRAM					INDUSTRY	% OF TOTAL
		CONSTANTIA / STELLENBOSCH / GRABOUW / DURBANVILLE /	WORCESTER / BREEDEKLOOF / LITTLE KAROO / ROBERTSON	PAARL / MALMESBURY	OLIFANTS- RIVER / ORANGE- RIVER			
Muscat d'Alexandrie (Hanepoot)	A	0 - 1070		22 260			22 260	3.54
	B	1071 - 1248			24 640	76 160	100 800	16.04
	C	1249 - 1584	1 093	17 520			18 613	2.96
	D	1585 - 1920				395 179	395 179	62.89
	F	2257 - 2592				51 680	51 680	8.22
	H	2929 - 3264	28 680				28 680	4.56
	I	3265 - 3648			6 020		6 020	0.96
	U	7346 - 7681	5 164				5 164	0.82
		Sub-tot	34 937	39 780	30 660	523 019	628 396	100.00
		VALUE	R 126 410	R 48 540	R 50 638	R 905 559	R 1 131 147	
	AVE PRICE R/T	R 3 618	R 1 220	R 1 652	R 1 731	R 1 800		
						1.88 % *		
Crouchen (Cape Riesling)	A	0 - 1070			39 250	76 820	116 070	30.22
	E	1921 - 2256			257 080		257 080	66.94
	I	3265 - 3648			10 924		10 924	2.84
		Sub-tot			307 254	76 820	384 074	100.00
		VALUE			R 643 060	R 69 138	R 712 198	
	AVE PRICE R/T			R 2 093	R 900	R 1 854		
						5.21 % *		
Gewürztraminer	F	2257 - 2592	33 560				33 560	43.98
	K	3985 - 4320	25 510				25 510	33.43
	L	4321 - 4656	11 680				11 680	15.31
	V	7682 - 8017	5 560				5 560	7.29
		Sub-tot	76 310				76 310	100.00
	VALUE	R 280 190				R 280 190		
	AVE PRICE R/T	R 3 672				R 3 672		
						7.69 % *		
Sauvignon blanc	C	1249 - 1584				6 120	6 120	0.03
	D	1585 - 1920			27 840	448 560	476 400	2.67
	E	1921 - 2256	3 800	28 610			32 410	0.18
	F	2257 - 2592				5 180	5 180	0.03
	G	2593 - 2928	354 328	28 980	227 260		610 568	3.42
	H	2929 - 3264	405 848		446 060		851 908	4.77
	I	3265 - 3648	1 250 985	187 205	1 059 160	9 920	2 507 270	14.03
	J	3649 - 3984	104 220	65 680	231 319	1 060 099	1 461 318	8.18
	K	3985 - 4320	366 646	83 520	626 954		1 077 120	6.03
	L	4321 - 4656	2 016 002	71 820	622 932	87 640	2 798 394	15.66
	N	4993 - 5328	311 135	19 237	356 172		686 544	3.84
	O	5329 - 5665	324 300		74 690	20 294	419 284	2.35
	P	5666 - 6001	790 022		175 924	30 344	996 290	5.58
	Q	6002 - 6337	1 478 993		196 679		1 675 672	9.38
	R	6338 - 6673	402 683	18 420	42 515	141 120	604 738	3.38
	S	6674 - 7009	2 226 284	10 280	446 800	40 958	2 724 322	15.25
	T	7010 - 7345	62 810		67 700	95 290	225 800	1.26
	U	7346 - 7681	148 245	57 331	75 004		280 580	1.57
	V	7682 - 8017		65 700	93 438	21 860	180 998	1.01
	X	8354 - 8689		26 610	63 356		89 966	0.50
	Y	8690 - 9025	45 530	17 085	38 420		101 035	0.57
Z	> 9025	28 160		26 300		54 460	0.30	
	Sub-tot	10 319 991	680 478	4 898 523	1 967 385	17 866 377	100.00	
	VALUE	R 54 991 688	R 3 334 477	R 22 827 052	R 7 576 526	R 88 729 744		
	AVE PRICE R/T	R 5 329	R 4 900	R 4 660	R 3 851	R 4 966		
						20.42 % *		
Chenin blanc	A	0 - 1070		13 620			13 620	0.12
	B	1071 - 1248				68 040	68 040	0.58
	C	1249 - 1584			791 210	201 510	1 018 710	8.61
	D	1585 - 1920		123 430	112 508	3 544 081	3 780 019	31.96
	E	1921 - 2256	19 328	26 090	80 660		126 078	1.07
	F	2257 - 2592	115 060		837 105	115 780	1 067 945	9.03
	G	2593 - 2928	135 880		154 480		290 360	2.45
	H	2929 - 3264	1 289 995		1 581 078	15 029	2 886 102	24.40
	I	3265 - 3648	275 432		115 607		391 039	3.31
	J	3649 - 3984	704 247		258 992		963 239	8.14
	K	3985 - 4320	301 480		205 667		507 147	4.29
	L	4321 - 4656	148 182		42 646	9 022	199 850	1.69
	M	4657 - 4992			17 890		17 890	0.15
	N	4993 - 5328	135 856		97 900		233 756	1.98
	O	5329 - 5665	45 544		40 093		85 637	0.72
	P	5666 - 6001	33 061			8 000	41 061	0.35
	Q	6002 - 6337	18 706				18 706	0.16
	R	6338 - 6673			950		950	0.01
	Y	8690 - 9025			5 340		5 340	0.05
	Z	> 9025	22 428		89 640		112 068	0.95
		Sub-tot	3 245 199	189 130	4 431 766	3 961 462	11 827 557	100.00
	VALUE	R 11 711 425	R 300 969	R 13 428 896	R 6 953 095	R 32 394 385		
	AVE PRICE R/T	R 3 609	R 1 591	R 3 030	R 1 755	R 2 739		
						4.59 % *		

* This percentage represents the grapes that were traded in the variety/grape group concerned as a percentage of the total grapes of this variety/grape group (including deliveries to producer cellars by members) pressed.

VARIETY	PRICE CATEGORY RAND / TON	KILOGRAM					% OF TOTAL
		CONSTANTIA / STELLENBOSCH / GRABOUW / DURBANVILLE /	WORCESTER / BREEDEKLOOF / LITTLE KAROO / ROBERTSON	PAARL / MALMESBURY	OLIFANTS- RIVER / ORANGE- RIVER	INDUSTRY	
Muscat de Frontignan (Muscadel)	A 0 - 1070				9 718	9 718	7.22
	B 1071 - 1248			32 070		32 070	23.81
	D 1585 - 1920				12 112	12 112	8.99
	J 3649 - 3984		10 228			10 228	7.59
	K 3985 - 4320		30 575			30 575	22.70
	Z > 9025	9 051		30 920		39 971	29.68
	Sub-tot	9 051	40 803	62 990	21 830	134 674	100.00
VALUE	R 113 138	R 160 144	R 533 204	R 35 407	R 841 892		
AVE PRICE R/T	R 12 500	R 3 925	R 8 465	R 1 622	R 6 251		
					1.42 % *		
Chardonnay	B 1071 - 1248				4 360	4 360	0.04
	C 1249 - 1584			7 743		7 743	0.08
	D 1585 - 1920			81 637	83 180	164 817	1.62
	E 1921 - 2256			46 260	126 200	172 460	1.70
	F 2257 - 2592	12 230				12 230	0.12
	G 2593 - 2928	4 460		837 380		841 840	8.28
	H 2929 - 3264	452 708	203 300	117 562	413 684	1 187 254	11.68
	I 3265 - 3648	49 023	30 589	333 777	20 360	433 749	4.27
	J 3649 - 3984	227 700	90 000	1 033 440	2 798	1 353 938	13.32
	K 3985 - 4320	291 077	100 685	445 080		836 842	8.23
	L 4321 - 4656	1 197 228	200 232	1 014 394		2 411 854	23.73
	M 4657 - 4992	149 783		141 930		291 713	2.87
	N 4993 - 5328	102 181	14 840	169 200		286 221	2.82
	O 5329 - 5665	108 696	155 020	14 540	10 660	288 916	2.84
	P 5666 - 6001	860 796	73 349	245 590		1 179 735	11.61
	Q 6002 - 6337	509 075				509 075	5.01
	R 6338 - 6673	85 934	1 560			87 494	0.86
	S 6674 - 7009	25 460				25 460	0.25
	T 7010 - 7345	5 803				5 803	0.06
	Y 8690 - 9025	17 420				17 420	0.17
Z > 9025	2 660		41 070		43 730	0.43	
Sub-tot	4 102 234	869 575	4 529 603	661 242	10 162 654	100.00	
VALUE	R 20 061 044	R 3 761 983	R 17 926 164	R 1 799 044	R 43 548 235		
AVE PRICE R/T	R 4 890	R 4 326	R 3 958	R 2 721	R 4 285		
					13.71 % *		
Weisser Riesling (Ryn Riesling)	A 0 - 1070				67 480	67 480	21.08
	F 2257 - 2592			58 361		58 361	18.23
	K 3985 - 4320			13 140		13 140	4.11
	M 4657 - 4992	1 020				1 020	0.32
	N 4993 - 5328	42 576		860		43 436	13.57
	R 6338 - 6673	6 860	57 640	66 240		130 740	40.85
	Z > 9025	5 880				5 880	1.84
Sub-tot	56 336	57 640	138 601	67 480	320 057	100.00	
VALUE	R 327 469	R 368 896	R 639 947	R 60 732	R 1 397 043		
AVE PRICE R/T	R 5 813	R 6 400	R 4 617	R 900	R 4 365		
					27.59 % *		
Bukettraube	A 0 - 1070				8 300	8 300	100.00
	Sub-tot				8 300	8 300	100.00
	VALUE				R 8 300	R 8 300	
	AVE PRICE R/T				R 1 000	R 1 000	
					1.82 % *		
Pinot Gris	F 2257 - 2592				4 540	4 540	2.02
	I 3265 - 3648	64 908				64 908	28.85
	K 3985 - 4320	28 532				28 532	12.68
	L 4321 - 4656	5 758		48 840		54 598	24.27
	N 4993 - 5328		51 470			51 470	22.88
	P 5666 - 6001			16 500		16 500	7.34
	R 6338 - 6673	4 400				4 400	1.96
Sub-tot	103 598	51 470	65 340	4 540	224 948	100.00	
VALUE	R 398 547	R 265 071	R 317 706	R 11 350	R 992 673		
AVE PRICE R/T	R 3 847	R 5 150	R 4 862	R 2 500	R 4 413		
					14.03 % *		
Viognier	D 1585 - 1920				7 098	7 098	0.46
	F 2257 - 2592			53 180	56 780	109 960	7.08
	G 2593 - 2928	20 130				20 130	1.30
	H 2929 - 3264	383 940	43 770	262 852	57 460	748 022	48.18
	I 3265 - 3648			57 818		57 818	3.72
	J 3649 - 3984	14 160		12 208		26 368	1.70
	K 3985 - 4320	177 117		107 680		284 797	18.34
	L 4321 - 4656	29 519	38 556	125 811		193 886	12.49
	M 4657 - 4992	6 730		29 800		36 530	2.35
	N 4993 - 5328	8 212				8 212	0.53
	O 5329 - 5665	30 077		10 014		40 091	2.58
	P 5666 - 6001			550		550	0.04
	S 6674 - 7009			4 338		4 338	0.28
	W 8018 - 8353			7 700		7 700	0.50
	Z > 9025			7 010		7 010	0.45
	Sub-tot	669 885	82 326	678 961	121 338	1 552 510	100.00
	VALUE	R 2 339 699	R 304 812	R 2 541 626	R 341 471	R 5 527 609	
AVE PRICE R/T	R 3 493	R 3 702	R 3 743	R 2 814	R 3 560		
					20.88 % *		

* This percentage represents the grapes that were traded in the variety/grape group concerned as a percentage of the total grapes of this variety/grape group (including deliveries to producer cellars by members) pressed.

VARIETY	PRICE CATEGORY RAND / TON	KILOGRAM					INDUSTRY	% OF TOTAL
		CONSTANTIA / STELLENBOSCH / GRABOUW / DURBANVILLE /	WORCESTER / BREEDEKLOOF / LITTLE KAROO / ROBERTSON	PAARL / MALMESBURY	OLIFANTS- RIVER / ORANGE- RIVER			
Clairette blanche	D 1585 - 1920	53 960				53 960	98.31	
	O 5329 - 5665			379		379	0.69	
	R 6338 - 6673			550		550	1.00	
	Sub-tot	53 960		929		54 889	100.00	
	VALUE	R 97 128		R 5 660		R 102 788		
	AVE PRICE R/T	R 1 800		R 6 092		R 1 873		
						1.16 % *		
Other White	A 0 - 1070	33 230	118 920	5 802 140	269 581	6 223 871	86.69	
	B 1071 - 1248				99 220	99 220	1.38	
	C 1249 - 1584			24 990	7 640	32 630	0.45	
	D 1585 - 1920			8 320	147 348	155 668	2.17	
	E 1921 - 2256			83 660		83 660	1.17	
	F 2257 - 2592				41 360	41 360	0.58	
	G 2593 - 2928			960		960	0.01	
	H 2929 - 3264			23 380	32 040	55 420	0.77	
	I 3265 - 3648	57 933	1 000		22 380	81 313	1.13	
	J 3649 - 3984			20 380		20 380	0.28	
	K 3985 - 4320	153 920	5 940	62 410		222 270	3.10	
	L 4321 - 4656			16 140	19 617	35 757	0.50	
	M 4657 - 4992			12 660		12 660	0.18	
	N 4993 - 5328	12 220				12 220	0.17	
	O 5329 - 5665	1 800	26 100	66 513		94 413	1.32	
	P 5666 - 6001			6 010		6 010	0.08	
	R 6338 - 6673			1 250		1 250	0.02	
	Sub-tot	259 103	151 960	6 128 813	639 186	7 179 062	100.00	
	VALUE	R 932 632	R 230 270	R 4 255 521	R 845 661	R 6 264 083		
AVE PRICE R/T	R 3 599	R 1 515	R 694	R 1 323	R 873			
						7.67 % *		
All Varieties	A 0 - 1070	53 238	197 540	5 886 553	1 381 615	7 518 946	6.18	
	B 1071 - 1248	0	0	170 160	408 800	578 960	0.48	
	C 1249 - 1584	7 650	43 510	1 267 841	416 530	1 735 531	1.43	
	D 1585 - 1920	97 606	272 080	433 995	6 707 931	7 511 612	6.17	
	E 1921 - 2256	396 408	173 290	842 900	356 180	1 768 778	1.45	
	F 2257 - 2592	4 054 444	382 164	5 483 171	342 860	10 262 639	8.43	
	G 2593 - 2928	2 010 140	233 865	4 557 360	1 528 688	8 330 053	6.85	
	H 2929 - 3264	6 252 437	407 716	4 050 132	3 555 597	14 265 882	11.72	
	I 3265 - 3648	2 641 345	485 055	3 355 742	415 720	6 897 862	5.67	
	J 3649 - 3984	1 724 675	272 435	3 995 391	1 062 897	7 055 398	5.80	
	K 3985 - 4320	3 759 867	660 890	6 094 885	71 660	10 587 302	8.70	
	L 4321 - 4656	6 676 036	481 826	3 463 939	187 358	10 809 159	8.88	
	M 4657 - 4992	5 836 371	213 420	2 317 284	15 644	8 382 719	6.89	
	N 4993 - 5328	2 069 345	280 592	1 638 319	20 602	4 008 858	3.29	
	O 5329 - 5665	1 127 758	277 058	1 194 131	48 448	2 647 395	2.18	
	P 5666 - 6001	3 057 697	162 483	982 903	90 664	4 293 747	3.53	
	Q 6002 - 6337	3 837 050	127 360	684 684	12 160	4 661 254	3.83	
	R 6338 - 6673	2 866 704	79 120	798 866	141 120	3 885 810	3.19	
	S 6674 - 7009	3 686 602	131 720	749 239	90 634	4 658 195	3.83	
	T 7010 - 7345	142 451	0	67 700	95 290	305 441	0.25	
	U 7346 - 7681	235 035	65 385	90 123	0	390 543	0.32	
	V 7682 - 8017	54 820	74 597	152 908	21 860	304 185	0.25	
	W 8018 - 8353	6 760	0	55 404	0	62 164	0.05	
	X 8354 - 8689	11 871	26 610	63 356	0	101 837	0.08	
	Y 8690 - 9025	72 349	33 901	91 182	0	197 432	0.16	
	Z > 9025	109 417	0	341 150	0	450 567	0.37	
Sub-tot	50 788 076	5 082 617	48 829 318	16 972 258	121 672 269	100.00		
VALUE	R 233 304 566	R 20 121 211	R 168 400 311	R 40 333 484	R 462 159 571			
AVE PRICE R/T	R 4 594	R 3 959	R 3 449	R 2 376	R 3 798			
						9.57 % *		

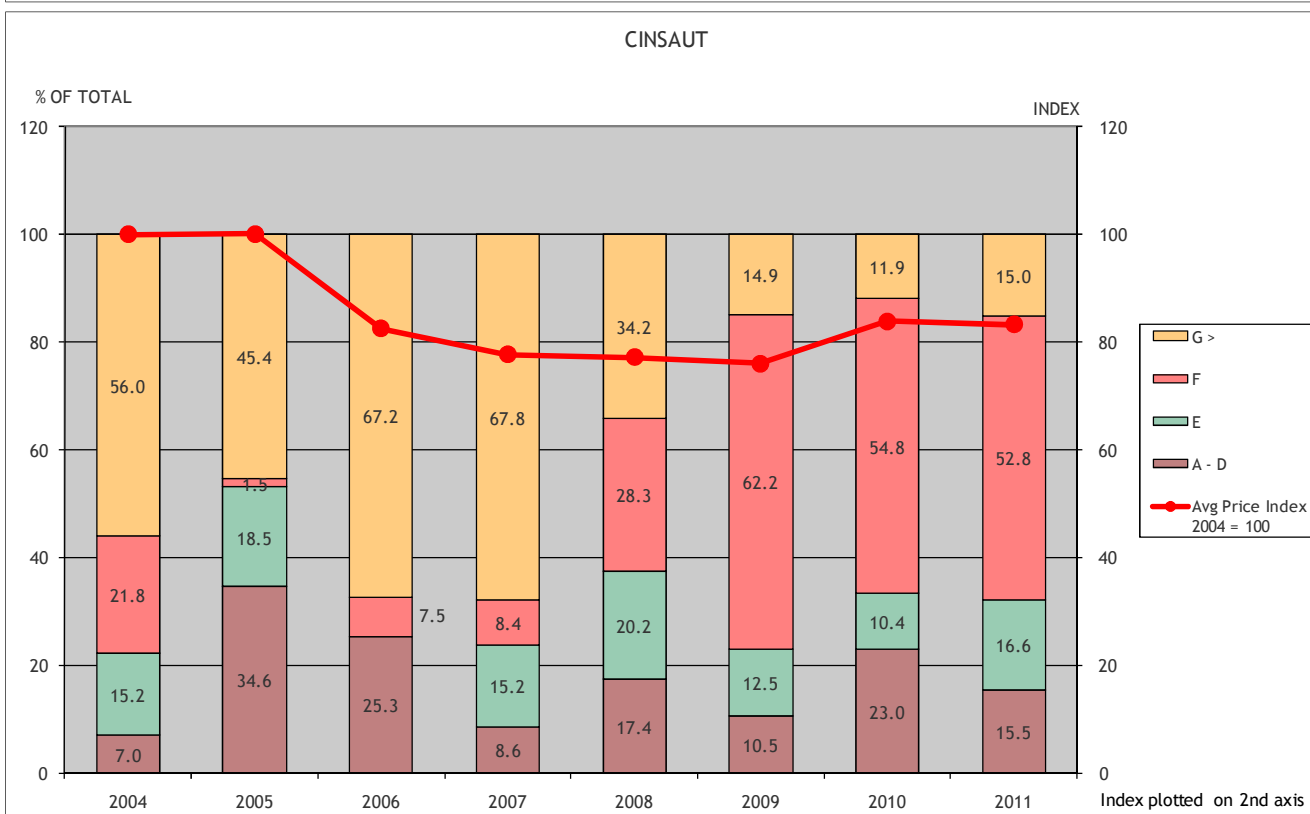
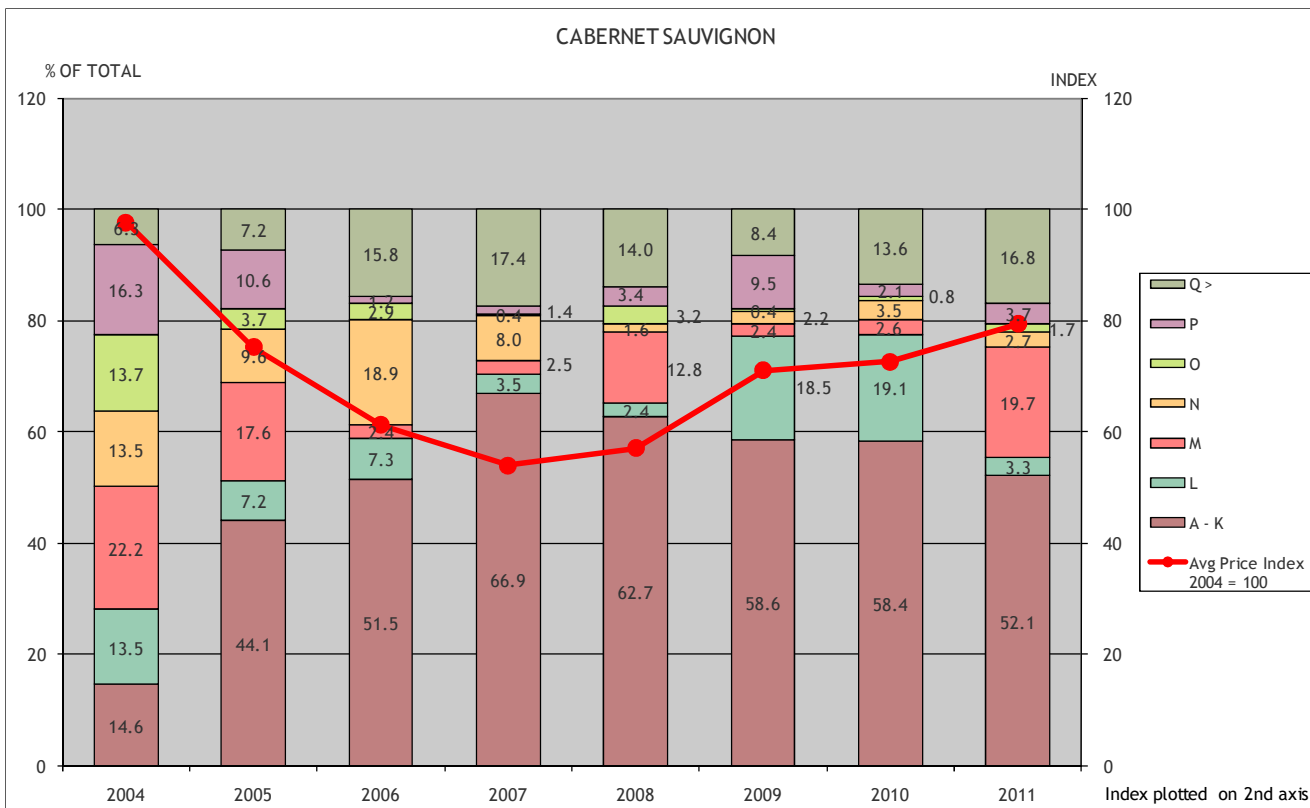
* This percentage represents the grapes that were traded in the variety/grape group concerned as a percentage of the total grapes of this variety/grape group (including deliveries to producer cellars by members) pressed.

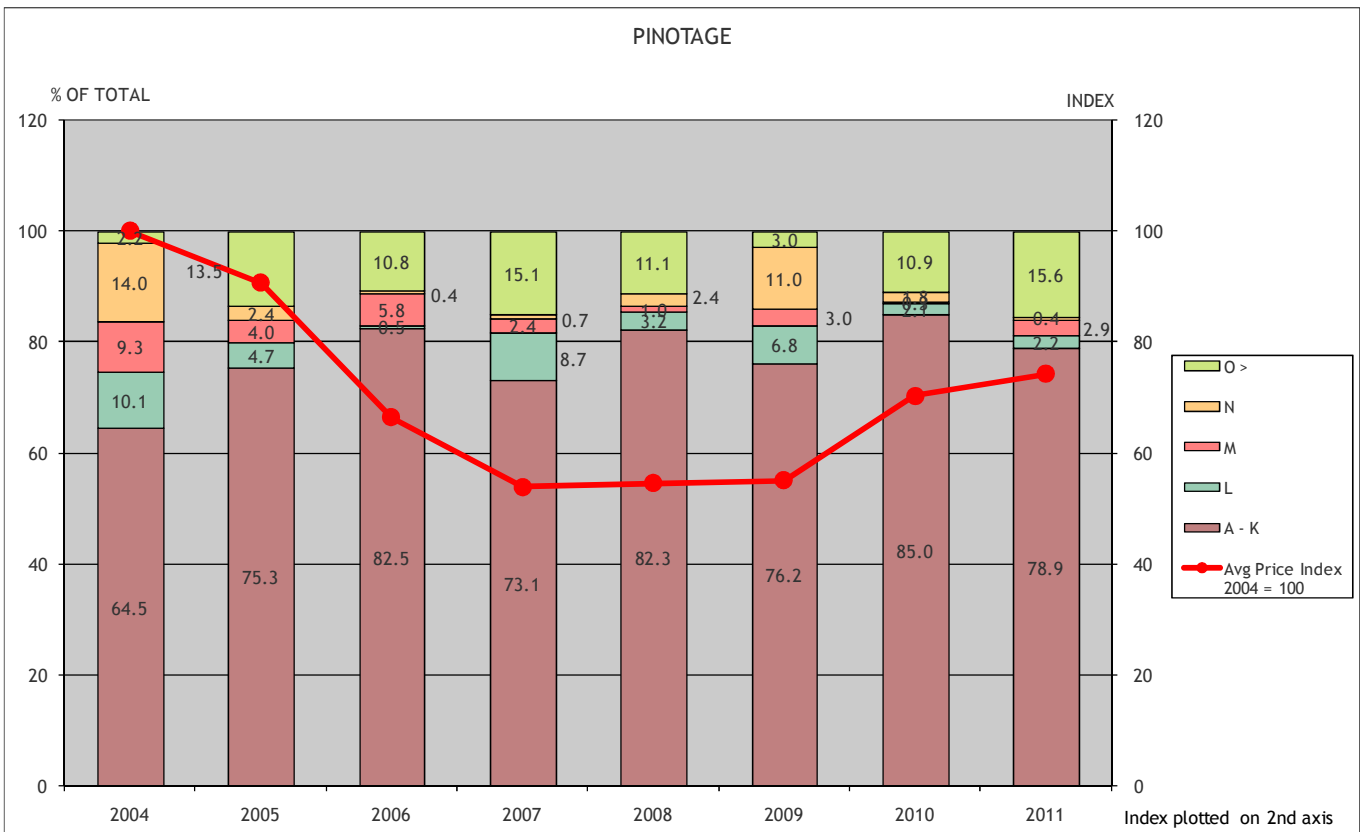
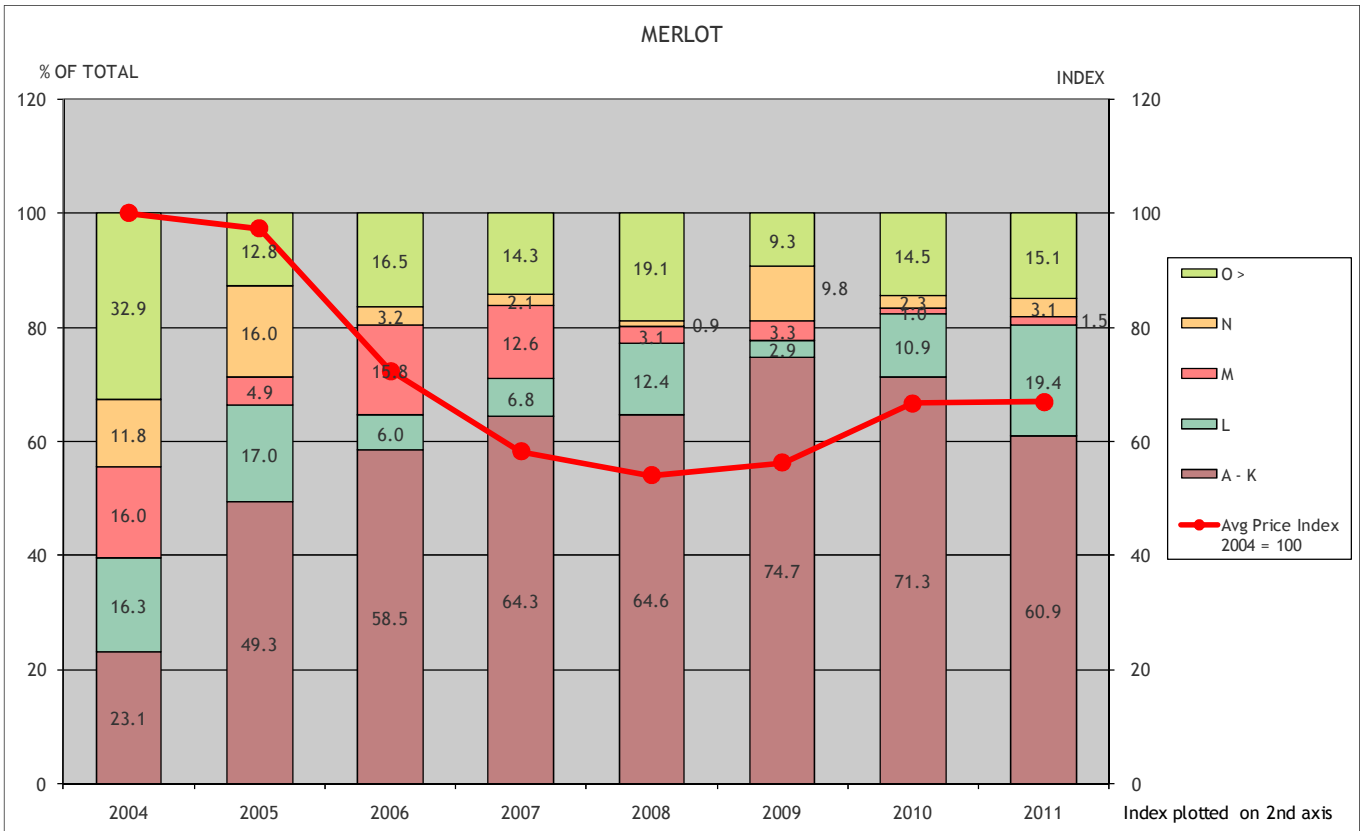
PRICE RANGES OF SELECTED VARIETIES (R/TON)

Please note that the price categories are adjusted each year with the % increase or decrease in the average grape price from the previous to the current year. This is done so that over the years, categories can be compared in real terms.

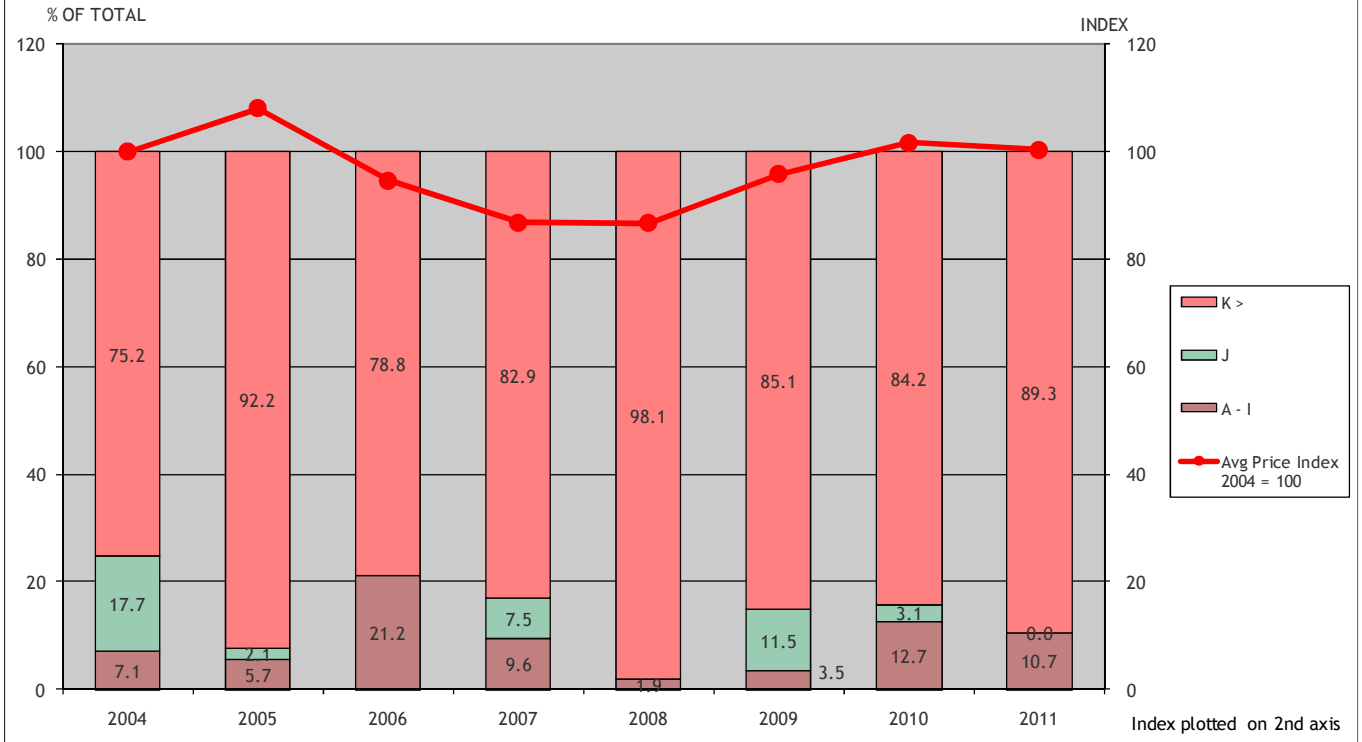
Price ranges (rand/ton)

A	0 - 1113	E	1999 - 2348	I	3397 - 3796	M	4846 - 5195	Q	6245 - 6593	U	7643 - 7992	Y	9042 - 9390
B	1114 - 1299	F	2349 - 2697	J	3797 - 4146	N	5196 - 5544	R	6594 - 6943	V	7993 - 8341	Z	>9390
C	1300 - 1648	G	2698 - 3047	K	4147 - 4495	O	5545 - 5894	S	6944 - 7292	W	8342 - 8691		
D	1649 - 1998	H	3048 - 3396	L	4496 - 4845	P	5895 - 6244	T	7293 - 7642	X	8692 - 9041		

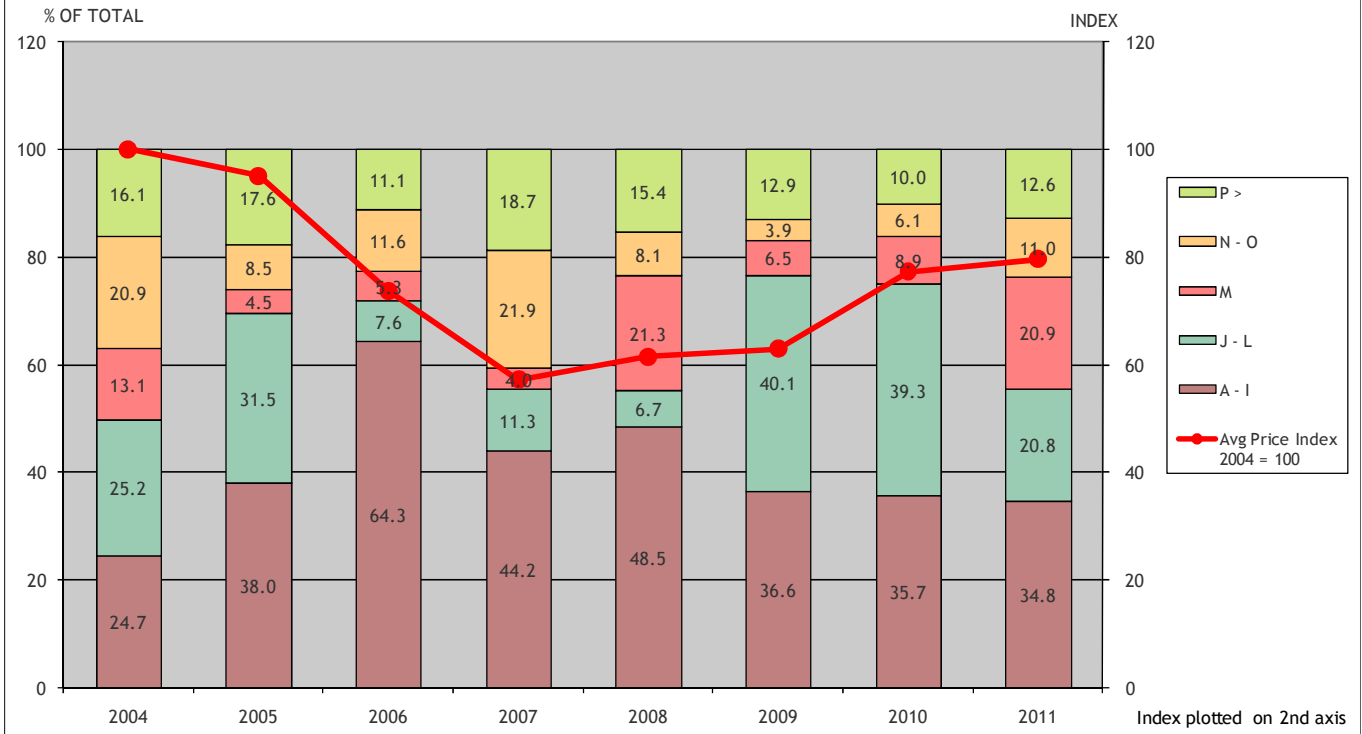




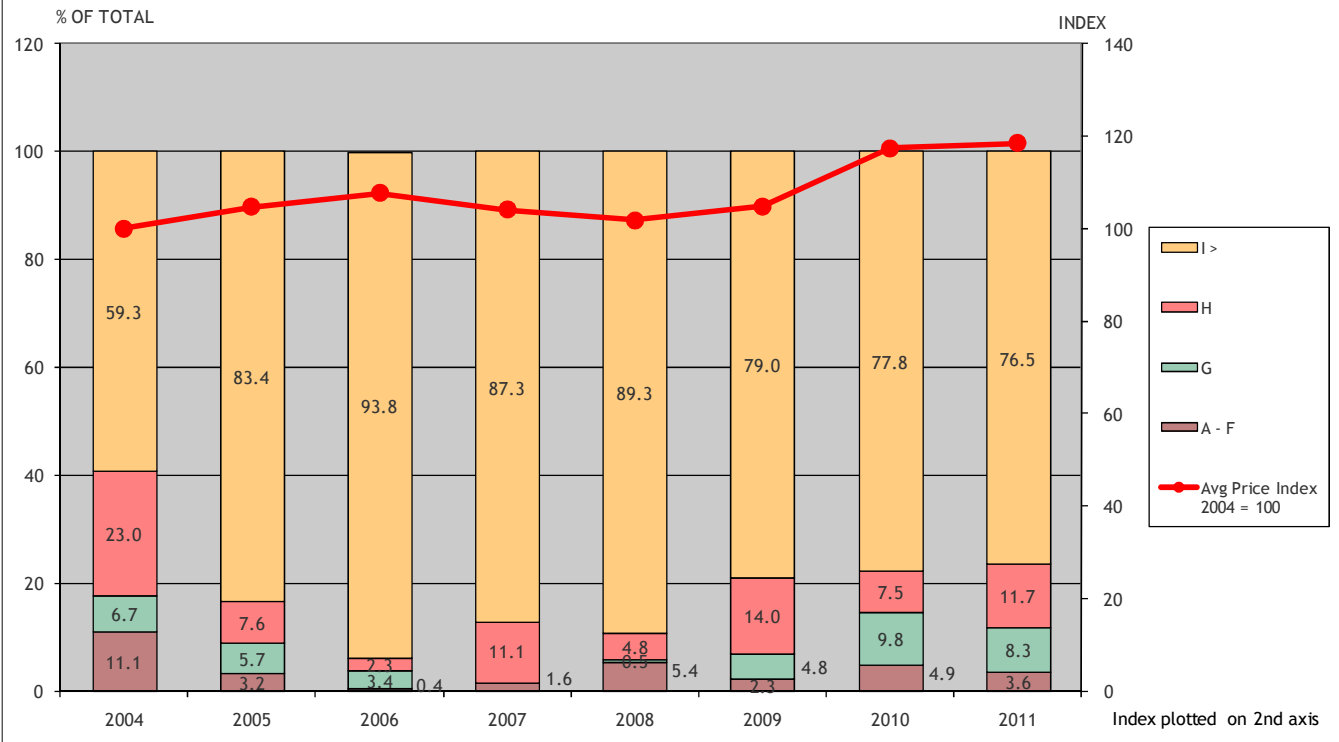
PINOT NOIR



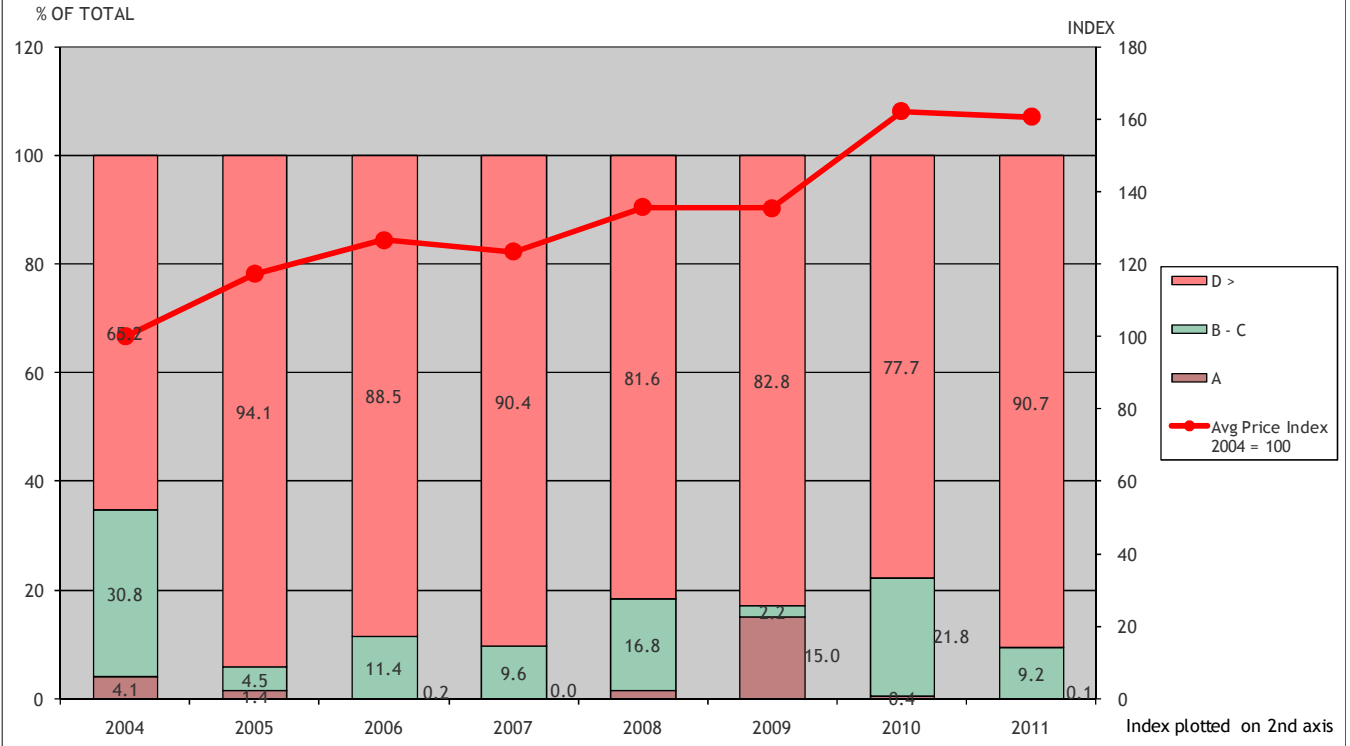
SHIRAZ



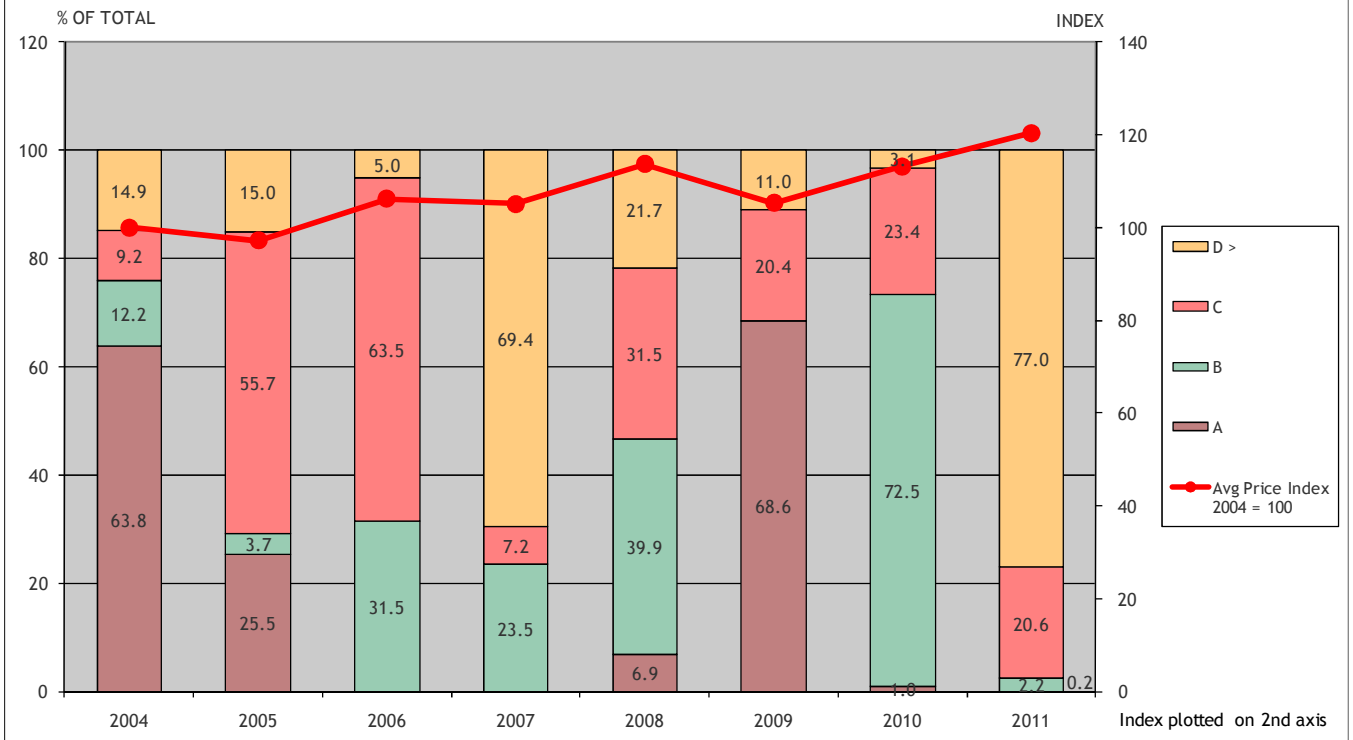
CHARDONNAY



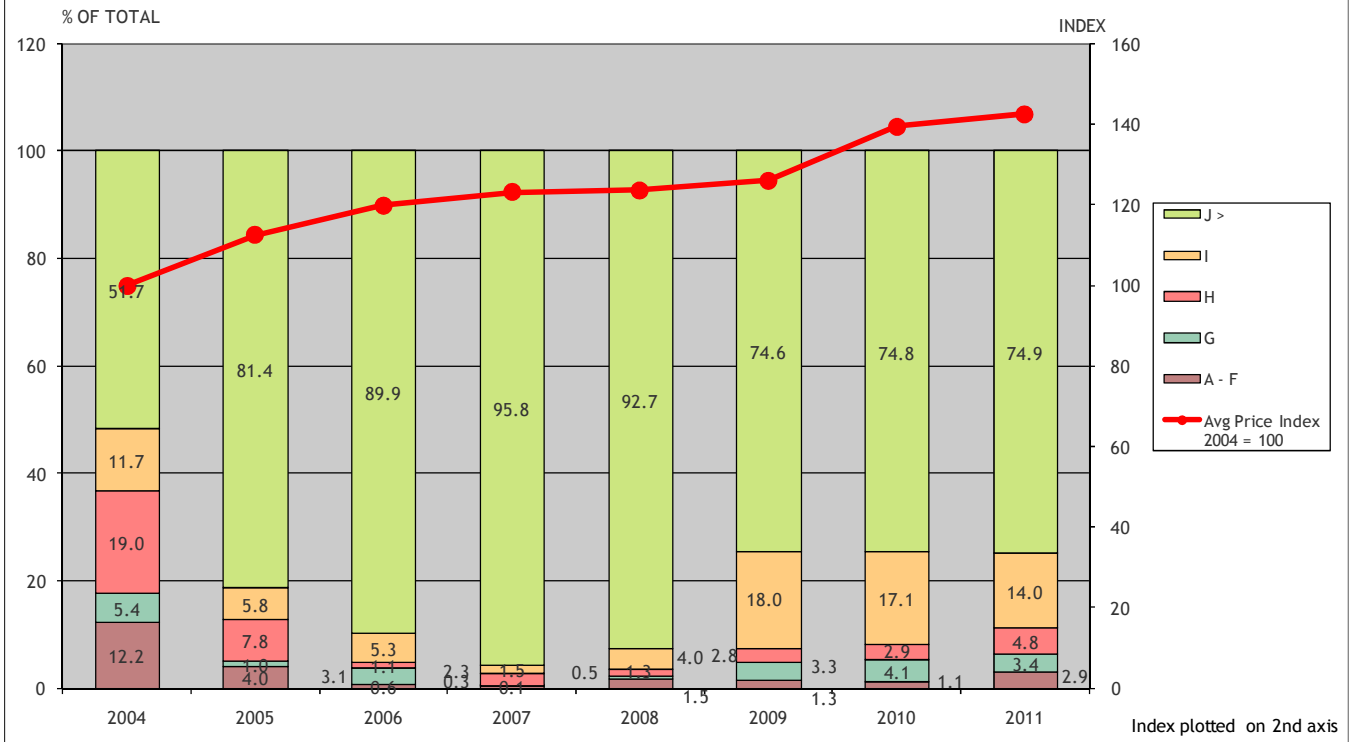
CHENIN BLANC



COLOMBAR



SAUVIGNON BLANC



AVERAGE PRICES OF GRAPES SOLD FOR THE PRODUCTION OF WINE (R/TON) PER DISTRICT

VARIETY	YEAR	ORANGE RIVER	OLIFANTS RIVER	MALMESBURY	LITTLE KAROO	PAARL	ROBERTSON	STELLENBOSCH	WORCESTER	BREDEKLOOF	INDUSTRY	
Cabernet Franc	2005			4 410		4 162	3 074	4 346			4 275	
	2006		2 600	3 463		3 557		3 035	1 717		3 019	
	2007			2 935		3 237	3 636	2 808	5 841		3 011	
	2008			3 846		2 854	4 500	2 922	4 827		2 970	
	2009			3 515		3 836	4 500	3 589	6 875		3 722	
	2010			3 988		3 036	4 427	3 469	5 286		3 455	
	2011			3 016		3 742		3 538	5 205		3 519	
	% ±											
	2011/2010			-24.37		23.25		1.99		-1.53		1.85
	2005		3 214	4 133	4 133	4 612	4 352	3 908	4 290	3 551	2 767	4 212
	2006	950	2 313	3 451	3 451	5 000	3 575	2 875	3 610	1 764	2 126	3 428
2007	950	2 077	2 924	2 924	5 240	2 904	3 334	3 198	2 877	2 079	3 026	
2008	1 199	2 374	3 090	3 090	5 763	3 022	3 245	3 473	2 674	4 800	3 196	
2009	1 133	2 969	3 932	3 932	3 776	4 047	4 156	4 156	5 253	5 934	3 984	
2010	1 300	3 028	4 057	4 057	3 750	3 760	4 293	4 293	4 769	4 769	4 073	
2011	1 400	3 179	4 227	4 227	3 781	3 928	4 251	4 788	4 251	5 000	4 348	
% ±												
2011/2010	7.69	4.99	4.19	4.19	0.83	4.47	10.78	0.00	-0.98	4.84	6.75	
2005			4 454	4 454		2 500					4 454	
2006			4 000	4 000		2 200		3 000			3 860	
2007			4 125	4 125		3 893					3 560	
2008			4 566	4 566		4 200		3 500			4 403	
2009			4 777	4 777		4 200		3 500	4 000		4 400	
2010			4 439	4 439		3 324		3 500	4 000		3 742	
2011			4 530	4 530		3 218		3 500			3 551	
% ±												
2011/2010			2.05	2.05		-3.19		0.00			-5.10	
2005			1 883	1 883		2 442	1 800	2 392	4 500	1 800	2 271	
2006						2 365	1 200	2 344	1 200	4 500	2 139	
2007						2 223	1 700	2 167		1 896	2 126	
2008	1 351		2 500	2 500		2 397	1 850	2 072		750	2 092	
2009	600					2 314	2 500	2 306			2 311	
2010	1 397		3 296	3 296		2 373		2 563			2 292	
2011	1 999		3 639	3 639		2 421		2 984	2 200		2 462	
% ±												
2011/2010	43.09		10.41	10.41		2.02		16.43			7.42	
2005						2 758		3 000			2 807	
2006						2 510		2 200			2 438	
2007						2 330		2 200			2 311	
2008						2 413		2 200			2 366	
2009						1 929		2 350			1 965	
2010						3 526		1 900			3 334	
2011						2 700		4 000			2 968	
% ±												
2011/2010						-23.43		110.53			-10.98	
2005	850	2 785	4 136	4 136	2 833	4 234	3 590	3 998	4 852	2 474	3 963	
2006	1 261	2 057	3 120	3 120	1 910	3 205	2 567	3 399	1 461	1 876	3 186	
2007	950	1 987	2 778	2 778	1 910	2 765	2 698	3 108	2 123	2 123	2 960	
2008	2 117	2 302	2 991	2 991	5 009	2 817	2 674	3 269	3 755	3 800	3 077	
2009	1 275	2 924	3 635	3 635	6 000	3 309	3 329	3 791	5 956	4 500	3 651	
2010	1 300	2 400	3 780	3 780	6 000	3 178	3 179	3 822	4 531	3 921	3 667	
2011	1 161	2 975	3 893	3 893		3 292	3 666	4 184	4 049		3 896	
% ±												
2011/2010	-10.69	23.96	2.99	2.99		3.59	15.32	9.47	-10.64		6.24	

VARIETY	YEAR	ORANGE RIVER	OLIFANTS RIVER	MALMESBURY	LITTLE KAROO	PAARL	ROBERTSON	STELLENBOSCH	WORCESTER	BREDEKLOOF	INDUSTRY	
Petit Verdot	2005			4 352		4 355	2 500	4 295		3 681	4 284	
	2006			3 181		3 536	2 600	4 201			3 708	
	2007		1 300	2 989	4 000	3 459		3 927	4 871		3 476	
	2008			3 824		3 318	1 704	4 024	5 000	4 500	3 608	
	2009			3 603		3 926	3 000	4 185	7 142	4 500	3 968	
	2010			3 870		4 221	3 200	3 964	4 500	4 500	4 039	
	2011			3 554		3 672	3 311	4 129	3 520	5 000	3 787	
	% ±											
	2011/2010			-8.17		-13.01	3.47	-21.78	4.16			-6.24
	2005			4 769	4 423	4 350	3 506	4 788	4 109		4 549	
	2006			4 850	3 036	3 884	3 560	4 690	3 798		4 172	
2007			4 500	3 975	3 758	3 488	4 701	2 842		4 163		
2008			4 989	4 377	4 358	4 335	4 846	6 087		4 603		
2009			5 419	4 200	4 389	5 041	5 227	6 571		4 883		
2010			5 500	4 188	4 605	5 081	4 805	5 798		4 819		
2011			5 139	3 281	4 835	4 842	5 481	5 728		5 157		
% ±												
2011/2010			-6.56	-21.66	4.99	-4.70	14.07	-1.21		3.39	7.01	
2005	850		2 735	3 349	3 829	2 100	3 080	2 428	2 000	3 202		
2006	1 076		2 345	2 717	3 124	1 583	2 567	1 620	1 989	2 602		
2007	950		2 064	2 730	2 960	1 818	2 586	2 006	2 893	2 631		
2008	1 152		2 181	2 541	2 929	1 873	2 872	1 600	6 246	2 655		
2009	1 294		2 919	3 361	3 506	2 500	3 419	4 500	5 093	3 393		
2010	1 288		3 043	3 428	4 000	3 694	3 951	4 500	5 000	3 586		
2011	1 165		3 046	3 611	3 407	2 424	4 584	4 500	3 422	3 819		
% ±												
2011/2010	-9.55	0.10	5.34	-7.77	-35.91	16.02	0.00	-31.56			6.50	
2005						3 122	2 555	4 320			2 948	
2006						2 447	1 453	4 108	1 200		1 823	
2007						2 783	1 862	5 000			2 857	
2008						2 574	2 277	5 200			3 313	
2009						2 378	2 500	5 500			2 776	
2010						4 431	2 500	5 800			4 282	
2011						3 425	2 500				3 330	
% ±												
2011/2010						-22.70	0.00				-22.23	
2005	850	2 726		4 400	2 617	2 588	2 600	2 479	2 600	2 783		
2006	949	2 199		1 899	1 969	1 750	1 467	1 765	1 822	1 822		
2007	992	1 632		1 678	1 840	1 731	1 900	1 774	1 703	1 703		
2008	2 500	1 418		1 456	1 701	1 400	1 600	2 000	1 507	1 507		
2009	1 294	3 000	2 200	2 747	2 840				2 641	2 641		
2010	1 300	2 066		2 133	2 850				2 103	2 103		
2011	1 535	2 533		2 028	2 214				2 442	2 442		
% ±												
2011/2010	18.08	22.60		-4.92	-22.32						16.12	
2005	3 700	2 567	4 312	4 603	4 266	3 445	4 026	5 722	2 526	3 907		
2006	1 299	2 102	3 368	4 731	3 593	2 929	3 004	1 686	1 400	3 027		
2007		1 831	3 666	4 866	3 719	3 773	3 006	4 547		3 255		
2008		2 353	3 686	5 270	3 701	3 567	3 155	4 481	4 500	3 329		
2009	2 810	4 372	4 685	5 904	4 301	4 685	3 908	5 110	5 749	4 090		
2010		3 177	4 442	4 666	4 094	4 643	4 208	4 947	5 000	4 212		
2011		2 972	4 193	4 197	4 165	4 784	4 407	4 968	5 500	4 199		
% ±												
2011/2010	-6.45		-5.61	-10.05	1.73	3.04	4.73	0.42	10.00		-0.31	

VARIETY	YEAR	ORANGE RIVER	OLIFANTS RIVER	MALMESBURY	LITTLE KAROO	PAARL	ROBERTSON	STELLENBOSCH	WORCESTER	BREDEKLOOF	INDUSTRY	
Tinta Barocca	2005			2 892				2 892	4 000		3 068	
	2006			3 000				1 494			2 812	
	2007			3 007				965	2 500		2 817	
	2008		1 200	4 035	4 000			2 271	4 000		3 684	
	2009		1 200	4 407				1 735	4 000		4 243	
	2010		1 000	4 083			3 500	3 279	4 500		3 759	
	2011			3 425			3 500	3 201	5 000		3 412	
	% ±											
	2011/2010			-16.12			0.00		-2.38	11.11		-9.23
	2005		5 599	6 000	4 236	2 000	4 293	3 480	4 120	4 875	2 894	4 205
	2006		6 000	712	3 700		3 705	3 697	3 424	6 500	3 007	3 622
2007	515	2 000	1 201	3 147	4 000	2 975	4 110	3 474	3 885	2 462	1 916	
2008	2 000		4 666	3 258	5 000	3 492	4 203	3 500	4 574	3 715	2 993	
2009			2 898	4 047	5 000	3 951	4 500	4 231	4 085	2 846	4 033	
2010			1 123	3 849	5 000	4 163	4 850	3 576	4 032	4 435	3 799	
2011				4 117		3 940		3 815	5 111	6 000	3 088	
% ±												
2011/2010			-61.25	6.96		-5.36	7.78	6.68	26.76	35.29	-18.72	
2005				1 500							1 500	
2006				1 669				2 500			1 714	
2007				1 610							1 610	
2008		700		1 650				2 950			1 322	
2009				1 800							1 800	
2010			1 000								1 000	
2011			1 000								1 000	
% ±												
2011/2010			0.00								0.00	
2005				1 700		2 123		2 024		900	2 040	
2006						2 171		2 033	900		2 021	
2007				1 800		2 424		2 578			2 370	
2008		830				2 370		2 400		750	2 018	
2009						2 433		2 900			2 450	
2010			750			2 548					2 103	
2011			900			2 093					1 854	
% ±												
2011/2010			20.00			-17.86					-11.84	
2005	850		2 492	3 934	3 450	3 608	3 506	4 096	5 918	3 172	3 841	
2006	1 218		2 826	3 501		3 573	3 595	4 058	2 760	3 800	3 711	
2007			2 699	3 507	6 500	3 334	3 270	3 997	6 719		3 630	
2008	1 661		2 357	3 372	5 779	3 707	3 540	4 162	6 561		3 739	
2009	1 294		3 787	3 702	5 893	4 057	3 655	4 607	5 287		4 185	
2010	1 300		2 668	3 760	6 000	3 932	3 779	5 006	4 937		4 224	
2011	1 200		2 731	4 092	6 000	3 856	4 203	4 832	5 687		4 285	
% ±												
2011/2010	-7.69		2.36	8.83	0.00	-2.43	11.22	-3.48	15.19		1.44	
2005	850		1 407	2 059	1 500	2 355	1 000	2 395	2 473	1 567	2 198	
2006	976		1 542	2 214	2 500	2 495	756	2 442	925	1 669	2 141	
2007	950		1 352	2 563	2 500	2 793	1 400	2 635	1 981	1 614	2 352	
2008	986		1 469	2 286	1 800	3 241	2 500	2 877	3 204	1 384	2 349	
2009	1 192		2 037	2 340		3 751	1 400	3 066	3 500	1 821	2 813	
2010	1 249		1 866	2 426		3 666	1 500	3 288	4 364	2 000	2 785	
2011	1 366		1 768	2 678		3 919	1 600	3 605	5 300	1 575	2 739	
% ±												
2011/2010	9.37		-5.25	10.39		6.90	6.67	9.64	21.45	-21.25	-1.65	

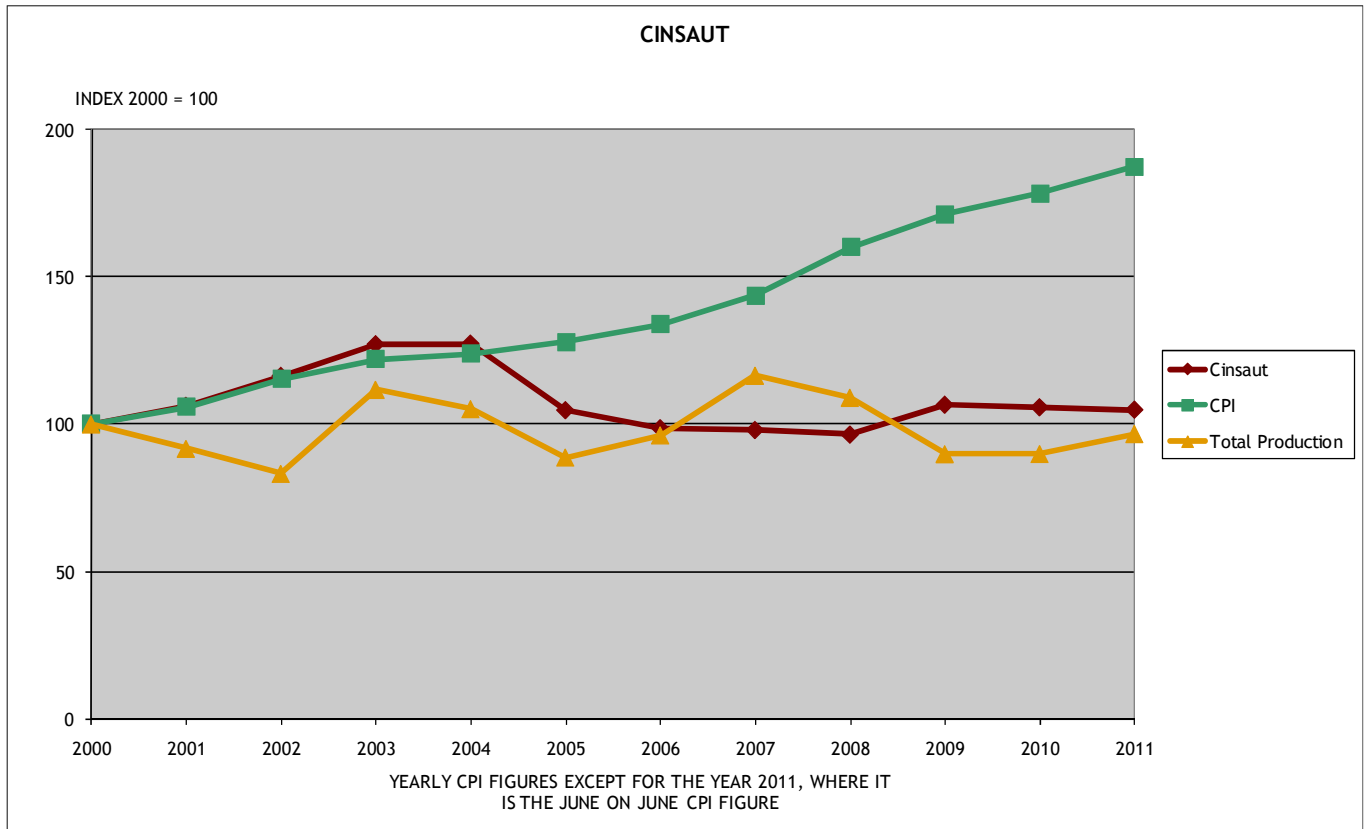
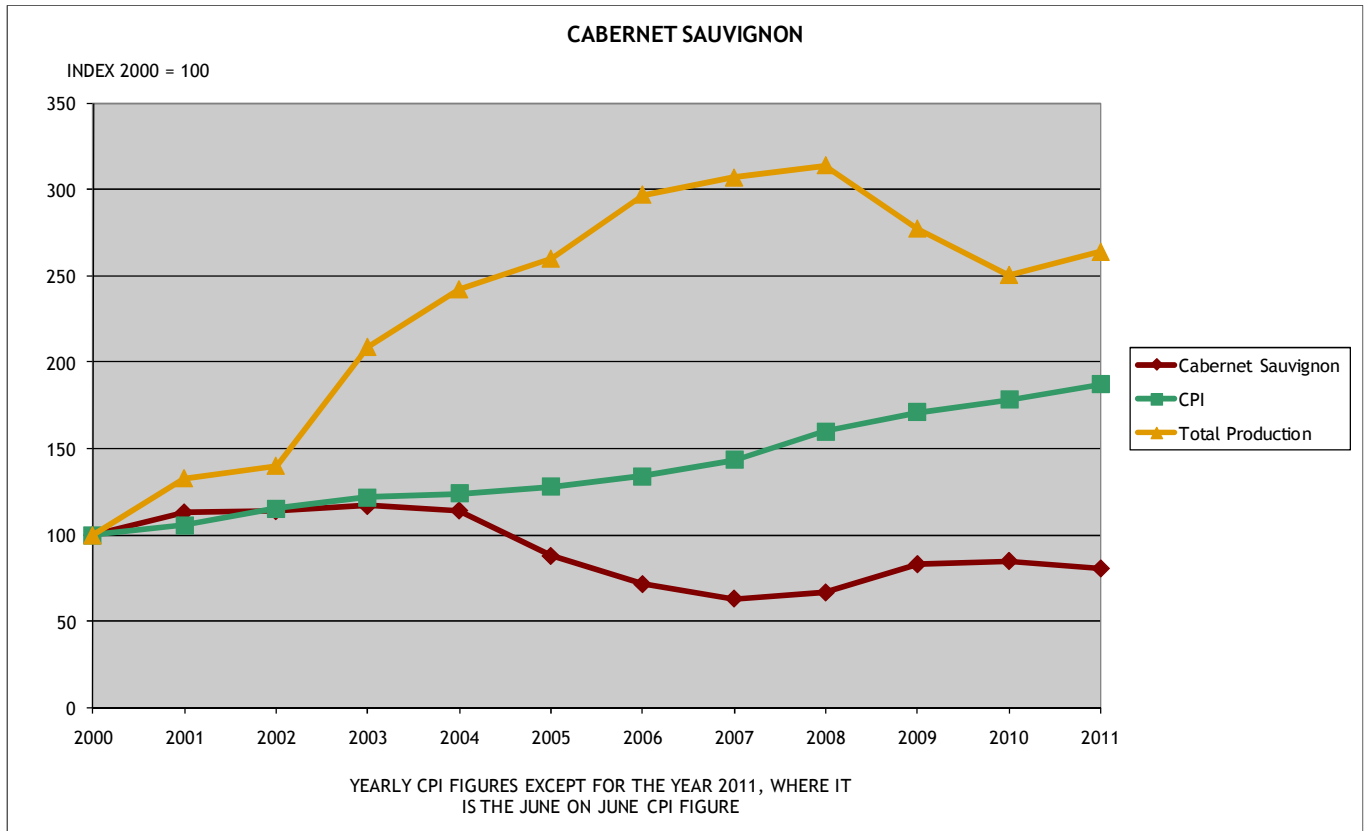
VARIETY	YEAR	ORANGE RIVER	OLIFANTS RIVER	MALMESBURY	LITTLE KAROO	PAARL	ROBERTSON	STELLENBOSCH	WORCESTER	BREDEKLOOF	INDUSTRY	
Clairette blanche	2005							1 000			1 000	
	2006							1 000	900		966	
	2007		1 300	4 500		2 700		1 000			1 455	
	2008		1 300	5 411				1 000		750	1 373	
	2009			5 250				1 500			1 718	
	2010			6 000				1 500			1 548	
	2011			6 092				1 800			1 873	
	% ±											
	2011/2010			16.04				20.00				9.02
	2005	1 041	1 200	1 727		1 313	1 600				1 700	1 180
	2006	1 185	1 250	1 450		1 623	1 460			900		1 168
2007	961	1 329	1 500		1 758	1 500					1 263	
2008	991	1 246	1 339		1 475	1 500					1 169	
2009	1 163	1 050	1 050		1 961	1 768					1 257	
2010	1 227	1 278	1 250		1 755	1 685					1 337	
2011	1 603	1 724	1 437		2 274	1 793					1 689	
% ±							6.41					
2011/2010	30.64	34.90	14.96		29.57	6.41					26.33	
2005		1 200	1 682								1 502	
2006			1 450								1 450	
2007			1 300								1 300	
2008			690	1 075							835	
2009			855	870							869	
2010		769	1 050								781	
2011		920	1 100								972	
% ±												
2011/2010	19.64	19.64	4.76								24.46	
2005								2 766			2 766	
2006								3 079			3 079	
2007								2 564			2 564	
2008			700					2 910			2 847	
2009								2 952			2 952	
2010								3 271			3 271	
2011								3 672			3 672	
% ±												
2011/2010								12.26			12.26	
2005	850	1 200	1 650		3 000			1 870		1 072	1 348	
2006	1 216	1 250	1 947					1 802	900	2 000	1 211	
2007	975	1 420	2 352				1 000	2 212		2 000	1 521	
2008	950	1 385	2 300			2 000	1 250	2 446		1 924	1 528	
2009			1 945			3 370	1 350	2 543		2 000	2 215	
2010		1 511	1 000	3 070		2 200		2 970		2 000	1 903	
2011	1 481	1 737	1 200			2 671		3 618		1 220	1 800	
% ±												
2011/2010		14.96	20.00			21.41		21.82		-39.00	-5.41	
2005		1 200	1 650			3 637	2 730		2 200		2 295	
2006		1 250	1 450			5 152	4 000			1 500	2 655	
2007		1 500	1 500			4 515	3 000	2 500			3 010	
2008	1 096	1 331	1 000			6 152	3 000		3 000		2 594	
2009			900			11 220	3 500		3 000		6 302	
2010			1 000			12 138	3 750				4 616	
2011		1 622	1 200			16 000	3 916	12 500		4 000	6 251	
% ±												
2011/2010			20.00			31.82	4.43				35.42	

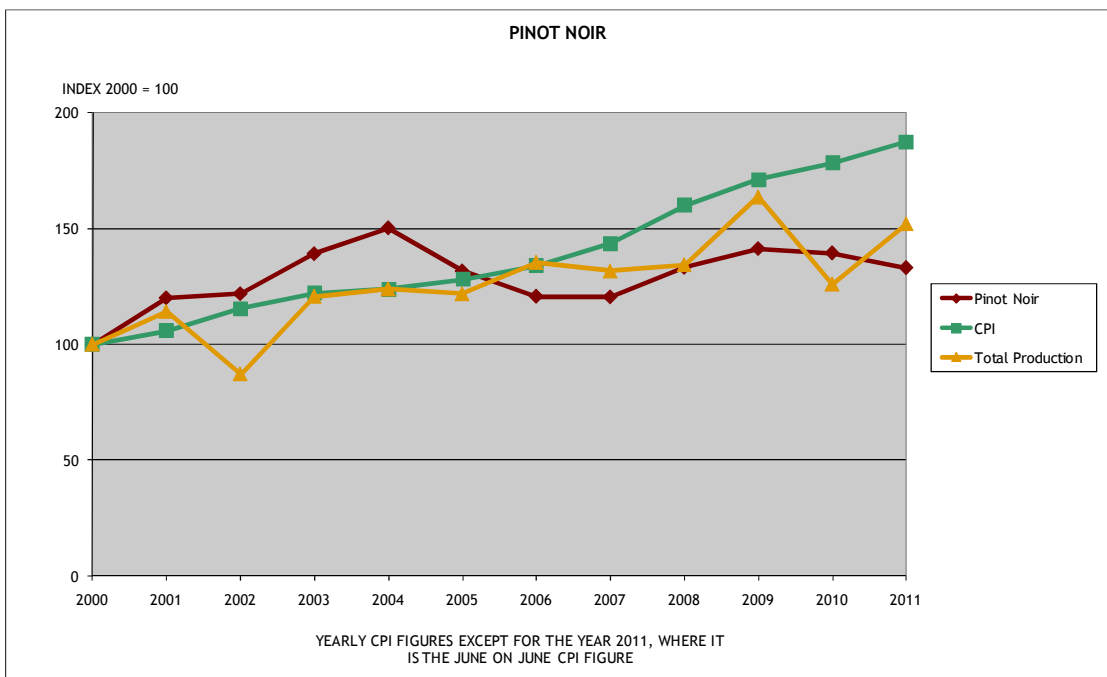
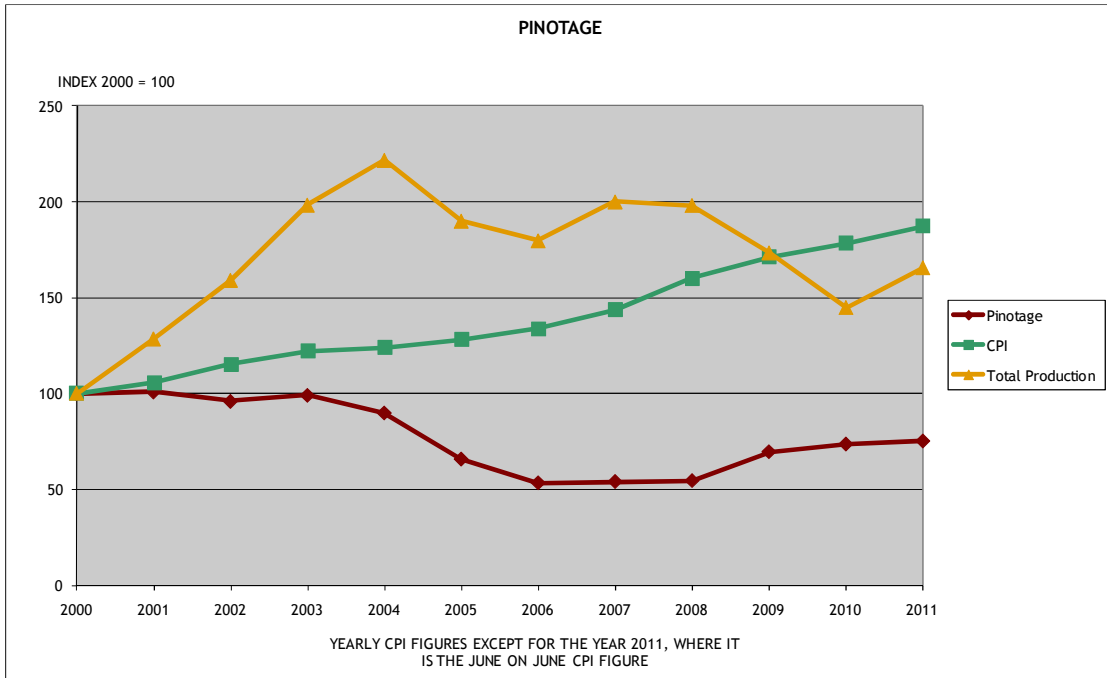
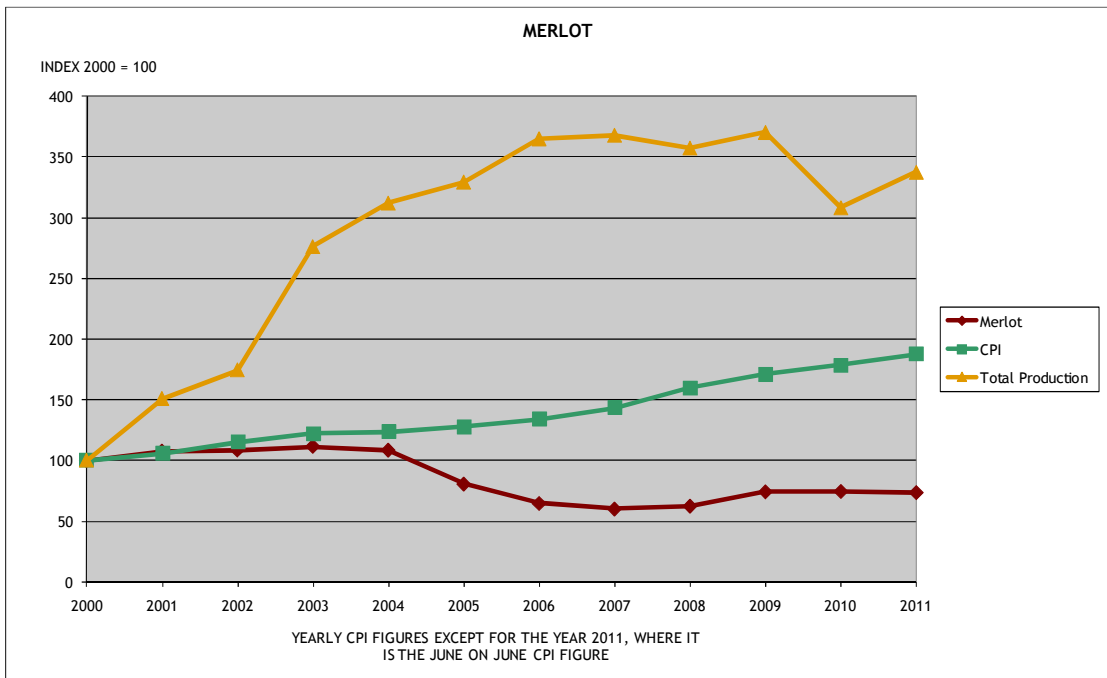
VARIETY	YEAR	ORANGE RIVER	OLIFANTS RIVER	MALMESBURY	LITTLE KAROO	PAARL	ROBERTSON	STELLENBOSCH	WORCESTER	BREEDEKLOOF	INDUSTRY	
Pinot gris	2005							3 070			3 070	
	2006					1 530		3 627	1 000		2 031	
	2007					1 260		3 505			3 166	
	2008		2 300			4 500	3 375	3 888		4 000	3 692	
	2009					3 415		4 770		4 500	4 444	
	2010		2 500			6 200		4 893		4 815	4 659	
	2011		2 500		4 862			3 729	6 500	5 150	4 413	
	% ±											
	2011/2010		0.00						-23.79		6.96	-5.28
	2005	850	4 496	4 526		3 667	5 995	4 589	5 035	3 850	4 439	
	2006	1 016	5 338	4 855	4 066	3 847	6 729	4 622	2 885	3 833	4 561	
2007		4 576	5 087	6 587	5 788	5 305	4 727	5 372	3 726	4 580		
2008		4 794	4 509	2 000	3 883	6 128	4 815	5 673	3 508	4 668		
2009		6 687	5 147		3 998	5 637	5 388	6 370	2 000	5 165		
2010		5 992	5 373		3 839	5 772	5 396	5 998	2 000	5 279		
2011		3 851	5 039		3 941	5 427	5 293	5 426	2 250	4 966		
% ±												
2011/2010		-6.08	-35.73	-6.22		2.66	-5.98	-1.91	-9.54	12.50	-5.93	
2005				3 060		2 398	4 348	2 664	2 863	2 000	2 563	
2006			1 250	3 702		2 450	3 652	3 169	1 180	1 300	2 811	
2007			1 300	3 955		2 521	5 608	2 941	4 327	1 300	2 774	
2008			3 254	3 552		2 715	6 130	2 075	2 099	750	2 952	
2009			5 336	4 195		2 810	7 320	3 936	5 173	4 500	3 682	
2010			4 608	4 439		2 622	7 165	4 496	4 970		3 957	
2011			2 646	5 270		2 987	6 923	3 863	5 427		3 679	
% ±												
2011/2010			-42.58	18.72		13.92	-3.38	-14.08	9.20		-7.03	
2005			3 000	5 506	2 600	4 837	4 800	3 760		5 000	4 177	
2006			3 200	4 623	2 600	4 492	4 800	3 864		3 500	4 046	
2007			3 012	4 017	2 750	4 082	4 875	4 032		3 500	3 950	
2008			2 357	2 019	3 048	4 040	3 446	3 905		2 500	3 311	
2009			3 700	4 036	3 200	4 030	3 742	4 394		3 342	4 119	
2010			2 899	2 722	3 500	3 928	3 966	3 705	3 729	4 500	3 450	
2011			2 814	3 409		4 026	3 369	3 483	3 788	4 500	3 560	
% ±												
2011/2010			-2.93	25.24		2.49	-15.05	-5.99	1.58	0.00	3.19	
2005				3 800	4 800	3 667		2 386		3 000	3 077	
2006				3 800	3 800	3 839		3 778		3 800	3 811	
2007				4 000	3 500	3 628		3 939		4 000	3 791	
2008			1 027	6 000	7 000	3 717		6 493		3 500	3 849	
2009				6 200	8 300	5 129		5 211		6 400	5 567	
2010			750	5 328		5 135		3 340		6 100	4 209	
2011			900	2 536		6 170		6 088		6 400	4 365	
% ±												
2011/2010			20.00	-52.40		20.16		82.28	-15.38	4.92	3.71	
2005			1 007	520	2 800	1 960	636	1 973	993		935	
2006		950	1 692	454		928	809	2 218	1 702		707	
2007		993	948	501		1 563	4 719	2 765	848	1 300	799	
2008		917	954	436		2 125	2 296	3 693	1 031		927	
2009		1 144	4 893	451		3 716	4 306	3 823	1 888		1 481	
2010		1 300	2 909	531		3 088	5 500	4 117	1 856		1 481	
2011		1 221	1 343	561		2 859	5 500	3 599	667		873	
% ±												
2011/2010		-6.08	-53.83	5.65		-7.42	0.00	-12.58	-64.06		-41.25	
2005		1 023	2 148	3 529	3 669	3 796	3 153	3 881	3 659	2 376	3 593	
2006		1 088	3 328	3 048	3 866	3 335	2 737	3 475	1 515	2 278	3 128	
2007		932	1 615	2 734	4 249	3 115	3 186	3 357	3 798	2 537	2 971	
2008		994	2 060	2 998	5 011	3 287	3 449	3 591	3 571	3 017	3 173	
2009		1 183	3 726	3 606	5 248	3 780	4 076	4 182	5 482	3 783	3 917	
2010		1 258	2 805	3 770	4 911	3 735	3 960	4 312	5 011	4 149	3 949	
2011		1 404	2 413	3 249	4 996	3 744	4 016	4 566	4 744	3 818	3 798	
% ±												
2011/2010		11.61	-13.98	-13.82	1.73	0.24	1.41	5.89	-5.33	-7.98	-3.82	

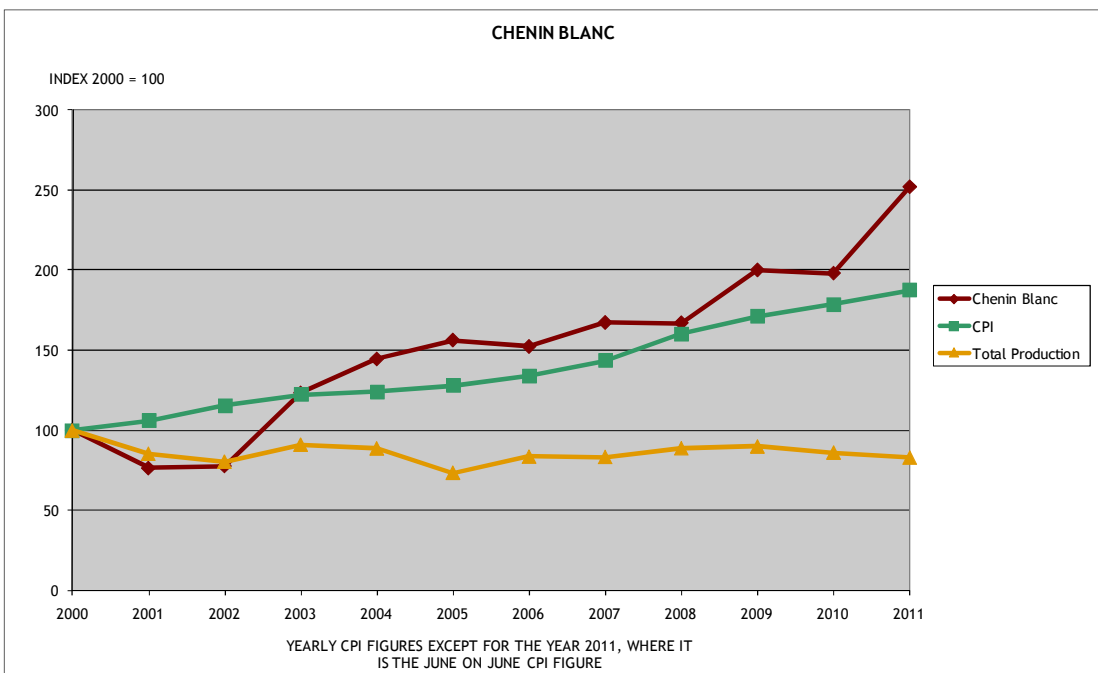
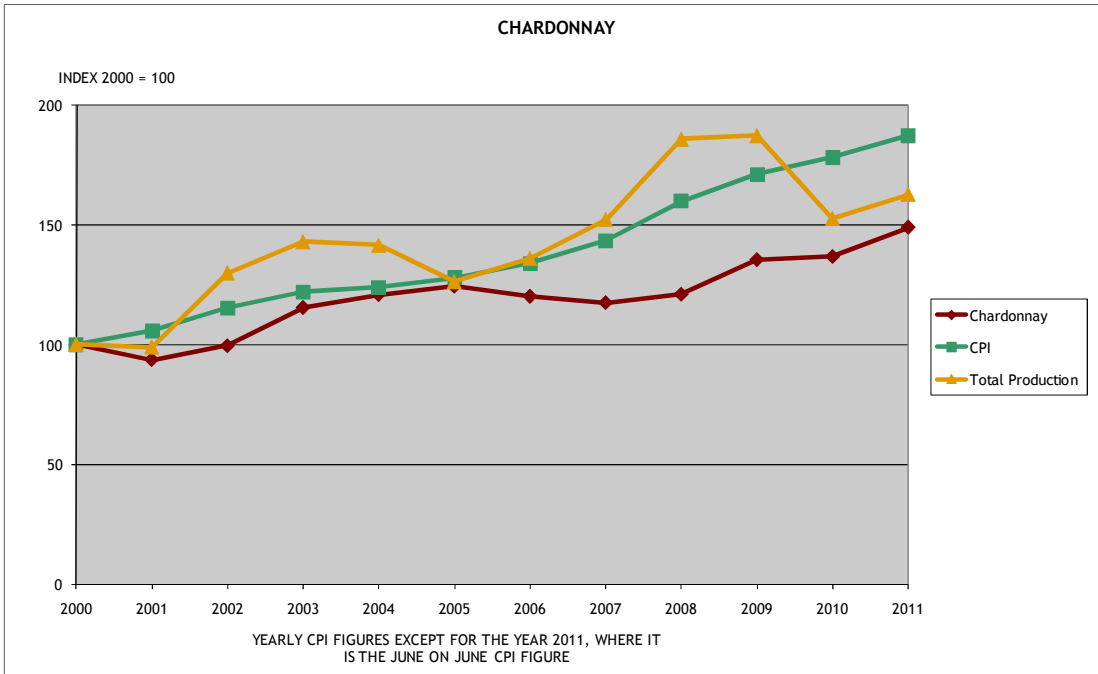
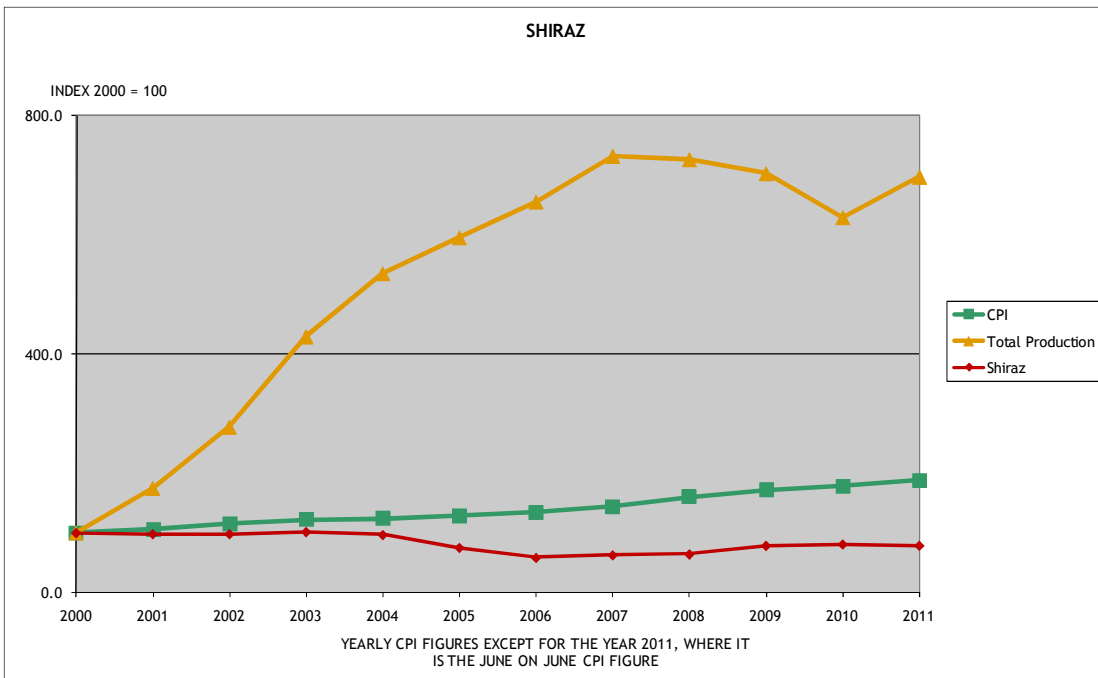
AVERAGE PRICES OF GRAPES SOLD FOR THE PRODUCTION OF WINE (R/TON)

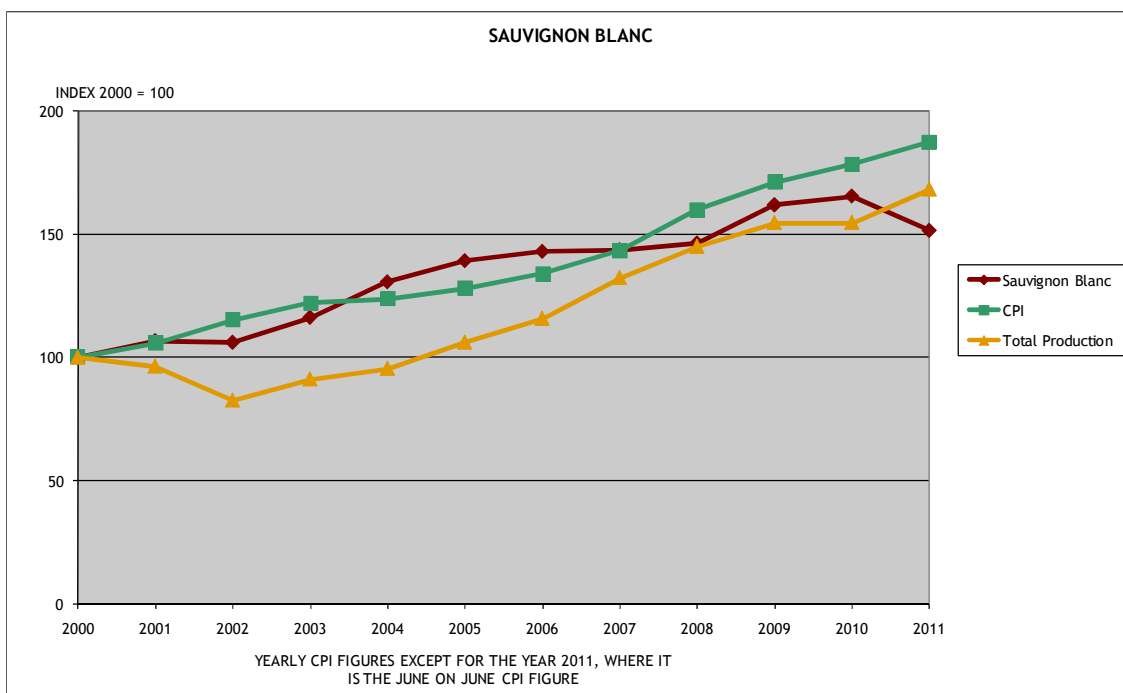
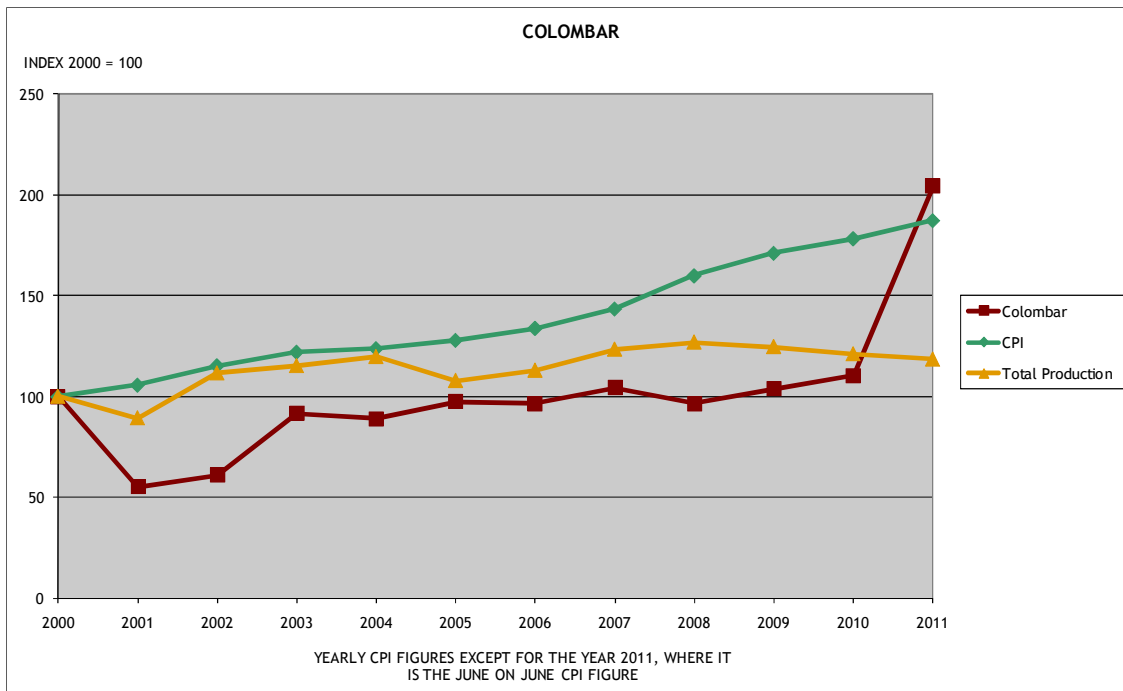
VARIETY	2002	2003	2004	2005	2006	2007	2008	2009	2010	2011	% ± 2011/2010
Cabernet Franc	5010	5 436	5 426	4 275	3 019	3 011	2 970	3 722	3 455	3 519	1.85
Cabernet Sauvignon	5458	5 605	5 476	4 212	3 428	3 026	3 196	3 984	4 073	4 348	6.75
Carignan	2546	3 055	3 315	4 454	3 860	3 560	4 403	4 400	3 742	3 551	-5.10
Cinsaut	2521	2 753	2 757	2 271	2 139	2 126	2 092	2 311	2 292	2 462	7.42
Gamay noir	2836	3 315	3 236	2 807	2 438	2 311	2 366	1 965	3 334	2 968	-10.98
Merlot	5331	5 477	5 327	3 963	3 186	2 960	3 077	3 651	3 667	3 896	6.24
Petit Verdot	5490	5 421	5 326	4 284	3 708	3 476	3 608	3 968	4 039	3 787	-6.24
Pinot noir	4211	4 806	5 191	4 549	4 172	4 163	4 603	4 883	4 819	5 157	7.01
Pinotage	4673	4 827	4 376	3 202	2 602	2 631	2 655	3 393	3 586	3 819	6.50
Roobernet	3976	4 681	3 507	2 948	1 823	2 857	3 313	2 776	4 282	3 330	-22.23
Ruby Cabernet	3806	3 775	3 639	2 783	1 822	1 703	1 507	2 641	2 103	2 442	16.12
Shiraz (Syrah)	5111	5 294	5 036	3 907	3 027	3 255	3 329	4 090	4 212	4 199	-0.31
Tinta Barocca	3017	3 182	3 240	3 068	2 812	2 817	3 684	4 243	3 759	3 412	-9.23
Other red	4214	4 663	4 575	4 205	3 622	1 916	2 993	4 033	3 799	3 088	-18.72
Bukettraube	840	1 100	1 229	1 500	1 714	1 610	1 322	1 800	1 000	1 000	0.00
Chardonnay	3075	3 567	3 733	3 841	3 711	3 630	3 739	4 185	4 224	4 285	1.44
Chenin blanc	1093	1 735	2 032	2 198	2 141	2 352	2 349	2 813	2 785	2 739	-1.65
Clairette blanche	600	724	819	1 000	966	1 455	1 373	1 718	1 548	1 873	20.99
Colombar	738	1 111	1 079	1 180	1 168	1 263	1 169	1 257	1 337	1 689	26.33
Crouchen (Cape Riesling)	1396	1 614	1 750	2 040	2 021	2 370	2 018	2 450	2 103	1 854	-11.84
Gewurztraminer	2157	3 386	2 247	2 766	3 079	2 564	2 847	2 952	3 271	3 672	12.26
Muscat d'Alexandrie (Hanepoot)	841	770	1 074	1 348	1 211	1 521	1 528	2 215	1 903	1 800	-5.41
Muscat de Frontignan (Muscadel)	1536	1 050	1 794	2 295	2 655	3 010	2 594	6 302	4 616	6 251	35.42
Palomino (White French)	700	799	879	1 502	1 450	1 300	835	869	781	972	24.46
Pinot gris	2212	2 909	2 827	3 070	2 031	3 166	3 692	4 444	4 659	4 413	-5.28
Sauvignon blanc	3380	3 705	4 166	4 439	4 561	4 580	4 668	5 165	5 279	4 966	-5.93
Sémillon	1837	2 480	2 587	2 563	2 811	2 774	2 952	3 682	3 957	3 679	-7.03
Viognier	4127	4 294	4 088	4 177	4 046	3 950	3 311	4 119	3 450	3 560	3.19
Weisser Riesling (Rhine Riesling)	1753	2 638	2 870	3 077	3 811	3 791	3 849	5 567	4 209	4 365	3.71
Other white	1687	701	738	935	707	799	927	1 481	1 486	873	-41.25
All Red Varieties	4925	5 112	4 947	3 864	3 140	2 961	3 127	3 865	3 925	4 033	2.75
All White Varieties	2357	2 438	2 713	3 103	3 109	2 988	3 241	3 998	3 984	3 509	-11.92
All Varieties	3953	4 041	4 133	3 593	3 128	2 971	3 173	3 917	3 949	3 798	-3.82

PRICE INDEX VS CPI









COMPARISON OF SOUTH AFRICAN GRAPE PRICES WITH COMPETITOR COUNTRIES IN RAND VALUE FOR 2009

Cultivar	California			South Africa		
	Average price (ZAR/ton)		% growth 2010/2009	Average price (ZAR/ton)		% growth 2010/2009
	2009	2010		2009	2010	
Cabernet Sauvignon	9,021	7,555	-16.25%	2,710	2,930	8.12%
Merlot	5,272	4,499	-14.66%	2,467	2,789	13.08%
Shiraz	5,450	4,485	-17.70%	2,692	2,918	8.40%
Pinotage	12,192	4,485	-63.21%	2,128	2,523	18.56%
Total Red	7,131	6,017	-15.62%	2,534	2,818	11.21%
Sauvignon blanc	6,409	5,208	-18.73%	3,220	3,429	6.47%
Chardonnay	6,761	5,260	-22.20%	2,712	2,757	1.64%
Chenin blanc	2,217	2,073	f	1,376	1,607	16.79%
Total White	6,170	4,938	-19.96%	1,905	2,096	10.03%

Sources:

1. Californian Grape Crush Report : 2010
2. SAWIS 2009 (combined prices from independent and producer cellar grape producers)
3. "The Currency Site" <http://www.oanda.com/>