



**South African Wine Industry Statistics**  
is published annually during June and is available on request, free of charge,  
at SAWIS, P O Box 238, Paarl, 7620 or Main Road 312, Paarl

This booklet and lots of other information also available on our website at: [www.sawis.co.za](http://www.sawis.co.za)

**Contact person:**

Bonita Floris                      (021) 807 5711      Fax: 807 6021      E-mail: [floris@sawis.co.za](mailto:floris@sawis.co.za)

NB: To understand the statistics contained herein, it is important to first read the definitions on page 3.

OOK BESKIKBAAR IN AFRIKAANS

<b>1</b>	<b>DEFINITIONS</b>	<b>3</b>
<b>2</b>	<b>EXTENT OF THE SOUTH AFRICAN WINE INDUSTRY</b>	<b>4</b>
2.1	EXTENT OF THE TOTAL WINE INDUSTRY	4
2.2	EXTENT OF THE WINE INDUSTRY	5
<b>3</b>	<b>WINE INDUSTRY STRUCTURE</b>	<b>6</b>
<b>4</b>	<b>WINE REGIONS (For statistical purposes)</b>	<b>7</b>
<b>5</b>	<b>VINES AND AREA UNDER VINES</b>	<b>8</b>
5.1	VINE TYPES	8
5.2	GEOGRAPHIC DISTRIBUTION OF SOUTH AFRICAN WINE GRAPE VINEYARDS PER WINE REGION	8
5.3	TOTAL HECTARES WINE GRAPE VINEYARDS PLANTED AND UPROOTED	9
5.4	WINE GRAPE VINEYARDS PLANTED PER WINE REGION	10
5.5	WINE GRAPE VINEYARDS UPROOTED PER WINE REGION	10
5.6	AREA DISTRIBUTION OF WINE GRAPE VARIETIES	11
5.7	WINE GRAPE VARIETIES PER WINE REGION	12
5.8	AGE OF VINES PER WINE REGION	13
<b>6</b>	<b>PRODUCTION AND UTILISATION OF CROP</b>	<b>14</b>
6.1	TOTAL CROP	14
6.2	DISTRIBUTION OF PRODUCTION BETWEEN RED AND WHITE	14
6.3	VARIETIES UTILISED FOR WINE MAKING PURPOSES	15
6.4	GRAPE PRODUCTION FOR WINE MAKING PURPOSES PER WINE REGION	16
6.5	CERTIFIED WINE	17
6.6	CERTIFIED WINE PER PRODUCER GROUP	18
<b>7</b>	<b>PRODUCERS' SALES, INCOME AND PRICES</b>	<b>19</b>
7.1	PRODUCERS' SALES AND INCOME	19
7.2	AVERAGE PRICES OF WINE SOLD IN BULK	20
7.3	AVERAGE PRICES OF GRAPES SOLD FOR THE PRODUCTION OF WINE	21
7.3.1	PRICES FOR DELIVERIES TO PRODUCER CELLARS BY MEMBERS	21
7.3.2	OTHER PRICES	22
7.4	PARTICULARS OF PACKAGED WINE SOLD ON THE LOCAL MARKET	23
7.4.1	TYPE OF CONTAINERS (NATURAL WINE ONLY)	23
7.4.2	TYPE OF WINE SOLD IN 750ml GLASS CONTAINERS	24
7.4.3	AVERAGE WHOLESALE PRICES OF WINE	25
<b>8</b>	<b>EXPORTS</b>	<b>26</b>
8.1	TOTAL QUANTITY OF WINE EXPORTED	26
8.2	TYPES OF WINE AND OTHER LIQUOR PRODUCTS EXPORTED	26
8.3	PACKAGED AND BULK NATURAL WINE EXPORTS PER COUNTRY	27
8.4	PACKAGED NATURAL WINE EXPORTS PER COUNTRY	27
8.5	BULK NATURAL WINE EXPORTS PER COUNTRY	27
8.6	NATURAL WINE EXPORTED IN CONTAINERS	28
<b>9</b>	<b>IMPORTS</b>	<b>29</b>
9.1	IMPORTS TO SOUTH AFRICA - TOTAL	29
9.2	IMPORTS TO SOUTH AFRICA - PACKAGED AND BULK	29
<b>10</b>	<b>LIQUOR CONSUMPTION IN SOUTH AFRICA</b>	<b>30</b>
10.1	WINE	30
10.2	SPIRITS	30
10.3	PER CAPITA CONSUMPTION IN SOUTH AFRICA	31
10.4	MARKET FOR ALL SPIRITS IN SOUTH AFRICA	31
10.5	MARKET FOR ALCOHOLIC BEVERAGES IN SOUTH AFRICA	31
<b>11</b>	<b>TAXES</b>	<b>32</b>
11.1	EXCISE DUTY	32
11.2	VALUE ADDED TAX (VAT)	32
11.3	ESTIMATED STATE REVENUE FROM WINE PRODUCTS	33
11.4	STATE REVENUE FROM WINE PRODUCTS VERSUS PRODUCERS' INCOME	33
<b>12</b>	<b>INTERNATIONAL COMPARISONS</b>	<b>34</b>
12.1	AREA UNDER VINES AND WINE PRODUCTION	34
12.2	AREA UNDER VINES (WHITE, RED AND SELECTED VARIETIES)	34
12.3	PER CAPITA CONSUMPTION	34

## 1 DEFINITIONS

The **wine industry** in South African context is much wider than signified by the ordinary meaning of the word “wine”. Brandy and its building blocks (wine for brandy and distilling wine) have always formed a significant part of South Africa’s wine industry. In recent years grape juice and grape juice concentrate for use in non-alcoholic beverages, and not just for the sweetening of wine, have also come to the fore. The South African wine industry thus encompasses wine (natural, fortified and sparkling), wine for brandy, distilling wine, brandy and other spirits distilled from distilling wine, and grape juice and grape juice concentrate for use in wine and non-alcoholic products.

Unless otherwise indicated, the following definitions apply in this publication:

**Wine** includes all the products below.

**Natural wine** is non-fortified and non-sparkling wine, including perlé wine which is wine carbonated to the extent that the pressure in the container in which it is sold is between 75 and 300 kPa. It also includes any grape juice or must and grape juice or must concentrate used in the sweetening of such natural wine.

**Fortified wine** is non-sparkling wine which has been fortified with wine spirit. It includes the volume of wine spirit used in the fortification process.

**Sparkling wine** is wine carbonated (either by fermentation or by impregnation with carbon dioxide) to the extent that the pressure in the container in which it is sold is more than 300 kPa. It includes any grape juice or must and grape juice or must concentrate used in the sweetening of such sparkling wine.

**Wine for brandy** is wine specially prepared for double distillation in a pot still and then, as distillate, matured for a period of at least three years in oak casks with a capacity of not more than 340 litres.

**Distilling wine** is wine specially prepared for distillation to spirits intended for use in brandy or other spirits, for fortification of wine or for industrial purposes.

**Grape juice concentrate and grape juice** refers to unfermented, undiluted or concentrated juice from grapes destined for use in non-alcoholic products such as fruit juices.

## 2.1 EXTENT OF THE TOTAL WINE INDUSTRY

GRAPES CRUSHED	2007	2008	2009	2009/2008
	TONS	TONS	TONS	TREND
White varieties	834 282	885 044	864 933	97.7
Red varieties	436 723	454 833	427 650	94.0
Table grapes	80 442	85 735	55 037	64.2
<b>Total</b>	<b>1 351 447</b>	<b>1 425 612</b>	<b>1 347 620</b>	<b>94.5</b>

PRODUCTION	2007	2008	2009	2009/2008
	MILLION ℓ	MILLION ℓ	MILLION ℓ	TREND
Wine	730.4	763.3	805.1	105.5
Wine for brandy	101.5	86.6	71.4	82.4
Distilling wine	146.4	166.6	122.1	73.3
Grape juice concentrate and grape juice	65.2	72.5	34.8	48.0
<b>Total</b>	<b>1 043.5</b>	<b>1 089.0</b>	<b>1 033.4</b>	<b>94.9</b>

PRODUCERS' INCOME	2007	2008	2009	2009/2008
	MILLION RAND	MILLION RAND	MILLION RAND	TREND
Grapes sold to producing wholesalers	265.7	293.7	354.5	120.7
Wine	2 047.6	2 509.3	2 706.5	107.9
Wine for brandy	254.9	219.0	355.4	162.3
Distilling wine, grape juice concentrate and grape juice	284.3	297.9	232.5	78.0
<b>Total</b>	<b>2 852.5</b>	<b>3 319.9</b>	<b>3 648.9</b>	<b>109.9</b>

DOMESTIC SALES	2007	2008	2009	2009/2008
	MILLION ℓ	MILLION ℓ	MILLION ℓ	TREND
Natural wine *	312.1	312.4	296.8	95.0
Fortified wine	34.1	33.7	33.4	99.1
Sparkling wine	9.2	9.7	8.5	87.6
Brandy @ absolute alcohol	20.0	19.3	18.1	93.8

\* Includes wine used in grape-based liquor and alcoholic fruit beverages.

EXPORTS	2007	2008	2009	2009/2008
	MILLION ℓ	MILLION ℓ	MILLION ℓ	TREND
Natural wine	309.3	407.3	389.1	95.5
Fortified wine	0.4	0.4	0.3	75.0
Sparkling wine	2.8	4.0	6.2	155.0
<b>Total</b>	<b>312.5</b>	<b>411.7</b>	<b>395.6</b>	<b>96.1</b>

## 2.2 EXTENT OF THE WINE INDUSTRY

[BACK TO INDEX](#)

	2007	2008	2009	2009/2008
<b>PRODUCTION</b>	<b>MILLION £</b>			<b>TREND</b>
White	466.8	476.3	521.7	109.5
Red	263.7	287.0	283.4	98.7
<b>Total</b>	<b>730.4</b>	<b>763.3</b>	<b>805.1</b>	<b>105.5</b>

	2007	2008	2009	2009/2008
<b>DOMESTIC SALES</b>	<b>MILLION £</b>			<b>TREND</b>
Natural wine	312.1	312.4	296.8	95.0
Fortified wine	34.1	33.7	33.4	99.1
Sparkling wine	9.2	9.7	8.5	87.6
<b>Total</b>	<b>355.4</b>	<b>355.8</b>	<b>338.7</b>	<b>95.2</b>

	2007	2008	2009	2009/2008
<b>EXPORTS</b>	<b>MILLION £</b>			<b>TREND</b>
Natural wine				
White	126.8	173.5	164.5	94.8
Red	164.1	209.3	197.7	94.5
Blanc de Noir / Rosé	18.4	24.5	26.9	109.8
<b>Subtotal</b>	<b>309.3</b>	<b>407.3</b>	<b>389.1</b>	<b>95.5</b>
Sparkling wine	2.8	4.0	6.2	155.0
Fortified wine	0.4	0.4	0.3	75.0
<b>Grand total</b>	<b>312.5</b>	<b>411.7</b>	<b>395.6</b>	<b>96.1</b>

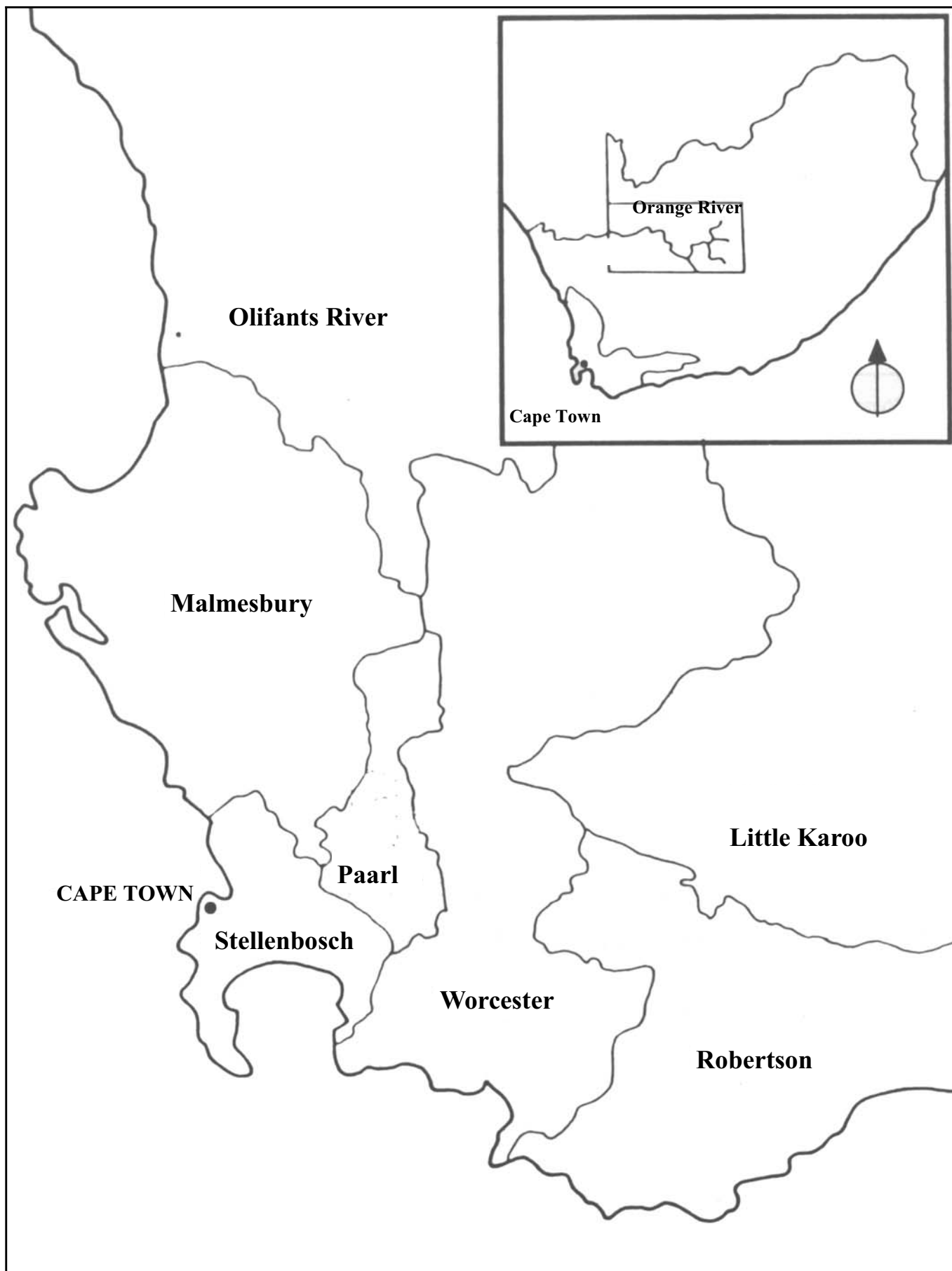
	2007	2008	2009	2009/2008
<b>STOCK (as on 31 December)</b>	<b>MILLION £</b>			<b>TREND</b>
<b>Total</b>	<b>425.2</b>	<b>357.2</b>	<b>361.7</b>	<b>101.3</b>

<b>NUMBER OF PRIMARY GRAPE PRODUCERS</b> 3 667	PER PRODUCTION CATEGORY	
	TONS	NUMBER OF PRODUCERS
	1 - 100	1 536
	> 100 - 500	1 314
	> 500 - 1000	462
	> 1000 - 5000	348
	> 5000 - 10000	7
		3 667
<b># NUMBER OF WINE CELLARS WHICH CRUSH GRAPES</b> 604	57 PRODUCER CELLARS	
	524 PRIVATE WINE CELLARS *	
	23 PRODUCING WHOLESALERS	
	604	
<b>NUMBER OF BULK WINE BUYERS</b> 102	61 WHOLESALERS (Including producing wholesalers)	
	41 EXPORTERS (Buy wine for export only)	
	102	

\* 941 - Registered private wine producers as on 26 May 2010

#### # NUMBER OF WINE CELLARS PER PRODUCTION CATEGORY

CATEGORIES (TONS OF GRAPES CRUSHED - 2009)	NUMBER OF WINE CELLARS			
	TOTAL	PRIVATE WINE CELLARS	PRODUCER CELLARS	PRODUCING WHOLESALERS
1 - 100	281	273	-	8
> 100 - 500	149	143	-	6
> 500 - 1000	55	53	1	1
> 1000 - 5000	64	51	10	3
> 5000 - 10000	13	3	7	3
> 10000	42	1	39	2
<b>Total</b>	<b>604</b>	<b>524</b>	<b>57</b>	<b>23</b>



5 VINES AND AREA UNDER VINES

5.1 VINE TYPES

Vine Types	2007		2008		2009	
	Vines	Hectares	Vines	Hectares	Vines	Hectares
Wine grapes *	306 955 785	101 957	304 461 939	101 325	303 799 724	101 259
Sultana **	17 673 368	9 958	16 767 126	9 486	16 110 027	9 082
Table grapes **	26 226 597	13 435	26 791 289	13 753	27 484 024	14 236
Rootstocks	209 121	67	211 843	73	236 882	79
Currants ***	985 777	345	1 007 604	356	977 790	345
<b>Total</b>	<b>352 050 648</b>	<b>125 762</b>	<b>349 239 801</b>	<b>124 993</b>	<b>348 608 447</b>	<b>125 002</b>

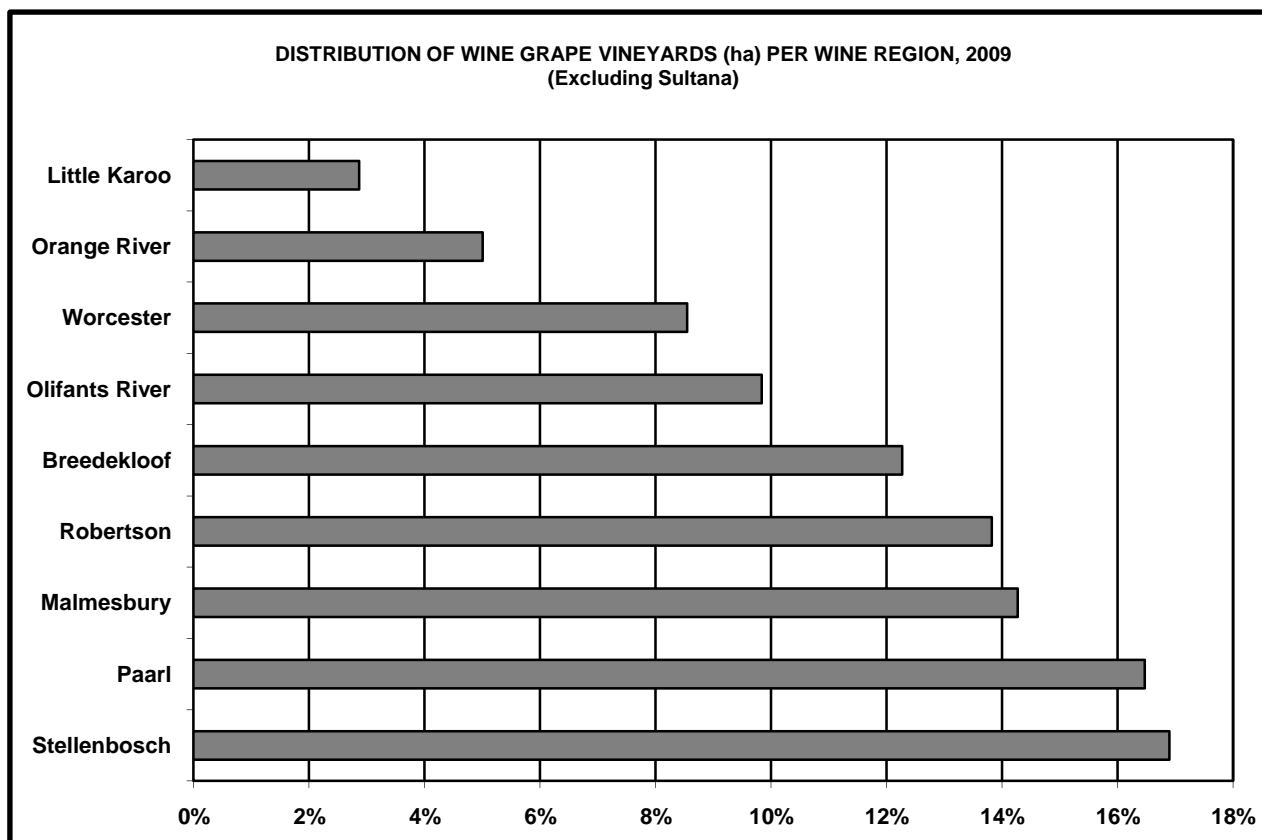
\* Includes Muscat d'Alexandrie also used as table grapes and for raisins.

\*\* Only portion of production is utilised for production of wine.

\*\*\* For raisins only.

5.2 GEOGRAPHIC DISTRIBUTION OF SOUTH AFRICAN WINE GRAPE VINEYARDS PER WINE REGION DURING 2009 (Excluding Sultana)

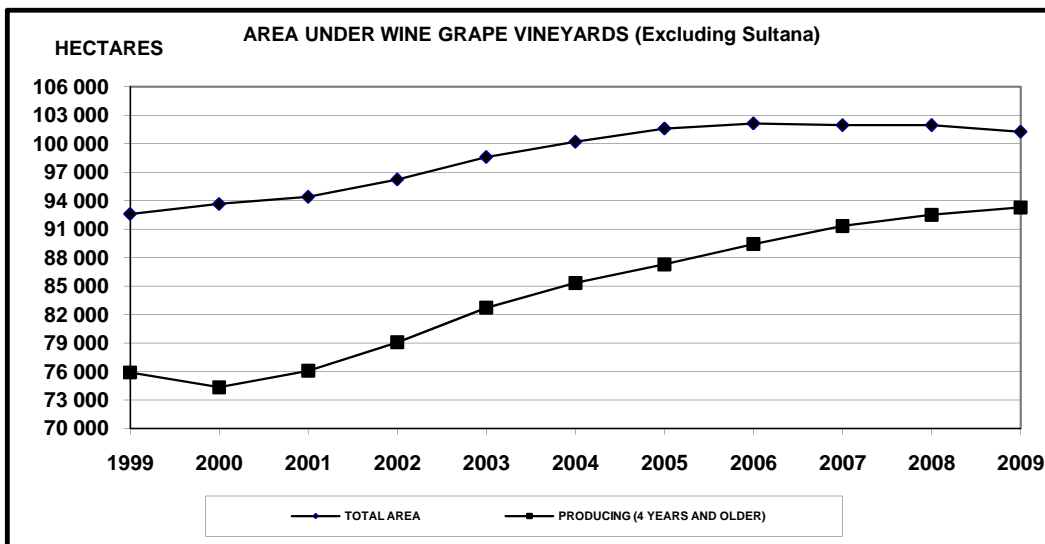
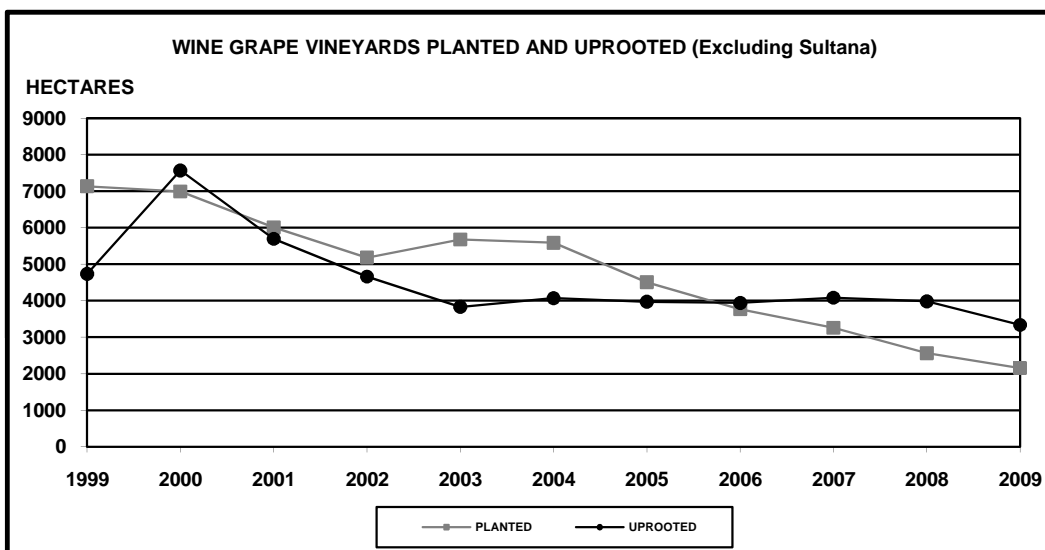
Wine regions	Number of vines	% of total vines	Area hectares	% of total hectares
Stellenbosch	52 379 699	17.24	17 117	16.90
Paarl	51 014 886	16.79	16 673	16.47
Malmesbury	36 647 519	12.06	14 448	14.27
Robertson	47 914 276	15.77	13 994	13.82
Breedekloof	40 780 860	13.42	12 427	12.27
Olifants River	27 494 587	9.05	9 964	9.84
Worcester	27 878 245	9.18	8 658	8.55
Orange River	10 732 910	3.53	5 075	5.01
Little Karoo	8 956 742	2.95	2 904	2.87
<b>Total</b>	<b>303 799 724</b>	<b>100.00</b>	<b>101 259</b>	<b>100.00</b>



5.3 TOTAL HECTARES WINE GRAPE VINEYARDS PLANTED AND UPROOTED (Excluding Sultana)

YEAR	HECTARES			TOTAL STATUS
	PLANTED	UPROOTED	* CORRECTIONS	
1999	7 132	4 732	266	92 601
2000	6 989	7 565	1 631	93 656
2001	6 004	5 693	445	94 412
2002	5 178	4 659	1 302	96 233
2003	5 676	3 828	524	98 605
2004	5 584	4 069	87	100 207
2005	4 505	3 969	864	101 607
2006	3 765	3 937	711	102 146
2007	3 257	4 081	635	101 957
2008	2 564	3 983	1 420	101 958
2009	2 154	3 335	483	101 259

\* As a result of re-counting of vines as well as plantings and uprootings of previous years which were not previously taken into account.



**5.4 WINE GRAPE VINEYARDS PLANTED PER WINE REGION DURING THE PERIOD  
1 DECEMBER 2008 TO 30 NOVEMBER 2009**

[BACK TO INDEX](#)

VARIETY PLANTED	HECTARES									
	TOTAL	ORANGE RIVER	OLIFANTS RIVER	MALMESBURY	LITTLE KAROO	PAARL	ROBERTSON	STELLENBOSCH	WORCES-TER	BREEDKLOOF
Chenin blanc	488	40	78	51	8	53	66	19	82	91
Sauvignon blanc	247	2	18	46	4	38	49	44	27	20
Colombar	294	22	57	2	10	7	61	-	39	96
Chardonnay	183	4	1	17	3	44	63	29	8	15
Viognier	13	6	4	1	1	1	1	-	-	-
Sémillon	27	-	2	4	0	3	-	5	5	9
Muscat d'Alexandrie	42	9	5	-	1	-	-	-	2	25
Other white varieties	191	59	7	21	3	9	31	36	21	5
<b>Total white varieties</b>	<b>1 486</b>	<b>141</b>	<b>172</b>	<b>143</b>	<b>30</b>	<b>155</b>	<b>270</b>	<b>132</b>	<b>183</b>	<b>260</b>
Cabernet Sauvignon	75	3	-	1	0	19	17	34	-	1
Pinotage	153	1	15	38	-	18	12	13	15	40
Shiraz	168	2	3	42	2	32	17	15	51	5
Pinot noir	75	1	-	6	3	8	24	13	13	6
Merlot	51	0	-	-	-	2	14	30	4	-
Cinsaut	3	-	-	-	-	-	-	-	2	1
Cabernet Franc	19	2	-	4	-	8	-	6	-	-
Ruby Cabernet	2	-	-	-	-	-	2	-	-	-
Roobernet	4	-	-	-	-	4	-	-	-	-
Other red varieties	119	4	10	18	7	31	26	10	11	1
<b>Total red varieties</b>	<b>668</b>	<b>14</b>	<b>28</b>	<b>107</b>	<b>12</b>	<b>123</b>	<b>112</b>	<b>122</b>	<b>97</b>	<b>54</b>
<b>Total white and red</b>	<b>2 154</b>	<b>155</b>	<b>200</b>	<b>250</b>	<b>43</b>	<b>277</b>	<b>382</b>	<b>254</b>	<b>280</b>	<b>314</b>
Sultana	74	64	3	-	-	-	-	-	4	2

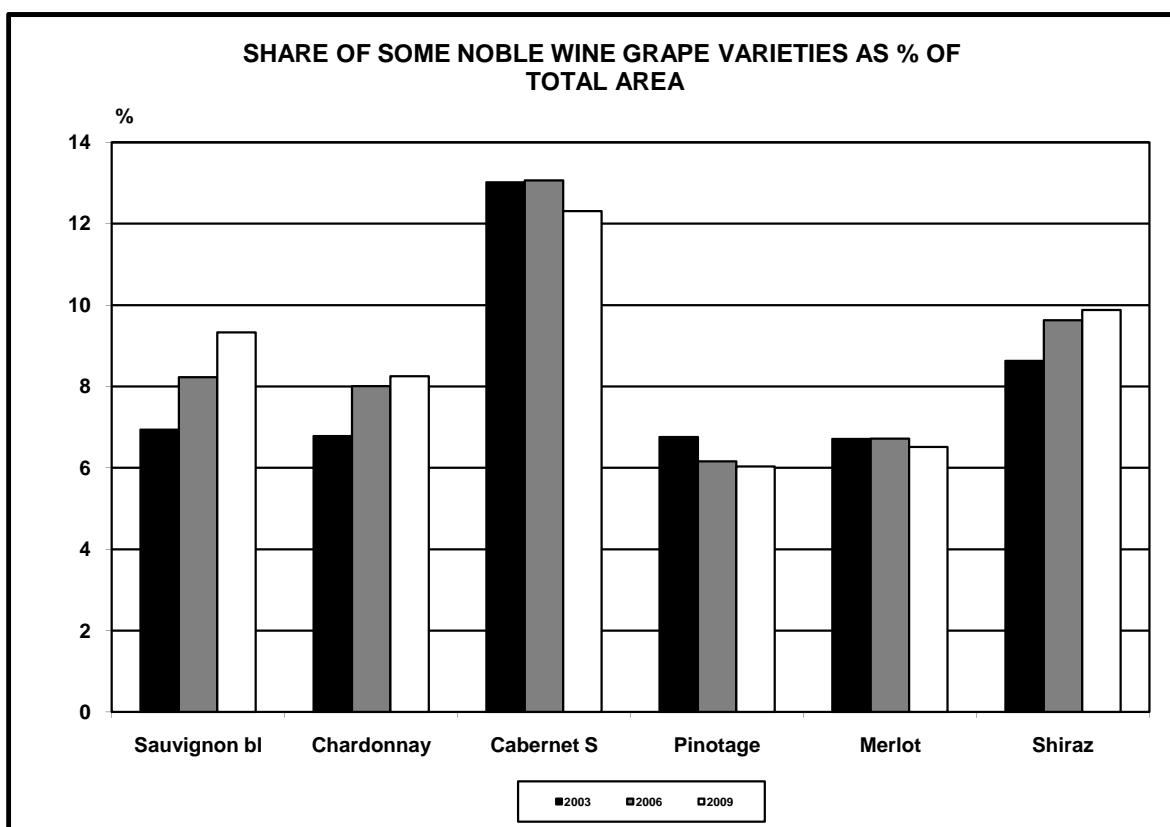
**5.5 WINE GRAPE VINEYARDS UPROOTED PER WINE REGION DURING THE PERIOD  
1 DECEMBER 2008 TO 30 NOVEMBER 2009**

VARIETY UPROOTED	HECTARES									
	TOTAL	ORANGE RIVER	OLIFANTS RIVER	MALMESBURY	LITTLE KAROO	PAARL	ROBERTSON	STELLENBOSCH	WORCES-TER	BREEDKLOOF
Chenin blanc	822	37	84	127	48	153	89	116	66	101
Colombar	383	102	51	56	42	20	42	6	44	20
Chardonnay	201	-	25	17	17	20	43	43	18	17
Sauvignon blanc	166	0	5	24	2	20	16	89	9	3
Muscat d'Alexandrie	126	28	17	2	14	8	2	5	16	35
Crouchen (Cape Riesling)	161	-	-	4	1	41	15	12	4	83
Palomino (White French)	52	12	10	8	9	-	5	-	3	5
Weisser Riesling	12	-	-	-	-	1	11	-	-	-
Sémillon	34	-	1	-	-	10	2	6	3	12
Clairette blanche	25	1	2	-	-	2	4	-	7	9
Raisin blanc	21	-	-	-	2	-	7	-	8	4
Other white varieties	123	18	12	8	10	14	41	1	10	9
<b>Total white varieties</b>	<b>2 126</b>	<b>196</b>	<b>207</b>	<b>246</b>	<b>144</b>	<b>290</b>	<b>277</b>	<b>278</b>	<b>189</b>	<b>298</b>
Cabernet Sauvignon	348	0	28	20	1	112	25	141	15	5
Pinotage	176	5	16	63	2	39	6	21	9	17
Merlot	150	-	26	14	0	41	3	48	10	7
Cinsaut	111	-	-	1	4	47	1	7	5	47
Shiraz	202	-	46	33	11	25	14	62	8	3
Other red varieties	222	10	13	29	23	61	24	36	6	20
<b>Total red varieties</b>	<b>1 209</b>	<b>15</b>	<b>128</b>	<b>159</b>	<b>41</b>	<b>325</b>	<b>74</b>	<b>315</b>	<b>53</b>	<b>99</b>
<b>Total white and red</b>	<b>3 335</b>	<b>211</b>	<b>335</b>	<b>405</b>	<b>185</b>	<b>616</b>	<b>351</b>	<b>593</b>	<b>242</b>	<b>397</b>
Sultana	567	524	14	8	1	6	4	-	8	1

Wine grape varieties as % of total area

VARIETY	2002	2003	2004	2005	2006	2007	2008	2009
Chenin blanc	20.6	19.6	19.1	18.8	18.7	18.8	18.6	18.4
Colombar	11.4	11.2	11.2	11.3	11.4	11.6	11.7	11.8
Sauvignon blanc	6.7	6.9	6.9	7.5	8.2	8.7	9.0	9.3
Chardonnay	6.4	6.8	7.3	7.8	8.0	8.1	8.2	8.3
Muscat d'Alexandrie *	3.4	3.1	2.8	2.6	2.5	2.4	2.3	2.2
Sémillon	1.0	1.0	1.0	1.1	1.1	1.1	1.1	1.2
Crouchen (Cape Riesling)	1.6	1.4	1.2	1.1	1.0	1.0	0.9	0.7
Weisser Riesling	0.4	0.3	0.3	0.3	0.2	0.2	0.2	0.2
Other white varieties	4.7	4.3	4.1	3.9	3.9	3.9	4.0	4.1
<b>Total white varieties</b>	<b>56.2</b>	<b>54.6</b>	<b>54.0</b>	<b>54.3</b>	<b>55.1</b>	<b>55.8</b>	<b>56.1</b>	<b>56.2</b>
Cabernet Sauvignon	12.4	13.0	13.5	13.4	13.1	12.8	12.5	12.3
Shiraz	8.4	8.6	9.4	9.6	9.6	9.7	9.8	9.9
Merlot	6.6	6.7	7.0	6.8	6.7	6.6	6.5	6.5
Pinotage	7.2	6.8	6.7	6.4	6.2	6.0	6.0	6.0
Ruby Cabernet	2.5	2.5	2.6	2.6	2.5	2.4	2.4	2.3
Cinsaut	3.3	3.1	3.0	2.8	2.5	2.4	2.2	2.1
Cabernet Franc	0.8	0.9	0.9	1.0	1.0	1.0	1.0	1.0
Pinot noir	0.6	0.5	0.5	0.5	0.6	0.6	0.7	0.8
Other red varieties	2.0	3.2	2.4	2.6	2.7	2.7	2.8	2.9
<b>Total red varieties</b>	<b>43.7</b>	<b>45.3</b>	<b>46.0</b>	<b>45.7</b>	<b>44.9</b>	<b>44.2</b>	<b>43.9</b>	<b>43.8</b>
<b>Total white and red</b>	<b>100.0</b>	<b>100.0</b>	<b>100.0</b>	<b>100.0</b>	<b>100.0</b>	<b>100.0</b>	<b>100.0</b>	<b>100.0</b>
<b>Total hectares</b>	<b>96 233</b>	<b>98 605</b>	<b>100 207</b>	<b>101 607</b>	<b>102 146</b>	<b>101 957</b>	<b>101 325</b>	<b>101 259</b>
<b>Sultana * (Hectares)</b>	<b>11 765</b>	<b>11 595</b>	<b>11 392</b>	<b>10 983</b>	<b>10 571</b>	<b>9 958</b>	<b>9 486</b>	<b>9 082</b>

\* Also utilised for raisins and as table grapes.



VARIETY	TOTAL HECTARES	HECTARES IN WINE AREA AS % OF VARIETY TOTAL								
		ORANGE RIVER	OLIFANTS RIVER	MALMES- BURY	LITTLE KAROO	PAARL	ROBERT- SON	STELLEN- BOSCH	WORCES- TER	BREED- KLOOF
Chenin blanc	18 668	6	14	17	3	17	9	8	11	15
Colombar	11 937	23	20	2	7	4	19	1	9	15
Chardonnay	8 349	1	6	11	3	15	27	14	10	13
Sauvignon blanc	9 446	-	6	13	1	11	17	30	11	10
Muscat d'Alexandrie	2 264	10	21	3	10	5	6	3	11	33
Crouchen (Cape Riesling)	727	1	2	7	1	26	7	8	11	37
Sémillon	1 167	-	6	11	0	15	8	16	13	32
Weisser Riesling	222	-	3	15	1	15	10	31	12	13
Other white varieties	4 123	10	9	10	4	13	25	10	11	8
<b>Total white varieties</b>	<b>56 904</b>	<b>8</b>	<b>12</b>	<b>11</b>	<b>4</b>	<b>13</b>	<b>16</b>	<b>11</b>	<b>11</b>	<b>15</b>
Cabernet Sauvignon	12 469	1	5	19	1	23	12	29	5	7
Pinotage	6 105	1	9	26	1	20	8	20	4	10
Shiraz	10 006	1	9	19	1	22	11	23	6	7
Merlot	6 588	1	7	14	2	19	10	32	6	9
Cinsaut	2 136	-	2	20	-	37	4	7	4	26
Ruby Cabernet	2 281	6	14	6	4	8	29	2	9	22
Cabernet Franc	958	-	1	10	-	20	4	48	9	7
Pinot noir	844	1	2	5	2	17	16	31	24	2
Other red varieties	2 968	1	5	23	5	21	11	20	6	8
<b>Total red varieties</b>	<b>44 356</b>	<b>1</b>	<b>7</b>	<b>18</b>	<b>2</b>	<b>21</b>	<b>11</b>	<b>24</b>	<b>6</b>	<b>9</b>
<b>Total</b>	<b>101 259</b>	<b>5</b>	<b>10</b>	<b>14</b>	<b>3</b>	<b>16</b>	<b>14</b>	<b>17</b>	<b>9</b>	<b>12</b>
<b>Sultana (Hectares)</b>	<b>9 082</b>	<b>8 309</b>	<b>182</b>	<b>203</b>	<b>32</b>	<b>94</b>	<b>30</b>	<b>0</b>	<b>226</b>	<b>5</b>

## VARIETAL COMPOSITION (%) PER WINE REGION

VARIETY	TOTAL HECTARES	ORANGE RIVER	OLIFANTS RIVER	MALMES- BURY	LITTLE KAROO	PAARL	ROBERT- SON	STELLEN- BOSCH	WORCES- TER	BREED- KLOOF
Chenin blanc	18	23	26	22	20	20	12	9	23	22
Colombar	12	54	24	2	30	3	16	-	13	14
Chardonnay	8	1	5	7	8	8	16	7	10	8
Sauvignon blanc	9	-	6	9	4	6	11	17	12	8
Muscat d'Alexandrie	2	4	5	-	8	1	1	-	3	6
Crouchen (Cape Riesling)	1	-	-	-	-	1	-	-	1	2
Sémillon	1	-	1	1	-	1	1	1	2	3
Weisser Riesling	-	-	-	-	-	-	-	-	-	-
Other white varieties	4	8	4	3	6	3	7	2	5	3
<b>Total white varieties</b>	<b>56</b>	<b>91</b>	<b>69</b>	<b>44</b>	<b>75</b>	<b>43</b>	<b>65</b>	<b>37</b>	<b>69</b>	<b>67</b>
Cabernet Sauvignon	12	2	6	16	4	17	10	21	7	7
Pinotage	6	1	6	11	3	7	3	7	3	5
Shiraz	10	1	9	13	5	13	8	13	7	6
Merlot	7	1	5	6	4	7	5	12	5	5
Cinsaut	2	-	-	3	-	5	1	1	1	5
Ruby Cabernet	2	3	3	1	3	1	5	-	2	4
Cabernet Franc	1	-	-	1	-	1	-	3	1	1
Pinot noir	1	-	-	-	1	1	1	2	2	-
Other red varieties	3	1	1	5	5	4	2	3	2	2
<b>Total red varieties</b>	<b>44</b>	<b>9</b>	<b>31</b>	<b>56</b>	<b>25</b>	<b>57</b>	<b>35</b>	<b>63</b>	<b>31</b>	<b>33</b>
<b>Total</b>	<b>100</b>	<b>100</b>	<b>100</b>	<b>100</b>	<b>100</b>	<b>100</b>	<b>100</b>	<b>100</b>	<b>100</b>	<b>100</b>
<b>Total hectares</b>	<b>101 259</b>	<b>5 075</b>	<b>9 964</b>	<b>14 448</b>	<b>2 904</b>	<b>16 673</b>	<b>13 994</b>	<b>17 117</b>	<b>8 658</b>	<b>12 427</b>
<b>Sultana (Hectares)</b>	<b>9 082</b>	<b>8 309</b>	<b>182</b>	<b>203</b>	<b>32</b>	<b>94</b>	<b>30</b>	<b>0</b>	<b>226</b>	<b>5</b>

**5.8 AGE OF VINES PER WINE REGION FOR 2009 - HECTARES (Excluding Sultana)**
[BACK TO INDEX](#)

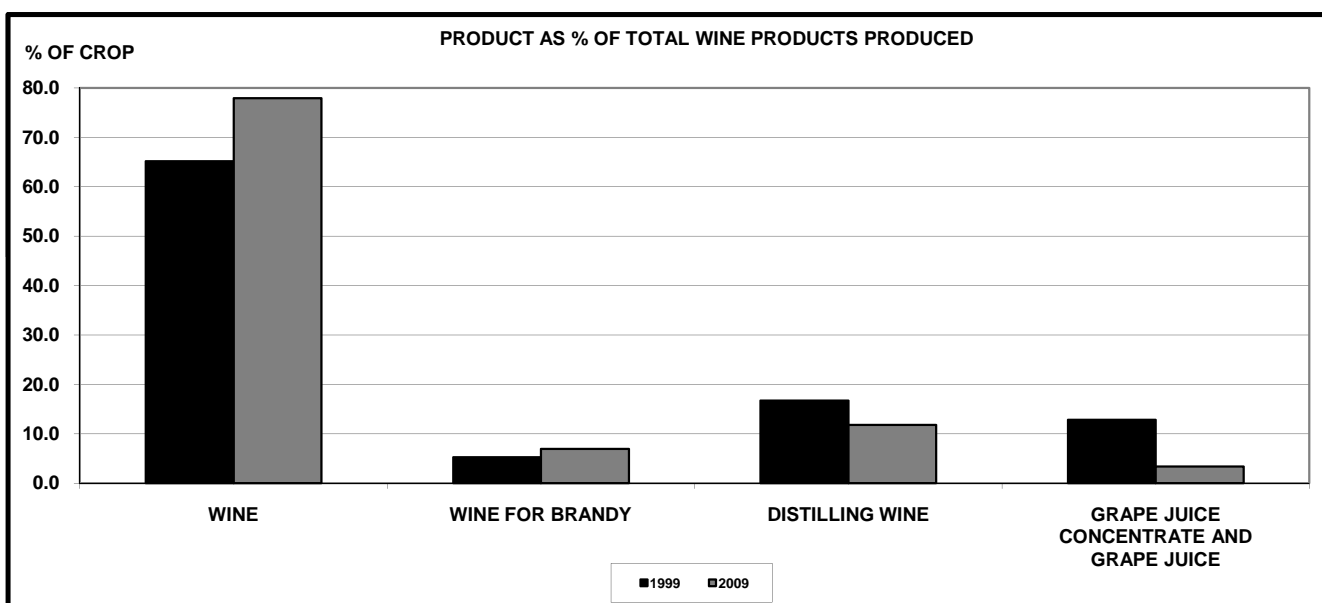
AGE OF VINES	HECTARES									
	TOTAL HECTARES	ORANGE RIVER	OLIFANTS RIVER	MALMESBURY	LITTLE KAROO	PAARL	ROBERTSON	STELLENBOSCH	WORCES-TER	BREED-KLOOF
< 4 Years	5 972	441	678	422	226	583	1 070	668	880	1 004
4 - 10 Years	15 916	1 131	1 849	1 722	549	1 806	2 725	1 866	2 042	2 227
11 - 15 Years	10 936	1 825	1 375	1 013	470	1 054	1 810	893	1 016	1 481
16 - 20 Years	8 444	470	1 424	763	349	822	1 586	673	874	1 482
> 20 Years	15 635	734	1 590	2 393	579	2 889	1 912	2 270	1 190	2 079
<b>Total white varieties</b>	<b>56 904</b>	<b>4 601</b>	<b>6 916</b>	<b>6 313</b>	<b>2 173</b>	<b>7 154</b>	<b>9 104</b>	<b>6 370</b>	<b>6 001</b>	<b>8 273</b>
< 4 Years	2 002	23	77	241	45	400	290	502	251	174
4 - 10 Years	21 560	185	1 422	3 740	384	4 850	2 316	5 209	1 416	2 038
11 - 15 Years	14 556	204	1 328	3 031	214	2 842	1 795	2 873	745	1 525
16 - 20 Years	3 702	34	128	608	30	812	346	1 248	213	283
> 20 Years	2 535	29	94	514	59	614	143	916	33	133
<b>Total red varieties</b>	<b>44 356</b>	<b>474</b>	<b>3 048</b>	<b>8 135</b>	<b>731</b>	<b>9 518</b>	<b>4 890</b>	<b>10 747</b>	<b>2 658</b>	<b>4 154</b>
< 4 Years	7 974	464	755	663	271	984	1 360	1 170	1 130	1 178
4 - 10 Years	37 476	1 316	3 270	5 462	932	6 656	5 041	7 075	3 457	4 265
11 - 15 Years	25 492	2 028	2 703	4 045	684	3 895	3 605	3 766	1 761	3 006
16 - 20 Years	12 146	504	1 552	1 371	379	1 634	1 932	1 921	1 087	1 766
> 20 Years	18 170	762	1 684	2 907	638	3 503	2 055	3 185	1 223	2 213
<b>Total white and red</b>	<b>101 259</b>	<b>5 075</b>	<b>9 964</b>	<b>14 448</b>	<b>2 904</b>	<b>16 673</b>	<b>13 994</b>	<b>17 117</b>	<b>8 658</b>	<b>12 427</b>

**AGE OF VINES PER WINE REGION FOR 2009 - % (Excluding Sultana)**

AGE OF VINES	HECTARES IN WINE REGION AS % OF TOTAL									
	TOTAL HECTARES	ORANGE RIVER	OLIFANTS RIVER	MALMESBURY	LITTLE KAROO	PAARL	ROBERTSON	STELLENBOSCH	WORCES-TER	BREED-KLOOF
< 4 Years	5.9	8.7	6.8	2.9	7.8	3.5	7.6	3.9	10.2	8.1
4 - 10 Years	15.7	22.3	18.6	11.9	18.9	10.8	19.5	10.9	23.6	17.9
11 - 15 Years	10.8	36.0	13.8	7.0	16.2	6.3	12.9	5.2	11.7	11.9
16 - 20 Years	8.3	9.3	14.3	5.3	12.0	4.9	11.3	3.9	10.1	11.9
> 20 Years	15.4	14.5	16.0	16.6	19.9	17.3	13.7	13.3	13.7	16.7
<b>Total white varieties</b>	<b>56.2</b>	<b>90.7</b>	<b>69.4</b>	<b>43.7</b>	<b>74.8</b>	<b>42.9</b>	<b>65.1</b>	<b>37.2</b>	<b>69.3</b>	<b>66.6</b>
< 4 Years	2.0	0.5	0.8	1.7	1.5	2.4	2.1	2.9	2.9	1.4
4 - 10 Years	21.3	3.6	14.3	25.9	13.2	29.1	16.6	30.4	16.4	16.4
11 - 15 Years	14.4	4.0	13.3	21.0	7.4	17.0	12.8	16.8	8.6	12.3
16 - 20 Years	3.7	0.7	1.3	4.2	1.0	4.9	2.5	7.3	2.5	2.3
> 20 Years	2.5	0.6	0.9	3.6	2.0	3.7	1.0	5.3	0.4	1.1
<b>Total red varieties</b>	<b>43.8</b>	<b>9.3</b>	<b>30.6</b>	<b>56.3</b>	<b>25.2</b>	<b>57.1</b>	<b>34.9</b>	<b>62.8</b>	<b>30.7</b>	<b>33.4</b>
< 4 Years	7.9	9.1	7.6	4.6	9.3	5.9	9.7	6.8	13.1	9.5
4 - 10 Years	37.0	25.9	32.8	37.8	32.1	39.9	36.0	41.3	39.9	34.3
11 - 15 Years	25.2	40.0	27.1	28.0	23.5	23.4	25.8	22.0	20.3	24.2
16 - 20 Years	12.0	9.9	15.6	9.5	13.0	9.8	13.8	11.2	12.6	14.2
> 20 Years	17.9	15.0	16.9	20.1	22.0	21.0	14.7	18.6	14.1	17.8
<b>Total white and red</b>	<b>100.0</b>	<b>100.0</b>	<b>100.0</b>	<b>100.0</b>	<b>100.0</b>	<b>100.0</b>	<b>100.0</b>	<b>100.0</b>	<b>100.0</b>	<b>100.0</b>

6.1 TOTAL CROP

YEAR	GRAPE PRODUCTION TONS	WINE PRODUCTS - GROSS LITRE							
		WINE	WINE FOR BRANDY	AVERAGE % ALC/VOL	DISTILLING WINE	AVERAGE % ALC/VOL	GRAPE JUICE CONCENTRATE AND GRAPE JUICE	AVERAGE % ALC/VOL	TOTAL WINE CROP
1996	1 148 114	576 663 976	126 060 326	10.73	142 347 061	9.56	54 261 522	11.34	899 332 885
1997	1 120 602	546 688 605	142 354 553	11.11	122 413 493	9.66	69 458 508	11.25	880 915 159
1998	1 041 004	544 387 811	107 515 284	11.49	118 348 265	9.75	45 324 129	11.81	815 575 489
1999	1 173 596	595 907 559	47 972 702	11.52	152 961 143	10.04	117 254 086	11.26	914 095 490
2000	1 098 170	540 233 265	24 825 560	11.46	129 857 983	9.98	142 292 995	10.99	837 209 803
2001	977 461	530 399 518	8 130 916	11.67	108 546 970	10.09	99 407 830	12.04	746 485 234
2002	1 079 875	567 239 847	26 797 303	11.80	124 794 222	10.02	115 324 822	11.65	834 156 194
2003	1 233 689	712 660 742	50 453 126	11.75	122 209 343	9.93	70 692 300	11.71	956 015 511
2004	1 312 184	696 788 280	85 357 180	11.66	145 774 848	9.94	87 776 683	11.54	1 015 696 991
2005	1 171 632	628 482 614	82 927 858	11.84	129 238 525	9.96	64 577 593	11.70	905 226 590
2006	1 301 579	709 717 222	82 116 414	11.48	147 945 171	10.00	73 201 381	10.61	1 012 980 188
2007	1 351 447	730 420 212	101 487 106	11.31	146 361 237	9.96	65 190 234	11.57	1 043 458 789
2008	1 425 612	763 346 054	86 580 058	11.15	166 558 133	9.69	72 530 790	10.66	1 089 015 035
2009	1 347 620	805 111 420	71 424 165	11.49	122 123 936	9.82	34 759 776	11.04	1 033 419 297



6.2 DISTRIBUTION OF PRODUCTION BETWEEN RED AND WHITE

YEAR	WINE GRAPES UTILISED FOR TOTAL WINE MAKING PURPOSES		WINE PRODUCED	
	% Red	% White	% Red	% White
1999	13.4	86.6	16.3	83.7
2000	15.0	85.0	21.0	79.0
2001	21.1	78.9	25.2	74.8
2002	22.7	77.3	27.9	72.1
2003	28.1	71.9	32.1	67.9
2004	29.9	70.1	36.2	63.8
2005	33.5	66.5	38.9	61.1
2006	33.4	66.6	36.5	63.5
2007	34.4	65.6	36.1	63.9
2008	33.9	66.1	37.6	62.4
2009	33.1	66.9	35.2	64.8

6.3 VARIETIES UTILISED FOR TOTAL WINE MAKING PURPOSES DURING 2009

VARIETY	TOTAL TONS	% OF VARIETY CRUSHED BY		
		PRIVATE WINE CELLARS	PRODUCER CELLARS	PRODUCING WHOLESALERS
Chenin blanc	282 206	9.4	88.1	2.5
Colombar	273 439	4.2	95.6	0.2
Muscat d'Alexandrie	43 151	8.9	89.7	1.3
Sauvignon blanc	84 646	31.8	51.6	16.6
Crouchen (Cape Riesling)	9 393	13.4	81.0	5.5
Chardonnay	87 138	21.4	69.1	9.4
Weisser Riesling	1 616	37.2	54.5	8.4
Sémillon	16 063	20.6	67.8	11.6
Other white varieties	67 282	19.0	77.6	3.4
Table grapes	33 661	18.9	81.1	-
<b>Total white varieties</b>	<b>898 594</b>	<b>12.4</b>	<b>83.6</b>	<b>3.9</b>
Cabernet Sauvignon	93 852	25.2	54.0	20.8
Cinsaut	26 164	9.3	85.9	4.7
Pinotage	64 508	18.9	70.1	11.0
Merlot	70 781	27.8	54.4	17.7
Shiraz	99 187	26.2	58.0	15.8
Ruby Cabernet	34 327	7.7	90.8	1.5
Cabernet Franc	8 751	35.9	42.3	21.7
Pinot noir	5 010	53.5	7.9	38.6
Other red varieties	25 069	41.6	45.1	13.4
Table grapes	21 377	3.1	96.9	-
<b>Total red varieties</b>	<b>449 027</b>	<b>23.1</b>	<b>62.7</b>	<b>14.2</b>
<b>Total white and red</b>	<b>1 347 620</b>	<b>16.0</b>	<b>76.7</b>	<b>7.3</b>

VARIETY AS % OF TOTAL CRUSHED

VARIETY	ALL WINE CELLARS	PRIVATE WINE CELLARS	PRODUCER CELLARS	PRODUCING WHOLESALERS
Chenin blanc	20.9	12.3	24.1	7.2
Colombar(d)	20.3	5.4	25.3	0.4
Muscat d'Alexandrie	3.2	1.8	3.7	0.6
Sauvignon blanc	6.3	12.5	4.2	14.2
Cape Riesling	0.7	0.6	0.7	0.5
Chardonnay	6.5	8.7	5.8	8.3
Weisser Riesling	0.1	0.3	0.1	0.1
Sémillon	1.2	1.5	1.1	1.9
Other white varieties	5.0	5.9	5.1	2.3
Table grapes	2.5	3.0	2.6	-
<b>Total white varieties</b>	<b>66.7</b>	<b>51.9</b>	<b>72.7</b>	<b>35.6</b>
Cabernet Sauvignon	7.0	11.0	4.9	19.7
Cinsaut	1.9	1.1	2.2	1.3
Pinotage	4.8	5.7	4.4	7.2
Merlot	5.3	9.1	3.7	12.7
Shiraz	7.4	12.1	5.6	15.8
Ruby Cabernet	2.5	1.2	3.0	0.5
Cabernet Franc	0.6	1.5	0.4	1.9
Pinot noir	0.4	1.2	-	2.0
Other red varieties	1.9	4.8	1.1	3.4
Table grapes	1.6	0.3	2.0	-
<b>Total red varieties</b>	<b>33.3</b>	<b>48.1</b>	<b>27.3</b>	<b>64.4</b>
<b>Total white and red</b>	<b>100.0</b>	<b>100.0</b>	<b>100.0</b>	<b>100.0</b>
<b>Total tons</b>	<b>1 347 620</b>	<b>215 372</b>	<b>1 033 230</b>	<b>99 018</b>

**6.4 GRAPE PRODUCTION FOR TOTAL WINE MAKING PURPOSES PER WINE REGION**

VARIETY	TOTAL TONS	WINE REGION AS % OF VARIETAL TOTAL								
		ORANGE RIVER	OLIFANTS RIVER	MALMES-BURY	LITTLE KAROO	PAARL	ROBERT-SON	STELLEN-BOSCH	WORCES-TER	BREEDE-KLOOF
Chenin blanc	282 206	8.4	22.3	10.0	3.3	10.2	10.7	4.4	10.8	19.9
Colombar	273 439	23.4	26.4	1.2	6.6	2.4	16.5	0.2	8.8	14.5
Muscat d'Alexandrie	43 151	7.4	30.3	1.0	6.3	1.9	4.5	0.2	14.3	34.1
Sauvignon blanc	84 646	0.1	9.5	9.0	0.5	9.2	23.3	20.9	11.3	16.2
Crouchen (Cape Riesling)	9 393	0.8	1.2	1.6	0.8	15.1	5.8	3.8	13.7	57.1
Chardonnay	87 138	0.4	8.0	7.8	2.5	11.4	33.1	8.2	12.9	15.6
Weisser Riesling	1 616	-	3.1	14.4	0.9	23.2	19.1	15.3	3.7	20.4
Sémillon	16 063	-	7.0	5.8	0.1	9.4	7.1	9.1	19.7	41.7
Other white varieties	67 282	12.4	10.3	12.0	3.3	7.8	25.2	5.2	15.9	8.0
Table grapes	33 661	36.2	2.9	16.7	1.5	7.7	0.6	0.1	33.6	0.7
<b>Total white varieties</b>	<b>898 594</b>	<b>12.4</b>	<b>19.2</b>	<b>6.9</b>	<b>3.9</b>	<b>7.3</b>	<b>16.1</b>	<b>4.9</b>	<b>12.0</b>	<b>17.3</b>
Cabernet Sauvignon	93 852	0.5	6.2	15.6	0.8	21.2	14.8	23.6	6.6	10.6
Cinsaut	26 164	-	1.0	8.2	0.1	27.2	5.0	4.8	7.8	45.8
Pinotage	64 508	0.5	13.2	20.5	1.7	16.4	11.0	15.4	8.0	13.4
Merlot	70 781	0.5	8.8	11.6	1.8	16.7	12.3	27.4	6.8	14.1
Shiraz	99 187	0.6	11.5	14.9	1.6	19.7	13.3	20.1	5.9	12.4
Ruby Cabernet	34 327	5.0	15.4	3.5	5.0	6.1	28.3	1.2	10.8	24.8
Cabernet Franc	8 751	0.0	1.8	5.2	0.0	16.9	4.9	35.0	26.6	9.6
Pinot noir	5 010	0.1	4.0	5.3	1.3	23.0	18.6	31.6	12.3	3.8
Other red varieties	25 069	1.4	4.2	19.1	6.0	18.7	15.2	14.3	9.1	12.0
Table grapes	21 377	0.5	4.0	3.4	1.7	15.1	0.7	0.1	72.3	2.2
<b>Total red varieties</b>	<b>449 027</b>	<b>0.9</b>	<b>8.9</b>	<b>13.5</b>	<b>1.9</b>	<b>18.2</b>	<b>13.2</b>	<b>18.1</b>	<b>10.8</b>	<b>14.7</b>
<b>Total white and red</b>	<b>1 347 620</b>	<b>8.6</b>	<b>15.7</b>	<b>9.1</b>	<b>3.2</b>	<b>10.9</b>	<b>15.2</b>	<b>9.3</b>	<b>11.6</b>	<b>16.4</b>

**VARIETIES PRODUCED IN WINE REGION AS % OF TOTAL PRODUCTION OF REGION**

VARIETY	ORANGE RIVER	OLIFANTS RIVER	MALMES-BURY	LITTLE KAROO	PAARL	ROBERT-SON	STELLEN-BOSCH	WORCES-TER	BREEDE-KLOOF
Chenin blanc	20.6	29.6	23.2	21.0	19.7	14.8	10.0	19.5	25.3
Colombar	55.2	34.0	2.7	41.2	4.5	22.1	0.5	15.3	17.9
Muscat d'Alexandrie	2.8	6.2	0.3	6.2	0.6	0.9	0.1	3.9	6.6
Sauvignon blanc	0.0	3.8	6.2	1.0	5.3	9.7	14.2	6.1	6.2
Crouchen (Cape Riesling)	0.1	0.1	0.1	0.2	1.0	0.3	0.3	0.8	2.4
Chardonnay	0.3	3.3	5.6	4.9	6.8	14.1	5.7	7.2	6.2
Weisser Riesling	-	0.0	0.2	0.0	0.3	0.2	0.2	0.0	0.1
Sémillon	-	0.5	0.8	0.0	1.0	0.6	1.2	2.0	3.0
Other white varieties	7.2	3.3	6.6	5.0	3.6	8.3	2.8	6.8	2.4
Table grapes	10.5	0.5	4.6	1.2	1.8	0.1	0.0	7.2	0.1
<b>Total white varieties</b>	<b>96.7</b>	<b>81.3</b>	<b>50.5</b>	<b>80.9</b>	<b>44.4</b>	<b>71.0</b>	<b>34.9</b>	<b>69.0</b>	<b>70.3</b>
Cabernet Sauvignon	0.4	2.7	12.0	1.8	13.6	6.8	17.7	4.0	4.5
Cinsaut	-	0.1	1.8	0.1	4.8	0.6	1.0	1.3	5.4
Pinotage	0.3	4.0	10.8	2.4	7.2	3.5	8.0	3.3	3.9
Merlot	0.3	2.9	6.7	2.9	8.1	4.3	15.5	3.1	4.5
Shiraz	0.5	5.4	12.1	3.6	13.3	6.5	15.9	3.7	5.5
Ruby Cabernet	1.5	2.5	1.0	3.9	1.4	4.8	0.3	2.4	3.8
Cabernet Franc	0.0	0.1	0.4	0.0	1.0	0.2	2.4	1.5	0.4
Pinot noir	0.0	0.1	0.2	0.2	0.8	0.5	1.3	0.4	0.1
Other red varieties	0.3	0.5	3.9	3.4	3.2	1.9	2.9	1.5	1.4
Table grapes	0.1	0.4	0.6	0.8	2.2	0.1	0.0	9.9	0.2
<b>Total red varieties</b>	<b>3.3</b>	<b>18.7</b>	<b>49.5</b>	<b>19.1</b>	<b>55.6</b>	<b>29.0</b>	<b>65.1</b>	<b>31.0</b>	<b>29.7</b>
<b>Total white and red</b>	<b>100.0</b>	<b>100.0</b>	<b>100.0</b>	<b>100.0</b>	<b>100.0</b>	<b>100.0</b>	<b>100.0</b>	<b>100.0</b>	<b>100.0</b>
<b>Total tons</b>	<b>115 688</b>	<b>212 172</b>	<b>122 123</b>	<b>43 664</b>	<b>146 722</b>	<b>204 271</b>	<b>125 006</b>	<b>156 351</b>	<b>221 623</b>

## 6.5 CERTIFIED WINE

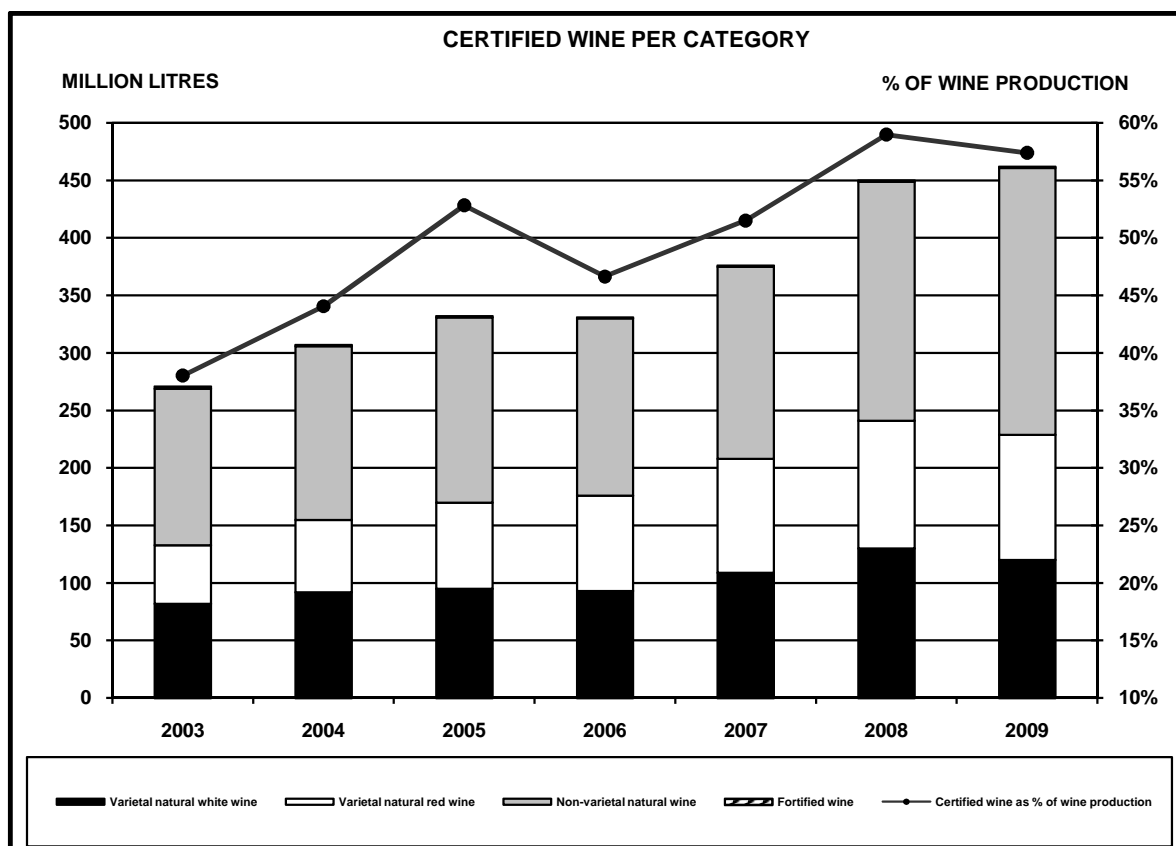
Wines of Origin are made under strict control, from the harvesting of the grapes to the final product, in order to comply with the requirements of the Wine of Origin Scheme with respect to origin, variety and vintage.

The certification seal on the bottle confirms that at the time of its assessment by the Wine and Spirit Board, the wine conformed to the prescribed standards and confirms claims with regard to origin, variety and vintage as indicated on the label.

### CERTIFIED WINE

WINE CATEGORY	LITRES						
	2003	2004	2005	2006	2007	2008	2009
<b>White varieties:</b>							
Natural wine *	82 149 335	92 173 841	94 520 499	92 708 009	109 074 251	130 011 675	119 715 331
Fortified wine	579 977	301 514	304 719	311 841	309 753	315 434	456 928
<b>Total</b>	<b>82 729 312</b>	<b>92 475 355</b>	<b>94 825 218</b>	<b>93 019 850</b>	<b>109 384 004</b>	<b>130 327 109</b>	<b>120 172 259</b>
<b>Red varieties:</b>							
Natural wine *	51 024 592	62 867 210	75 305 037	83 052 503	98 477 970	111 097 722	108 847 530
Fortified wine	27 898	342 779	297 818	278 264	302 885	304 170	19 760
<b>Total</b>	<b>51 052 490</b>	<b>63 209 989</b>	<b>75 602 855</b>	<b>83 330 767</b>	<b>98 780 855</b>	<b>111 401 892</b>	<b>108 867 290</b>
<b>Non varietal:</b>							
Natural wine *	136 348 036	151 056 339	161 326 032	153 900 799	167 220 856	207 461 808	231 937 683
Fortified wine	870 057	684 711	749 859	630 074	715 146	874 529	854 984
<b>Total</b>	<b>137 218 093</b>	<b>151 741 050</b>	<b>162 075 891</b>	<b>154 530 873</b>	<b>167 936 002</b>	<b>208 336 337</b>	<b>232 792 667</b>
<b>Total:</b>							
Natural wine *	269 521 963	306 097 390	331 151 568	329 661 311	374 773 077	448 571 205	460 500 544
Fortified wine	1 477 932	1 329 004	1 352 396	1 220 179	1 327 784	1 494 133	1 331 672
<b>GRAND TOTAL</b>	<b>270 999 895</b>	<b>307 426 394</b>	<b>332 503 964</b>	<b>330 881 490</b>	<b>376 100 861</b>	<b>450 065 338</b>	<b>461 832 216</b>

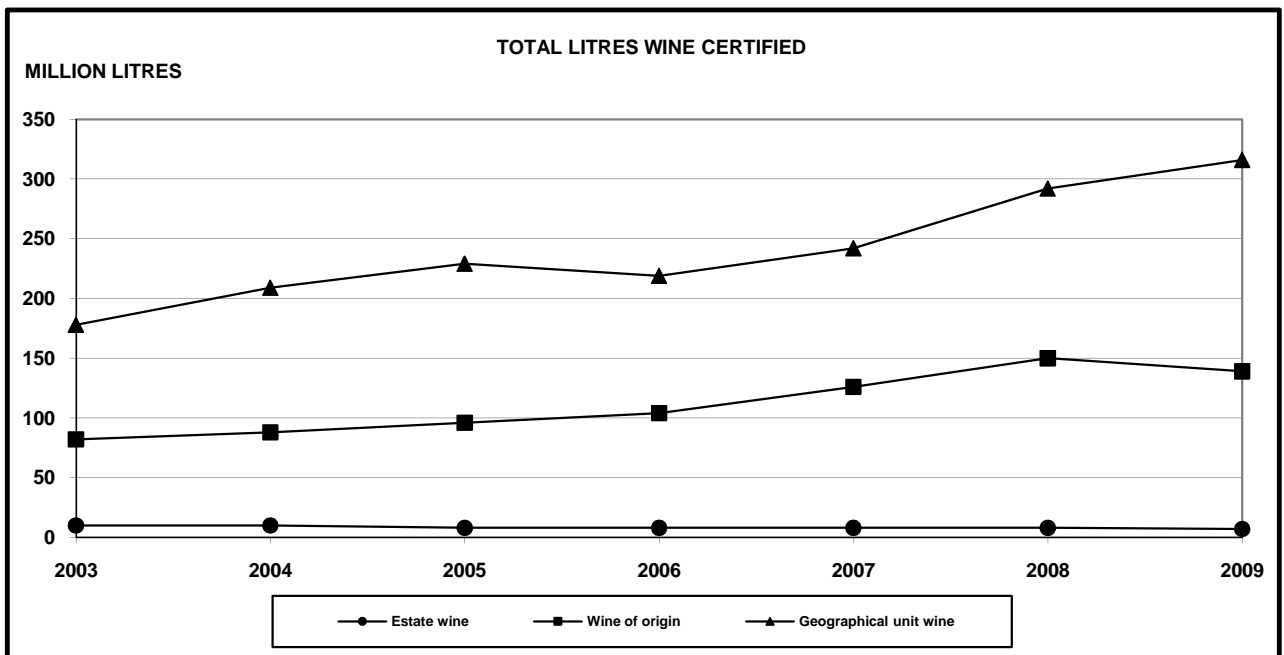
\* Includes sparkling wine.



**6.6 CERTIFIED WINE PER PRODUCER GROUP**  
(Quantity final certified wine irrespective of vintage)

	LITRES						
	2003	2004	2005	2006	2007	2008	2009
<b>PRODUCER CELLARS</b>							
Estate wine	-	-	-	-	-	-	-
Wine of origin	30 888 044	36 628 361	36 015 947	39 845 500	59 145 332	63 583 771	57 157 264
Geographical unit wine	20 308 705	22 515 627	26 407 538	32 512 032	33 589 677	39 060 902	47 334 414
<b>Sub total</b>	<b>51 196 749</b>	<b>59 143 988</b>	<b>62 423 485</b>	<b>72 357 532</b>	<b>92 735 009</b>	<b>102 644 673</b>	<b>104 491 678</b>
<b>WHOLESALERS</b>							
Estate wine	-	-	-	-	-	-	-
Wine of origin	26 488 154	23 627 119	28 517 282	30 881 762	31 291 097	47 110 254	43 748 372
Geographical unit wine	148 215 602	176 294 488	187 724 332	171 517 507	189 599 629	224 258 023	239 875 291
<b>Sub total</b>	<b>174 703 756</b>	<b>199 921 607</b>	<b>216 241 614</b>	<b>202 399 269</b>	<b>220 890 726</b>	<b>271 368 277</b>	<b>283 623 663</b>
<b>OTHER</b>							
Estate wine	10 237 928	9 746 030	7 912 707	8 140 595	7 697 164	8 118 577	6 660 051
Wine of origin	25 109 115	28 011 566	30 989 483	32 865 635	35 809 281	39 251 654	38 357 645
Geographical unit wine	9 752 347	10 603 202	14 936 675	15 118 459	18 968 681	28 682 157	28 699 179
<b>Sub total</b>	<b>45 099 390</b>	<b>48 360 798</b>	<b>53 838 865</b>	<b>56 124 689</b>	<b>62 475 126</b>	<b>76 052 388</b>	<b>73 716 875</b>
<b>TOTAL</b>							
Estate wine	10 237 928	9 746 030	7 912 707	8 140 595	7 697 164	8 118 577	6 660 051
Wine of origin	82 485 313	88 267 046	95 522 712	103 592 897	126 245 710	149 945 679	139 263 281
Geographical unit wine	178 276 654	209 413 317	229 068 545	219 147 998	242 157 987	292 001 082	315 908 884
<b>GRAND TOTAL</b>	<b>270 999 895</b>	<b>307 426 393</b>	<b>332 503 964</b>	<b>330 881 490</b>	<b>376 100 861</b>	<b>450 065 338</b>	<b>461 832 216</b>

Certified bulk exports (Included in above figures)	65 325 574	76 303 525	100 187 008	105 247 607	131 833 645	165 696 877	172 194 803
---	------------	------------	-------------	-------------	-------------	-------------	-------------



## 7.1 PRODUCERS' SALES AND INCOME

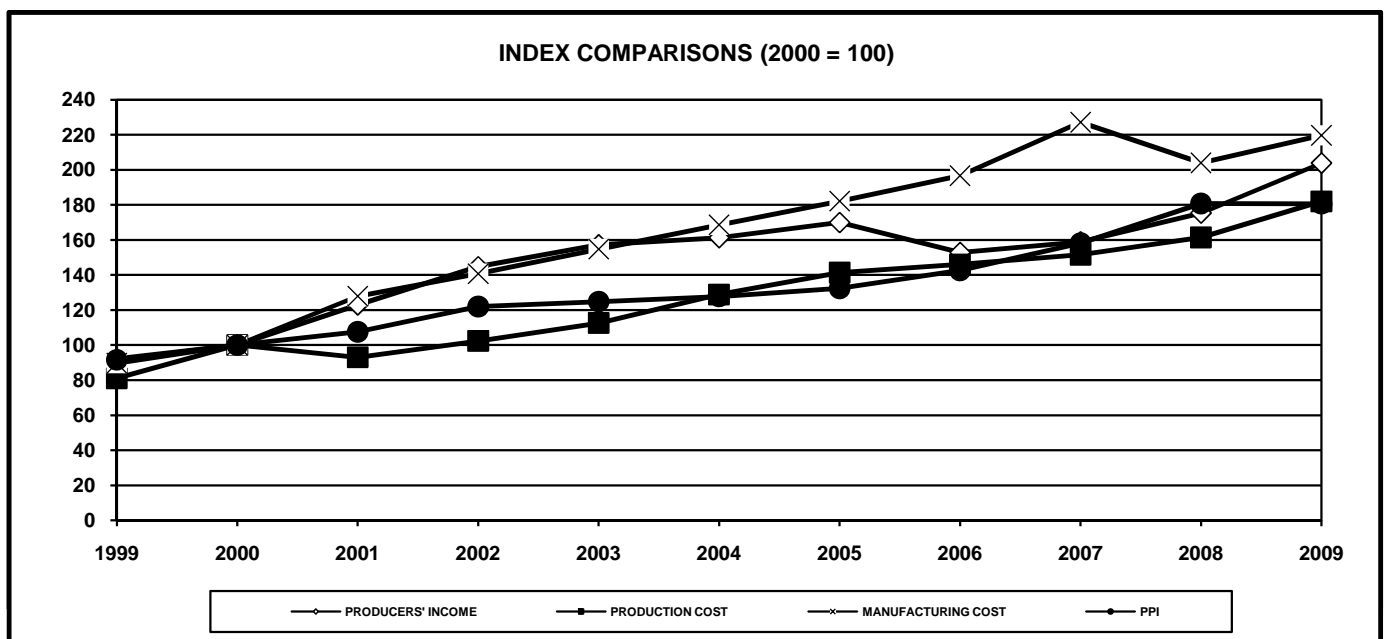
YEAR	GRAPES SOLD TO PRODUCING WHOLESALERS		WINE		WINE FOR BRANDY		DISTILLING WINE, GRAPE JUICE CONCENTRATE AND GRAPE JUICE		TOTAL
	TONS	RAND	LITRES	RAND	ℓ @ 10% A/V	RAND	ℓ @ 10% A/V	RAND	RAND
1999	45 279	123 472 472	471 105 809	1 004 195 539	54 941 316	70 397 682	290 489 463	237 846 453	1 435 912 146
2000	53 987	165 425 296	492 575 675	1 030 746 206	28 210 791	34 016 372	309 810 051	227 947 194	1 458 135 068
2001	71 715	236 106 766	513 672 746	1 171 561 209	9 236 353	11 093 043	241 108 736	176 985 509	1 595 746 527
2002	60 120	218 990 810	540 091 994	1 594 078 218	31 559 621	41 722 410	262 381 121	220 658 752	2 075 450 190
2003	95 372	340 764 760	502 793 958	1 881 905 992	59 154 324	110 411 993	223 980 859	243 018 049	2 576 100 794
2004	92 460	343 618 314	570 565 631	1 996 274 451	99 264 395	197 857 740	246 317 617	272 898 703	2 810 649 208
2005	93 814	306 095 814	567 278 434	1 900 518 439	97 797 034	203 811 278	208 986 908	233 386 619	2 643 812 150
2006	98 091	299 182 965	562 987 631	1 889 651 444	94 173 506	199 321 001	237 558 834	253 958 427	2 642 113 837
2007	95 544	265 729 665	613 508 539	2 047 610 379	114 086 136	254 896 789	232 456 540	284 306 256	2 852 543 089
2008	100 831	293 681 016	739 095 733	2 509 260 784	96 674 127	219 058 211	251 395 395	297 899 003	3 319 899 014
2009	99 018	354 501 451	704 942 300	2 706 493 357	79 998 895	355 372 735	174 630 831	232 535 653	3 648 903 196

YEAR	TOTAL GRAPE PRODUCTION	TOTAL PRODUCERS' INCOME	AVERAGE INCOME		*WEIGHTED AVERAGE PRODUCTION COST		**AVERAGE MANUFACTURING COST		PPI
	TONS	RAND	R/ton	INDEX	R/ha	INDEX	R/ton	INDEX	INDEX
1999	1 173 596	1 435 912 146	1 223.51	92.1	11 833.00	81.0	537.00	89.6	91.6
2000	1 098 170	1 458 135 068	1 327.79	100.0	14 604.00	100.0	599.00	100.0	100.0
2001	977 461	1 595 746 527	1 632.54	123.0	13 588.00	93.0	766.00	127.9	107.6
2002	1 079 875	2 075 450 190	1 921.94	144.7	14 946.00	102.3	843.00	140.7	122.0
2003	1 233 689	2 576 100 794	2 088.13	157.3	16 440.00	112.6	927.00	154.8	124.8
2004	1 312 184	2 810 649 208	2 141.96	161.3	18 821.00	128.9	1 010.00	168.6	127.7
2005	1 171 632	2 643 812 150	2 256.52	169.9	20 643.00	141.4	1 091.00	182.1	132.4
2006	1 301 579	2 642 113 837	2 029.93	152.9	21 332.00	146.1	1 178.00	196.7	142.6
2007	1 351 447	2 852 543 089	2 110.73	159.0	22 125.00	151.5	1 361.00	227.2	158.2
2008	1 425 612	3 319 899 014	2 328.75	175.4	23 578.00	161.4	1 222.00	204.0	180.8
2009	1 347 620	3 648 903 196	2 707.66	203.9	26 579.00	182.0	1 316.00	219.7	180.7

\* Including provision for replacement value. (Source: Vinpro)

\*\* Excluding depreciation, interest and amounts reserved. (Source: 1994 - 2003 Vinpro)

\*\* Including depreciation, interest and amounts reserved. (Source: 2004 - 2009 PricewaterhouseCoopers)



7.2 AVERAGE PRICES OF WINE SOLD IN BULK

TYPE	CENT PER LITRE						
	2003	2004	2005	2006	2007	2008	2009
Cabernet Sauvignon	799.14	691.70	596.76	476.23	430.49	451.74	539.66
<b>TREND</b>	<b>97.08</b>	<b>86.56</b>	<b>86.27</b>	<b>79.80</b>	<b>90.40</b>	<b>104.94</b>	<b>119.46</b>
Cabernet Franc	736.52	650.08	384.92	408.12	436.73	396.56	448.48
<b>TREND</b>	<b>104.88</b>	<b>88.26</b>	<b>59.21</b>	<b>106.03</b>	<b>107.01</b>	<b>90.80</b>	<b>113.09</b>
Merlot	729.32	619.63	471.33	426.29	396.68	417.67	495.26
<b>TREND</b>	<b>95.23</b>	<b>84.96</b>	<b>76.07</b>	<b>90.44</b>	<b>93.05</b>	<b>105.29</b>	<b>118.58</b>
Pinotage	651.98	519.22	443.73	392.88	396.68	410.15	472.69
<b>TREND</b>	<b>94.51</b>	<b>79.64</b>	<b>85.46</b>	<b>88.54</b>	<b>100.97</b>	<b>103.40</b>	<b>115.25</b>
Ruby Cabernet	617.91	542.65	411.45	393.36	302.83	352.68	418.68
<b>TREND</b>	<b>100.56</b>	<b>87.82</b>	<b>75.82</b>	<b>95.60</b>	<b>76.99</b>	<b>116.46</b>	<b>118.71</b>
Shiraz	757.73	638.04	548.21	514.37	458.12	471.89	560.82
<b>TREND</b>	<b>101.24</b>	<b>84.20</b>	<b>85.92</b>	<b>93.83</b>	<b>89.06</b>	<b>103.01</b>	<b>118.85</b>
Cinsaut	540.29	485.66	396.57	349.50	317.42	328.71	377.52
<b>TREND</b>	<b>111.09</b>	<b>89.89</b>	<b>81.66</b>	<b>88.13</b>	<b>90.82</b>	<b>103.56</b>	<b>114.85</b>
Pinot noir	740.05	896.91	652.16	420.45	673.14	523.10	779.54
<b>TREND</b>	<b>117.24</b>	<b>121.20</b>	<b>72.71</b>	<b>64.47</b>	<b>160.10</b>	<b>77.71</b>	<b>149.02</b>
Rosé & Blanc de Noir	366.92	374.01	305.31	304.68	297.13	312.58	346.20
<b>TREND</b>	<b>124.59</b>	<b>101.93</b>	<b>81.63</b>	<b>99.79</b>	<b>97.52</b>	<b>105.20</b>	<b>110.76</b>
Other red & blends	565.19	490.68	384.24	386.66	336.41	346.98	431.30
<b>TREND</b>	<b>112.11</b>	<b>86.82</b>	<b>78.31</b>	<b>100.63</b>	<b>87.00</b>	<b>103.14</b>	<b>124.30</b>
Chardonnay	470.17	485.06	494.22	495.11	474.14	481.54	523.90
<b>TREND</b>	<b>118.71</b>	<b>103.17</b>	<b>101.89</b>	<b>100.18</b>	<b>95.76</b>	<b>101.56</b>	<b>108.80</b>
Sauvignon blanc	481.06	497.24	522.11	547.53	517.21	519.00	546.06
<b>TREND</b>	<b>117.56</b>	<b>103.36</b>	<b>105.00</b>	<b>104.87</b>	<b>94.46</b>	<b>100.35</b>	<b>105.21</b>
Colombar	273.69	264.20	277.70	293.68	297.46	297.23	314.72
<b>TREND</b>	<b>134.71</b>	<b>96.53</b>	<b>105.11</b>	<b>105.75</b>	<b>101.29</b>	<b>99.92</b>	<b>105.88</b>
Crouchen (Cape Riesling)	281.41	281.96	313.12	323.79	317.82	326.05	357.14
<b>TREND</b>	<b>138.07</b>	<b>100.20</b>	<b>111.05</b>	<b>103.41</b>	<b>98.16</b>	<b>102.59</b>	<b>109.54</b>
Sémillon	330.08	336.02	332.64	339.03	352.93	365.78	406.10
<b>TREND</b>	<b>137.01</b>	<b>101.80</b>	<b>98.99</b>	<b>101.92</b>	<b>104.10</b>	<b>103.64</b>	<b>111.02</b>
Chenin blanc	302.90	290.08	304.43	317.27	323.17	321.45	350.23
<b>TREND</b>	<b>140.75</b>	<b>95.77</b>	<b>104.95</b>	<b>104.22</b>	<b>101.86</b>	<b>99.47</b>	<b>108.95</b>
Other white & blends	253.83	250.99	254.85	274.39	275.02	270.91	296.57
<b>TREND</b>	<b>135.17</b>	<b>98.88</b>	<b>101.54</b>	<b>107.67</b>	<b>100.23</b>	<b>98.51</b>	<b>109.47</b>
Fortified wine *	297.10	317.72	346.88	354.58	371.37	385.37	410.41
<b>TREND</b>	<b>127.72</b>	<b>106.94</b>	<b>109.18</b>	<b>102.22</b>	<b>104.74</b>	<b>103.77</b>	<b>106.50</b>
All varieties	378.06	354.16	338.35	338.42	334.87	340.67	384.21
<b>TREND</b>	<b>126.29</b>	<b>93.68</b>	<b>95.54</b>	<b>100.02</b>	<b>98.95</b>	<b>101.73</b>	<b>112.78</b>
All red varieties	634.77	547.18	440.49	406.02	374.41	386.75	459.08
<b>TREND</b>	<b>102.16</b>	<b>86.20</b>	<b>80.50</b>	<b>92.17</b>	<b>92.21</b>	<b>103.30</b>	<b>118.70</b>
All white varieties	291.14	287.97	297.57	310.51	314.46	314.71	345.44
<b>TREND</b>	<b>134.86</b>	<b>98.91</b>	<b>103.33</b>	<b>104.35</b>	<b>101.27</b>	<b>100.08</b>	<b>109.76</b>

\* Price excludes added wine spirit.

	CENT PER LITRE						
	2003	2004	2005	2006	2007	2008	2009
Concentrate / Sweet must for sweetening	212.13	233.07	240.21	236.43	262.13	293.28	362.17

	CENT PER LITRE @ 10% ALC/VOL						
	2003	2004	2005	2006	2007	2008	2009
Wine for brandy	186.57	198.21	207.30	210.59	222.43	225.45	236.33

	CENT PER LITRE @ 10% ALC/VOL						
	2003	2004	2005	2006	2007	2008	2009
Distilling wine	103.09	97.22	97.43	94.10	93.36	95.50	97.84

**7.3 AVERAGE PRICES OF GRAPES SOLD FOR THE PRODUCTION OF WINE**

**7.3.1 PRICES FOR DELIVERIES TO PRODUCER CELLARS BY MEMBERS**

VARIETY	AVERAGE PRICES (R/TON)						
	2003	2004	2005	2006	2007	2008 *	2009 *
Cabernet Sauvignon	4 080	3 228	2 366	1 987	1 958	2 232	2 163
<b>TREND</b>	<b>89</b>	<b>79</b>	<b>73</b>	<b>84</b>	<b>99</b>	<b>114</b>	<b>97</b>
Merlot	3 602	2 477	1 997	1 774	1 764	1 931	2 010
<b>TREND</b>	<b>90</b>	<b>69</b>	<b>81</b>	<b>89</b>	<b>99</b>	<b>109</b>	<b>104</b>
Pinotage	3 198	2 139	1 770	1 673	1 632	1 773	1 889
<b>TREND</b>	<b>90</b>	<b>67</b>	<b>83</b>	<b>95</b>	<b>98</b>	<b>109</b>	<b>107</b>
Cinsaut	2 718	2 088	1 410	1 326	1 333	1 374	1 542
<b>TREND</b>	<b>100</b>	<b>77</b>	<b>68</b>	<b>94</b>	<b>101</b>	<b>103</b>	<b>112</b>
Pinot noir	2 784	2 437	2 491	1 725	2 295	2 453	2 649
<b>TREND</b>	<b>97</b>	<b>88</b>	<b>102</b>	<b>69</b>	<b>133</b>	<b>107</b>	<b>108</b>
Shiraz	3 524	2 633	2 091	1 906	1 845	2 104	2 214
<b>TREND</b>	<b>95</b>	<b>75</b>	<b>79</b>	<b>91</b>	<b>97</b>	<b>114</b>	<b>105</b>
Other red	2 661	1 836	1 211	1 209	1 192	1 272	1 466
<b>TREND</b>	<b>97</b>	<b>69</b>	<b>66</b>	<b>100</b>	<b>99</b>	<b>107</b>	<b>115</b>
Chenin blanc	1 240	1 217	1 236	1 295	1 344	1 355	1 424
<b>TREND</b>	<b>133</b>	<b>98</b>	<b>102</b>	<b>105</b>	<b>104</b>	<b>101</b>	<b>105</b>
Sauvignon blanc	2 214	2 577	2 675	2 709	2 589	2 656	2 569
<b>TREND</b>	<b>118</b>	<b>116</b>	<b>104</b>	<b>101</b>	<b>96</b>	<b>103</b>	<b>97</b>
Chardonnay	2 309	2 478	2 403	2 453	2 436	2 560	2 396
<b>TREND</b>	<b>115</b>	<b>107</b>	<b>97</b>	<b>102</b>	<b>99</b>	<b>105</b>	<b>94</b>
Crouchen (Cape Riesling)	1 283	1 308	1 387	1 522	1 453	1 376	1 465
<b>TREND</b>	<b>144</b>	<b>102</b>	<b>106</b>	<b>110</b>	<b>95</b>	<b>95</b>	<b>106</b>
Colombar	1 089	1 045	1 085	1 060	1 174	1 199	1 284
<b>TREND</b>	<b>136</b>	<b>96</b>	<b>104</b>	<b>98</b>	<b>111</b>	<b>102</b>	<b>107</b>
Muscat d'Alexandrie	1 069	1 135	1 075	1 277	1 397	1 380	1 401
<b>TREND</b>	<b>135</b>	<b>106</b>	<b>95</b>	<b>119</b>	<b>109</b>	<b>99</b>	<b>102</b>
Sémillon	1 595	1 711	1 617	1 862	1 701	1 750	1 813
<b>TREND</b>	<b>131</b>	<b>107</b>	<b>95</b>	<b>115</b>	<b>91</b>	<b>103</b>	<b>104</b>
Other white	884	867	904	823	1 028	1 066	1 215
<b>TREND</b>	<b>136</b>	<b>98</b>	<b>104</b>	<b>91</b>	<b>125</b>	<b>104</b>	<b>114</b>
All varieties	1 624	1 458	1 387	1 362	1 434	1 509	1 601
<b>TREND</b>	<b>122</b>	<b>90</b>	<b>95</b>	<b>98</b>	<b>105</b>	<b>105</b>	<b>106</b>
All red varieties	3 271	2 387	1 803	1 649	1 635	1 799	1 898
<b>TREND</b>	<b>93</b>	<b>73</b>	<b>76</b>	<b>91</b>	<b>99</b>	<b>110</b>	<b>106</b>
All white varieties	1 201	1 195	1 237	1 255	1 358	1 400	1 493
<b>TREND</b>	<b>133</b>	<b>100</b>	<b>104</b>	<b>101</b>	<b>108</b>	<b>103</b>	<b>107</b>

\* Preliminary

### 7.3.2 OTHER PRICES

(Excluding deliveries of members to Producer cellars - refer to paragraph 6.3 for %)

VARIETY	AVERAGE PRICES (R/TON)						
	2003	2004	2005	2006	2007	2008	2009
Cabernet Sauvignon	5 605	5 476	4 212	3 428	3 026	3 196	3 984
<b>TREND</b>	<b>103</b>	<b>98</b>	<b>77</b>	<b>81</b>	<b>88</b>	<b>106</b>	<b>125</b>
Merlot	5 477	5 327	3 963	3 186	2 960	3 077	3 651
<b>TREND</b>	<b>103</b>	<b>97</b>	<b>74</b>	<b>80</b>	<b>93</b>	<b>104</b>	<b>119</b>
Pinotage	4 827	4 376	3 202	2 602	2 631	2 655	3 393
<b>TREND</b>	<b>103</b>	<b>91</b>	<b>73</b>	<b>81</b>	<b>101</b>	<b>101</b>	<b>128</b>
Cinsaut	2 753	2 757	2 271	2 139	2 126	2 092	2 311
<b>TREND</b>	<b>109</b>	<b>100</b>	<b>82</b>	<b>94</b>	<b>99</b>	<b>98</b>	<b>110</b>
Pinot noir	4 806	5 191	4 549	4 172	4 163	4 603	4 883
<b>TREND</b>	<b>114</b>	<b>108</b>	<b>88</b>	<b>92</b>	<b>100</b>	<b>111</b>	<b>106</b>
Shiraz	5 294	5 036	3 907	3 027	3 255	3 329	4 090
<b>TREND</b>	<b>104</b>	<b>95</b>	<b>78</b>	<b>77</b>	<b>108</b>	<b>102</b>	<b>123</b>
Other red	4 172	4 231	3 773	2 979	2 412	2 911	3 781
<b>TREND</b>	<b>107</b>	<b>101</b>	<b>89</b>	<b>79</b>	<b>81</b>	<b>121</b>	<b>130</b>
Chenin blanc	1 735	2 032	2 198	2 141	2 352	2 349	2 813
<b>TREND</b>	<b>159</b>	<b>117</b>	<b>108</b>	<b>97</b>	<b>110</b>	<b>100</b>	<b>120</b>
Sauvignon blanc	3 705	4 166	4 439	4 561	4 580	4 668	5 165
<b>TREND</b>	<b>110</b>	<b>112</b>	<b>107</b>	<b>103</b>	<b>100</b>	<b>102</b>	<b>111</b>
Chardonnay	3 567	3 733	3 841	3 711	3 630	3 739	4 185
<b>TREND</b>	<b>116</b>	<b>105</b>	<b>103</b>	<b>97</b>	<b>98</b>	<b>103</b>	<b>112</b>
Crouchen (Cape Riesling)	1 614	1 750	2 040	2 021	2 370	2 018	2 450
<b>TREND</b>	<b>116</b>	<b>108</b>	<b>117</b>	<b>99</b>	<b>117</b>	<b>85</b>	<b>121</b>
Colombar	1 111	1 079	1 180	1 168	1 263	1 169	1 257
<b>TREND</b>	<b>151</b>	<b>97</b>	<b>109</b>	<b>99</b>	<b>108</b>	<b>93</b>	<b>108</b>
Muscat d'Alexandrie	770	1 074	1 348	1 211	1 521	1 528	2 215
<b>TREND</b>	<b>92</b>	<b>139</b>	<b>126</b>	<b>90</b>	<b>126</b>	<b>100</b>	<b>145</b>
Sémillon	2 480	2 587	2 563	2 811	2 774	2 952	3 682
<b>TREND</b>	<b>135</b>	<b>104</b>	<b>99</b>	<b>110</b>	<b>99</b>	<b>106</b>	<b>125</b>
Other white	1 211	1 142	1 587	1 566	1 293	1 716	2 671
<b>TREND</b>	<b>72</b>	<b>94</b>	<b>139</b>	<b>99</b>	<b>83</b>	<b>133</b>	<b>156</b>
All varieties	4 041	4 133	3 593	3 128	2 971	3 173	3 917
<b>TREND</b>	<b>102</b>	<b>102</b>	<b>87</b>	<b>87</b>	<b>95</b>	<b>107</b>	<b>123</b>
All red varieties	5 112	4 947	3 864	3 140	2 961	3 127	3 865
<b>TREND</b>	<b>104</b>	<b>97</b>	<b>78</b>	<b>81</b>	<b>94</b>	<b>106</b>	<b>124</b>
All white varieties	2 438	2 713	3 103	3 109	2 988	3 241	3 998
<b>TREND</b>	<b>103</b>	<b>111</b>	<b>114</b>	<b>100</b>	<b>96</b>	<b>108</b>	<b>123</b>

7.4 PARTICULARS OF PACKAGED WINE SOLD ON THE LOCAL MARKET DURING 2009

7.4.1 TYPE OF CONTAINERS (NATURAL WINE ONLY)

TYPE OF CONTAINER	CONTAINER SIZE	LITRES							TREND 2009/2008	
		2003	2004	2005	2006	2007	2008	2009		
GLASS	< 750 ml	1 864 769	1 954 009	2 818 835	1 578 069	1 505 399	1 281 989	1 439 380	112.3	
	% of glass	1.7	1.7	2.3	1.2	1.1	0.9	1.0		
	750 ml	65 630 524	67 665 791	72 581 404	76 093 090	77 050 891	82 980 715	77 500 153	93.4	
	% of glass	58.7	59.7	59.3	58.0	56.9	57.2	55.1		
	1 l	17 905 329	18 897 955	18 970 611	20 117 416	20 417 656	21 084 452	20 847 774	98.9	
	% of glass	16.0	16.7	15.5	15.3	15.1	14.5	14.8		
	1,5 l - 2 l	18 849 772	17 174 267	20 012 615	24 596 118	27 932 931	32 180 258	34 957 981	108.6	
	% of glass	16.8	15.2	16.3	18.8	20.6	22.2	24.9		
	4,5 l	7 426 973	7 587 110	7 932 018	8 370 923	8 095 923	7 492 568	5 818 068	77.7	
	% of glass	6.6	6.7	6.5	6.4	6.0	5.2	4.1		
	OTHER	201 485	63 771	161 075	362 490	329 137	55 554	50 957	91.7	
% of glass	0.2	0.1	0.1	0.3	0.2	0.0	0.0			
<b>TOTAL</b>		<b>111 878 851</b>	<b>113 342 903</b>	<b>122 476 558</b>	<b>131 118 106</b>	<b>135 331 937</b>	<b>145 075 535</b>	<b>140 614 312</b>	<b>96.9</b>	
<b>As % of total natural wine</b>		<b>39.0</b>	<b>39.7</b>	<b>42.9</b>	<b>45.9</b>	<b>45.0</b>	<b>47.7</b>	<b>48.2</b>		
PLASTIC	< 750 ml	644 139	989 793	890 636	1 038 138	891 747	1 232 614	842 863	68.4	
	% of plastic	1.1	1.6	1.5	1.8	1.5	1.9	1.4		
	750 ml	1 521 769	1 131 288	904 947	835 469	684 644	677 692	581 444	85.8	
	% of plastic	2.6	1.9	1.6	1.5	1.1	1.0	1.0		
	1 l	25 266 601	28 830 717	27 851 534	28 681 672	30 187 069	30 178 589	27 921 187	92.5	
	% of plastic	43.4	48.0	47.8	50.1	49.4	45.5	46.2		
	5 l	20 809 026	19 957 300	19 918 665	18 499 458	21 772 545	25 015 845	21 596 960	86.3	
	% of plastic	35.7	33.2	34.2	32.3	35.7	37.7	35.8		
	OTHER	10 028 539	9 155 759	8 738 950	8 186 032	7 514 061	9 183 677	9 440 152	102.8	
	% of plastic	17.2	15.2	15.0	14.3	12.3	13.9	15.6		
	<b>TOTAL</b>		<b>58 270 074</b>	<b>60 064 857</b>	<b>58 304 732</b>	<b>57 240 770</b>	<b>61 050 065</b>	<b>66 288 417</b>	<b>60 382 605</b>	<b>91.1</b>
<b>As % of total natural wine</b>		<b>20.3</b>	<b>21.0</b>	<b>20.4</b>	<b>20.0</b>	<b>20.3</b>	<b>21.8</b>	<b>20.7</b>		
BAG-IN-BOX	2 l	9 173 564	9 626 625	7 934 090	7 521 844	7 759 170	7 631 628	7 466 426	97.8	
	% of bag-in-box	14.3	14.6	12.5	12.1	10.6	9.8	9.5		
	3 l	4 174 328	4 774 895	5 964 616	6 426 547	7 831 659	9 394 254	12 229 800	130.2	
	% of bag-in-box	6.5	7.3	9.4	10.4	10.7	12.1	15.6		
	5 l	50 356 295	50 964 411	48 852 475	47 028 925	56 046 510	59 454 020	57 839 800	97.3	
	% of bag-in-box	78.6	77.5	77.1	75.9	76.4	76.6	73.7		
	OTHER	347 698	391 872	619 978	963 437	1 702 771	1 147 027	928 238	80.9	
	% of bag-in-box	0.5	0.6	1.0	1.6	2.3	1.5	1.2		
	<b>TOTAL</b>		<b>64 051 885</b>	<b>65 757 803</b>	<b>63 371 159</b>	<b>61 940 753</b>	<b>73 340 110</b>	<b>77 626 929</b>	<b>78 464 264</b>	<b>101.1</b>
	<b>As % of total natural wine</b>		<b>22.3</b>	<b>23.0</b>	<b>22.2</b>	<b>21.7</b>	<b>24.4</b>	<b>25.5</b>	<b>26.9</b>	
	FOIL BAGS	2 l	2 010 113	1 374 830	3 634 946	3 143 198	2 359 020	2 313 540	2 188 678	94.6
% of foil bags		4.2	3.3	10.1	10.1	8.8	21.4	28.0		
5 l		45 520 820	40 166 672	32 129 600	27 418 150	23 873 565	8 409 725	5 565 125	66.2	
% of foil bags		94.2	96.4	89.1	88.1	89.1	77.9	71.2		
OTHER		767 251	130 827	282 976	562 701	560 276	75769.0	65172.0	86.0	
% of foil bags		1.6	0.3	0.8	1.8	2.1	0.7	0.8		
<b>TOTAL</b>			<b>48 298 184</b>	<b>41 672 329</b>	<b>36 047 522</b>	<b>31 124 049</b>	<b>26 792 861</b>	<b>10 799 034</b>	<b>7 818 975</b>	<b>72.4</b>
<b>As % of total natural wine</b>		<b>16.8</b>	<b>14.6</b>	<b>12.6</b>	<b>10.9</b>	<b>8.9</b>	<b>3.5</b>	<b>2.7</b>		
TETRA PACKS	500 ml	615 550	594 477	609 149	666 899	649 778	274 655	203 135	74.0	
	% of tetra packs	14.1	12.6	11.7	15.0	14.3	6.1	4.5		
	1 l	3 643 830	3 948 602	4 368 353	3 586 801	3 501 333	4 127 133	4 104 294	99.4	
	% of tetra packs	83.7	83.5	83.6	80.6	77.0	91.2	91.6		
	OTHER	93 697	184 871	249 552	195 340	395 069	121 192	173 941	143.5	
	% of tetra packs	2.2	3.9	4.8	4.4	8.7	2.7	3.9		
	<b>TOTAL</b>		<b>4 353 077</b>	<b>4 727 950</b>	<b>5 227 053</b>	<b>4 449 040</b>	<b>4 546 180</b>	<b>4 522 980</b>	<b>4 481 369</b>	<b>99.1</b>
<b>As % of total natural wine</b>		<b>1.5</b>	<b>1.7</b>	<b>1.8</b>	<b>1.6</b>	<b>1.5</b>	<b>1.5</b>	<b>1.5</b>		
<b>TOTAL NATURAL WINE</b>		<b>286 852 070</b>	<b>285 565 841</b>	<b>285 427 024</b>	<b>285 872 718</b>	<b>301 061 153</b>	<b>304 312 895</b>	<b>291 761 525</b>	<b>95.9</b>	

Included in these figures are the sales of locally bottled imported natural wine

Above total differs from the domestic sales figure for natural wine in Table 10.1 because not all roleplayers within the industry participates.

**7.4.2 TYPE OF WINE SOLD IN 750 ml GLASS CONTAINERS**

		LITRES							Trend
	TYPE OF WINE	2003	2004	2005	2006	2007	2008	2009	2009/2008
<b>Natural White</b>	Chardonnay	2 749 384	2 659 949	2 877 219	3 206 667	3 122 636	3 233 076	3 072 756	95.0
	Sauvignon Blanc	4 474 621	5 159 076	6 395 432	7 184 813	8 098 087	8 756 066	9 084 215	103.7
	Chenin Blanc	1 374 020	1 746 286	2 114 194	2 367 604	2 225 445	2 680 921	2 690 998	100.4
	Dry White	21 234 518	19 732 452	19 418 551	19 078 712	19 228 740	21 130 820	16 702 363	79.0
	Semi Sweet	6 499 290	6 191 079	6 333 385	6 479 902	6 213 353	5 658 241	4 601 713	81.3
	<b>Total White</b>	<b>36 331 833</b>	<b>35 488 842</b>	<b>37 138 781</b>	<b>38 317 698</b>	<b>38 888 261</b>	<b>41 459 124</b>	<b>36 152 045</b>	<b>87.2</b>
<b>Natural Red</b>	Cabernet	3 186 743	3 269 568	3 502 855	4 388 916	4 373 266	4 692 006	4 340 395	92.5
	Pinotage	2 777 319	2 285 192	2 567 315	2 798 894	2 849 294	2 848 480	2 899 625	101.8
	Shiraz	1 741 493	2 027 543	2 146 167	3 020 143	3 057 393	3 312 598	3 252 802	98.2
	Merlot	2 049 806	2 257 701	2 600 238	3 151 830	3 417 955	3 984 226	3 961 517	99.4
	Other red	15 125 388	17 509 796	19 260 276	19 936 903	20 424 713	20 932 235	20 464 529	97.8
	<b>Total Red</b>	<b>24 880 749</b>	<b>27 349 800</b>	<b>30 076 851</b>	<b>33 296 686</b>	<b>34 122 621</b>	<b>35 769 545</b>	<b>34 918 868</b>	<b>97.6</b>
<b>Rosé / Blanc de Noir</b>		4 417 942	4 827 150	5 365 773	4 478 707	3 983 543	5 752 047	6 429 240	<b>111.8</b>
<b>Sparkling</b>	Cap Classique	1 252 588	1 524 605	1 560 480	1 497 095	1 770 766	1 764 148	1 719 727	<b>97.5</b>
	Other Sparkling	6 042 003	6 441 026	6 642 314	6 708 930	7 384 634	7 943 038	6 770 477	<b>85.2</b>

**7.4.3 AVERAGE WHOLESALE PRICES OF WINE SOLD  
GLASS CONTAINERS - RAND PER CARTON (12 X 750 ml) INCLUDING VAT**

TYPE OF WINE	2006	2007	2008	2009	TREND 2009/2008	TREND 2008/2007
<b>Natural white</b>						
Chardonnay	344	371	390	433	111	105
Sauvignon blanc	316	333	345	380	110	104
Chenin blanc	239	263	277	305	110	105
Semi-sweet	200	210	216	243	113	103
Dry white	178	190	192	228	119	101
<b>Natural red</b>						
Cabernet Sauvignon	430	438	441	467	106	101
Pinotage	400	425	445	493	111	105
Shiraz	403	434	450	489	109	104
Merlot	375	395	404	434	107	102
Other red	259	291	308	347	113	106
<b>Rosé and Blanc de Noir</b>	205	214	214	228	107	100
<b>Sparkling</b>						
Cap classique	489	538	636	680	107	118
Other sparkling	321	341	359	402	112	105

\* Selling prices of wholesalers, private wine cellars and producer cellars.

**5 LITRE BAG-IN-BOX (INCLUDING VAT) - NATURAL WINE**

	< R33	> R33
2003	13 %	87 %
2004	6 %	94 %
2005	4 %	96 %
2006	1 %	99 %
2007	1 %	99 %
2008		100 %
2009		100 %

\* Selling prices of wholesalers, private wine cellars and producer cellars.

## 8 EXPORTS

## 8.1 TOTAL QUANTITY OF WINE EXPORTED

YEAR	NATURAL WINE	FORTIFIED WINE	SPARKLING WINE	TOTAL LITRES	TREND	EXPORT AS % OF WINE PRODUCTION
1998	115 782 195	1 116 766	524 676	117 423 637	106.7	21.6
1999	126 263 186	695 535	809 619	127 768 340	108.8	21.4
2000	139 800 022	471 513	685 237	140 956 772	110.3	26.1
2001	175 978 105	548 388	779 299	177 305 792	125.8	33.4
2002	215 511 730	520 936	1 360 842	217 393 508	122.6	38.3
2003	236 374 105	525 789	1 564 707	238 464 601	109.7	33.5
2004	265 761 884	413 393	1 552 885	267 728 162	112.3	38.4
2005	279 128 314	406 982	1 537 824	281 073 120	105.0	44.7
2006	269 166 506	486 547	2 018 235	271 671 288	96.7	38.3
2007	309 354 585	405 696	2 779 364	312 539 645	115.0	42.8
2008	407 319 613	423 207	3 952 009	411 694 829	131.7	53.9
2009	389 141 149	282 636	6 206 991	395 630 776	96.1	49.1

## 8.2 TYPES OF WINE AND OTHER LIQUOR PRODUCTS EXPORTED DURING 2009 - LITRES

TYPES OF WINE AND SPIRITS	PACKAGED		BULK		TOTAL LITRES		
	LITRES	AS % OF TOTAL PER VARIETY	LITRES	AS % OF TOTAL PER VARIETY	2009	2008	2007
Chardonnay	17 231 125	65.19	9 200 511	34.81	26 431 636	29 604 908	21 016 766
Sauvignon blanc	17 124 743	86.88	2 585 926	13.12	19 710 669	19 893 910	16 229 875
Chenin blanc	19 139 297	46.58	21 949 183	53.42	41 088 480	43 082 772	39 294 521
Other white wine	44 432 021	57.46	32 890 620	42.54	77 322 641	80 975 613	50 294 872
Blanc de Noir & Rosé	15 406 449	57.28	11 492 144	42.72	26 898 593	24 496 673	18 388 602
Cabernet Sauvignon	15 471 552	76.16	4 844 124	23.84	20 315 676	21 548 702	19 331 346
Shiraz	17 974 373	83.68	3 504 842	16.32	21 479 215	21 356 429	16 836 590
Pinotage	9 853 129	53.39	8 600 921	46.61	18 454 050	17 604 946	17 203 507
Merlot	9 182 054	78.29	2 546 054	21.71	11 728 108	11 141 057	9 109 697
Other red wine	72 797 060	57.91	52 915 021	42.09	125 712 081	137 614 603	101 648 809
<b>Subtotal natural wine</b>	<b>238 611 803</b>	<b>61.32</b>	<b>150 529 346</b>	<b>38.68</b>	<b>389 141 149</b>	<b>407 319 613</b>	<b>309 354 585</b>
Fortified wine	282 636	100.00	-	-	282 636	423 207	405 696
Sparkling wine	6 206 991	100.00	-	-	6 206 991	3 952 009	2 779 364
<b>Total wine</b>	<b>245 101 430</b>	<b>61.95</b>	<b>150 529 346</b>	<b>38.05</b>	<b>395 630 776</b>	<b>411 694 829</b>	<b>312 539 645</b>
Flavoured grape liquor	66 565	100.00	-	-	66 565	15 522	12 702
Alcoholic fruit beverage	15 742 715	100.00	-	-	15 742 715	5 974 213	2 083 950
Brandy	531 848	56.43	410 639	43.57	942 487	488 959	346 352
Grape-, Cane-, Unspecified spirit	199 380	0.67	29 781 483	99.33	29 980 863	34 070 997	2 044 772
Spirit aperitif, Spirit cooler, Bitters	46 276	100.00	-	-	46 276	21 434	11 429
Whisky	437 862	98.21	8 000	1.79	445 862	134 955	24 424
Vodka	493 780	90.50	51 840	9.50	545 620	239 667	286 476
Rum	7 538	100.00	-	-	7 538	180	2 970
Gin	200 031	89.61	23 200	10.39	223 231	113 799	123 154
Liqueur, Vermouth and Aperitif	6 606 509	100.00	-	-	6 606 509	6 685 029	5 878 020

SOURCE: DEPARTMENT OF AGRICULTURE, FORESTRY AND FISHERIES, DIRECTORATE FOOD SAFETY AND QUALITY ASSURANCE

8.3 PACKAGED AND BULK NATURAL WINE EXPORTS PER COUNTRY - LITRES

COUNTRY	2008				2009				TREND 2009/2008			
	WHITE	RED	BLANC DE NOIR / ROSÉ	TOTAL	WHITE	RED	BLANC DE NOIR / ROSÉ	TOTAL	WHITE	RED	BLANC DE NOIR / ROSÉ	TOTAL
UNITED KINGDOM	53 464 267	46 924 433	10 240 223	110 628 923	58 565 148	55 027 454	11 975 129	125 567 731	110	117	117	114
GERMANY	21 654 403	40 048 467	5 653 912	67 356 782	21 118 347	42 582 917	7 133 000	70 834 264	98	106	126	105
SWEDEN	11 409 182	17 161 048	220 719	28 790 949	12 829 800	24 405 162	485 604	37 720 566	112	142	220	131
THE NETHERLANDS	10 756 177	14 183 394	4 332 201	29 271 772	11 248 262	12 592 576	3 764 454	27 605 292	105	89	87	94
DENMARK	3 640 287	11 813 161	222 405	15 675 853	4 036 121	11 941 774	183 315	16 161 210	111	101	82	103
U.S.A.	11 921 123	4 514 670	189 012	16 624 805	8 324 860	5 206 575	189 180	13 720 615	70	115	100	83
CANADA	6 779 794	6 677 756	105 998	13 563 548	5 468 297	5 994 558	96 737	11 559 592	81	90	91	85
BELGIUM	4 686 476	3 620 284	446 906	8 753 666	4 578 955	3 617 971	646 793	8 843 719	98	100	145	101
FRANCE	2 690 131	4 696 500	1 036 230	8 422 861	8 422 861	4 391 786	990 365	8 671 372	122	94	96	103
NEW ZEALAND	5 901 035	4 960 032	27 527	10 888 594	4 398 701	2 701 865	24 579	7 125 145	75	54	89	65
RUSSIA	16 224 572	1 818 843	302 032	18 345 447	6 332 183	674 626	5 018	7 011 827	39	37	2	38
ANGOLA *	331 526	24 212 648	6 948	24 551 122	2 783 932	3 365 100	10 823	6 159 855	840	14	156	25
FINLAND	2 944 710	2 810 943	31 167	5 786 820	2 823 124	2 928 605	3 011	5 754 740	96	104	10	99
SWITZERLAND	2 905 502	1 814 328	544 780	5 264 610	1 984 598	1 797 951	466 863	4 249 412	68	99	86	81
CHINA	304 579	4 021 019	7 061	4 332 659	2 443 397	1 610 061	11 556	4 065 014	802	40	164	94
REPUBLIC OF IRELAND	2 718 185	2 625 293	101 627	5 445 105	1 694 715	1 308 247	47 302	3 050 264	62	50	47	56
JAPAN	697 470	1 080 937	5 211	1 783 658	1 131 952	1 681 892	4 923	2 818 767	162	156	94	158
NIGERIA *	290 873	1 872 399	9 666	2 172 938	343 338	2 060 055	35 460	2 438 853	118	110	367	112
NORWAY	307 886	1 472 978	909	1 781 773	327 353	1 666 830	0	1 994 183	106	113	0	112
KENYA	859 924	918 056	20 023	1 798 003	908 399	771 152	54 254	1 733 805	106	84	271	96
THAILAND	275 736	424 344	28 186	728 266	701 231	981 619	7 685	1 690 535	254	231	27	232
UNITED ARAB EMIRATES	678 912	746 074	43 271	1 468 257	732 202	834 835	39 743	1 606 780	108	112	92	109
AUSTRALIA	3 751 327	1 841 856	21 078	5 614 261	952 266	512 065	6 921	1 471 252	25	28	33	26
ITALY	264 794	283 192	49 985	597 971	705 615	652 254	25 405	1 383 274	266	230	51	231
TANZANIA	690 839	523 806	24 107	1 238 752	682 377	473 849	20 808	1 177 034	99	90	86	95
OTHER COUNTRIES	7 407 491	8 199 235	825 489	16 432 215	6 149 032	7 907 350	669 665	14 726 047	83	96	81	90
<b>TOTAL</b>	<b>173 557 201</b>	<b>209 265 736</b>	<b>24 496 673</b>	<b>407 319 610</b>	<b>164 553 426</b>	<b>197 689 129</b>	<b>26 898 593</b>	<b>389 141 148</b>	<b>95</b>	<b>94</b>	<b>110</b>	<b>96</b>

8.4 PACKAGED NATURAL WINE EXPORTS PER COUNTRY - LITRES

COUNTRY	2008				2009				TREND 2009/2008			
	WHITE	RED	BLANC DE NOIR / ROSÉ	TOTAL	WHITE	RED	BLANC DE NOIR / ROSÉ	TOTAL	WHITE	RED	BLANC DE NOIR / ROSÉ	TOTAL
UNITED KINGDOM	39 814 557	37 701 316	8 547 243	86 063 116	42 854 262	42 659 012	9 860 039	95 373 313	108	113	115	111
SWEDEN	11 409 182	16 152 338	220 719	27 782 239	12 638 500	19 549 027	485 604	32 673 131	111	121	220	118
THE NETHERLANDS	8 122 005	10 051 544	2 659 438	20 832 987	8 645 894	9 218 991	2 648 549	20 513 434	106	92	100	98
GERMANY	4 229 484	10 617 547	745 356	15 592 387	4 717 547	9 919 396	845 492	15 482 435	112	93	113	99
DENMARK	2 751 307	8 863 013	126 306	11 740 626	2 679 320	8 336 584	183 315	11 199 219	97	94	145	95
U.S.A.	4 035 531	4 247 970	189 012	8 472 513	3 816 911	4 488 162	189 180	8 494 253	95	106	100	100
CANADA	2 653 170	4 873 629	81 848	7 608 647	3 220 658	5 151 366	96 737	8 468 761	121	106	118	111
FINLAND	2 400 370	2 425 913	6 917	4 833 200	2 424 904	2 649 225	3 011	5 077 140	101	109	44	105
BELGIUM	2 499 566	2 102 427	204 226	4 806 219	2 390 190	1 933 460	259 768	4 583 418	96	92	127	95
REPUBLIC OF IRELAND	2 204 546	1 961 207	101 627	4 267 380	1 694 715	1 308 247	47 302	3 050 264	77	67	47	71
JAPAN	457 350	1 080 977	5 211	1 543 538	876 112	1 681 892	4 923	2 562 927	192	156	94	166
NIGERIA *	290 873	1 872 399	9 666	2 172 938	343 338	2 060 055	35 460	2 438 853	118	110	367	112
ANGOLA *	331 526	1 082 563	6 948	1 421 037	449 932	1 413 800	10 823	1 874 555	136	131	156	132
NEW ZEALAND	1 196 955	1 555 912	27 527	2 780 394	733 401	1 018 625	24 579	1 776 605	61	65	89	64
KENYA	849 984	907 176	20 023	1 777 183	908 399	771 152	54 254	1 733 805	107	85	271	96
NORWAY	259 850	1 235 518	909	1 496 277	279 093	1 428 110	0	1 707 203	107	116	0	114
UNITED ARAB EMIRATES	678 912	746 074	43 271	1 468 257	732 202	834 835	39 743	1 606 780	108	112	92	109
AUSTRALIA	1 338 503	977 836	21 078	2 337 417	952 266	512 065	6 921	1 471 252	71	52	33	63
CHINA	161 139	781 515	7 061	949 715	247 564	1 186 068	11 556	1 445 188	154	152	164	152
TANZANIA	690 839	523 806	24 107	1 238 752	682 377	473 849	20 808	1 177 034	99	90	86	95
RUSSIA	507 542	735 779	11 052	1 254 373	452 609	650 609	5 018	1 108 236	89	88	45	88
SWITZERLAND	287 405	528 908	13 491	829 804	368 726	690 969	6 980	1 066 675	128	131	52	129
ZAMBIA *	49 560	49 337	2 142	101 039	636 088	313 140	13 773	963 001	1 283	635	643	953
FRANCE	358 463	462 692	35 500	856 655	286 508	422 423	33 957	742 888	80	91	87	82
POLAND	239 765	559 635	28 526	827 926	213 521	444 226	22 991	680 738	89	79	81	82
OTHER COUNTRIES	3 853 702	6 019 550	464 272	10 337 524	4 682 149	6 162 879	495 666	11 340 694	121	102	107	110
<b>TOTAL</b>	<b>91 672 086</b>	<b>118 116 581</b>	<b>13 603 476</b>	<b>223 392 143</b>	<b>97 927 186</b>	<b>125 278 167</b>	<b>15 406 449</b>	<b>238 611 802</b>	<b>107</b>	<b>106</b>	<b>113</b>	<b>107</b>

8.5 BULK NATURAL WINE EXPORTS PER COUNTRY - LITRES

COUNTRY	2008				2009				TREND 2009/2008			
	WHITE	RED	BLANC DE NOIR / ROSÉ	TOTAL	WHITE	RED	BLANC DE NOIR / ROSÉ	TOTAL	WHITE	RED	BLANC DE NOIR / ROSÉ	TOTAL
GERMANY	17 424 919	29 430 920	4 908 556	51 764 395	16 400 800	32 663 521	6 287 508	55 351 829	94	111	128	107
UNITED KINGDOM	13 649 710	9 223 117	1 692 980	24 565 807	15 710 886	12 368 442	2 115 090	30 194 418	115	134	125	123
FRANCE	2 331 668	4 233 808	1 000 730	7 566 206	3 002 713	3 969 363	956 408	7 928 484	129	94	96	105
THE NETHERLANDS	2 634 172	4 131 850	1 672 763	8 438 785	2 602 368	3 373 585	1 115 905	7 091 858	99	82	67	84
RUSSIA	15 717 031	1 083 064	290 980	17 091 075	5 879 574	24 017	0	5 903 591	37	2	0	35
NEW ZEALAND	4 704 080	3 404 120	0	8 108 200	3 665 300	1 683 240	0	5 348 540	78	49	0	66
U.S.A.	7 885 592	266 700	0	8 152 292	4 507 949	718 413	0	5 226 362	57	269	0	64
SWEDEN	0	1 008 710	0	1 008 710	191 300	4 856 135	0	5 047 435	0	481	0	500
DENMARK	888 980	2 950 148	96 099	3 935 227	1 356 801	3 605 190	0	4 961 991	153	122	0	126
ANGOLA	0	23 130 085	0	23 130 085	2 334 000	1 951 300	0	4 285 300	0	8	0	19
BELGIUM	2 186 910	1 517 857	242 680	3 947 447	2 188 765	1 684 511	387 025	4 260 301	100	111	159	108
SWITZERLAND	2 618 097	1 285 420	531 289	4 434 806	1 615 872	1 106 982	459 883	3 182 737	62	86	87	72
CANADA	4 126 624	1 804 127	24 150	5 954 901	2 247 639	843 192	0	3 090 831	54	47	0	72
CHINA	143 440	3 239 504	0	3 382 944	2 195 833	423 993	0	2 619 826	1 531	13	0	57
THAILAND	143 490	265 450	23 980	432 920	594 900	831 400	0	1 426 300	415	313	0	329
ITALY	216 932	240 778	48 140	505 850	648 082	619 390	25 000	1 292 472	299	257	52	256
CZECH REPUBLIC	1 048 210	717 577	0	1 765 787	525 730	287 640	0	813 370	50	40	0	46
FINLAND	544 340	385 030	24 250	953 620	398 220	279 380	0	677 600	73	73	0	71
MAURITIUS	272 785	245 720	118 720	637 225	136 310	154 865	25 625	316 800	50	63	22	50
NORWAY	48 036	237 460	0	285 496	48 260	238 720	0	286 980	100	101	0	101
JAPAN	240 120	0	0	240 120	255 840	0	0	255 840	107	0	0	107
SENEGAL	73 260	47 840	146 560	267 660	47 800	71 060	119 700	238 560	65	149	82	89
VIETNAM	12 000	214 916	0	226 916	0	216 085	0	216 085	0	101	0	95
POLAND	24 000	191 128	0	215 128	0	214 875	0	214 875	0	112	0	100
MOZAMBIQUE	1 000	131 900	0	132 900	0	130 283	0	130 283	0	99</		

**8.6 NATURAL WINE EXPORTED IN CONTAINERS - LITRES**

COUNTRY	2008				2009				TREND 2009/2008			
	GLASS	BAG-IN-BOX	TETRA PACKS	TOTAL	GLASS	BAG-IN-BOX	TETRA PACKS	TOTAL	GLASS	BAG-IN-BOX	TETRA PACKS	TOTAL
UNITED KINGDOM	70 618 905	15 443 019	1 200	86 063 124	81 801 346	13 552 538	19 440	95 373 324	115.83	87.76	1 620.00	110.82
SWEDEN	5 804 934	21 977 305		27 782 239	7 203 889	25 469 243		32 673 132	124.10	115.89		117.60
THE NETHERLANDS	20 379 239	453 750		20 832 989	20 119 081	394 362		20 513 443	98.72	86.91		98.47
GERMANY	15 117 416	474 972		15 592 388	15 100 647	381 792		15 482 439	99.89	80.38		99.29
DENMARK	7 846 245	3 894 381		11 740 626	7 534 314	3 664 906		11 199 220	96.02	94.11		95.39
U.S.A.	8 400 721	71 792		8 472 513	8 367 949	126 304		8 494 253	99.61	175.93		100.26
CANADA	7 557 479	47 328	3 840	7 608 647	8 365 699	103 062		8 468 761	110.69	217.76		111.30
FINLAND	2 141 366	2 691 834		4 833 200	2 059 227	3 017 913		5 077 140	96.16	112.11		105.05
BELGIUM	4 479 437	326 784		4 806 221	4 268 262	315 156		4 583 418	95.29	96.44		95.36
REPUBLIC OF IRELAND	4 256 213	11 170		4 267 383	3 027 404	22 860		3 050 264	71.13	204.66		71.48
JAPAN	1 468 550	74 988		1 543 538	2 340 543	222 384		2 562 927	159.38	296.56		166.04
NIGERIA *	2 168 138	4 800		2 172 938	2 438 853			2 438 853	112.49	0.00		112.24
ANGOLA *	1 171 904	249 132		1 421 036	1 470 514	404 040		1 874 554	125.48	162.18		131.91
NEW ZEALAND	2 408 898	371 496		2 780 394	1 588 565	188 040		1 776 605	65.95	50.62		63.90
KENYA	638 143	1 139 040		1 777 183	563 181	1 170 624		1 733 805	88.25	102.77		97.56
NORWAY	507 273	973 211	15 792	1 496 276	483 479	1 209 684	14 040	1 707 203	95.31	124.30	88.91	114.10
UNITED ARAB EMIRATES	829 232	639 025		1 468 257	687 535	919 244		1 606 779	82.91	143.85		109.43
AUSTRALIA	2 337 417			2 337 417	1 471 155	100		1 471 255	62.94			62.94
CHINA	859 196	90 518		949 714	1 350 940	94 248		1 445 188	157.23	104.12		152.17
TANZANIA	732 476	506 276		1 238 752	711 454	450 028	15 552	1 177 034	97.13	88.89		95.02
RUSSIA	1 121 208	133 164		1 254 372	1 010 891	97 344		1 108 235	90.16	73.10		88.35
SWITZERLAND	829 803			829 803	1 049 791	16 884		1 066 675	126.51			128.55
ZAMBIA *	82 349	18 690		101 039	492 161	470 840		963 001	597.65	2 519.21		953.10
FRANCE	814 139	42 516		856 655	652 191	90 696		742 887	80.11	213.32		86.72
POLAND	823 325	4 600		827 925	680 737			680 737	82.68	0.00		82.22
OTHER COUNTRIES	8 393 690	1 844 543	99 300	10 337 533	8 625 115	2 522 182	193 410	11 340 707	102.76	136.74	194.77	109.70
<b>TOTAL</b>	<b>171 787 696</b>	<b>51 484 334</b>	<b>120 132</b>	<b>223 392 162</b>	<b>183 464 923</b>	<b>54 904 474</b>	<b>242 442</b>	<b>238 611 839</b>	<b>106.80</b>	<b>106.64</b>	<b>201.81</b>	<b>106.81</b>

\*As from 1 July 2006 all packaged exports to previously exempted African countries and surrounding islands are reflected in full.

SOURCE: DEPARTMENT OF AGRICULTURE, FORESTRY AND FISHERIES, DIRECTORATE FOOD SAFETY AND QUALITY ASSURANCE

## 9 IMPORTS

## 9.1 TOTAL

YEAR	LITRES							LITRES AA					
	BEER	GRAPE JUICE	* NATURAL WINE	FORTIFIED WINE	SPARKLING	VERMOUTH	OTHER	LIQUEUR	BRANDY	WHISKY	RUM	GIN & VODKA	OTHER SPIRITS
1992	7 000 000	2 155	517 462	31	97 533	6 768	190 212	255 694	52 900	7 370 842	672 290	25 601	247 806
1993	7 000 000	6 693	600 121	-	97 243	6 275	104 926	291 105	28 093	7 494 197	718 085	79 816	229 068
1994	10 300 000	-	378 166	36 603	68 285	-	11 880	74 381	29 096	8 129 850	629 813	35 357	511 919
1995	13 630 000	-	3 331 432	58 493	104 589	-	61 458	103 468	67 474	8 733 523	504 989	44 405	467 893
1996	17 820 000	1 547 571	16 382 778	148	182 394	66 586	309 023	687 144	74 185	7 936 635	735 533	72 310	10 004 410
1997	29 140 400	9	14 098 820	55 685	209 305	14 722	160 181	180 356	199 133	6 546 758	432 146	90 269	14 209 188
1998	40 250 000	-	8 245 482	22 365	105 797	40 296	91 260	114 311	1 644 445	4 367 618	404 612	81 673	8 056 329
1999	45 352 200	-	15 080 278	60 118	304 878	77 471	417 296	221 348	242 078	4 735 755	1 190 600	120 509	3 382 772
2000	46 428 500	-	7 753 414	79 893	110 804	123 218	100 320	123 858	488 954	4 935 085	698 435	95 710	311 310
2001	39 855 600	-	2 457 221	20 787	151 303	235 216	-	213 094	40 783	5 703 087	818 941	44 087	243 410
2002	42 834 700	-	31 426 953	23 283	121 996	822 167	900	101 449	24 169	5 700 000	757 918	58 904	2 465 985
2003	48 923 500	-	48 971 475	14 553	136 561	183 325	-	1 412 519	50 065	5 806 631	535 541	91 665	6 282 178
2004	80 000 000	-	2 305 544	33 492	315 672	116 956	22 860	145 062	37 708	6 100 000	388 128	142 140	4 848 176
2005	72 990 000	-	19 406 513	33 575	199 577	303 497	-	228 685	53 905	7 795 941	328 824	111 364	5 683 645
2006	86 457 900	-	18 765 375	32 807	273 183	153 998	-	247 670	102 857	8 972 157	329 632	107 578	5 259 325
2007	155 463 000	-	13 320 978	24 447	755 972	166 821	-	266 262	134 453	8 085 924	1 016 145	89 923	5 079 355
2008	221 822 000	-	19 594 384	10 265	610 776	240 937	25 000	371 837	50 832	9 306 276	787 658	82 928	1 684 464
2009	169 243 916	-	17 762 791	19 274	53 111	295 668	1 518	378 137	228 569	8 775 818	933 804	126 187	1 315 258

Figures based on various industry sources

\* Includes concentrate component for use in alcoholic fruit beverages as well as for sweetening of wine.

## 9.2 IMPORTS TO SOUTH AFRICA - PACKAGED AND BULK

	LITRES						TREND 2009/2008
	2008			2009			
	PACKAGED	BULK	TOTAL	PACKAGED	BULK	TOTAL	
BEER	221 822 000	-	221 822 000	169 243 916	-	169 243 916	76.3
GRAPE JUICE CONCENTRATE AND GRAPE JUICE	-	-	-	-	-	-	-
NATURAL WINE WHITE	195 343	18 995 438	19 190 781	1 232 897	16 176 000	17 408 897	90.7
NATURAL WINE RED	402 403	1 200	403 603	353 894	-	353 894	87.7
FORTIFIED WINE	10 265	-	10 265	19 274	-	19 274	187.8
SPARKLING	610 776	-	610 776	53 111	-	53 111	8.7
VERMOUTH	240 937	-	240 937	295 668	-	295 668	122.7
OTHER (e.g. coolers)	-	25 000	25 000	1 518	-	1 518	6.1
	LITRES AA						TREND 2009/2008
	2008			2009			
	PACKAGED	BULK	TOTAL	PACKAGED	BULK	TOTAL	
LIQUEUR	332 854	38 983	371 837	266 815	111 322	378 137	101.7
BRANDY	50 832	-	50 832	228 569	-	228 569	449.7
WHISKY	8 357 554	948 722	9 306 276	7 184 514	1 591 304	8 775 818	94.3
RUM	126 017	661 641	787 658	168 022	765 782	933 804	118.6
GIN & VODKA	82 928	-	82 928	121 420	4 767	126 187	152.2
OTHER SPIRITS	251 627	1 432 837	1 684 464	271 203	1 044 055	1 315 258	78.1

## 10 LIQUOR CONSUMPTION IN SOUTH AFRICA

### 10.1 WINE

[BACK TO INDEX](#)

YEAR	LITRES				TOTAL % CHANGE
	* NATURAL WINE	** FORTIFIED WINE	** SPARKLING WINE	TOTAL	
1993	296 060 744	35 297 200	8 381 400	339 739 344	-1.6
1994	320 378 032	36 509 698	8 568 835	365 456 565	7.6
1995	342 100 466	36 236 207	7 940 366	386 277 039	5.7
1996	359 748 332	37 975 562	7 928 130	405 652 024	5.0
1997	356 469 511	37 607 040	7 572 678	401 649 229	-1.0
1998	343 320 015	33 114 486	7 318 529	383 753 030	-4.5
1999	351 005 051	30 605 029	9 074 384	390 684 464	1.8
2000	355 203 198	28 430 650	5 861 993	389 495 841	-0.3
2001	355 660 131	28 430 650	6 076 093	390 166 874	0.2
2002	350 703 464	29 700 000	7 040 009	387 443 473	-0.7
2003	308 196 740	30 000 000	7 324 936	345 521 676	-10.8
2004	308 707 457	31 000 000	8 005 285	347 712 742	0.6
2005	299 792 670	32 000 000	8 256 847	340 049 517	-2.2
2006	298 605 362	33 500 000	8 293 090	340 398 452	0.1
2007	312 129 717	34 150 000	9 232 824	355 512 541	4.4
2008	312 398 624	33 700 000	9 722 667	355 821 291	0.1
2009	296 799 544	33 363 000	8 504 249	338 666 793	-4.8

\* Includes wine used in grape-based liquor and alcoholic fruit beverages.

\*\* Figures based on various industry sources

### 10.2 SPIRITS

YEAR	LITRES AA					TOTAL % CHANGE
	BRANDY	WINE SPIRIT	CANE SPIRIT	GRAIN SPIRIT	TOTAL	
1993	18 060 000	433 494	11 728 557	366 337	30 588 388	-2.2
1994	20 898 000	203 210	15 760 325	787 286	37 648 821	23.1
1995	22 360 000	267 868	14 953 765	404 791	37 986 424	0.9
1996	23 865 000	382 425	15 407 254	234 633	39 889 312	5.0
1997	23 650 000	253 399	15 581 978	338 604	39 823 981	-0.2
1998	19 565 000	286 094	14 791 976	713 894	35 356 964	-11.2
1999	18 469 000	299 006	12 452 377	778 802	31 999 185	-9.5
2000	16 628 000	225 246	13 570 323	116 117	30 539 686	-4.6
2001	17 372 000	213 772	13 367 849	111 105	31 064 726	1.7
2002	17 545 720	200 000	12 945 000	166 000	30 856 720	-0.7
2003	18 072 000	200 000	12 426 000	204 000	30 902 000	0.1
2004	18 710 000	200 000	12 200 000	250 000	31 360 000	1.5
2005	19 651 000	200 000	11 860 000	263 000	31 974 000	2.0
2006	20 240 000	200 000	11 267 000	289 000	31 996 000	0.1
2007	20 000 000	200 000	11 325 000	332 000	31 857 000	-0.4
2008	19 300 000	200 000	11 625 000	360 000	31 485 000	-1.2
2009	18 050 000	183 000	11 683 000	330 000	30 246 000	-3.9

Figures based on various industry sources

### 10.3 PER CAPITA CONSUMPTION IN SOUTH AFRICA

YEAR	WINE - LITRES PER CAPITA				SPIRITS (LITRES AA PER CAPITA)			
	NATURAL WINE	SPARKLING WINE	FORTIFIED WINE	TOTAL	BRANDY	OTHER SPIRITS	WHISKY	TOTAL
2000	8.21	0.13	0.66	9.00	0.38	0.34	0.19	0.91
2001	8.20	0.15	0.66	9.01	0.40	0.33	0.19	0.92
2002	8.04	0.17	0.70	8.91	0.40	0.31	0.17	0.88
2003	7.00	0.17	0.75	7.92	0.41	0.30	0.17	0.88
2004	6.73	0.17	0.75	7.65	0.41	0.29	0.17	0.87
2005	6.43	0.18	0.76	7.37	0.42	0.28	0.18	0.88
2006	6.24	0.19	0.71	7.14	0.43	0.26	0.20	0.89
2007*	6.52	0.20	0.71	7.43	0.42	0.26	0.22	0.90
2008*	6.43	0.21	0.69	7.33	0.40	0.26	0.22	0.88
2009*	6.05	0.17	0.68	6.90	0.37	0.26	0.20	0.83

Figures based on various industry sources

\* Estimate

### 10.4 MARKET FOR ALL SPIRITS IN SOUTH AFRICA

#### % SHARE BASED ON ALCOHOL CONTENT

YEAR	BRANDY	WHISKY	OTHER SPIRITS	TOTAL
2000	41.5	20.4	38.1	100.0
2001	43.4	20.2	36.4	100.0
2002	44.9	19.1	36.0	100.0
2003	45.8	18.9	35.3	100.0
2004	46.4	19.5	34.1	100.0
2005	47.1	20.7	32.2	100.0
2006	47.4	22.4	30.2	100.0
2007*	45.8	24.5	29.7	100.0
2008*	44.7	24.5	30.8	100.0
2009*	43.8	24.1	32.1	100.0

Figures based on various industry sources

\* Estimate

### 10.5 MARKET FOR ALCOHOLIC BEVERAGES IN SOUTH AFRICA

#### % SHARE BASED ON ALCOHOL CONTENT

YEAR	ALCOHOLIC FRUIT BEVERAGES	BEER	TRADITIONAL AFRICAN BEER	NATURAL WINE	BRANDY	OTHER SPIRITS	WHISKY	FORTIFIED WINE	SPARKLING WINE	TOTAL
2000	3.2	42.9	24.2	14.0	5.7	5.1	2.8	1.9	0.2	100.0
2001	3.3	42.4	24.6	14.0	5.9	4.9	2.8	1.9	0.2	100.0
2002	3.2	43.2	23.8	14.0	6.1	4.8	2.6	2.1	0.3	100.0
2003	3.3	44.9	23.2	12.4	6.3	4.7	2.6	2.3	0.3	100.0
2004	3.4	44.0	23.4	12.6	6.6	4.5	2.8	2.4	0.3	100.0
2005	3.8	44.4	22.9	12.0	6.8	4.3	3.0	2.5	0.3	100.0
2006	4.4	44.4	22.2	11.9	7.0	4.1	3.3	2.3	0.4	100.0
2007*	5.2	45.5	20.2	12.1	6.7	4.0	3.6	2.3	0.4	100.0
2008*	5.6	46.7	18.5	12.2	6.6	4.1	3.6	2.3	0.4	100.0
2009*	6.1	47.5	17.2	12.2	6.4	4.3	3.5	2.4	0.4	100.0

Figures based on various industry sources

\* Estimate

**11 TAXES**

**11.1 EXCISE DUTY**

WINE AND CIDER (R/litre)	DATE ADJUSTED							
	26.2.03	18.2.04	23.2.05	15.2.06	21.2.07	20.2.08	11.2.09	17.2.10
Sparkling wine	2.5260	3.2332	3.8799	4.6558	5.1214	5.63	6.16	6.67
Natural wine and wine-based drinks	0.8960	1.1710	1.4052	1.5809	1.7153	1.84	1.98	2.14
Fortified wine	2.0075	2.3287	2.6314	2.8788	3.1667	3.40	3.72	4.03
Cider	1.4355	1.5374	1.6824	1.8338	1.9805	2.12	2.33	2.52

SPIRITS (R/LAA)	DATE ADJUSTED							
	26.2.03	18.2.04	23.2.05	15.2.06	21.2.07	20.2.08	11.2.09	17.2.10
Brandy	39.4197	44.8752	49.4588	55.21	61.01	67.72	77.67	84.57
Wine spirit	40.3810	45.8365	50.4201	55.21	61.01	67.72	77.67	84.57
Cane spirit	40.3810	45.8365	50.4201	55.21	61.01	67.72	77.67	84.57
Grain spirit	40.3810	45.8365	50.4201	55.21	61.01	67.72	77.67	84.57
Liqueur	40.3810	45.8365	50.4201	55.21	61.01	67.72	77.67	84.57

BEER	DATE ADJUSTED							
	26.2.03	18.2.04	23.2.05	15.2.06	21.2.07	20.2.08	11.2.09	17.2.10
Malt beer (R/LAA)	28.19	30.73	33.65	36.68	39.61	42.38	46.41	50.20
Traditional beer (cent/litre)	7.82	7.82	7.82	7.82	7.82	7.82	7.82	7.82

**11.2 VALUE ADDED TAX (VAT)**

30/9/1992 - 6/4/1993	10%
7/4/1993 - 2010	14%

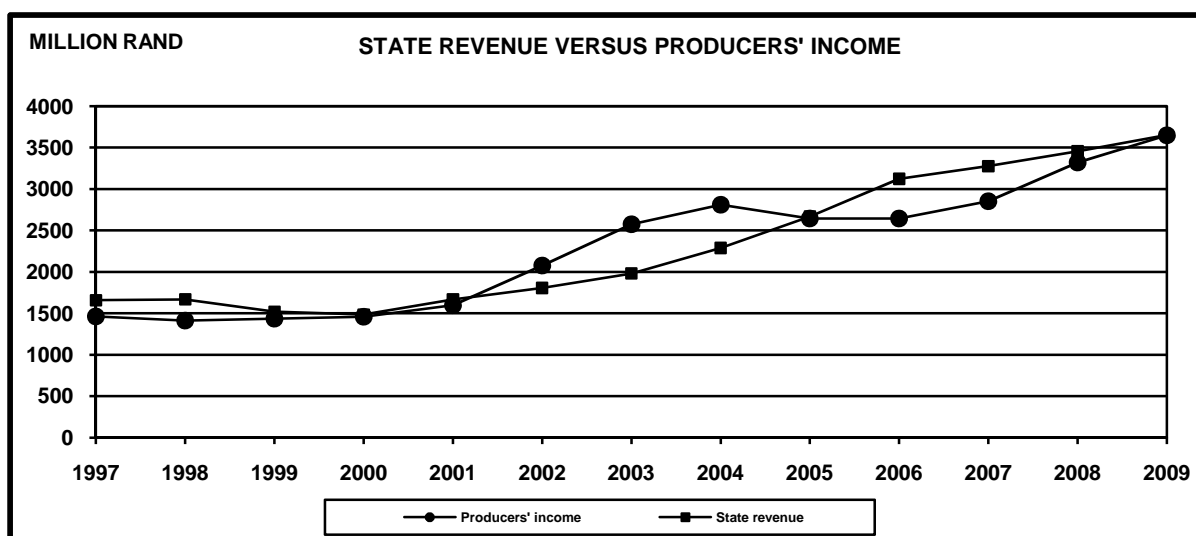
11.3 ESTIMATED STATE REVENUE FROM WINE PRODUCTS (Local sales)

YEAR	EXCISE DUTY			VAT			TOTAL INCOME	% CHANGE
	WINE	BRANDY & WINE SPIRIT	SUB-TOTAL	WINE	BRANDY & WINE SPIRIT	SUB-TOTAL		
	1997	243.9	545.4	789.3	588.1	281.2		
1998	269.0	517.2	786.2	621.6	260.3	881.9	1 668.1	0.6
1999	287.1	521.9	809.0	464.8	245.4	710.2	1 519.2	- 8.9
2000	296.3	495.3	791.6	458.6	234.0	692.6	1 484.2	- 2.3
2001	326.6	570.1	896.7	509.6	260.8	770.4	1 667.1	12.3
2002	343.4	634.6	978.0	543.6	285.0	828.6	1 806.6	8.4
2003	345.8	720.5	1 066.3	587.7	327.0	914.7	1 981.0	9.7
2004	449.0	848.8	1 297.8	625.1	366.3	991.4	2 289.2	15.6
2005	529.5	1 000.9	1 530.4	705.0	433.1	1 138.1	2 668.5	16.6
2006	657.4	1 247.0	1 904.4	759.2	458.6	1 217.8	3 122.2	17.0
2007	691.9	1 232.4	1 924.3	857.0	494.6	1 351.6	3 275.9	4.9
2008	744.1	1 320.5	2 064.7	864.0	525.6	1 389.6	3 454.3	5.4
2009	764.2	1 416.2	2 180.3	924.1	545.7	1 469.8	3 650.1	5.7

Figures based on various industry sources

11.4 STATE REVENUE FROM WINE PRODUCTS VERSUS PRODUCERS' INCOME

YEAR	PRODUCERS' INCOME	INDEX	STATE REVENUE	INDEX
1997	1 462.5	100.3	1 658.6	111.8
1998	1 412.6	96.9	1 668.1	112.4
1999	1 435.9	98.5	1 519.2	102.4
2000	1 458.1	100.0	1 484.2	100.0
2001	1 595.7	109.4	1 667.1	112.3
2002	2 075.5	142.3	1 806.6	121.7
2003	2 576.1	176.7	1 981.0	133.5
2004	2 810.6	192.8	2 289.2	154.2
2005	2 643.8	181.3	2 668.5	179.8
2006	2 642.1	181.2	3 122.2	210.4
2007	2 852.5	195.6	3 275.9	220.7
2008	3 319.9	227.7	3 454.3	232.7
2009	3 648.9	250.3	3 650.1	245.9



12 INTERNATIONAL COMPARISONS

12.1 AREA UNDER VINES AND WINE PRODUCTION - 2006

COUNTRY	AREA UNDER VINES - BEARING (WINE AND TABLE GRAPES)			WINE PRODUCTION (litres)		
	HECTARES	% OF TOTAL WORLD SURFACE AREA	RANK	WINE PRODUCTION	% OF TOTAL WORLD PRODUCTION	RANK
Spain	1 174 000	15.8	1	4 010 000 000	14.1	3
France	842 000	11.3	2	5 340 000 000	18.8	1
Italy	824 600	11.1	3	4 711 700 000	16.6	2
China	483 200	6.5	5	689 600 000	2.4	11
USA	379 200	5.1	6	2 338 000 000	8.2	4
Argentina	219 000	2.9	8	1 539 600 000	5.4	5
Chile	178 000	2.4	10	845 000 000	3.0	9
Australia	158 200	2.1	11	1 429 800 000	5.0	6
South Africa	112 700	1.5	14	1 013 000 000	3.6	7

SOURCE: AUSTRALIAN GLOBAL WINE STATISTICAL COMPENDIUM 1961 TO 2006

12.2 AREA UNDER VINES (WHITE, RED AND SELECTED VARIETIES)

VARIETY	2008			
	% OF TOTAL SURFACE AREA			
	AUSTRALIA *	CHILE *	USA *	SOUTH AFRICA *
Chardonnay	18.5	7.3	20.1	9.0
Sauvignon blanc	3.2	7.4	3.2	8.2
Other white	19.3	9.7	15.3	38.9
<b>Total white varieties</b>	<b>41.0</b>	<b>24.4</b>	<b>38.6</b>	<b>56.1</b>
Cabernet Sauvignon	16.4	34.9	15.9	12.5
Merlot	6.3	11.4	10.0	6.5
Pinotage	-	-	-	6.0
Shiraz	25.8	2.9	4.0	9.8
Other red	10.5	26.4	31.5	9.1
<b>Total red varieties</b>	<b>59.0</b>	<b>75.6</b>	<b>61.4</b>	<b>43.9</b>
<b>Total</b>	<b>100.0</b>	<b>100.0</b>	<b>100.0</b>	<b>100.0</b>

\* Wine grape varieties only, Chile only 2006

12.3 PER CAPITA CONSUMPTION DURING 2006

DISTILLED PRODUCTS			WINE		
COUNTRY	LITRES AA	RANK	COUNTRY	LITRES	RANK
Russia	6.9	1	France	53.9	1
China	3.7	2	Italy	47.2	2
Hungary	3.4	3	Portugal	46.9	3
Japan	3.1	4	Croatia	42.3	4
Chile	2.0	11	Argentina	28.1	12
USA	1.9	12	Australia	22.4	16
Australia	1.6	18	Chile	15.9	24
South Africa	0.9	29	USA	8.5	26
Argentina	0.3	33	South Africa	7.5	30

SOURCE: AUSTRALIAN GLOBAL WINE STATISTICAL COMPENDIUM 1961 TO 2006